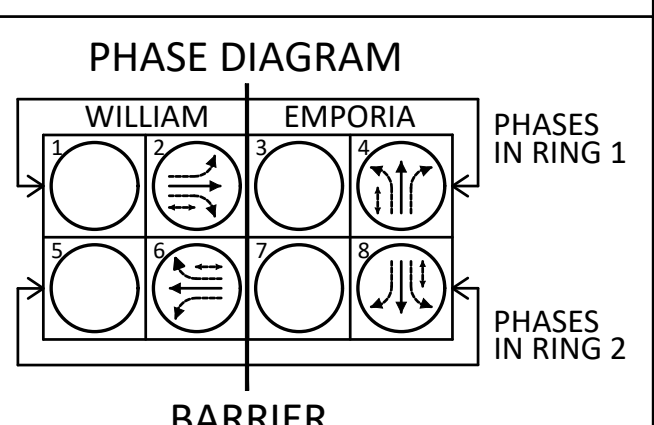
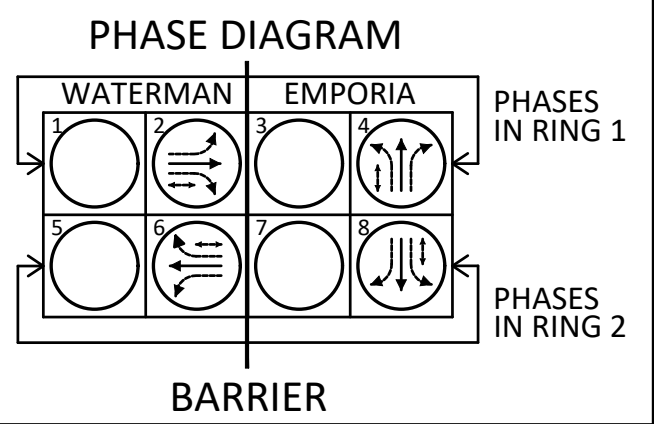
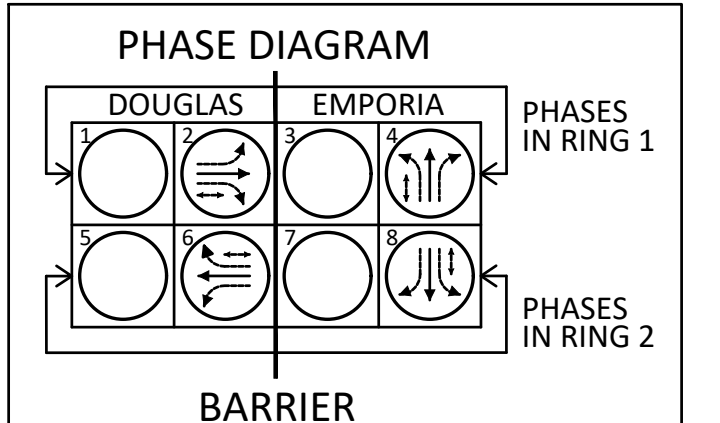
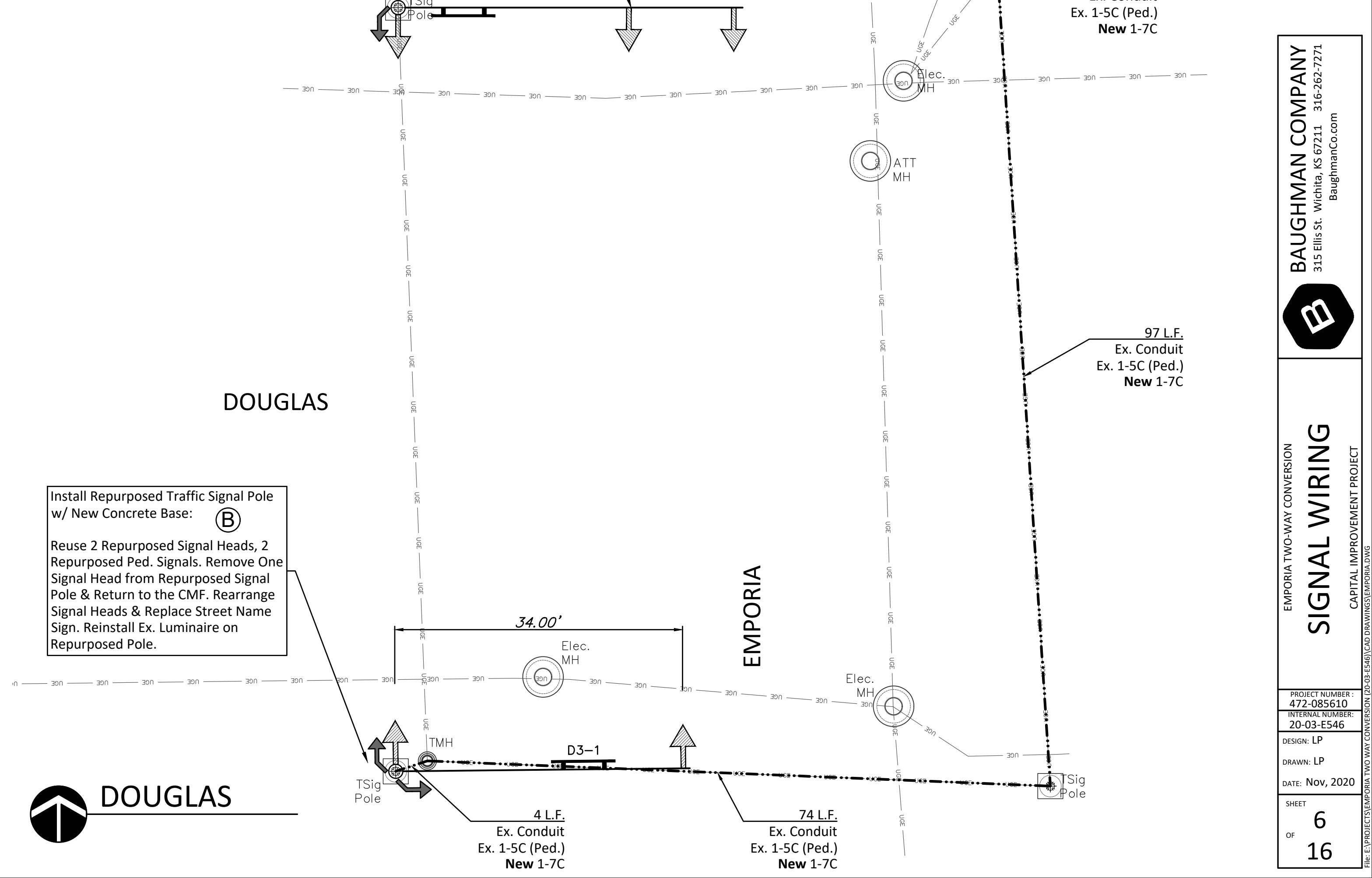
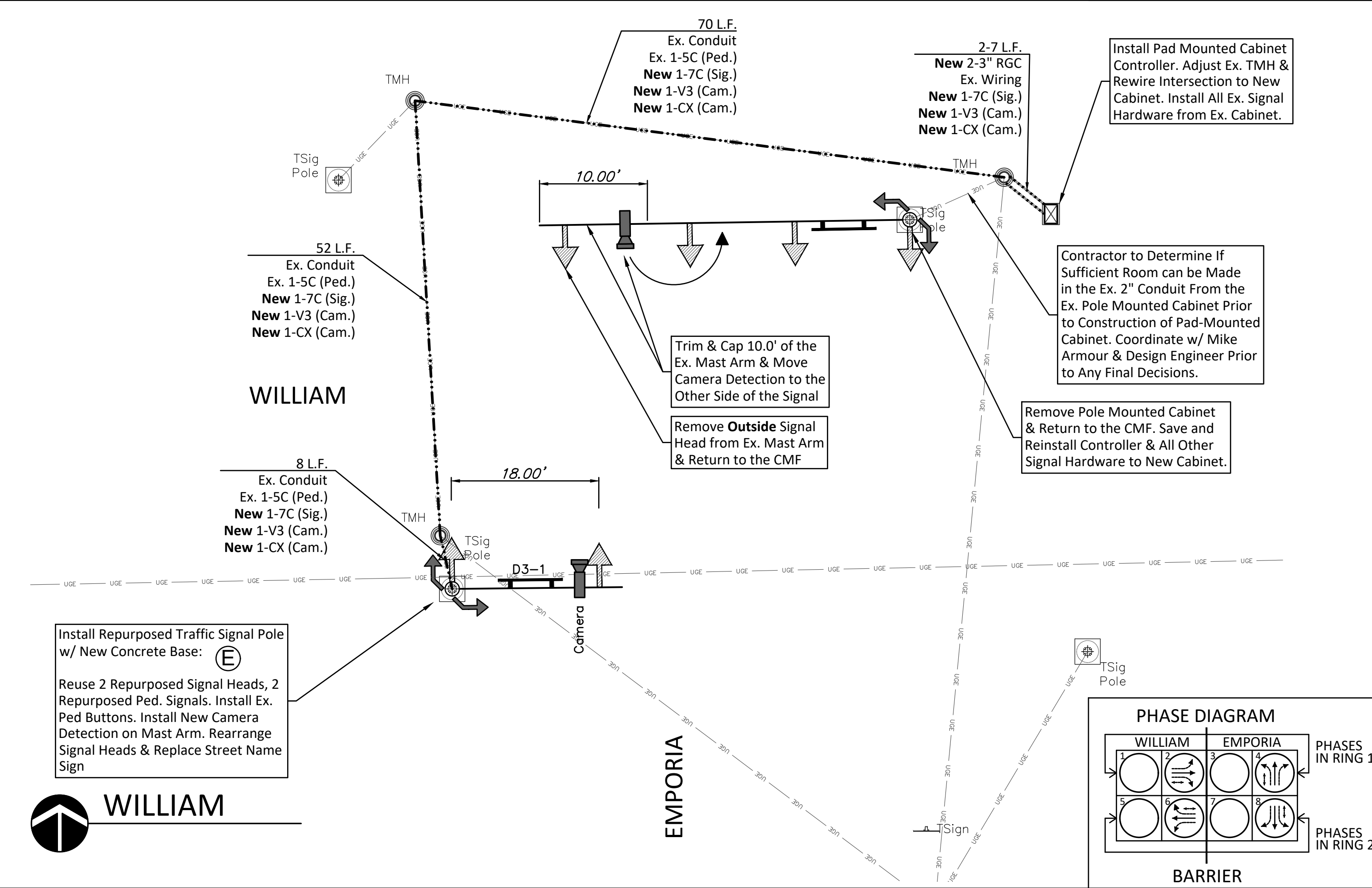
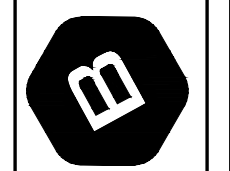


SIGNAL POLE & MAST ARM INVENTORY					
INT.	TAG	MAST ARM	JU/STD	LIGHT	'A' SIG. HEADS
TOPEKA	(A)*	22'	JU	No	2
	(B)	35'	JU	No	3
	(C)	32'	STD	-	2
EMPORIA	(D)*	24'	JU	Yes	2
	(E)	20'	STD	-	2
	(F)	35'	JU	Yes	3
ARENA CROSSING	(G)	35'	STD	-	3

*Signal Pole & Mast Arms which are not Reused for this Project. Return to the CMF



BAUGHMAN COMPANY
315 Ellis St. Wichita, KS 67211 316-267-7271
BaughmanCo.com



EMPORIA TWO-WAY CONVERSION
SIGNAL WIRING
CAPITAL IMPROVEMENT PROJECT

PROJECT NUMBER: 472-085610
INTERNAL NUMBER: 20-03-E546
DESIGN: LP
DRAWN: LP
DATE: Nov, 2020
SHEET
OF
6
16