

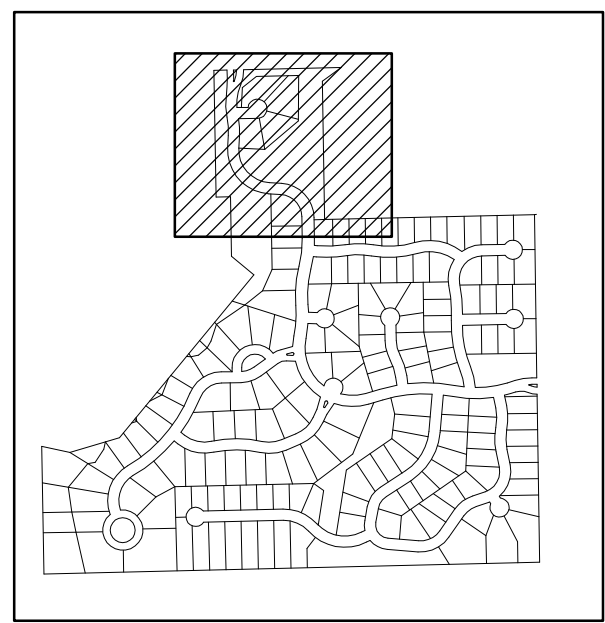
GRADING PLANS
KRUG SOUTH ADDITION
PHASE 1

GRADING PLAN
SHEET TITLE
468-84327
PROJECT NUMBER

DESIGN BY: MLP
DRAWN BY: MLP
CHECKED BY: GJA

ISSUED: May 2007
REVISED:

SHEET NO.
3 of 14



VICINITY MAP



SCALE: 1"=50'
50 25 0 50

LEGEND

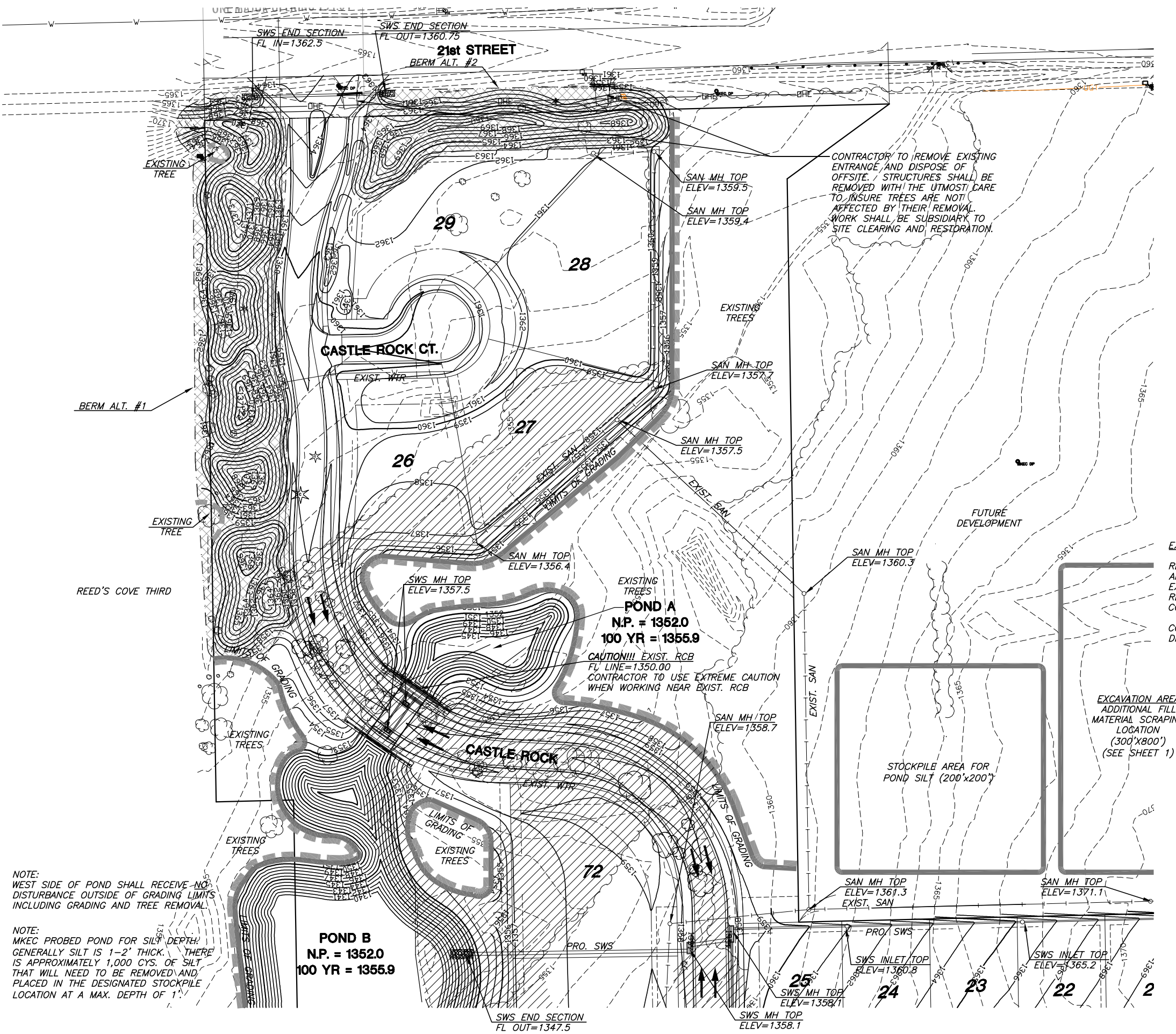
- PROPOSED TREE PROTECTION
- PROPOSED STORM WATER SEWER
- - - EXISTING WATER LINE
- - - EXISTING SANITARY SEWER LINE
- 1359- - EXISTING CONTOURS
- 1360- - PROPOSED CONTOURS
- LIMITS OF GRADING
- NORMAL POOL
- DRAINAGE ARROWS
- ▨ TREE REMOVAL
- ▩ BERM ALTERNATES

EXCAVATION AREA NOTES:
REMOVE TOPSOIL FROM EXCAVATION AREA AND STOCKPILE UNTIL EXCAVATION IS COMPLETE THEN REPLACE OVER DISTURBED AREA. COST SUBSIDIARY TO EARTHWORK.
CONTRACTOR TO INSURE POSITIVE DRAINAGE OUT OF EXCAVATION AREA.

EXCAVATION AREA
ADDITIONAL FILL
MATERIAL SCRAPING
LOCATION
(300'x800')
(SEE SHEET 1)

CONTRACTOR TO REMOVE EXISTING ENTRANCE AND DISPOSE OF OFFSITE. STRUCTURES SHALL BE REMOVED WITH THE UTMOST CARE TO INSURE TREES ARE NOT AFFECTED BY THEIR REMOVAL. WORK SHALL BE SUBSIDIARY TO SITE CLEARING AND RESTORATION.

CAUTION!!! EXIST. RCB
FL LINE=1350.00
CONTRACTOR TO USE EXTREME CAUTION WHEN WORKING NEAR EXIST. RCB



NOTE:
WEST SIDE OF POND SHALL RECEIVE NO DISTURBANCE OUTSIDE OF GRADING LIMITS INCLUDING GRADING AND TREE REMOVAL.

NOTE:
MKEC PROBED POND FOR SILT DEPTH. GENERALLY SILT IS 1-2' THICK. THERE IS APPROXIMATELY 1,000 CYS. OF SILT THAT WILL NEED TO BE REMOVED AND PLACED IN THE DESIGNATED STOCKPILE LOCATION AT A MAX. DEPTH OF 1'

PLOTTER: Tuesday, May 15, 2007 10:57:53AM

J:\CIVIL\05291\DWG\GRAD\PH 1\BND\05291_G1.DWG