

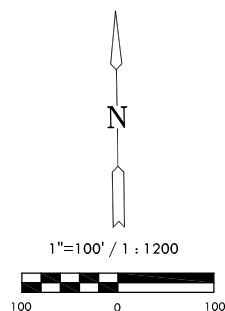
# FINAL PLAT

## KRUG SOUTH ADDITION

### AN ADDITION TO WICHITA, SEDGWICK COUNTY, KANSAS

NW. Cor., NE 1/4, Sec. 11,  
T27S, R2E, 6th P.M.  
Fnd. 1/2" Pipe

NE. Cor., NE 1/4, Sec. 11,  
T27S, R2E, 6th P.M.  
Fnd. 1/2" w/ cap



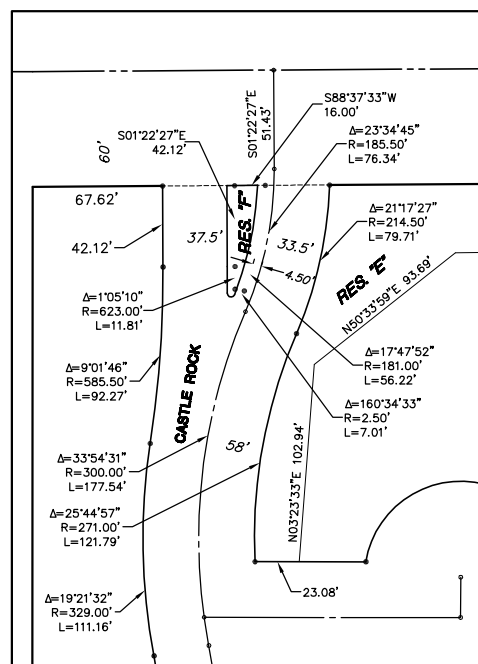
Basis of Bearings: Kansas Coordinate System 1983 South Zone bearing of  
N88°37'33"E along the N. Line of NE. 1/4, Sec. 11 T27S, R2E, 6th P.M.

#### LEGEND

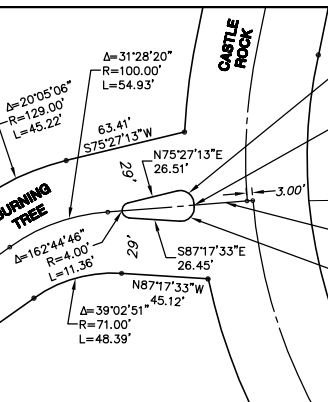
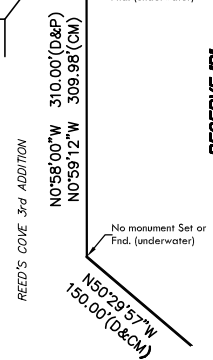
Date of Survey: September, 2007

- △ = Section Corner Monument Found
- ⊙ = Found 3/8" Rebar w/ MKEC  
CLS 39 Id. cap
- = Set 3/8" Rebar w/ MKEC  
CLS 39 Id. cap
- = Found 1/2" Rebar w/ Baughman Id. cap
- (M) = Measured
- (CM) = Calculated from measured
- (P) = Platted
- (D) = Deeded or Described

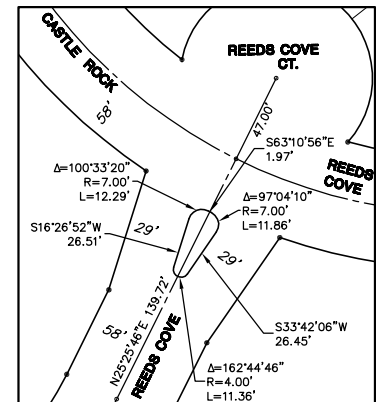
MINIMUM PAD ELEVATIONS LOWEST OPENINGS		
LOTS (inclusive)	BLOCK	ELEVATION NGVD
26	1	1359.7
27	1	1360.0
28 and 29	1	1360.7
71	2	1359.3
72	2	1359.5



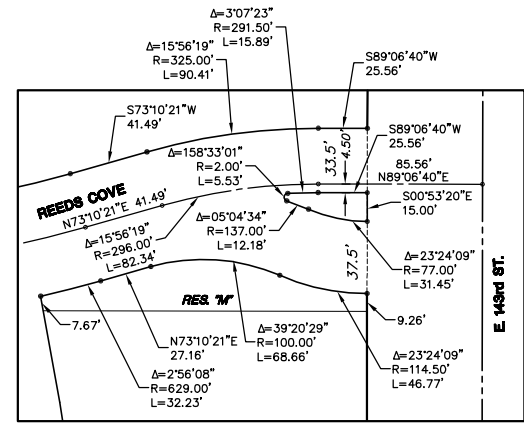
**DETAIL RESERVE "F"**  
1"=50'



**DETAIL RESERVE "G"**  
1"=50'



**DETAIL RESERVE "K"**  
1"=50'



**DETAIL RESERVES "L" & "M"**  
1"=50'

#### BENCH MARKS

- Datum BM: "T" at NE corner of inlet on S. side of  
Williamsgate over bridge in  
Hawthorne Addition.  
Elev. = 1355.74 (NGVD 29)
- BM#1: RR spike in S. face of PP, 3rd PP W. of  
143rd St. (79' from CL) S. side of 21st  
St. (49' from CL)  
Elev. = 1362.17 (NGVD 29)
- BM#2: FH NE bolt w/ tag on top of flange,  
W. side of 143rd St. NW of drive. (23'  
from CL)  
Elev. = 1382.81 (NGVD 29)

