

GENERAL NOTES

Contractor will be required to provide a minimum advance notice of twenty-four (24) hours to utility companies prior to starting any excavation as follows:

Kansas One—Call 687-2470

The Contractor must notify the following in case of an emergency:

Cox Communications 262-0661
 Westar 383-8600
 SBC 1-800-286-8313
 KCS 832-3121

Underground utility service lines and overhead utility pole lines are to be adjusted as necessary by others prior to construction unless the plans specifically call for their adjustment by the Contractor or unless the plans specifically identify a utility to be adjusted by its owner during construction. Existing utilities and their location, as shown on the plans, represent the best information obtainable for design. Location information has been obtained from the various utility companies and is either from company record drawings or company-provided field locations. The Contractor will be required to work around existing utilities within the right-of-way which do not conflict with proposed construction.

A saw cut of at least one-half the depth of existing surface courses or one-fourth the depth of existing total pavement thickness shall be provided at locations where partial construction abuts an existing surface course or pavement for which partial removal of that surface or pavement is required, except when such saw cuts are within three (3) feet of an existing joint the limits of removal shall be extended to the existing joint. Such saw cuts will not be paid for directly and this cost shall be considered as subsidiary to the removal of the surface or pavement.

Rubble from the removal of miscellaneous structures and excess excavation which is to be wasted shall be disposed of on sites to be provided by the Contractor. These sites shall be approved by the Engineer as to suitability, appearance and site location. Locations that, in the opinion of the Engineer, will leave an unsightly appearance will not be approved.

All disposal sites must be approved by the Kansas Department of Health and Environment. Material either stockpiled or disposed of in a flood plain would require a Kansas State Board of Agriculture permit. Any material dumped in waters of the United States or wetlands is subject to U.S. Corps of Engineers construction limits would require additional archeological investigations unless buried in a previously approved borrow location.

The Engineer shall take field ties to all quarter section corners. The Contractor shall set a City survey monument in the required location where such quarter section corners fall within the limits of pavement construction. Survey monuments will be furnished by the City. The Engineer will accurately locate and install the iron at the quarter section corner. This work will not be paid for directly, but shall be considered subsidiary to the other pay items of work in the contract.

The Contractor shall notify pipeline companies at least 24 hours in advance of any work being performed across and/or adjacent to pipelines.

The Contractor shall give all property owners and/or tenants of developed property directly abutting the construction of this project a minimum of ten (10) days advance notice prior to start of construction.

The Contractor shall seed, fertilize and mulch all disturbed areas upon completion of construction. Incidental to the bid item for Site Clearing and Restoration.

There is groundwater on this project, therefore, dewatering is anticipated. The Contractor shall install silt fence in ditches if silt transport is noted during construction. Silt fence will be incidental to the bid items for clearing and restoration. The Contractor will need a Water Rights Appropriation from the Division of Water Resources to allow dewatering.

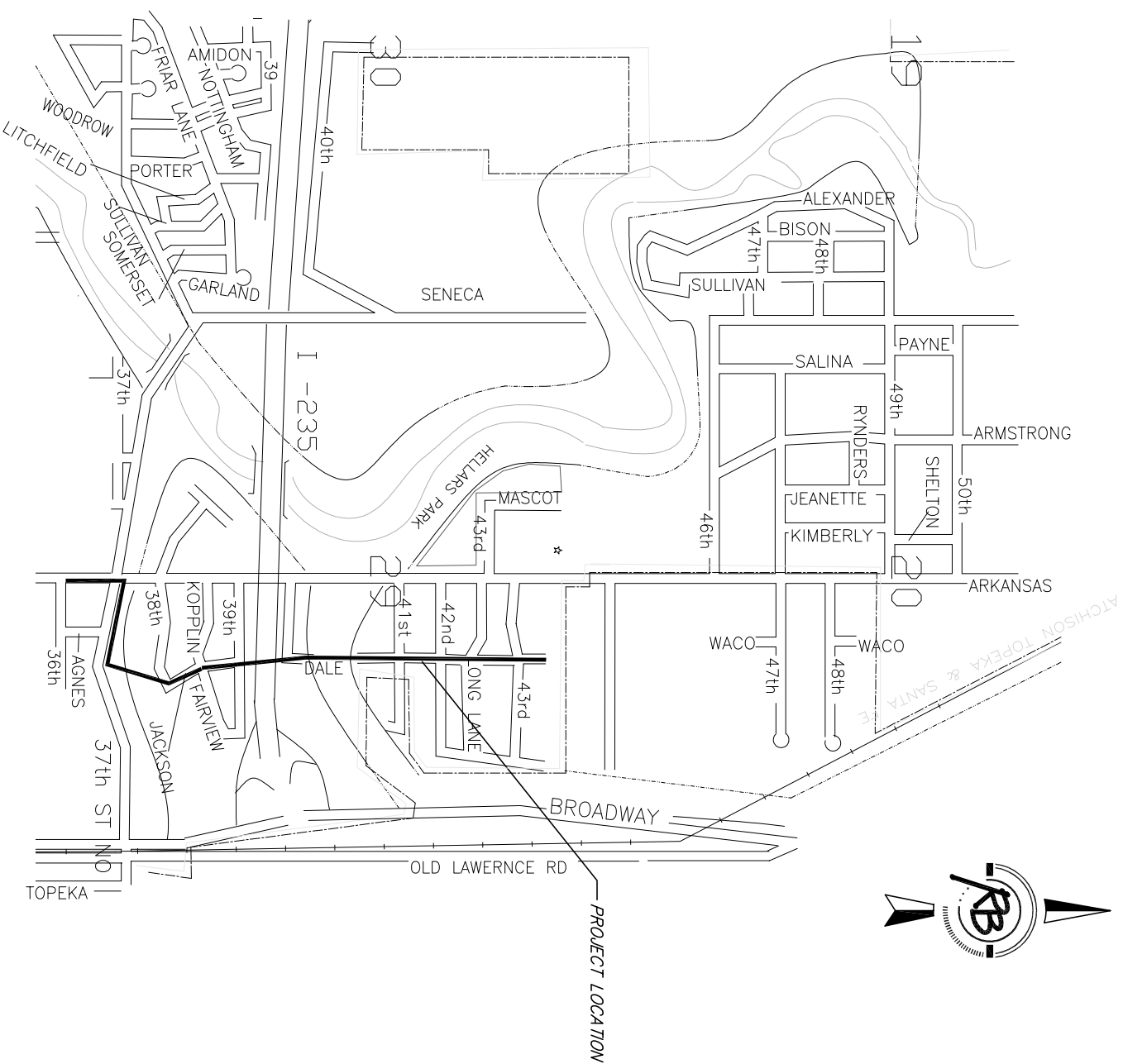
The Contractor shall contact Mr. Doug Arvidson with the Department of Public Works forty-eight (48) hours prior to starting any excavation.

Manholes within the limits of the project shall be removed and replaced by the Contractor as approved by the Engineer. Contractor will be required to make satisfactory provisions for mail delivery to properties affected by this project during its construction.

Manholes shall be lined with a City of Wichita approved liner. That section of the manhole that is in the groundwater shall be "wrapped" in accordance with City of Wichita Specs.

SANITARY SEWER MAIN CONSTRUCTION MAIN 16, SS #23 WATER AND SEWER DEPARTMENT

PROJECT NO. 468-83958
 OCA # 622095

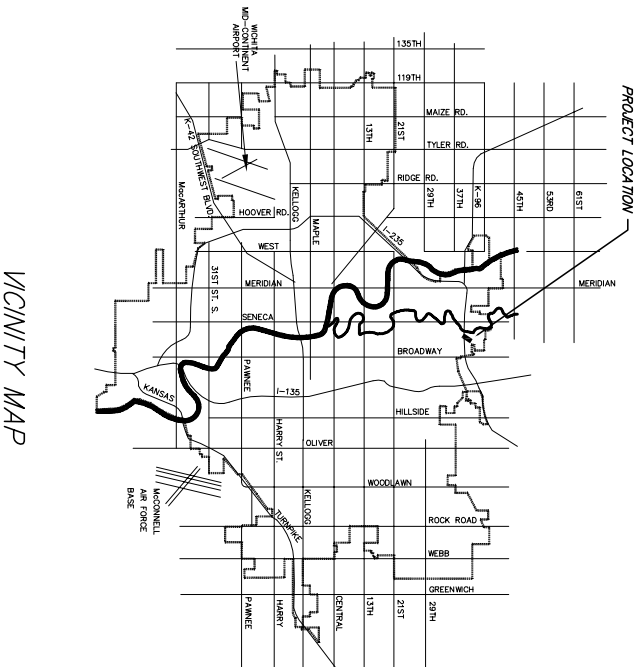


INDEX OF SHEETS

1. TITLE SHEET
- 2-4. NORTH SANITARY SEWER MAIN - LINE 1
- 5-6. SOUTH SANITARY SEWER MAIN - LINE 2
- 7-10. SOUTH SANITARY SEWER MAIN - LINE 3
11. STANDARD TYPE "P" MANHOLE DETAILS
12. MANHOLE TIE "P" MANHOLE DETAILS
- 13-16. LIFT STATION
- 17-18. EROSION CONTROL PLAN
- 19-23. BMP'S
24. BUBBLE MAP

BENCHMARKS

- Arkansas and North of 37th St. North
 Brass cap, east side of Arkansas on south side of flood control dike. NGVD 29 1323.15 ft
 100.00 ft North of 37th St. North
- Arkansas and Dale
 Brass cap, east side of Arkansas on north end of flood control structure. NGVD 29 1322.91 ft
 300.00 ft North of Dale Street.
- Arkansas and 46th St. North
 CONW Bench Mark. SW corner of intersection.
 31.70 ft South of center line of 46th.
 36.50 ft West of centerline of Arkansas.
 40.30 ft North of center of FP.
 89.50 ft SW of H.L.P.



CITY OF WICHITA, KANSAS
 JAMES L. ARMOUR P.E., CITY ENGINEER

Ruggles & Bohm, P.A.
 Engineering, Surveying, Land Planning
 924 North Main
 Wichita, Kansas 67203
 www.rkb.com
 (316) 264-8008
 (316) 264-4621 fax
 E-mail: info@rkb.com