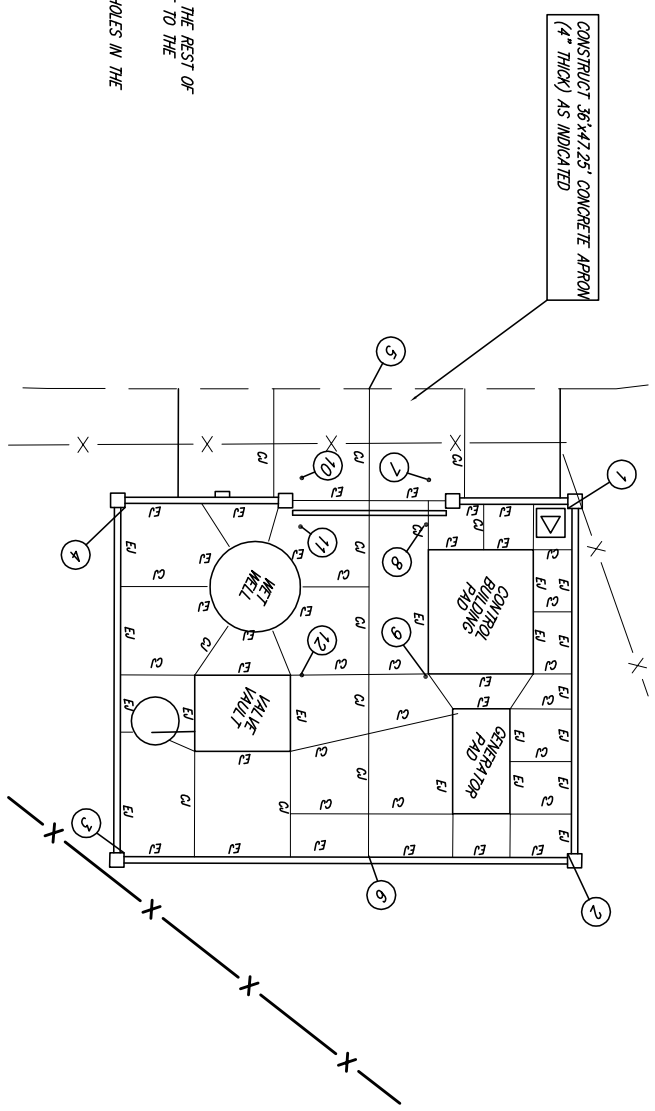


Scale 1" = 10' (Horiz.)

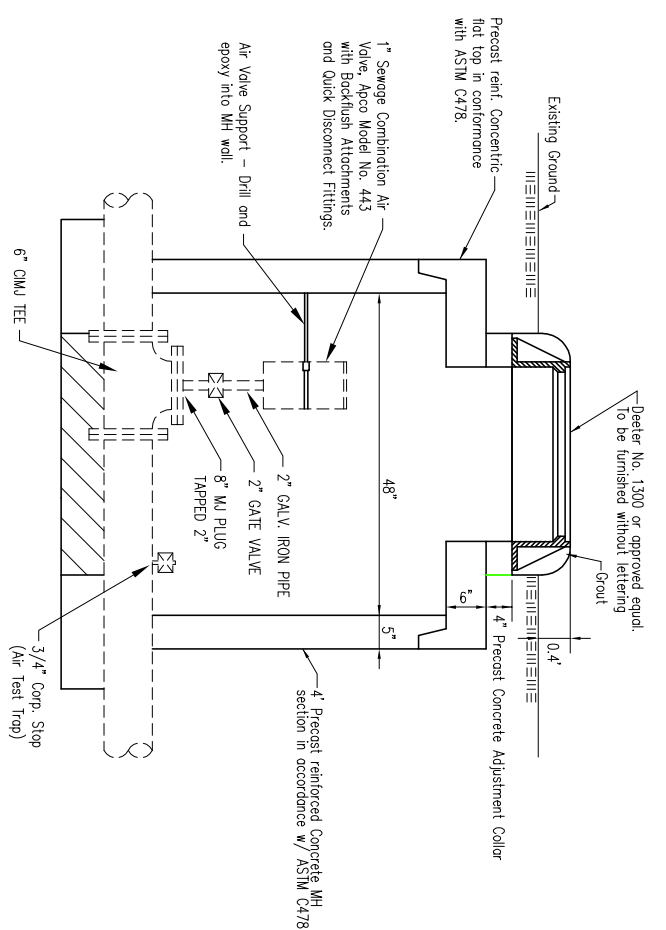
NOTES
 THE BUILDING PADS SHALL BE AT 1322.00. THE REST OF THE PAD SHALL PROVIDE POSITIVE DRAINAGE TO THE ENTRANCE OR TO WEEP HOLES.
 THE CONTRACTOR SHALL CONSTRUCT WEEP HOLES IN THE CONCRETE WALL TO ALLOW FOR DRAINAGE.



SEWER SERVICE TABLE

NUMBER	DESCRIPTION	COORDINATES	ELEVATION
1	NW COR. CONG. FENCE	N 17736.62 E 20686.48	1321.75
2	SW COR. CONG. FENCE	N 17690.21 E 20686.42	1321.75
3	SE COR. CONG. FENCE	N 17690.15 E 20722.60	1321.75
4	NE COR. CONG. FENCE	N 17736.59 E 20722.65	1321.75
5	CL CONG. DRIVE	N 17715.80 E 20673.99	1321.33
6	CL CONG. DRIVE	N 17715.75 E 20723.05	1321.60
7	BOLLARD	N 17722.05 E 20683.51	1321.80
8	BOLLARD	N 17721.77 E 20688.42	1321.80
9	BOLLARD	N 17721.72 E 20704.12	1321.80
10	BOLLARD	N 17708.74 E 20683.31	1321.80
11	BOLLARD	N 17708.60 E 20688.42	1321.80
12	BOLLARD	N 17708.76 E 20703.96	1321.80

SEWER FORCE MAIN AIR RELEASE ASSEMBLY DETAIL



Contractor shall include 2 wings of mastic or rubber gaskets (natural or synthetic) at each joint in the manhole. Provide exterior bituminous coating. (One coat Vapor-Right-Build Bituminous coating 35-J-10, or Inmetec 40-450 Heavy Inmetec or approved equal).

MAIN 16, SS #23
 LIFT STATION DETAILS
 CITY OF WICHITA, KANSAS

Rugles & Bohm, P.A.
 Engineering, Surveying, Land Planning
 924 North Main
 Wichita, Kansas 67203
 www.rkansas.com
 (316) 264-8008
 (316) 264-4621 fax
 E-mail: info@rkansas.com

DESIGNER: PDC
 DRAWN: PDC
 REVIEW: PDC
 UTILITY

PROJECT NUMBER: KDOT Lift Sta. engg.
 DATE: Apr. 28, 2006

REVISION: 15 OF 24
 SHEET: 24

