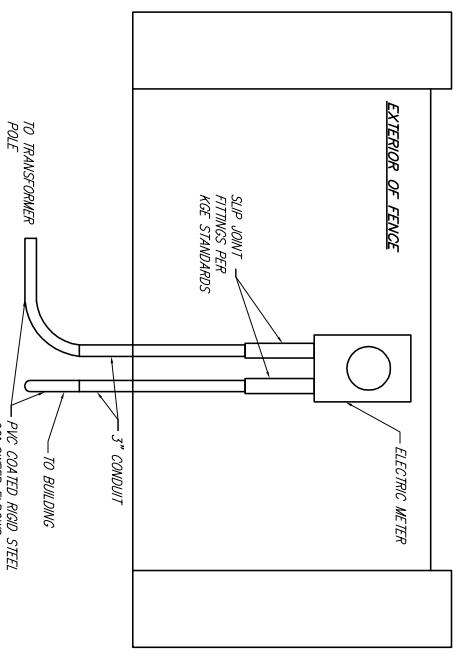


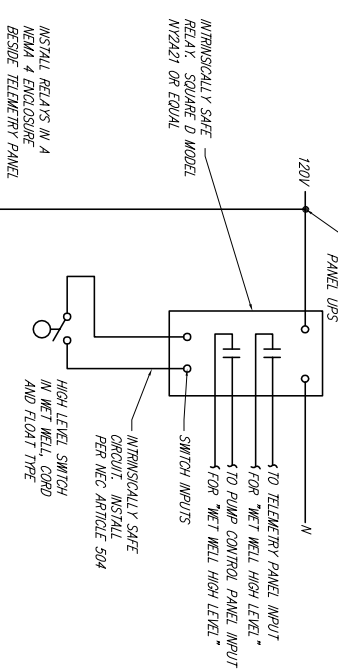
ANTENNA TOWER NOTES:
TOWER SHALL BE A RGHM MODEL #256
OR APPROVED EQUAL. CONTRACTOR TO
VERIFY WITH BASE SECTION, TWO 10\"/>

ALL RIBBED GROUNDING
CONNECTIONS TO BE
EXOTHERMICALLY WELDED.

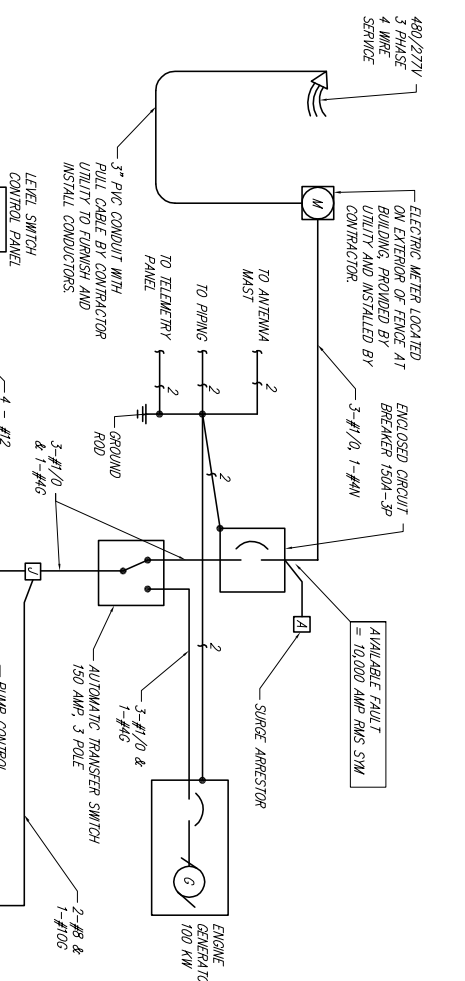
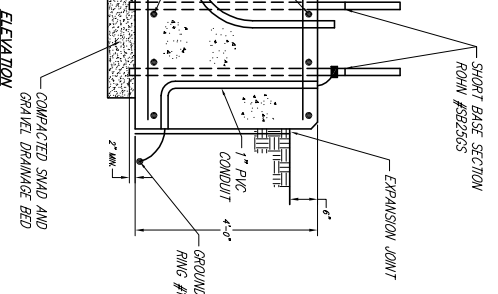
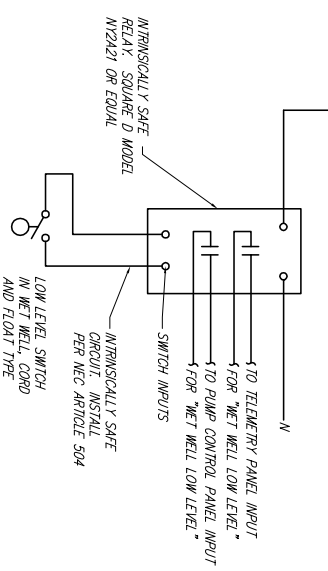
FOUNDATION TELEMETRY TOWER



ELECTRIC METER INSTALLATION



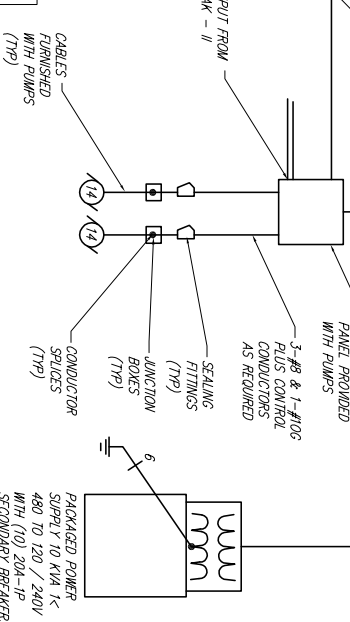
LEVEL SWITCH CONTROL PANEL



ELECTRICAL LEGEND

- CONDUIT AND WIRING, ARROWS INDICATE NUMBER TO PANEL. HATCH MARKS INDICATE NUMBER OF CONDUCTORS IF MORE THAN TWO. NUMBER INDICATES SIZE IF OTHER THAN #12 AWG.
- EQUIPMENT GROUNDING CONDUCTOR IN CONDUIT WITH CIRCUIT(S). NUMBER INDICATES SIZE IF OTHER THAN #12 AWG.
- UG UNDERGROUND CONDUIT AND WIRING
- DUPLICATE RECEPTACLE 20A, NEMA CONFIGURATION 5-20R
- HP INDICATES WEATHERPROOF
- PP POWER POLE
- SA SURGE ARRESTOR

ONE LINE DIAGRAM

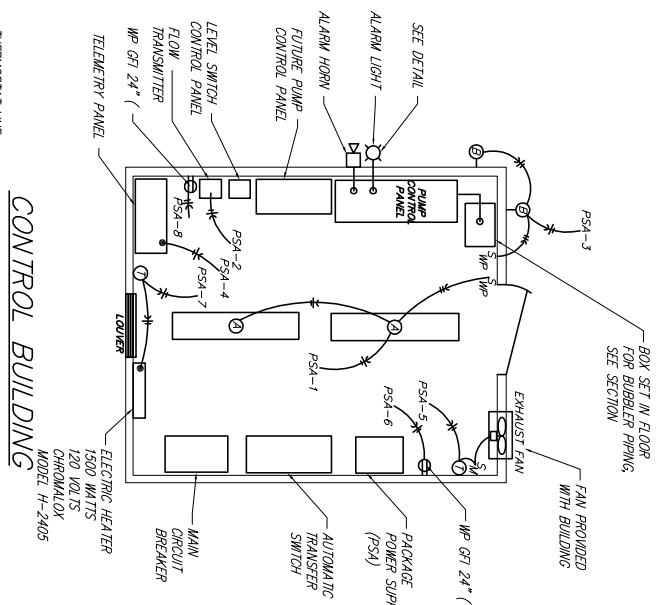


GENERAL NOTES:

1. COMPLETE ALL WORK IN ACCORDANCE WITH THE NATIONAL ELECTRICAL CODE (NEC), NATIONAL ELECTRICAL SAFETY CODE (NFPA), AND LOCAL REGULATIONS.
2. ALL ELECTRICAL EQUIPMENT SHALL BE U.L. LISTED.
3. SEE SPECIFICATIONS FOR ADDITIONAL REQUIREMENTS.
4. THE CONSTRUCTION DRAWINGS ARE DIAGRAMMATIC IN NATURE AND SHOW RELATIVE LOCATIONS OF DEVICES AND EQUIPMENT. COORDINATE WITH THE ACTUAL EQUIPMENT INSTALLED.
5. COORDINATE ELECTRICAL WORK WITH THE WORK OF OTHER TRADES.
6. CONTRACTOR IS RESPONSIBLE TO LOCATED AND PROTECT UTILITY LINES AND PIPING IN THE AREA UNDER CONSTRUCTION.
7. ALL STARTERS AND CONTACTORS SHALL HAVE 120 VOLT THERMOSTATS PROVIDE FUSED CONNECTION FOR UNITS OPERATING AT 120 VOLTS LINE TO NEUTRAL. PROVIDE FUSED CONTROL POWER TRANSFORMERS FOR UNITS OPERATING ABOVE 120 VOLTS.
8. ALL CHARGES FROM AGE TO INSTALL AND/OR MODIFY ELECTRIC SERVICE TO THESE FACILITIES WILL BE PAID BY THE CONTRACTOR.
9. A #2 BSD COPPER GROUND CONDUCTOR SHALL BE INSTALLED TO PIPING IN VALVE VAULT, 30" MIN. DEPTH.

TELEMETRY NOTES:

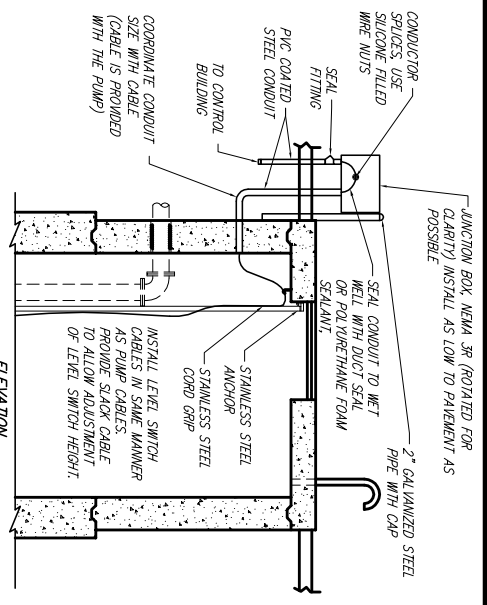
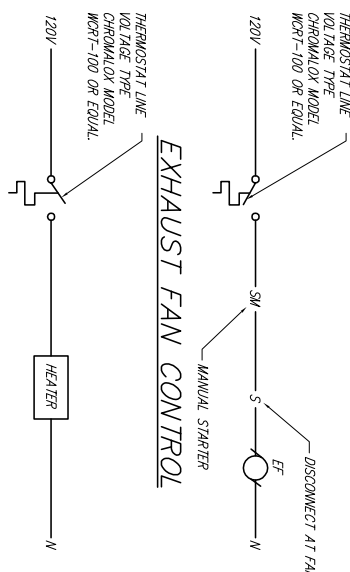
1. ALL TELEMETRY EQUIPMENT SHALL MEET CITY OF WICHITA SPECIFICATIONS.
2. CONTRACTOR TO COORDINATE WITH ROBERT BIGLEY AT 289-4789
3. INSTALL OWNER PROVIDED COAXIAL CABLE BETWEEN TELEMETRY PANEL AND ANTENNA.
4. OWNER WILL PROVIDE HARDWARE AND SOFTWARE MODIFICATIONS TO TELEMETRY PANEL.



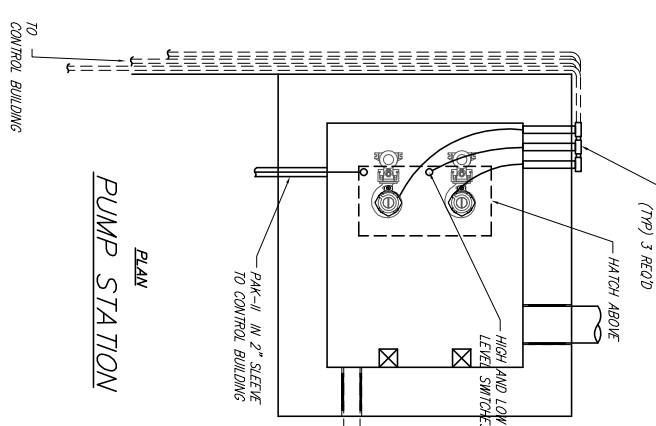
CONTROL BUILDING

EXHAUST FAN CONTROL

ELECTRIC HEATER CONTROL

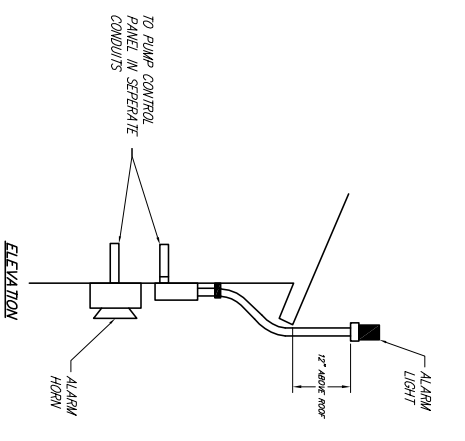


PUMP STATION



PUMP STATION

ALARM LIGHT AND HORN DETAIL



ELECTRICAL SECTIONS AND DETAILS WICHITA, SEDGWICK COUNTY, KANSAS

Ruggles & Bohm, P.A.
Engineering, Surveying, Land Planning
924 North Main
Wichita, Kansas 67203
www.wkruggles.com
E-mail: info@rkbnsas.com

PROJECT NUMBER 468-83958
DATE Mar. 28, 2007

DESIGN	PDC
DRAWN	PDC
REVIEW	
CHECKED	
DATE	Mar. 28, 2007