

# GENERAL NOTES

- THE CONTRACTOR SHALL COMPLY WITH ALL APPLICABLE SAFETY REGULATIONS. ALL CONSTRUCTION SHALL BE COMPLETED FOLLOWING CURRENT CITY STANDARD SPECIFICATIONS AND SPECIAL PROVISIONS.
- CONTRACTOR WILL BE REQUIRED TO PROVIDE NOTICE TO UTILITY COMPANIES A MINIMUM OF SEVENTY-TWO (72) HOURS PRIOR TO ANY EXCAVATION, AS FOLLOWS:
 

KANSAS ONE-CALL	687-2470
-----------------	----------

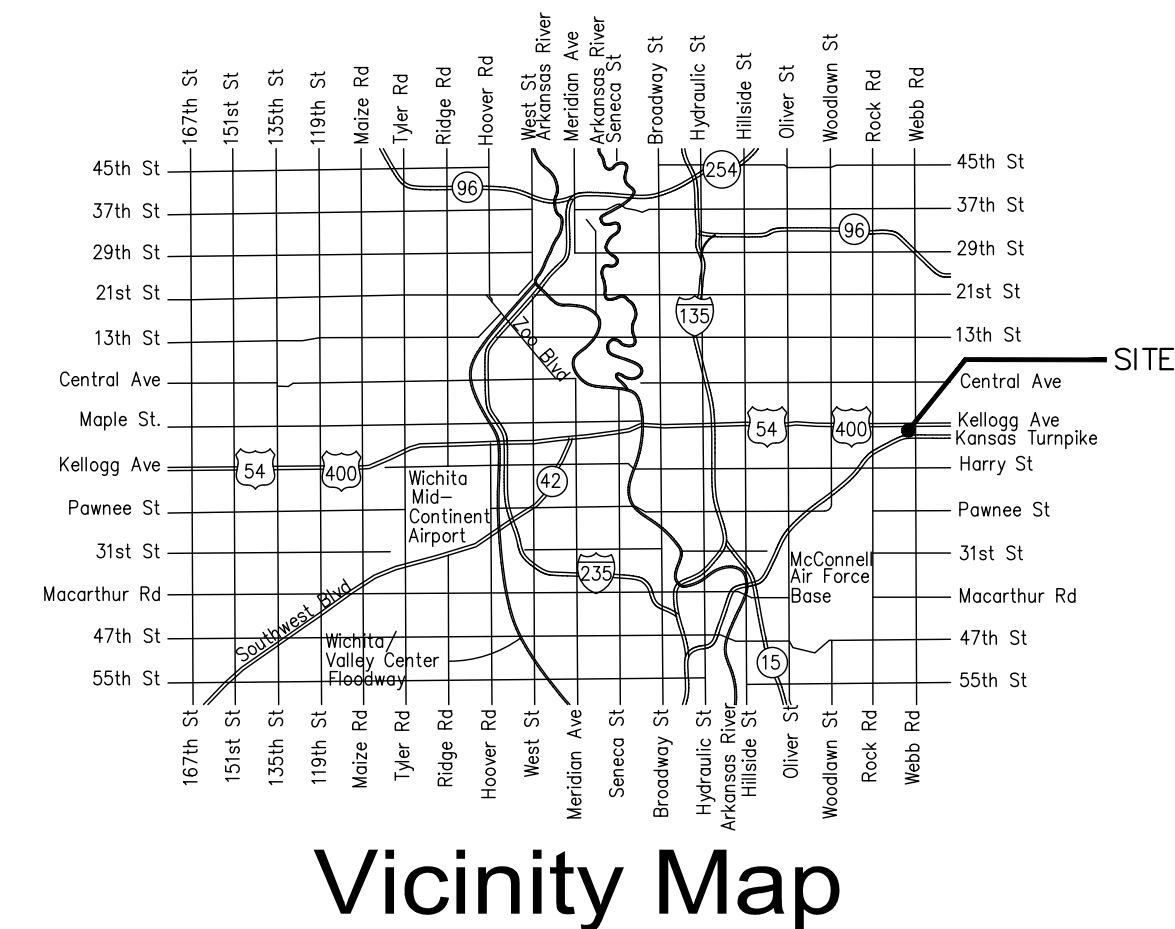
THE CONTRACTOR MUST NOTIFY THE FOLLOWING IN CASE OF AN EMERGENCY:

AT&T	1-800-246-8464
BLACK HILLS ENERGY	1-800-694-8969
CITY OF WICHITA WATER & SEWER	1-316-219-8921
CITY OF WICHITA STORMWATER	1-316-268-4090
CITY OF WICHITA TRAFFIC	1-316-268-4034
COX COMMUNICATIONS	1-888-249-3530
KANSAS GAS SERVICE	1-888-482-4950
EVERGY	1-800-544-4857
- UTILITY SERVICE LINES, POLES, ETC. ARE TO BE ADJUSTED AS NECESSARY BY OTHERS PRIOR TO CONSTRUCTION UNLESS THE PLANS SPECIFICALLY CALL FOR THEIR ADJUSTMENT BY THE CONTRACTOR OR UNLESS THE PLANS SPECIFICALLY IDENTIFY A UTILITY TO BE ADJUSTED BY ITS OWNER DURING CONSTRUCTION. EXISTING UTILITIES AND THEIR LOCATION, AS SHOWN ON THE PLANS, REPRESENT THE BEST INFORMATION OBTAINABLE FOR DESIGN. THE CONTRACTOR WILL BE REQUIRED TO WORK AROUND EXISTING UTILITIES WITHIN THE RIGHT-OF-WAY WHICH DO NOT CONFLICT WITH PROPOSED CONSTRUCTION.
- RUBBLE FROM THE REMOVAL OF MISCELLANEOUS STRUCTURES AND EXCESS EXCAVATION WHICH IS TO BE WASTED SHALL BE DISPOSED OF ON SITES TO BE PROVIDED BY THE CONTRACTOR. THESE SITES SHALL BE APPROVED BY THE ENGINEER AS TO SUITABILITY, APPEARANCE, AND SITE LOCATION. LOCATIONS, IN THE OPINION OF THE ENGINEER, THAT WILL LEAVE AN UNSIGHTLY APPEARANCE WILL NOT BE APPROVED. ALL DISPOSAL SITES MUST BE APPROVED BY THE KANSAS DEPARTMENT OF HEALTH AND ENVIRONMENT. MATERIAL EITHER STOCKPILED OR DISPOSED OF IN A FLOOD PLAIN WILL REQUIRE A KANSAS STATE BOARD OF AGRICULTURE PERMIT. ANY MATERIAL DUMPED IN WATERS OF THE UNITED STATES OR WETLANDS IS SUBJECT TO U.S. CORPS. OF ENGINEERS PERMITTING REGULATIONS. ANY MATERIAL BURIED OR STOCKPILED BEYOND APPROVED CONSTRUCTION LIMITS WILL REQUIRE ADDITIONAL ARCHAEOLOGICAL INVESTIGATIONS UNLESS BURIED IN A PREVIOUSLY APPROVED BORROW LOCATION.
- TREES AND SHRUBS IN PUBLIC RIGHT-OF-WAY WHICH ARE IN DIRECT CONFLICT WITH PROPOSED NEW CONSTRUCTION SHALL BE REMOVED BY THE CONTRACTOR WITH THE CITY ENGINEER'S APPROVAL. TREES AND SHRUBS WHICH ARE NOT IN DIRECT CONFLICT WITH PROPOSED NEW CONSTRUCTION SHALL BE SAVED AND PROTECTED FROM DAMAGE.
- THE CONTRACTOR SHALL GIVE ALL PROPERTY OWNERS AND/OR TENANTS OF DEVELOPED PROPERTY ABUTTING THE CONSTRUCTION OF THIS PROJECT A MINIMUM OF TEN (10) DAYS NOTICE PRIOR TO START OF CONSTRUCTION.
- THE CONTRACTOR SHALL BE RESPONSIBLE FOR PRESERVING PROPERTY IRONS. THE CONTRACTOR WILL BE REQUIRED TO RE-ESTABLISH ANY PROPERTY IRONS WHICH ARE DAMAGED OR DESTROYED BY HIS CONSTRUCTION OPERATIONS. SUCH IRONS SHALL BE RE-ESTABLISHED BY A LICENSED LAND SURVEYOR IN ACCORDANCE WITH STATE LAWS.
- THE ENGINEERING DIVISION SHALL FIELD LOCATE WATER VALVES ONE TIME DURING CONSTRUCTION WHEN REQUESTED BY THE CONTRACTOR. IT SHALL BE THE CONTRACTOR'S RESPONSIBILITY TO PRESERVE SUCH FIELD LOCATIONS DURING THE CONSTRUCTION PROCESS. WATER VALVES, VALVE BOXES OR FIRE HYDRANTS DAMAGED DURING CONSTRUCTION SHALL BE REPAIRED BY CONTRACTOR AT HIS OWN EXPENSE. VALVE BOXES AND WATER METERS WITHIN THE PROJECT LIMITS SHALL BE ADJUSTED TO MATCH FINAL GRADES BY THE CONTRACTOR.
- THE CONTRACTOR SHALL NOTIFY THE INSPECTING ENGINEER AND TOM MASON AT 316-268-4574 WITH THE CITY OF WICHITA WITH THE ANTICIPATED CONSTRUCTION START DATE AND NOTIFY THEM OF PROJECT COMPLETION. STAKING AND INSPECTION FOR THIS PROJECT WILL BE THE RESPONSIBILITY OF THE CONTRACTOR.
- IF TRAFFIC WILL BE IMPACTED BY CONSTRUCTION, A TRAFFIC CONTROL PLAN MUST BE SUBMITTED AND APPROVED BY THE CITY TRAFFIC ENGINEER, MIKE ARMOUR AT [TRAFFIC@WICHITA.GOV](mailto:TRAFFIC@WICHITA.GOV) BEFORE CONSTRUCTION CAN BEGIN. THE CONTRACTOR SHALL BE RESPONSIBLE FOR ALL TRAFFIC CONTROL MEASURES TO FACILITATE CONSTRUCTION. ALL CONSTRUCTION ZONE MARKINGS AND SIGNAGE SHALL CONFORM TO THE LATEST VERSION OF THE MANUAL ON UNIFORM TRAFFIC CONTROL DEVICES (MUTCD) AS PUBLISHED BY THE US DEPT. OF TRANSPORTATION, FEDERAL HIGHWAY ADMINISTRATION. ALL COSTS ASSOCIATED WITH CONSTRUCTION MARKINGS AND SIGNAGE SHALL BE THE CONTRACTORS RESPONSIBILITY.
- ALL ELEVATIONS SHOWN ARE NAVD 88.
- ALL AREAS DISTURBED DURING CONSTRUCTION THAT WILL NOT BE UNDER PROPOSED PAVEMENT SHALL BE RESTORED TO MATCH EXISTING CONDITIONS.
- ANY SIDEWALK, DRIVE APPROACH, CURB, OR STREET PAVEMENT REMOVED TO CONSTRUCT PROJECT MUST HAVE A PAVEMENT CUT PERMIT AND BE REPLACED BY THE CITY CONTRACTOR. PERMITS CAN BE OBTAINED BY CALLING 316-268-4501 OR 316-268-4480.
- ALL APPLICABLE FEES (TAP, EQUITY, IN LIEU OF & MAIN BENEFIT) MUST BE PAID BEFORE ANY CONNECTIONS CAN BE MADE ON THIS PROJECT. QUOTES CAN BE OBTAINED ON FEES BY CALLING 316-268-4555.
- CITY MAINTENANCE OF SANITARY SEWER MAINS ENDS AT LAST STRUCTURE WITHIN THE EASEMENT OR RIGHT-OF-WAY. SANITARY SEWER LINE NO. 1 IN ITS ENTIRETY IS A PRIVATE LINE.
- ALL STUBS AND CAPPED PIPES SHALL BE LOCATED WITH GREEN PLASTIC TAPE IN THE SAME MANNER AS RISERS.
- CONNECTING TO EXISTING MANHOLES: PRIOR TO LAYING SEWER LINES USING EXISTING STUBS IN EXISTING MANHOLES, THE CONTRACTOR SHALL EXPOSE AND VERIFY THE ELEVATION, GRADE AND ALIGNMENT OF EXISTING STUBS AND NOTIFY THE ENGINEER OF ANY DEVIATION FROM THE PLANS. WHERE THE STUB IS UNUSABLE DUE TO ELEVATION GRADE OR ALIGNMENT, THE CONTRACTOR SHALL REMOVE THE STUB AND PLUG THE HOLE, AND RESHAPE THE EXISTING MANHOLE INVERT TO PROVIDE SMOOTH FLOW. WHERE CONNECTING TO AN EXISTING MANHOLE THAT DOES NOT HAVE AN EXISTING STUB, THE CONTRACTOR SHALL CORE CUT INTO EXISTING MANHOLE WALL TO MAKE CONNECTION USING APPROVED WATER STOP GASKET, AND RESHAPE THE EXISTING MANHOLE INVERT TO PROVIDE SMOOTH FLOW. THE COST TO CONNECTING TO EXISTING MANHOLES IS INCIDENTAL TO THE PROJECT.
- CONTRACTOR SHALL LIMIT THE EXTENT OF TRENCH OPEN OVERNIGHT AND WEEKENDS TO LESS THAN 50 FEET.
- CONTRACTOR SHALL PROVIDE POSITIVE DRAINAGE AWAY FROM ALL MANHOLE COVERS.
- THE CONTRACTOR SHALL PREVENT ANY CONSTRUCTION DEBRIS FROM ENTERING THE EXISTING SANITARY SEWER DURING CONSTRUCTION.
- THE CONTRACTOR SHALL BE RESPONSIBLE FOR MAINTAINING CONTINUOUS FLOW OF SEWAGE THROUGH CONSTRUCTION. CONTRACTORS PROPOSED METHOD FOR MAINTAINING SEWAGE FLOW SHALL BE SUBMITTED AND APPROVED BY THE SEWER MAINTENANCE DIVISION (316-268-4073) PRIOR TO STARTING AND BY-PASSING OF SEWAGE FLOWS.
- ANY OVER EXCAVATION FROM MANHOLE AND PIPE REMOVAL SHALL BE BACKFILLED WITH AB-3 COMPACTED TO 90-95% ASTM D698.
- THE CONTRACTOR SHALL PROTECT FROM DAMAGE AND SUPPORT EXISTING UTILITIES THROUGH CONSTRUCTION AS APPROVED BY THE UTILITY OWNER AND THE ENGINEER AT THE CONTRACTORS EXPENSE.
- THE CONTRACTOR SHALL INSTALL AND/OR MAINTAIN EROSION CONTROL METHODS AS SPECIFIED. THE GENERAL LOCATION OF THE REQUIRED EROSION CONTROL IS ILLUSTRATED ON THE EROSION CONTROL PLAN. THE CONTRACTOR SHALL BE RESPONSIBLE FOR MAINTAINING THE EROSION CONTROL SHOWN THROUGH THE COMPLETION OF THIS PROJECT. INSTALLATION OF THESE BMP'S DOES NOT RELIEVE THE CONTRACTOR OF THE RESPONSIBILITY OF ABATING SOIL EROSION.
- PIPE AND MANHOLES SHALL BE ABANDONED PER CITY OF WICHITA STANDARD SPECIFICATIONS. MANHOLE CASTINGS SHALL BE SALVAGED, CLEANED, AND DELIVERED TO KTA. WHERE EXISTING PIPE TO BE ABANDONED CONNECTS TO AN EXISTING MANHOLE THAT WILL REMAIN, THE PIPE SHALL BE PLUGGED, THE MANHOLE WALL SHALL BE GROUTED, THE MANHOLE FLOOR SHALL BE RESHAPED TO PROVIDE SMOOTH FLOW, AND MANHOLE COATINGS SHALL BE REPAIRED.

# SANITARY SEWER RELOCATION to serve **KTA HEADQUARTERS** 9401 E. KELLOGG DRIVE CITY OF WICHITA, KANSAS

Gary Janzen, P.E. City Engineer  
Project Number  
2020-004361 PPS (184011)  
KTA Contract No. 7778

**D. Reinhardt - City of Wichita, Inspector**  
Release Date: 12/21/2020  
: apr 12/23/20



## SHEET INDEX

SHEET NO. C101	TITLE SHEET AND GENERAL NOTES
SHEET NO. C102	KEY MAP AND BUBBLE MAP
SHEET NO. C103-C105	SANITARY SEWER LINE NO. 1
SHEET NO. C501	PRECAST SANITARY SEWER MANHOLE
SHEET NO. C502	MANHOLE FRAME AND COVER (SANITARY SEWER)
SHEET NO. C503	VERTICAL RISER ASSEMBLY SEWER DETAIL
SHEET NO. C504-C508	EROSION CONTROL BMP DETAILS (attached or available on the City's website)

SEE KEY MAP FOR BENCHMARKS,  
CONTROL POINTS, AND PROPERTY CORNERS.

MAY 2020

**APPROVED AS NOTED  
BY WICHITA PUBLIC WORKS  
ENGINEERING DIVISION**

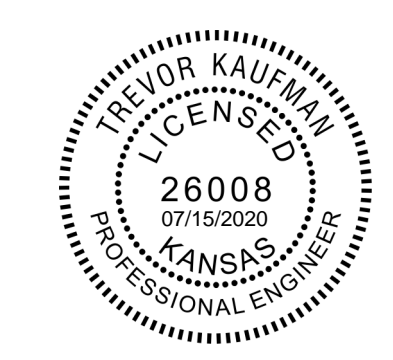
Engineering Approved by Seth Gotchey via Email 03/30/2020

Utilities Approved by Seth Gotchey via Email 03/30/2020

*NOTE TO CONTRACTORS*

*Inspection and testing for this project is to be provided by a Licensed Consulting Engineering Firm under contract with the Owner/Developer. Said Inspection to be in accordance with the City of Wichita standard construction engineering practices and certified by a Licensed Professional Engineer in the state of Kansas. No work shall be performed by the Contractor without such inspection nor shall any work be commenced without written authorization by City Engineering. All Construction and Materials shall comply with the current City of Wichita Specifications and Standards and Special Provisions. (on file and available at Wichita.gov).*

**An approved copy of these plans signed by City staff are required on-site.**



**Kansas Turnpike Authority**

*David E. Jacobson*  
David E. Jacobson, P.E.  
Director of Engineering

July 16, 2020  
Date

**PEC** PROFESSIONAL ENGINEERING CONSULTANTS, P.A.  
303 SOUTH TOPEKA WICHITA, KS 67202  
316-262-2691 www.pec1.com

Saved: 05-05-2020, 11:33:58 AM by KURTIS DEWAT  
 File Path: C:\Users\kurtis.dewat\OneDrive\Documents\Drawings\190822-000-C101-TITLE-SHEET  
 U:\Wichita-Civil\2019\190822\000\Main\Drawings\190822-000-C101-TITLE-SHEET

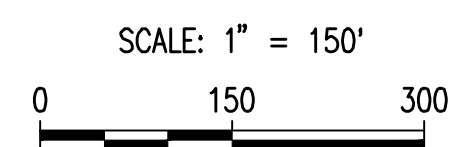
SAVED 3/11/2020 3:43:45 PM BY CSI  
 PLOTTED 3/27/2020 3:44:10 PM BY KURTIS DEKAT  
 U:\WICHITA-CIVIL\2019\190822\000\MIDDRAWINGS\190822-000-C102-KEY MAP AND BUBBLE MAP.DWG



EXISTING MH  
 REMOVE 8" PIPE (E) AND PLUG OPENING  
 REF. GENERAL NOTE #25, SHEET C101.

SANITARY SEWER LINE NO. 1				
COORDINATE LIST				
POINT	NORTHING	EASTING	STATION	DESCRIPTION
5001	1,682,884.7361	1,679,536.2711	0+00.00	EXISTING MH SSM 7
5002	1,682,885.4619	1,679,576.3571	0+40.00	MH 1
5003	1,682,713.0679	1,679,601.1678	2+14.18	MH 2
5004	1,682,620.8263	1,679,641.0057	3+14.66	MH 3
5005	1,682,640.6817	1,679,829.7335	5+04.43	MH 4
5006	1,682,505.9933	1,679,869.3950	6+45.00	EXISTING MH SSM 4

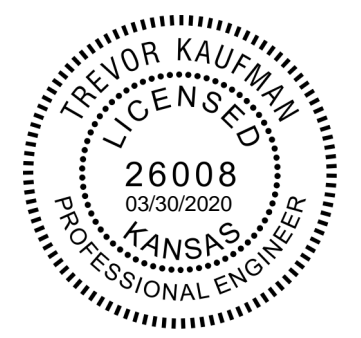
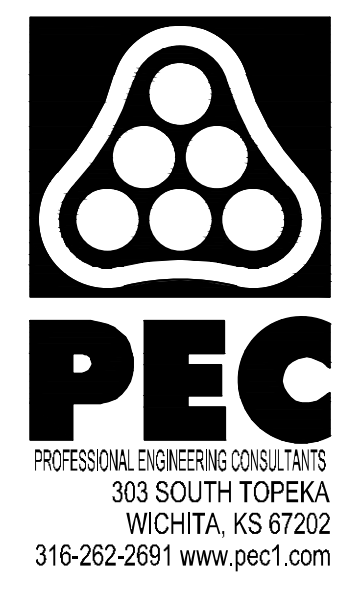
5000 = COORDINATE POINT NO.



- LEGEND**
- EXISTING SANITARY SEWER
  - PROPOSED SANITARY SEWER
  - EXISTING SANITARY SEWER W/MANHOLE
  - PROPOSED SANITARY SEWER W/MANHOLE
  - ××× EXISTING SANITARY SEWER TO BE ABANDONED

- BENCH MARK LIST**  $\oplus$  BM #101
- BM #101 - CHISELED SQUARE SW CORNER HEADWALL OF AREA INLET, SSE OF TOLL BOOTHS, E SIDE OF TURNPIKE ENTRANCE. ELEV.=1353.34 (NAVD88)
  - BM #102 - CHISELED SQUARE CENTER OF HEADWALL FOR ELECTRIC PANEL, DIRECTLY W OF TOLL BOOTHS. ELEV.=1363.40 (NAVD88)

- CONTROL POINTS**  $\odot$  1
- Pt. No. 1  
 N: 1,682,524.0110, E: 1,679,976.2280  
 #4 BAR W/PEC CAP WEST OF KTA MAIN OFFICE  
 1. 23.90' ESE TO 60D NAIL IN 12 STUMP  
 2. 35.45' TO BACK OF CURB WEST SIDE OF PARKING LOT  
 3. 24.7' S TO 12" PINE TREE
  - Pt. No. 2  
 N: 1,682,579.3390, E: 1,679,818.1120  
 #4 BAR W/PEC CAP EAST SIDE TURNPIKE ENTRANCE  
 1. 25.55' N TO CHISELED SQUARE  
 2. 39.00' E TO NORTH SIDE 18" PINE (MIDDLE OF 3 TREES)  
 3. 89.70' SE TO CENTER OF SSM
  - Pt. No. 3  
 N: 1,682,894.8410, E: 1,679,606.9910  
 #4 BAR W/PEC CAP AT SW CORNER PARKING AREA W SIDE TOLLBOOTH  
 1. 3.50' N TO BACK OF CURB AT SW CORNER PARKING  
 2. 34.83' E TO N.W. BOLT OVERHEAD K-TAG SIGN BASE
  - Pt. No. 4  
 N: 1,682,571.9410, E: 1,679,648.8920  
 #4 BAR W/PEC CAP NORTHWEST OF TOLLBOOTH  
 1. 22.4' E TO CURVE RIGHT 30 M.P.H. SIGN  
 2. 22.3' NNW TO CENTER W FACE HEADWALL  
 3. 110.00' SSW TO CENTER OF MH



**SANITARY SEWER RELOCATION  
 TO SERVE  
 KTA HEADQUARTERS**

GARY JANZEN, P.E. - CITY ENGINEER  
 PRIVATE PROJECT NO. 2020-00436 PPS (184011)

Issue:	
JOB NO.	35-190822-000-0421
DATE	JANUARY 2020
PM	RWG
DESIGNED BY	TBK
DRAWN BY	KTD
CHECKED BY	RWG

KEY MAP AND BUBBLE MAP

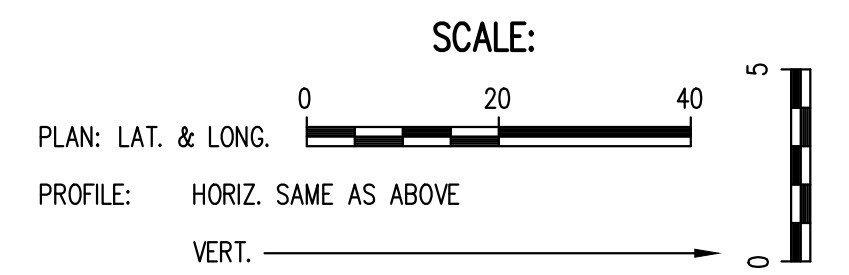
**C102**



**SANITARY SEWER RELOCATION  
TO SERVE  
KTA HEADQUARTERS**

GARY JANZEN, P.E. - CITY ENGINEER  
PRIVATE PROJECT NO. 2020-00436 PPS (184011)

Issue:		
△	REVISION 1	5/06/20
JOB NO. 35-190822-000-0421		
DATE JANUARY 2020		
PM RWG		
DESIGNED BY TBK		
DRAWN BY KTD		
CHECKED BY RWG		
SANITARY SEWER LINE NO. 1		
<b>C103</b>		



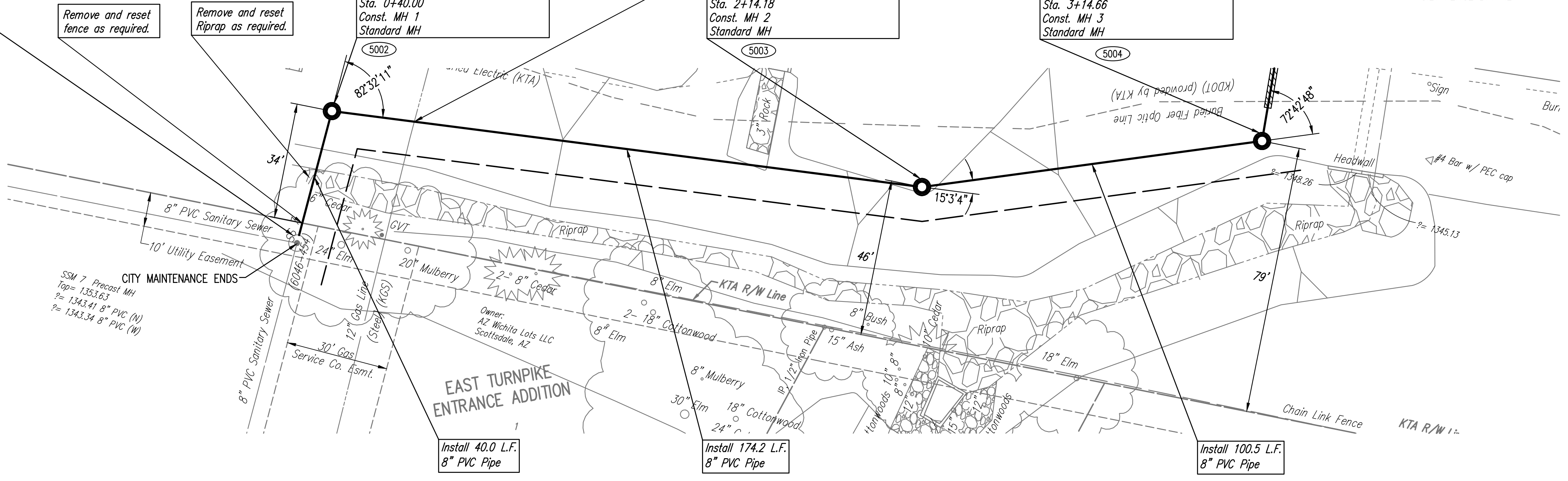
**CAUTION !!!**  
12" Gas Line (KGS)  
Support through construction. Contractor shall contact Tanner Werth with KGS at 316-272-6976 two business days before crossing the pipeline.

N: 1,682,884.9540, E: 1,679,536.3100  
Sta. 0+00.00  
EXISTING MH SSM 7  
Core existing concrete MH and Install New 8" Pipe. Seal new 8" Pipe to MH with an approved waterstop gasket and non-shrink grout. Construct a minimum of 3' Crushed Rock Encasement from MH wall. Reshape MH floor to provide smooth flow. This work shall be considered subsidiary to the price bid for pipe in place.

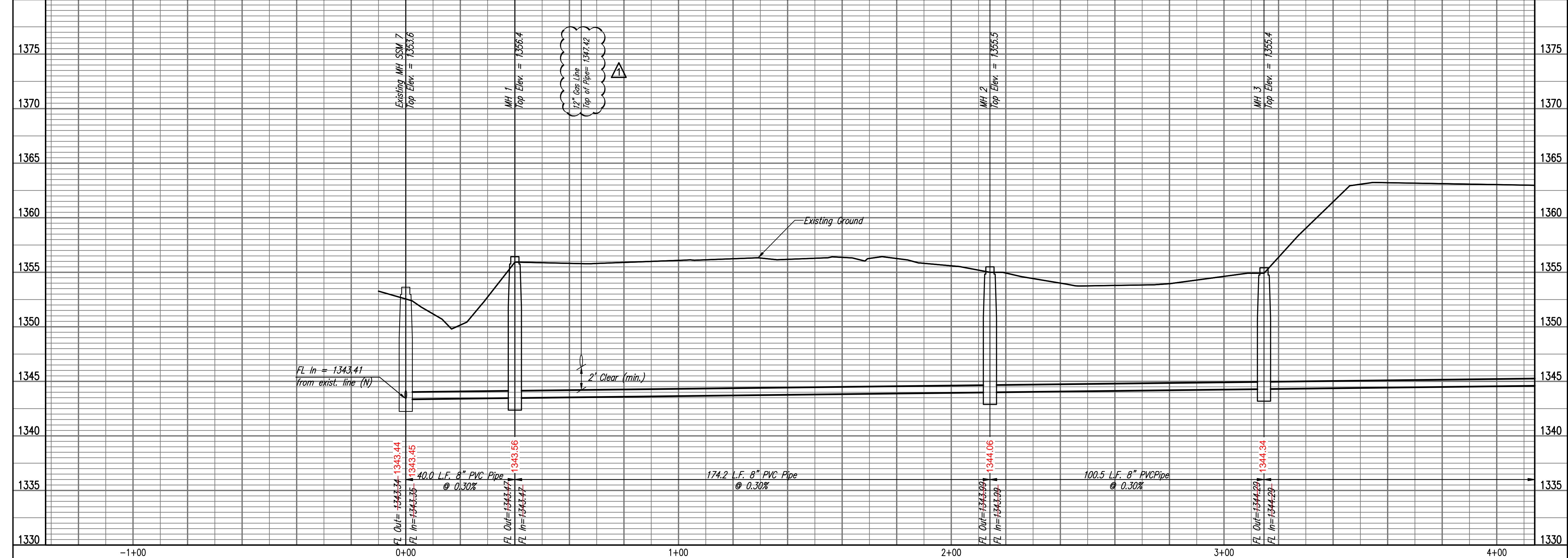
N: 1,682,885.4971, E: 1,679,576.3063  
Sta. 0+40.00  
Const. MH 1  
Standard MH

N: 1,682,713.1163, E: 1,679,601.2739  
Sta. 2+14.18  
Const. MH 2  
Standard MH

N: 1,682,620.8263, E: 1,679,641.0057  
Sta. 3+14.66  
Const. MH 3  
Standard MH



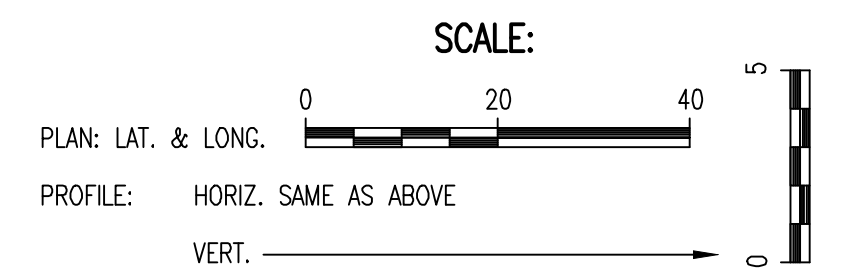
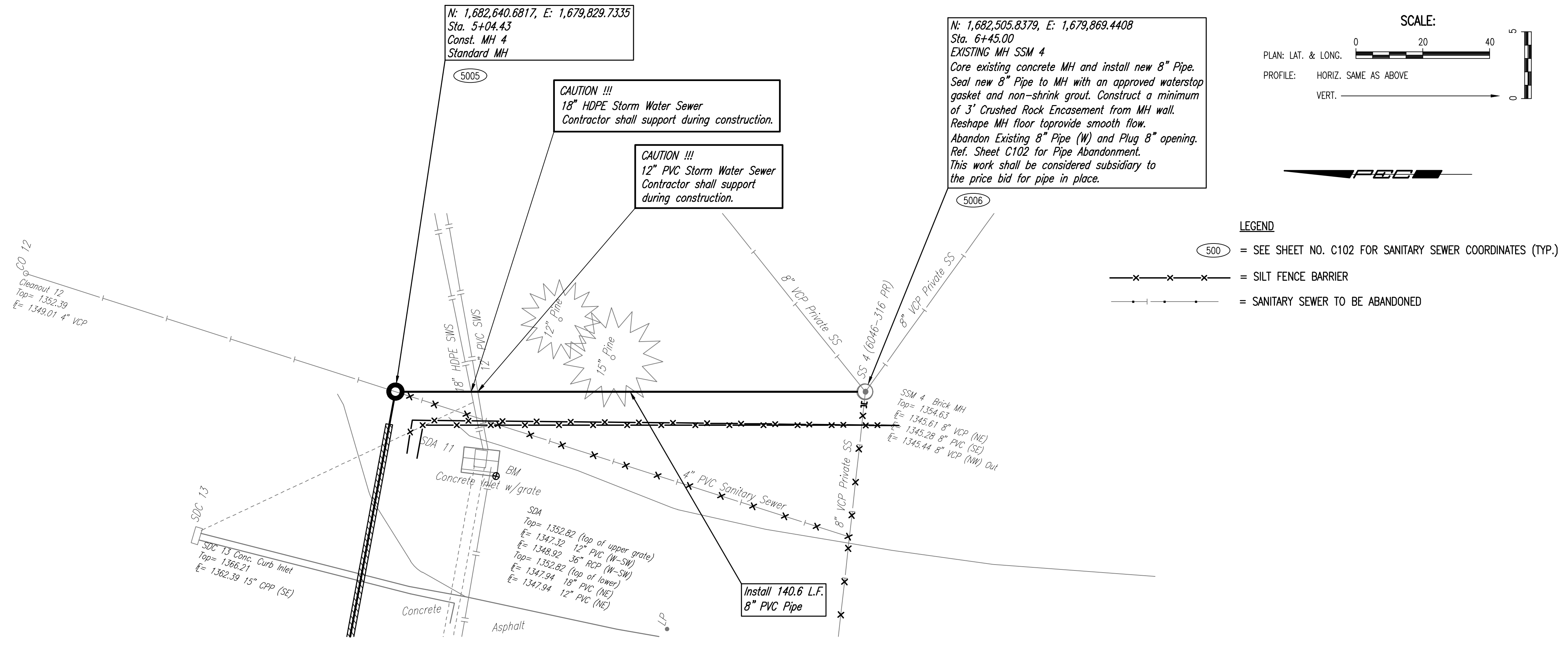
SANITARY SEWER LINE NO. 1



SAVED 5/6/2020 4:43:55 PM BY TREVOR KAUFMAN  
PLOTTED 5/8/2020 2:29:34 PM BY TREVOR KAUFMAN, PE  
U:\WICHITA-CIVIL\2019\190822\000\MIDRAWINGS\190822-000-C103-SANITARY SEWER LINE NO.1.DWG

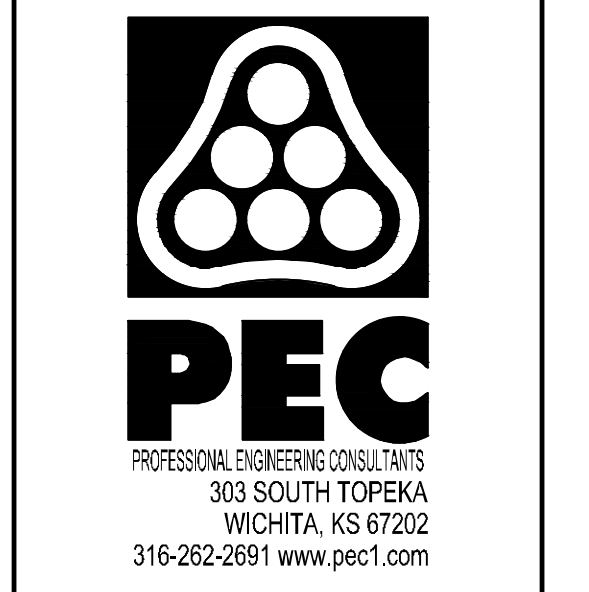
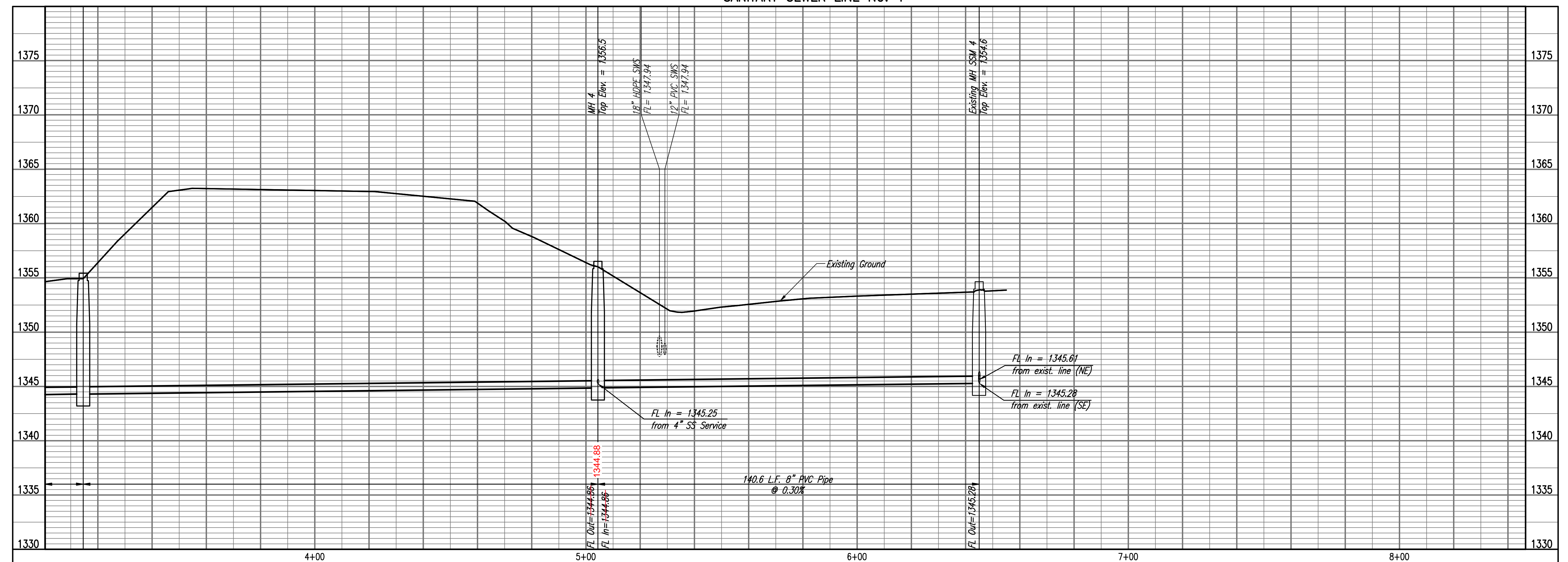


SAVED 3/11/2020 4:51:11 PM BY CSI  
 PLOTTED 3/27/2020 3:45:27 PM BY KURTIS DEKAT  
 U:\WICHITA-CIVIL\2019\190822\000\MIDDRAWINGS\190822-000-C105-SANITARY SEWER LINE NO.1.DWG



- LEGEND**
- (500) = SEE SHEET NO. C102 FOR SANITARY SEWER COORDINATES (TYP.)
  - x---x---x--- = SILT FENCE BARRIER
  - +---+---+---+ = SANITARY SEWER TO BE ABANDONED

**SANITARY SEWER LINE NO. 1**



**SANITARY SEWER RELOCATION  
 TO SERVE  
 KTA HEADQUARTERS**

GARY JANZEN, P.E. - CITY ENGINEER  
 PRIVATE PROJECT NO. 2020-00436 PPS (184011)

Issue:	
JOB NO.	35-190822-000-0421
DATE	JANUARY 2020
PM	RWG
DESIGNED BY	TBK
DRAWN BY	KTD
CHECKED BY	RWG

SANITARY SEWER LINE NO. 1

**C105**