

GENERAL NOTES

- THE CONTRACTOR SHALL COMPLY WITH ALL APPLICABLE SAFETY REGULATIONS. ALL CONSTRUCTION SHALL BE COMPLETED FOLLOWING CURRENT CITY STANDARD SPECIFICATIONS AND SPECIAL PROVISIONS.
- CONTRACTOR WILL BE REQUIRED TO PROVIDE NOTICE TO UTILITY COMPANIES A MINIMUM OF SEVENTY-TWO (72) HOURS PRIOR TO ANY EXCAVATION, AS FOLLOWS:

KANSAS ONE-CALL 687-2470

THE CONTRACTOR MUST NOTIFY THE FOLLOWING IN CASE OF AN EMERGENCY:

AT&T 1-800-246-8464
 BLACK HILLS ENERGY 1-800-694-8989
 CITY OF WICHITA WATER & SEWER 1-316-219-8921
 CITY OF WICHITA STORMWATER 1-316-268-4090
 CITY OF WICHITA TRAFFIC 1-316-268-4034
 COX COMMUNICATIONS 1-888-249-3530
 KANSAS GAS SERVICE 1-888-482-4950
 WESTAR ENERGY 1-800-544-4857

- UTILITY SERVICE LINES, POLES, ETC. ARE TO BE ADJUSTED AS NECESSARY BY OTHERS PRIOR TO CONSTRUCTION UNLESS THE PLANS SPECIFICALLY CALL FOR THEIR ADJUSTMENT BY THE CONTRACTOR OR UNLESS THE PLANS SPECIFICALLY IDENTIFY A UTILITY TO BE ADJUSTED BY ITS OWNER DURING CONSTRUCTION. EXISTING UTILITIES AND THEIR LOCATION, AS SHOWN ON THE PLANS, REPRESENT THE BEST INFORMATION OBTAINABLE FOR DESIGN. THE CONTRACTOR WILL BE REQUIRED TO WORK AROUND EXISTING UTILITIES WITHIN THE RIGHT-OF-WAY WHICH DO NOT CONFLICT WITH PROPOSED CONSTRUCTION.

- RUBBLE FROM THE REMOVAL OF MISCELLANEOUS STRUCTURES AND EXCESS EXCAVATION WHICH IS TO BE WASTED SHALL BE DISPOSED OF ON SITES TO BE PROVIDED BY THE CONTRACTOR. THESE SITES SHALL BE APPROVED BY THE ENGINEER AS TO SUITABILITY, APPEARANCE AND SITE LOCATION. LOCATIONS, IN THE OPINION OF THE ENGINEER, THAT WILL LEAVE AN UNSIGHTLY APPEARANCE WILL NOT BE APPROVED. ALL DISPOSAL SITES MUST BE APPROVED BY THE KANSAS DEPARTMENT OF HEALTH AND ENVIRONMENT. MATERIAL EITHER STOCKPILED OR DISPOSED OF IN A FLOOD PLAIN WILL REQUIRE A KANSAS STATE BOARD OF AGRICULTURE PERMIT. ANY MATERIAL DUMPED IN WATERS OF THE UNITED STATES OR WETLANDS IS SUBJECT TO U.S. CORPUS OF ENGINEERS PERMITTING REGULATIONS. ANY MATERIAL BURIED OR STOCKPILED BEYOND APPROVED CONSTRUCTION LIMITS WILL REQUIRE ADDITIONAL ARCHAEOLOGICAL INVESTIGATIONS UNLESS BURIED IN A PREVIOUSLY APPROVED BORROW LOCATION.

- TREES AND SHRUBS IN PUBLIC RIGHT-OF-WAY WHICH ARE IN DIRECT CONFLICT WITH PROPOSED NEW CONSTRUCTION SHALL BE REMOVED BY THE CONTRACTOR WITH THE CITY ENGINEER'S APPROVAL. TREES AND SHRUBS WHICH ARE NOT IN DIRECT CONFLICT WITH PROPOSED NEW CONSTRUCTION SHALL BE SAVED AND PROTECTED FROM DAMAGE.

- THE CONTRACTOR SHALL GIVE ALL PROPERTY OWNERS AND/OR TENANTS OF DEVELOPED PROPERTY ADJUTING THE CONSTRUCTION OF THIS PROJECT A MINIMUM OF TEN (10) DAYS NOTICE PRIOR TO START OF CONSTRUCTION.

- THE CONTRACTOR SHALL BE RESPONSIBLE FOR PRESERVING PROPERTY IRONS. THE CONTRACTOR WILL BE REQUIRED TO RE-ESTABLISH ANY PROPERTY IRONS WHICH ARE DAMAGED OR DESTROYED BY HIS CONSTRUCTION OPERATIONS. SUCH IRONS SHALL BE RE-ESTABLISHED BY A LICENSED LAND SURVEYOR IN ACCORDANCE WITH STATE LAWS.

- THE ENGINEERING DIVISION SHALL FIELD LOCATE WATER VALVES ONE TIME DURING CONSTRUCTION WHEN REQUESTED BY THE CONTRACTOR. IT SHALL BE THE CONTRACTOR'S RESPONSIBILITY TO PRESERVE SUCH FIELD LOCATIONS DURING THE CONSTRUCTION PROCESS. WATER VALVES, VALVE BOXES OR FIRE HYDRANTS DAMAGED DURING CONSTRUCTION SHALL BE REPAIRED BY CONTRACTOR AT HIS OWN EXPENSE. VALVE BOXES AND WATER METERS WITHIN THE PROJECT LIMITS SHALL BE ADJUSTED TO MATCH FINAL GRADES BY THE CONTRACTOR.

- THE CONTRACTOR SHALL NOTIFY THE INSPECTING ENGINEER AND TOM MASON AT 316-268-4574 WITH THE CITY OF WICHITA WITH THE ANTICIPATED CONSTRUCTION START DATE AND NOTIFY THEM OF PROJECT COMPLETION. STAKING AND INSPECTION FOR THIS PROJECT WILL BE THE RESPONSIBILITY OF THE CONTRACTOR.

- IF TRAFFIC WILL BE IMPACTED BY CONSTRUCTION, A TRAFFIC CONTROL PLAN MUST BE SUBMITTED AND APPROVED BY THE CITY TRAFFIC ENGINEER, BRIAN COON AT BTAF@CITYOFWICHITA.GOV BEFORE CONSTRUCTION CAN BEGIN. THE CONTRACTOR SHALL BE RESPONSIBLE FOR ALL TRAFFIC CONTROL MEASURES TO FACILITATE CONSTRUCTION. ALL CONSTRUCTION ZONE MARKINGS AND SIGNAGE SHALL CONFORM TO THE LATEST VERSION OF THE MANUAL ON UNIFORM TRAFFIC CONTROL DEVICES (MUTCD) AS PUBLISHED BY THE US DEPT. OF TRANSPORTATION, FEDERAL HIGHWAY ADMINISTRATION. ALL COSTS ASSOCIATED WITH CONSTRUCTION MARKINGS AND SIGNAGE SHALL BE THE CONTRACTORS RESPONSIBILITY.

- ALL ELEVATIONS SHOWN ARE NAVD 88.

- ALL AREAS DISTURBED DURING CONSTRUCTION THAT WILL NOT BE UNDER PROPOSED PAVEMENT SHALL BE RESTORED TO MATCH EXISTING CONDITIONS.

- ANY SIDEWALK, DRIVE APPROACH, CURB, OR STREET PAVEMENT REMOVED TO CONSTRUCT PROJECT MUST HAVE A PAVEMENT CUT PERMIT AND BE REPLACED BY THE CITY CONTRACTOR. PERMITS CAN BE OBTAINED BY CALLING 316-268-4501 OR 316-268-4480.

- ALL APPLICABLE FEES (TAP, EQUITY, IN LIEU OF & MAIN BENEFIT) MUST BE PAID BEFORE ANY CONNECTIONS CAN BE MADE ON THIS PROJECT. QUOTES CAN BE OBTAINED ON FEES BY CALLING 316-268-4555.

- CITY MAINTENANCE OF SANITARY SEWER MAINS ENDS AT LAST STRUCTURE WITHIN THE EASEMENT OR RIGHT-OF-WAY.

- ANY SERVICE LINE GREATER THAN 6" DIA. REQUIRE SPECIAL APPROVAL BY MABCD.

CONTROL POINTS

- CP-101
 N- 19523.139, E- 20001.182
- 1/2" Rebar with PEC Control Cap set flush with ground, Southeast of library
 - 8.45' North to chiseled "+" (BM 201) in top of curb
 - 2.40' East to edge of sidewalk
 - 19.5' Southeast to center of Jbox W12J47128

- CP-102
 N- 19084.605, E- 20084.037
- 1/2" Rebar with PEC Control Cap set flush with ground
 - East side of Sycamore Street, ±200' North to gravel road (Pacific Street)
 - 16.5' North to the west face of Light Pole TS169202,
 - 3.6' West/Southwest to chiseled square on curb (BM 202)
 - 7.6' South/Southeast to center of manhole cover

- CP-103
 N- 19122.373, E- 19542.491
- 1/2" Rebar with PEC Control Cap set flush with ground
 - North of Pacific Street extended, ±200' West to the CL of Osage Street
 - 16.0' West/Northwest to the Southeast corner of white tin building
 - 2.0' South to edge of gravel road
 - 14.3' Northeast to a fiber optic marker (AT&T)

- CP-104
 N- 19526.353, E- 19604.477
- 1/2" Rebar with PEC Control Cap set flush with ground, Southwest of library
 - 5.0' North to back of curb
 - 46.3' North/Northwest to top nut of fire hydrant
 - 87.0' West/Northwest to Southeast corner of brick building

- CP-105
 N- 19587.554, E- 19540.574
- 1/2" Rebar with PEC Control Cap set flush with ground, southwest of library
 - 36.5' East to West back of sidewalk
 - 30.4' Southwest to Southeast corner of brick building
 - 55.3' East/Southeast to top nut of fire hydrant

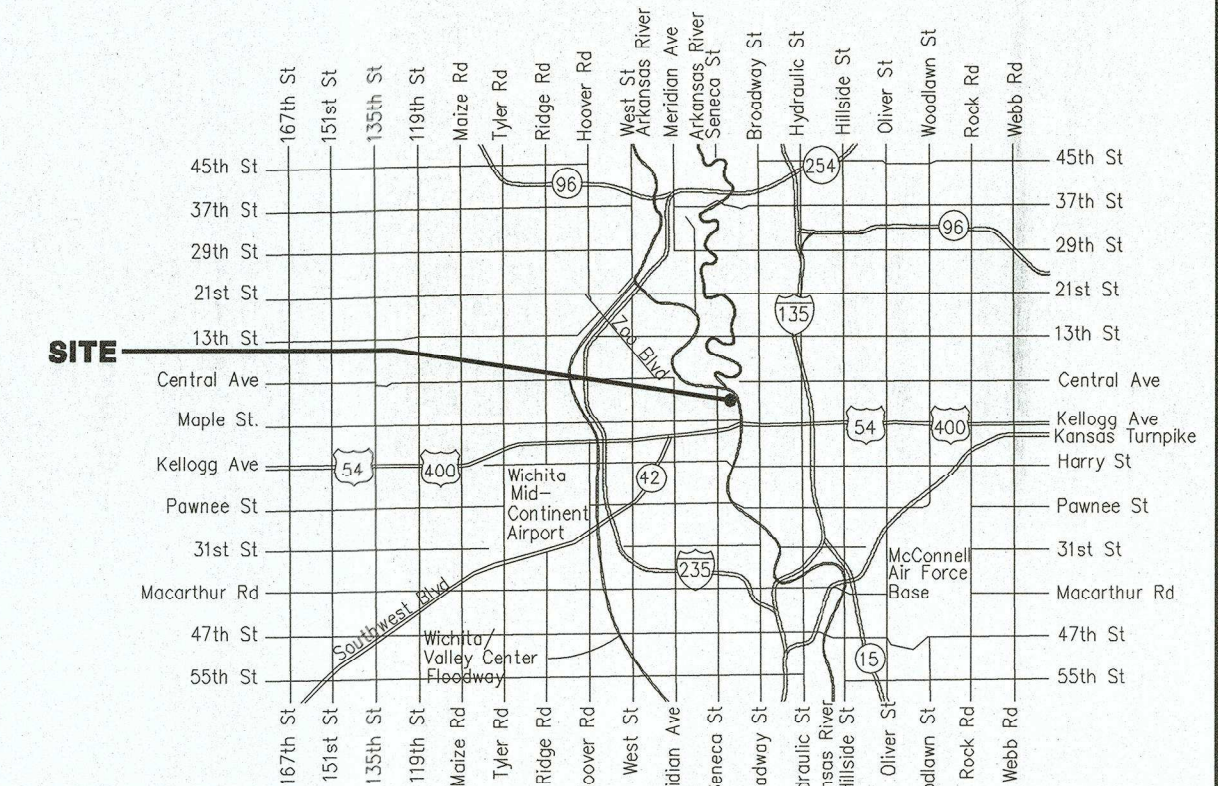
BENCHMARKS

- BMK-201 - CHISELED "+" ON TOP OF CURB SOUTHEAST OF THE LIBRARY, 13.0' NORTH TO THE CENTERLINE OF THE ASPHALT DRIVEWAY FOR THE LIBRARY, 43.0' WEST TO THE CENTERLINE OF SYCAMORE STREET, 25.9' SOUTH/SOUTHEAST TO THE CENTER OF JBOX W12J47128. ELEV. = 1302.160 NAVD88
- BMK-202 - CHISELED SQUARE ON TOP OF CURB, 14.8' WEST TO THE CENTERLINE OF SYCAMORE STREET, ±200' NORTH TO PACIFIC STREET, 18.4' NORTH TO WEST FACE OF LIGHT POLE TS169202, 36.0' NORTH TO THE SOUTH END OF STORM WATER INLET COVER. ELEV. = 1298.460 NAVD88
- BMK-203 - CHISELED SQUARE ON TOP OF AT&T VAULT, NORTH SIDE, ±20' NORTH OF PACIFIC STREET, ±25' WEST OF THE OAK STREET, 7.2' NORTH TO CHAIN-LINK FENCE, 34.6' EAST TO FIBER OPTIC MARKER (AT&T), 137.6' WEST TO THE SOUTHEAST CORNER OF THE WHITE TIN BUILDING. ELEV. = 1302.090 NAVD88
- BMK-204 - CHISELED SQUARE ON TOP OF CURB, LOCATED SOUTHWEST OF THE LIBRARY, 41.8' NORTH/NORTHWEST TO THE TOP NUT OF FIRE HYDRANT, 86.4' WEST/NORTHWEST TO THE SOUTHEAST CORNER OF THE BRICK BUILDING, 21.0' WEST TO THE CENTER OF THE SOUTH AREA INLET. ELEV. = 1299.760 NAVD88

SANITARY SEWER to serve EPC REAL ESTATE GROUP, LLC ADDITION 225 N SYCAMORE STREET CITY OF WICHITA, KANSAS

Gary Janzen, P.E. City Engineer
 Project Number 2383 PPS (184011)

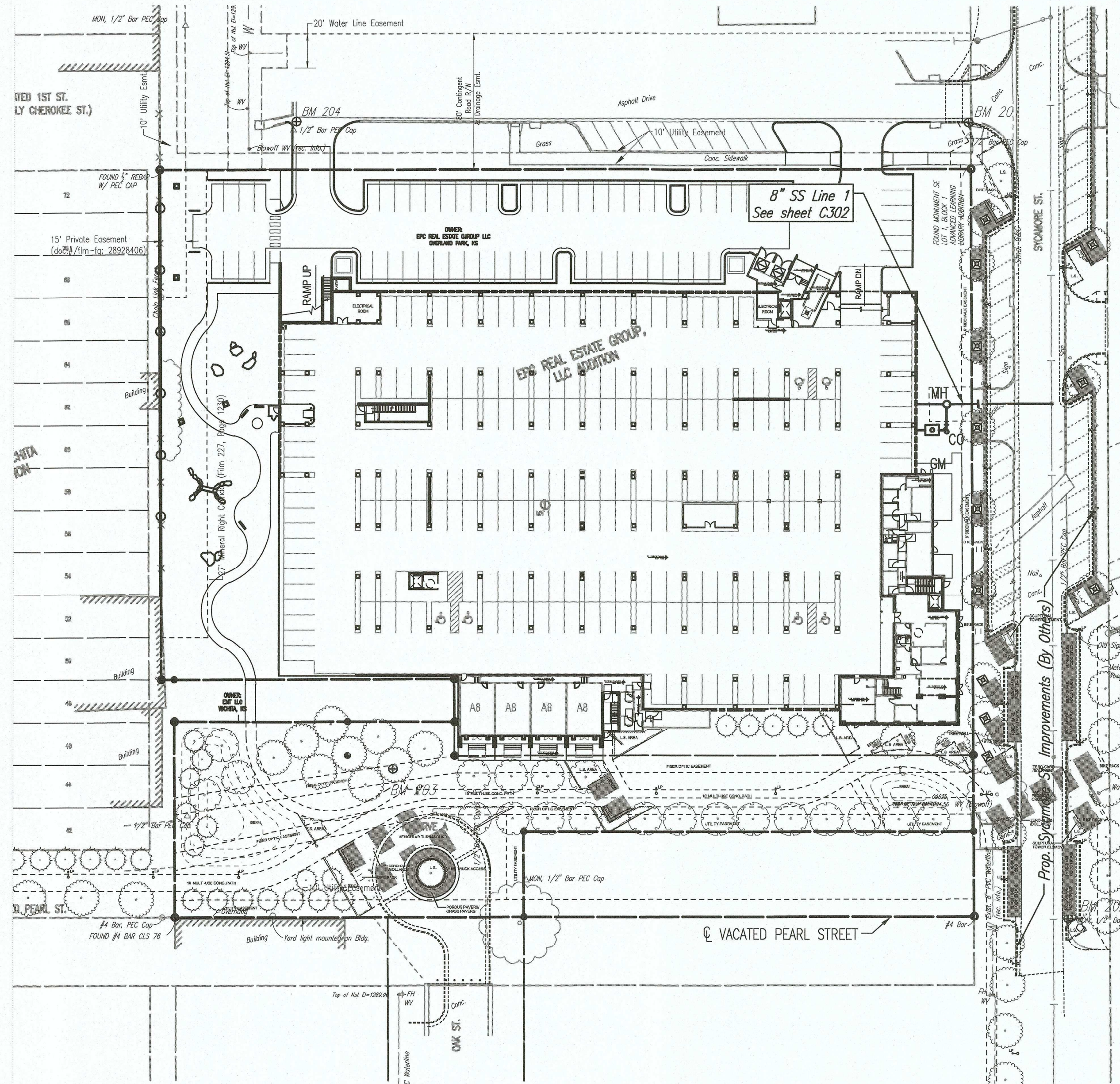
D. Reinhardt - City of Wichita, Inspector
 Release Date: 10/7/2020
 : apr 12/3/2020



Vicinity Map

SHEET INDEX

SHEET NO. C301	TITLE SHEET
SHEET NO. C302	SS LINE NO. 1
SHEET NO. C303	PRECAST SS MANHOLE DETAILS
SHEET NO. C304	SS FRAME AND COVER
SHEET NO. C109	EROSION CONTROL PLAN
SHEET NO. C501-C505	EROSION CONTROL BMP DETAILS
	(attached or available on the City's website)
SHEET NO. C601	COPY OF PLAT



AS BUILTS

Contractor: Ewertz Excavation 9/9/2020	Project Inspector: Larry Gann KEMILLER ENGINEERING PA 117 E. Lewis, Wichita, KS 67202 (316)264-0242
---	---

APPROVED AS NOTED BY WICHITA PUBLIC WORKS ENGINEERING DIVISION

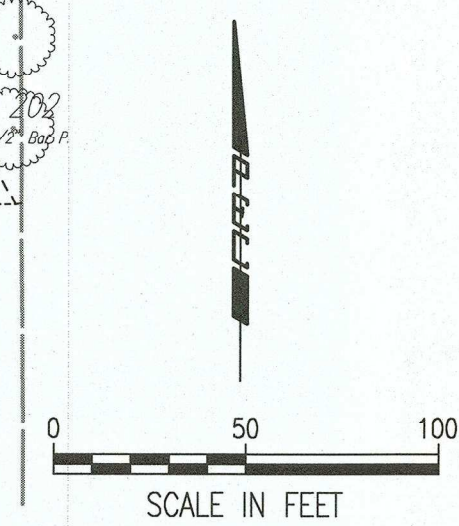
Engineering: *Nath Gutchev* 5.1.19
 Utilities: *[Signature]* 5.1.19

NOTE TO CONTRACTORS

Inspection and testing for this project is to be provided by a Licensed Consulting Engineering Firm under contract with the Owner/Developer. Said inspection to be in accordance with the City of Wichita standard construction engineering practices and certified by a Licensed Professional Engineer in the state of Kansas. No work shall be performed by the Contractor without such inspection nor shall any work be commenced without written authorization by City Engineering. All Construction and Materials shall comply with the current City of Wichita Specifications and Standards and Special Provisions. (on file and available at Wichita.gov).

An approved copy of these plans signed by City staff are required on-site.

April 2019



PPS TITLE SHEET
 SCALE: 1" = 50'

kloverarchitects incorporated
 10955 LOWELL AVENUE, SUITE 700 • OVERLAND PARK, KS 66210
 PH: 913.649.8181 • FX: 913.649.1275 • WWW.KLOVER.NET

THIS DRAWING has been prepared by the Architect, or prepared under his direct supervision and an instrument of service and is intended for use only on this project. All drawings, specifications, notes and design, including the overall layout, form, arrangement, and composition of spaces and materials, shall be the original work of the Architect. Any reproduction, use, or disclosure of the information contained herein without the written consent of the Architect is strictly prohibited.

© 2019 KLOVER ARCHITECTS, INC.

THE ARCHITECT DISCLAIMS responsibility for the existing building conditions, site conditions, existing construction elements, or any documents, drawings or other instruments used for any part of this Project which do not bear the Architect's seal. The Architect's services are limited to the design of the Project. The Architect is not responsible for the design of any other work.

RELATED DOCUMENTS: This Drawing is a single component of an integrated set of Construction Documents. General and Supplementary Conditions of the Contract, General Requirements, Specifications and other drawings may affect the Work described. Failure to review and integrate the design intent of the whole of the Construction Documents does not release the Contractor from providing a complete Project.

COMPLY WITH all laws, codes, ordinances and regulations with authorities having jurisdiction and with requirements of the Lender, if applicable. Do not start work until all permits and required approvals are obtained.

VERIFY ACTUAL CONDITIONS and dimensions prior to construction. Compensation of work contemplates verification and acceptance of all existing conditions. Inspection of a project or required item is not intended by others constitute acceptance of that item, and assumption of responsibility for satisfactory installation.

DIMENSIONS SHOWN are in feet and inches unless otherwise indicated. OMISSIONS & ERRORS: OMISSION - DO NOT SCALE drawings unless otherwise directed.

project title

EPC REAL ESTATE
 DELANO
 225 North Sycamore Street
 Wichita, KS 67203

project number 16042.001
 drawing issuance 04.04.2019
 drawing revisions
 No. Description: Date:



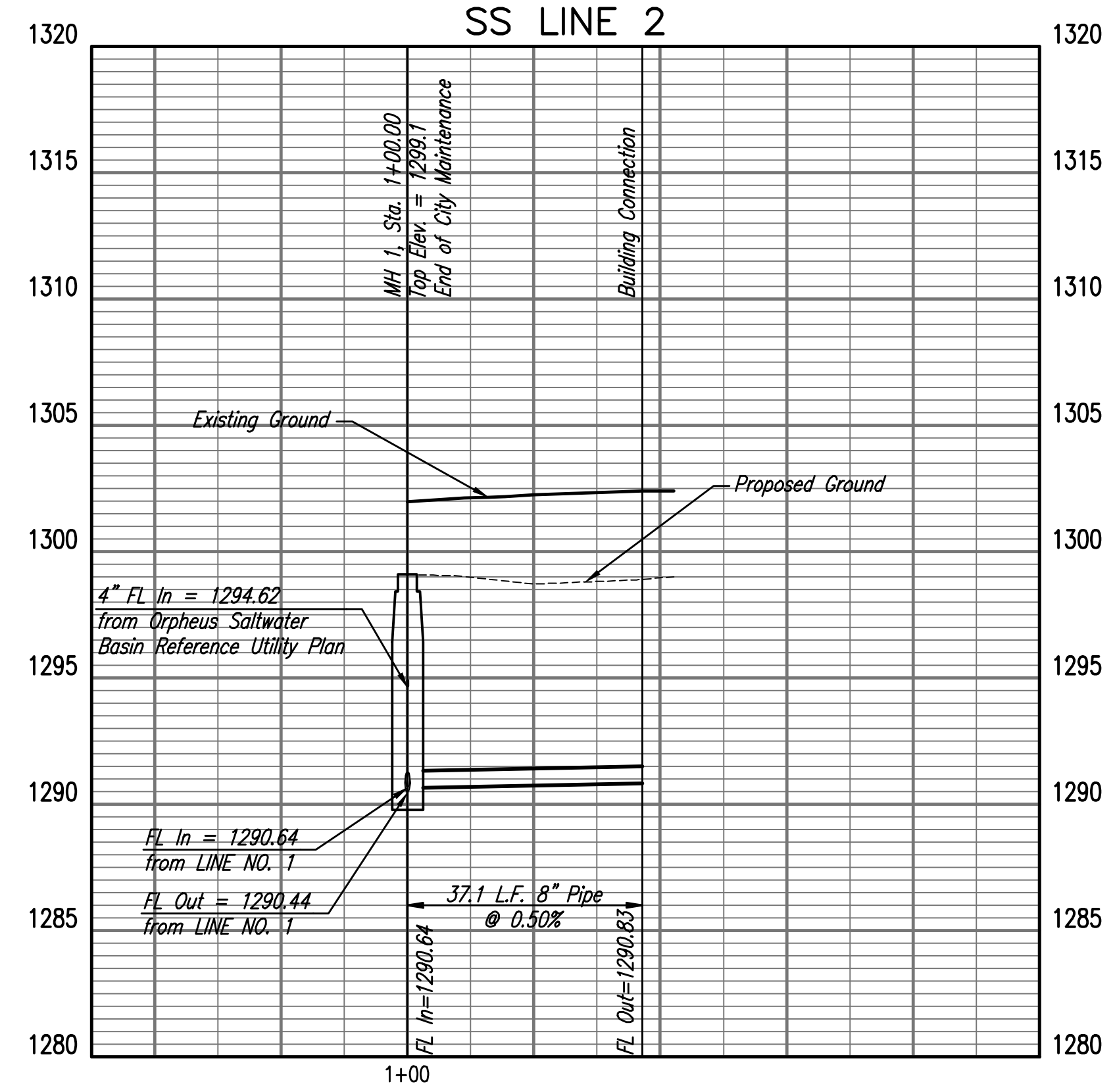
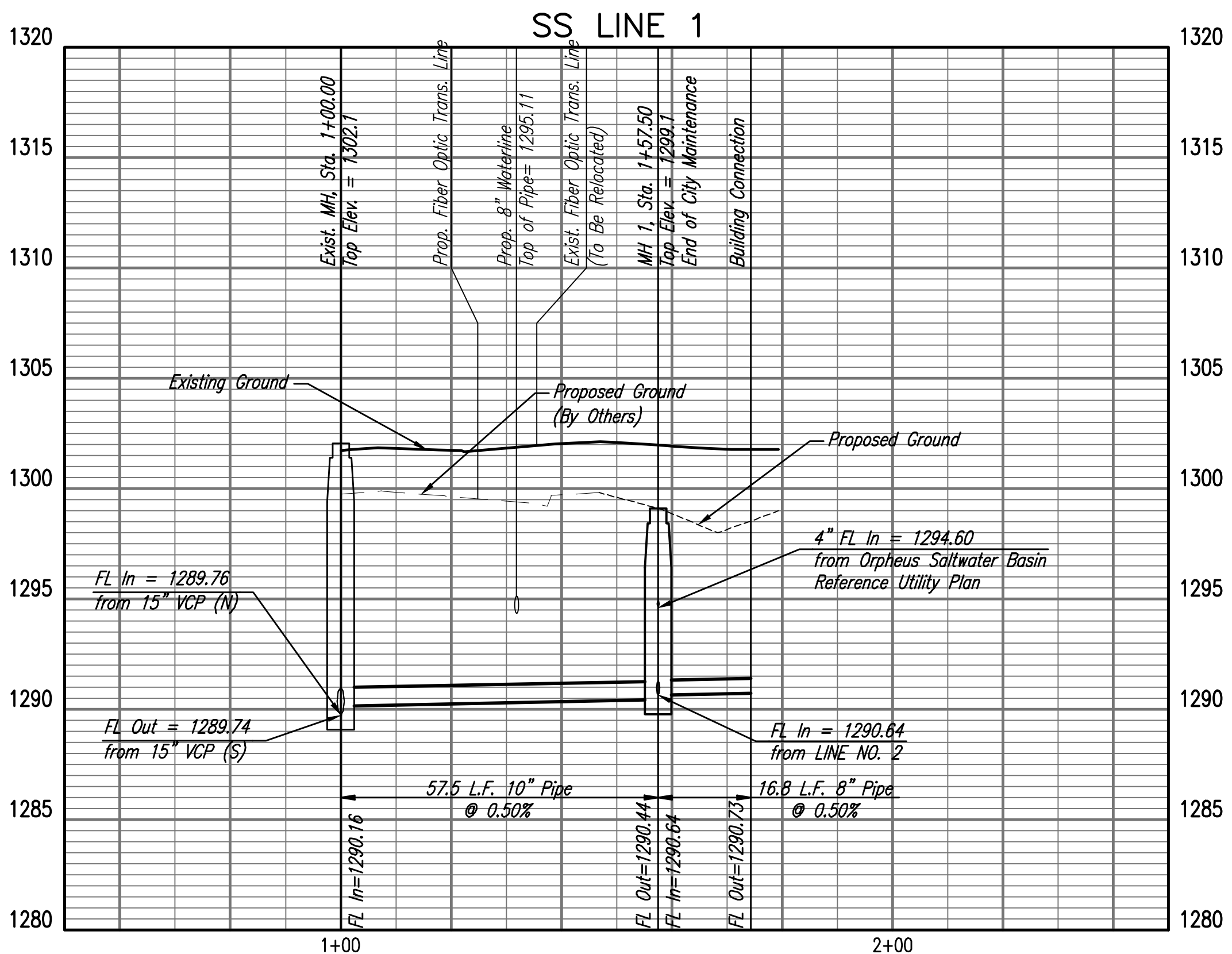
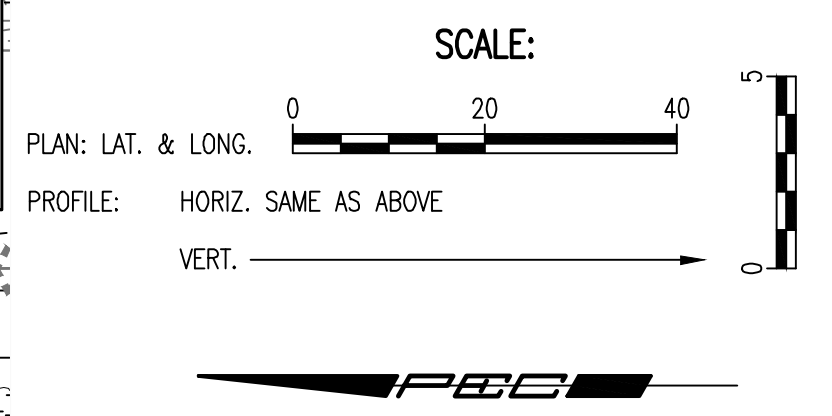
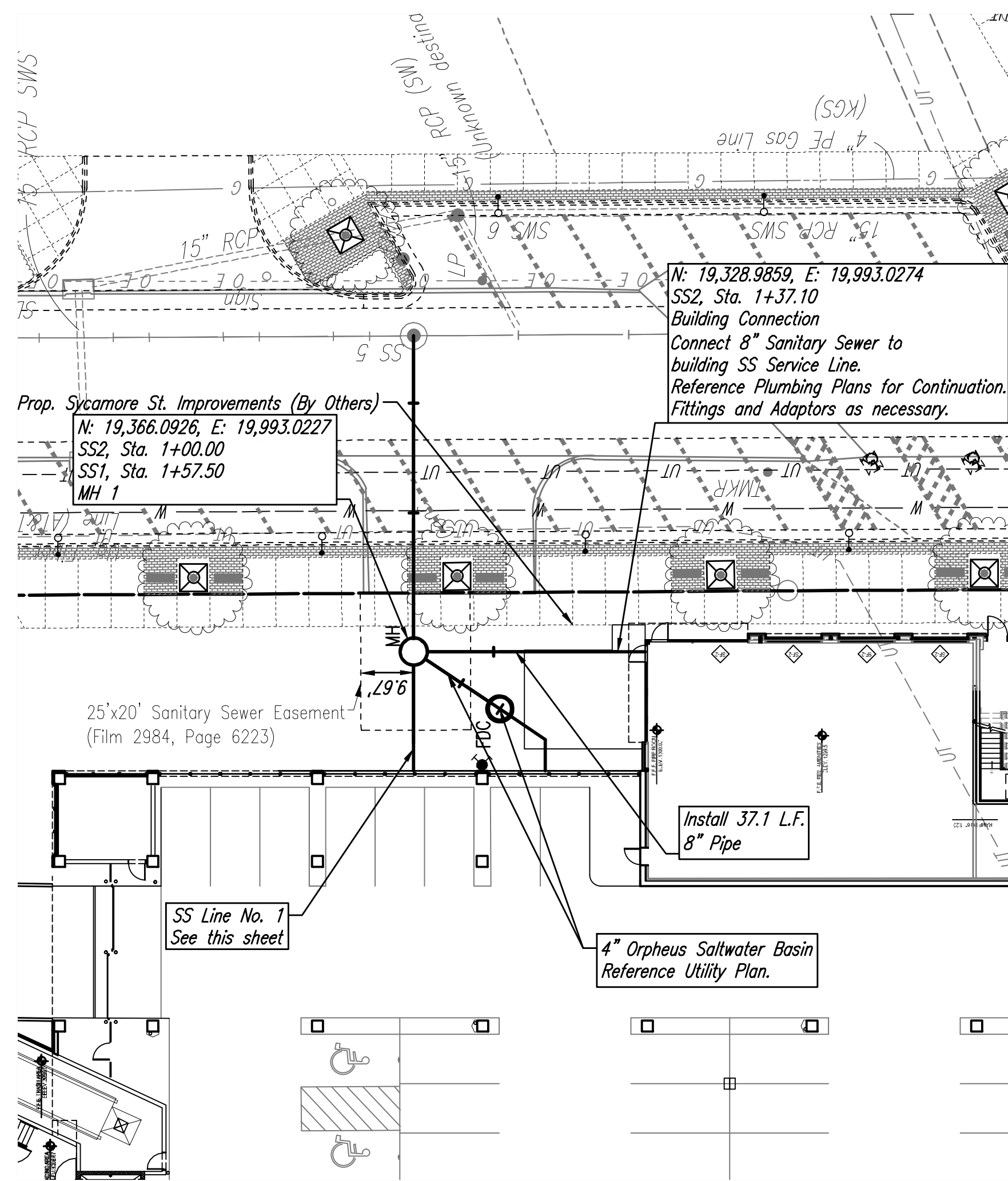
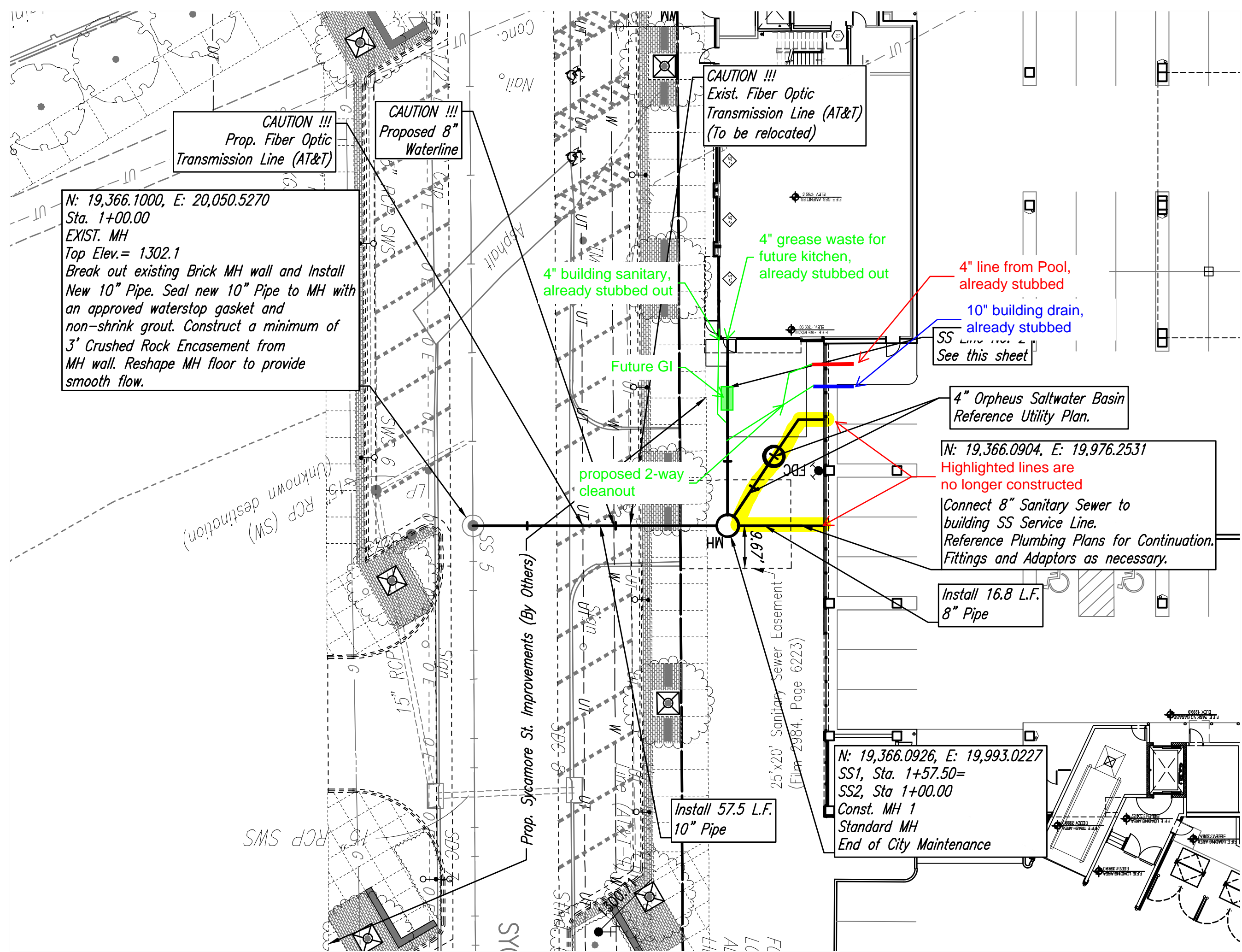
professionalseal

drawing title PPS TITLE SHEET

drawing number **C301**

Save Date: 04-24-2019 11:07:47 AM by: BET
 Print Scale: 1:1 04-29-2019 2:32:26 PM by: BET
 U:\Wichita-Civil\2016\160904\000\Drawings\PLANS\160904-000-C301.dwg

** ANY SERVICE LINE GREATER THAN 6" DIA. REQUIRE SPECIAL APPROVAL BY MABCD.



AS BUILTS

KEMILLER ENGINEERING PA

117 E. Lewis, Wichita, KS 67202 (316)264-0242

kloverarchitects incorporated

10955 LOWELL AVENUE, SUITE 700 • OVERLAND PARK, KS 66210
PH: 913.649.8181 • F: 913.649.1275 • www.klover.net

THIS DRAWING has been prepared by the Architect, or prepared under his direct supervision as an instrument of service and is intended for use only on the project. All drawings, specifications, ideas and designs, including the overall layout, form, arrangement, and composition of spaces and elements portrayed, constitute the original, unaltered work of the Architect. Any reproduction, use, or disclosure of the information contained herein without the written consent of the Architect is strictly prohibited.

THE ARCHITECT DISCLAIMS responsibility for the existing building structure, site conditions, existing construction elements, or any documents, drawings or other instruments and for any part of the Project which do not bear the Architect's seal. The Architect's services are undertaken only in the interest of the Project Owner. No liability is assumed by the Architect to be bound by any other party.

RELATED DOCUMENTS: This Drawing is a single component of an integrated set of Construction Documents. General and Supplementary Conditions of the Contract, General Requirements, Specifications and other drawings may affect the Work described. Failure to review and integrate the design intent of the whole of the Construction Documents does not relieve the Contractor from providing a complete Project.

COMPLY WITH all laws, codes, ordinances and regulations with authority being jurisdiction and with requirements of the Landlord, if applicable. Do not start Work until all permits and required approvals are obtained.

VERIFY ALL dimensions and elevations prior to construction. Commencement of work constitutes verification and acceptance of all existing conditions. Application of a material or equipment item to Work installed by others constitutes acceptance of that Work, and execution of responsibility for satisfactory installation.

DIMENSIONS SHOWN are to finish face of a material unless otherwise indicated. OMISSION & REVISIONS - IN NET SCALE UNLESS OTHERWISE NOTED.

project title

EPC REAL ESTATE

DELANO

225 North Sycamore Street
Wichita, KS 67203

project number 16042.001

drawing issuance Permit Set 06.04.19

drawing revisions

No. Description Date

COORDINATION REVIEW 12.13.19

professional seal

PEEC PROFESSIONAL ENGINEERING CONSULTANTS, P.A.
303 SOUTH TOPEKA WICHITA, KS 67202
316-262-2891 www.peec.com

24136
12/19/2019
KANSAS
PROFESSIONAL ENGINEER

drawing title SS LINE NO. 1 & NO. 2

drawing number **C302**

Saved 12-18-2019 8:19:32 AM by KURT HURAS
Plot Scale 1:1 12-18-2019 1:57:59 PM by BET
C:\Wichita-Civil\2019\160904\000\Drawings\PLAN\160904-000-C302