

RTWA REGION NO.	STATE	PROJECT NO.	FISCAL YEAR	SHEET NO.	TOTAL SHEETS
7	KANSAS	87N-0348-01	2007	2	135

0 50 100
SCALE: 1" = 100'

BENCHMARKS

BM#1 - City of Wichita Bench Mark Disc, Located at the Northwest Corner of Maize Road & 29th Street Intersection, approx 63.4' NW of the Section Corner.
Elev. = 1349.32 MSL (161.92 City Datum)
Sta. 62+23.3, 23.0' Lt, B.L. A

BM#2 - City of Wichita Bench Mark Disc, Located at the Northwest Corner of 119th Street & 29th Street Intersection.
Elev. = 1360.93 MSL (173.53 City Datum)
Sta. 9+68.1, 30.1' Lt, B.L. A

BM#3 - City of Wichita Bench Mark Disc, Located at 29th Street, 1/2 mile West of Maize Road.
Elev. = 1365.69 MSL (178.29 City Datum)
Sta. 36+41.5, 22.5' Rt, B.L. A

BM#4 - Small Railroad Spike on South face of the Power Pole, Located at the North Side of 29th Street 2nd Pole East of 119th Street.
Elev. = 1368.19 MSL (180.79 City Datum)
Sta. 14+68.6, 29.1' Lt, B.L. A

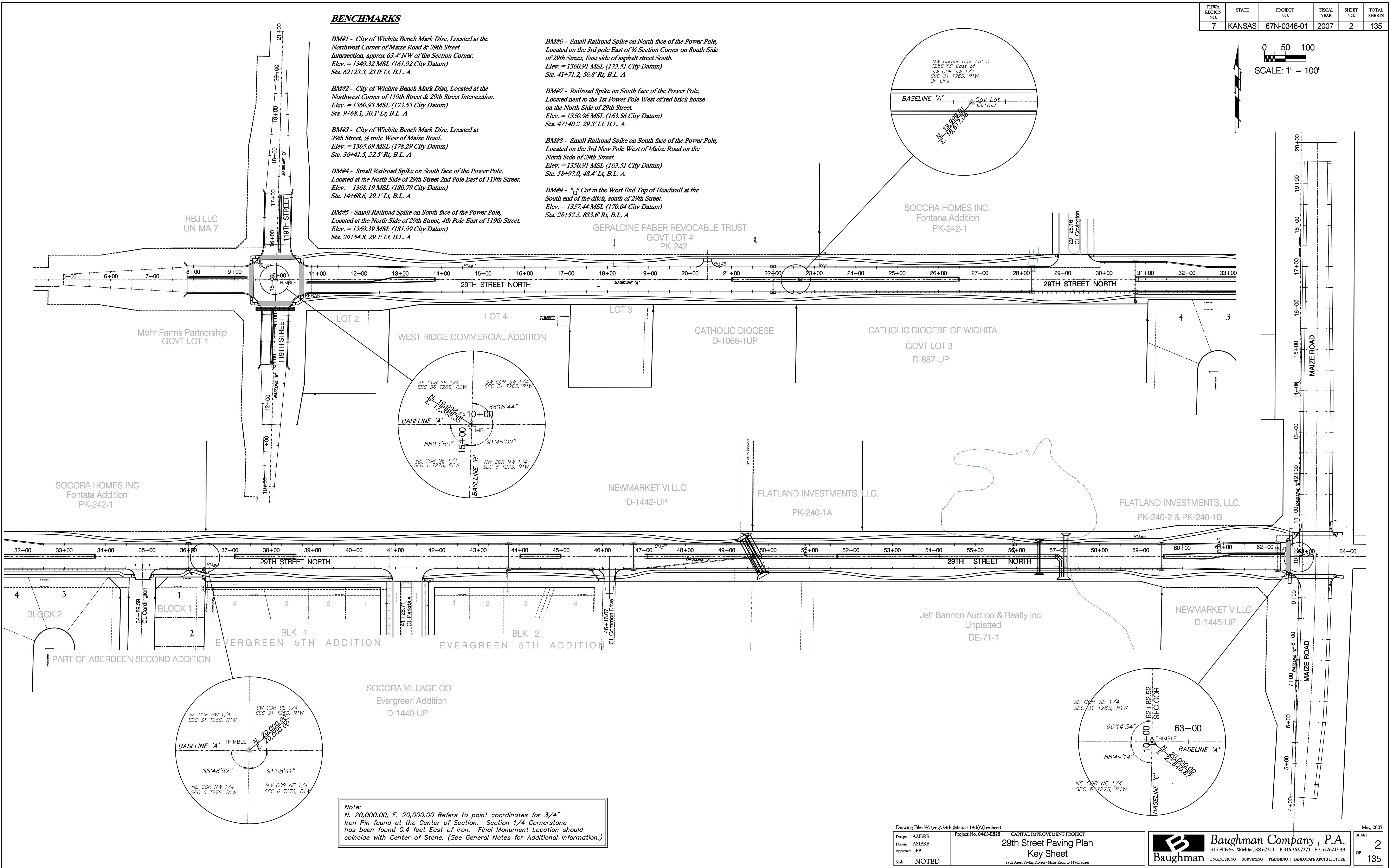
BM#5 - Small Railroad Spike on South face of the Power Pole, Located at the North Side of 29th Street, 4th Pole East of 119th Street.
Elev. = 1369.39 MSL (181.99 City Datum)
Sta. 20+54.8, 29.1' Lt, B.L. A

BM#6 - Small Railroad Spike on North face of the Power Pole, Located on the 3rd pole East of 1/4 Section Corner on South Side of 29th Street, East side of asphalt street South.
Elev. = 1360.91 MSL (173.51 City Datum)
Sta. 41+71.2, 56.8' Rt, B.L. A

BM#7 - Railroad Spike on South face of the Power Pole, Located next to the 1st Power Pole West of red brick house on the North Side of 29th Street.
Elev. = 1350.96 MSL (163.56 City Datum)
Sta. 47+40.2, 29.3' Lt, B.L. A

BM#8 - Small Railroad Spike on South face of the Power Pole, Located on the 3rd New Pole West of Maize Road on the North Side of 29th Street.
Elev. = 1350.91 MSL (163.51 City Datum)
Sta. 58+97.0, 48.4' Lt, B.L. A

BM#9 - "U" Cut in the West End Top of Headwall at the South end of the ditch, south of 29th Street.
Elev. = 1357.44 MSL (170.04 City Datum)
Sta. 28+57.5, 83.6' Rt, B.L. A



Note:
N. 20,000.00, E. 20,000.00 Refers to point coordinates for 3/4" Iron Pin found at the Center of Section. Section 1/4 Cornerstone has been found 0.4 feet East of Iron. Final Monument Location should coincide with Center of Stone. (See General Notes for Additional Information.)

Drawing File: F:\eng\29th (Maize-119th)\(keysheet)
Design: AZIERE Project No. 0403-E828
Drawn: AZIERE
Approved: JFB
Scale: NOTED

CAPITAL IMPROVEMENT PROJECT
29th Street Paving Plan
Key Sheet
29th Street Paving Project - Maize Road to 119th Street

Baughman Company, P.A.
315 Ellis St. Wichita, KS 67211 P 316-262-7271 F 316-262-0149
ENGINEERING | SURVEYING | PLANNING | LANDSCAPE ARCHITECTURE

May 2007
SHEET 2 OF 135