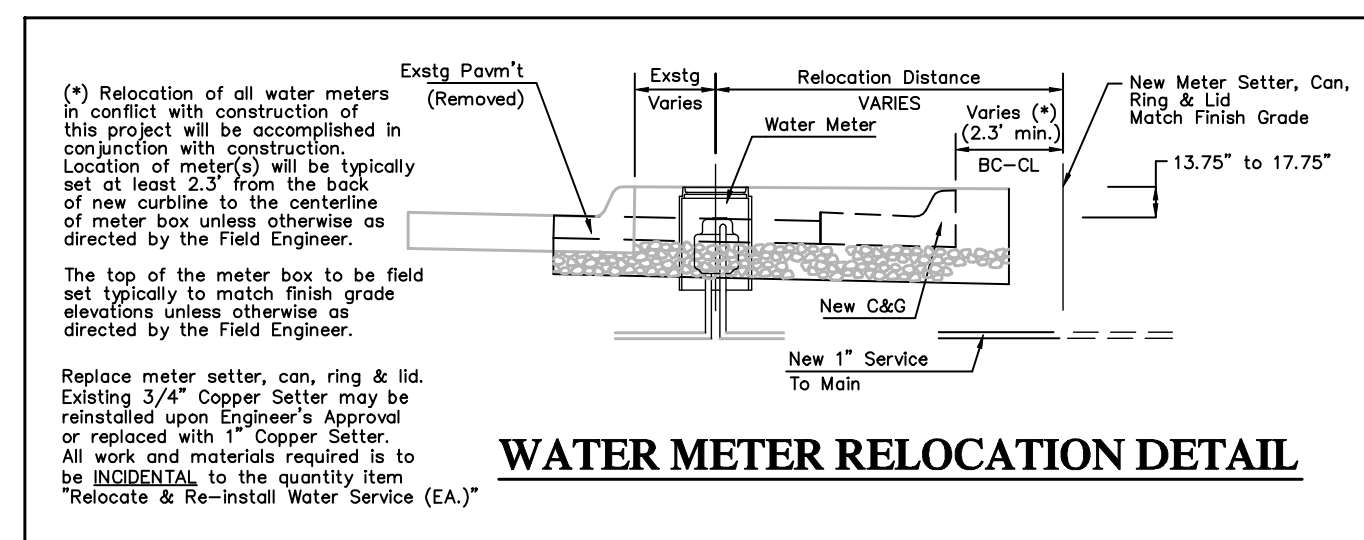


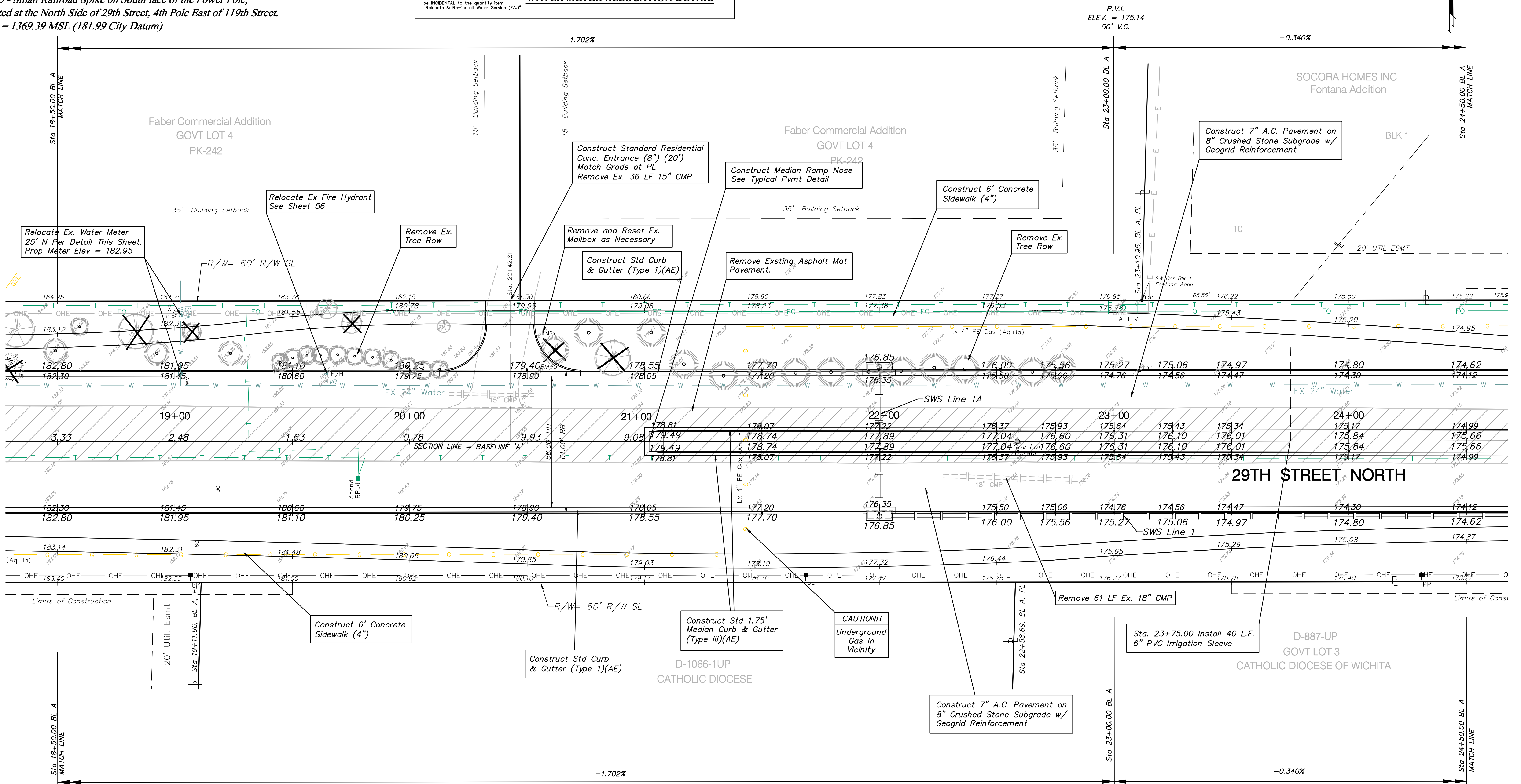
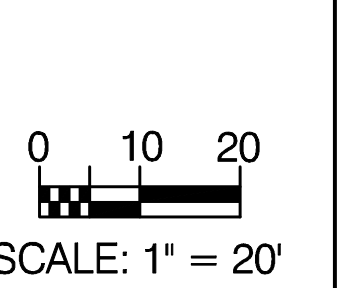
**BENCHMARKS**

**BM#4 - Small Railroad Spike on South face of the Power Pole,  
Located at the North Side of 29th Street 2nd Pole East of 119th Street.  
Elev. = 1368.19 MSL (180.79 City Datum)**

**BM#5 - Small Railroad Spike on South face of the Power Pole,  
Located at the North Side of 29th Street, 4th Pole East of 119th Street.  
Elev. = 1369.39 MSL (181.99 City Datum)**



PRWA REGION NO.	STATE	PROJECT NO.	FISCAL YEAR	SHEET NO.	TOTAL SHEETS
7	KANSAS	87N-0348-01	2007	10	135



**Note:**  
Trees/Shrubs to be removed are marked thus:

**Note:**  
Pavement, Sidewalks, and Etc. To Be Removed Are Indicated By:

Drawing File: F:\eng\29th (Maine-119th)\(Pav04)  
 Design: AZIERE  
 Drawn: AZIERE  
 Approved: JFB  
 Scale: NOTED

CAPITAL IMPROVEMENT PROJECT  
**29th Street Paving Plan**  
 Sta. 18+50 to Sta. 24+50  
 29th Street Paving Project - Main Road to 119th Street