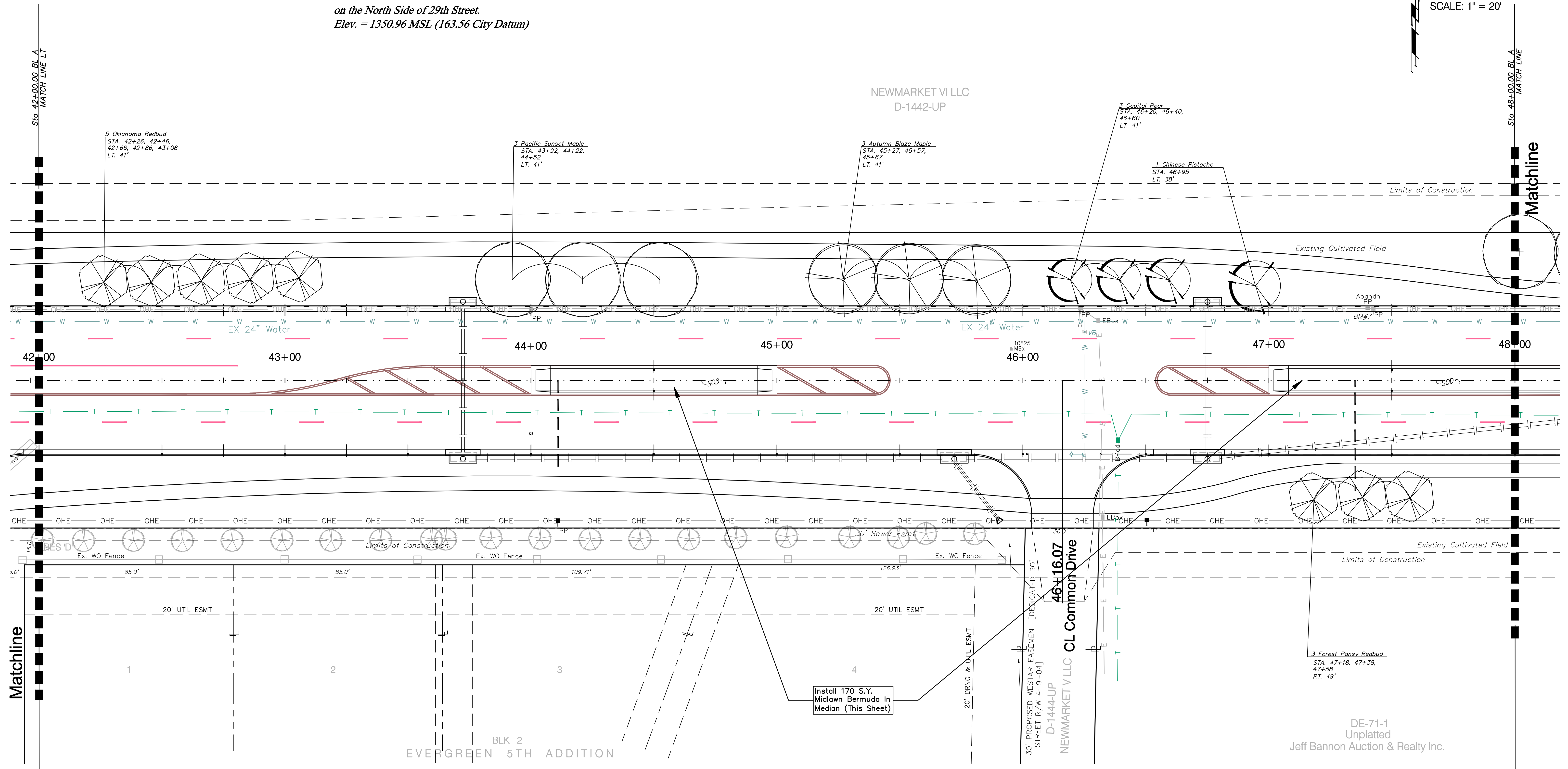
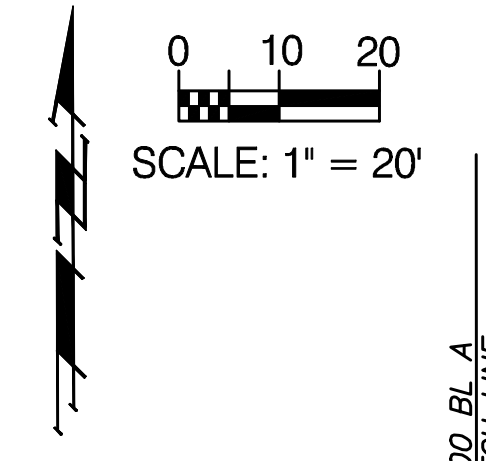


### BENCHMARKS

**BM#7 - Railroad Spike on South face of the Power Pole, Located next to the 1st Power Pole West of red brick house on the North Side of 29th Street.**  
 Elev. = 1350.96 MSL (163.56 City Datum)



#### PLANT SCHEDULE-This sheet only

| QTY                     | BOTANICAL NAME                                | COMMON NAME          | SIZE    | CONDITION | REMARKS          |
|-------------------------|---|----------------------|---------|-----------|------------------|
| <b>TREES</b>            |   |                      |         |           |                  |
| 3                       | <i>Acer fremanii</i> 'Autumn Blaze'           | Autumn Blaze Maple   | 2" Cal. | B&B       | Single Stem Only |
| 3                       | <i>Acer truncatum</i> x <i>A. platanoides</i> | Pacific Sunset Maple | 2" Cal. | B&B       | Single Stem Only |
| <b>ORNAMENTAL TREES</b> |   |                      |         |           |                  |
| 3                       | <i>Cercis canadensis</i> 'Forest Pansy'       | Forest Pansy Redbud  | 2" Cal. | B&B       | Single Stem Only |
| 5                       | <i>Cercis reniformis</i> 'Oklahoma'           | Oklahoma Redbud      | 2" Cal. | B&B       | Single Stem Only |
| 1                       | <i>Pistacia chinensis</i>                     | Chinese Pistache     | 2" Cal. | B&B       | Single Stem Only |
| 3                       | <i>Pyrus calleryana</i> 'Capital'             | Capital Pear         | 2" Cal. | B&B       | Single Stem Only |

Landscape Contractor to Install Hardwood Mulch at a Minimum Depth of 3"