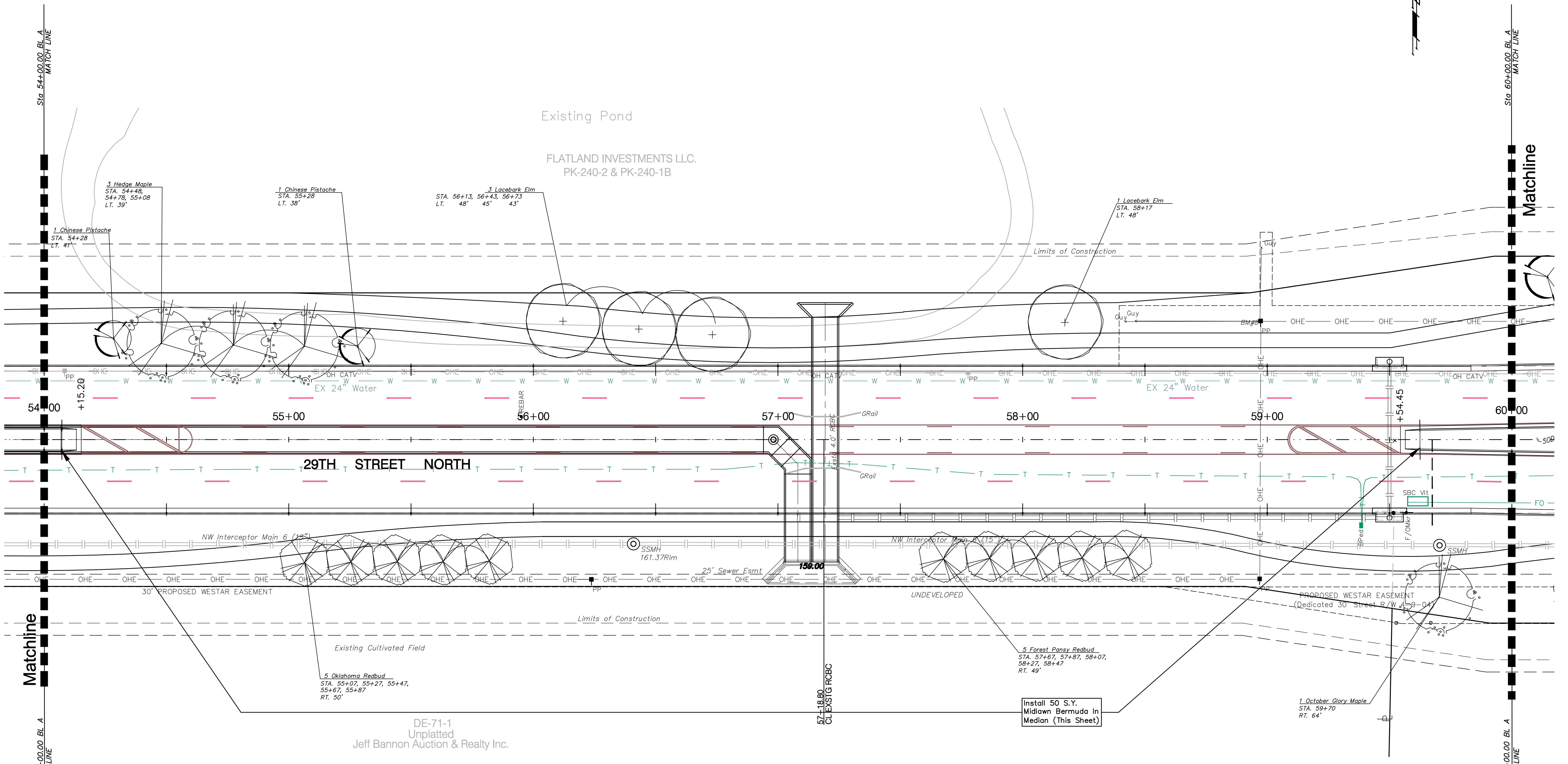
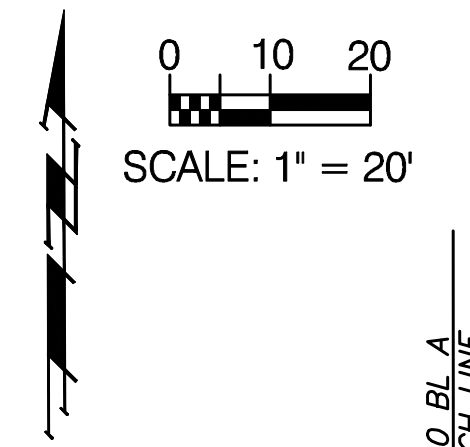


**BENCHMARKS**

BM#8 - Small Railroad Spike on South face of the Power Pole,  
 Located on the 3rd New Pole West of Maize Road on the  
 North Side of 29th Street.  
 Elev. = 1350.91 MSL (163.51 City Datum)

FRTWA REGION NO.	STATE	PROJECT NO.	FISCAL YEAR	SHEET NO.	TOTAL SHEETS
7	KANSAS	87N-0348-01	2007	104	135



**PLANT SCHEDULE-This sheet only**

QTY	BOTANICAL NAME	COMMON NAME	SIZE	CONDITION	REMARKS
<b>TREES</b>					
3	<i>Acer campestre</i>	Hedge Maple	2" Cal.	B&B	Single Stem Only
1	<i>Acer rubrum</i> 'October Glory'	October Glory Maple	2" Cal.	B&B	Single Stem Only
4	<i>Ulmus parvifolia</i>	Lacebark Elm	2" Cal.	B&B	Single Stem Only
<b>ORNAMENTAL TREES</b>					
5	<i>Cercis canadensis</i> 'Forest Pansy'	Forest Pansy Redbud	2" Cal.	B&B	Single Stem Only
5	<i>Cercis reniformis</i> 'Oklahoma'	Oklahoma Redbud	2" Cal.	B&B	Single Stem Only
2	<i>Pistacia chinensis</i>	Chinese Pistache	2" Cal.	B&B	Single Stem Only

Landscape Contractor to Install Hardwood Mulch at a Minimum Depth of 3"

Drawing File: F:\eng\29th (Maize-119th)\Landscape\29th Landscape.dwg

Project No. 03-06-6001 CAPITAL IMPROVEMENT PROJECT

Design: KTG

Drawn: KTG

Approved: BDT

Scale: 1" = 20'

29th Street Landscape Plan

Sta. 54+00 to Sta. 60+00

29th Street Expansion & Beautification - Maize Road to 119th Street

**Baughman Company, P.A.**  
 315 Ellis St. Wichita, KS 67211 P 316-262-7271 F 316-262-0149  
 ENGINEERING | SURVEYING | PLANNING | LANDSCAPE ARCHITECTURE

June 2007

SHEET

104

OF 135