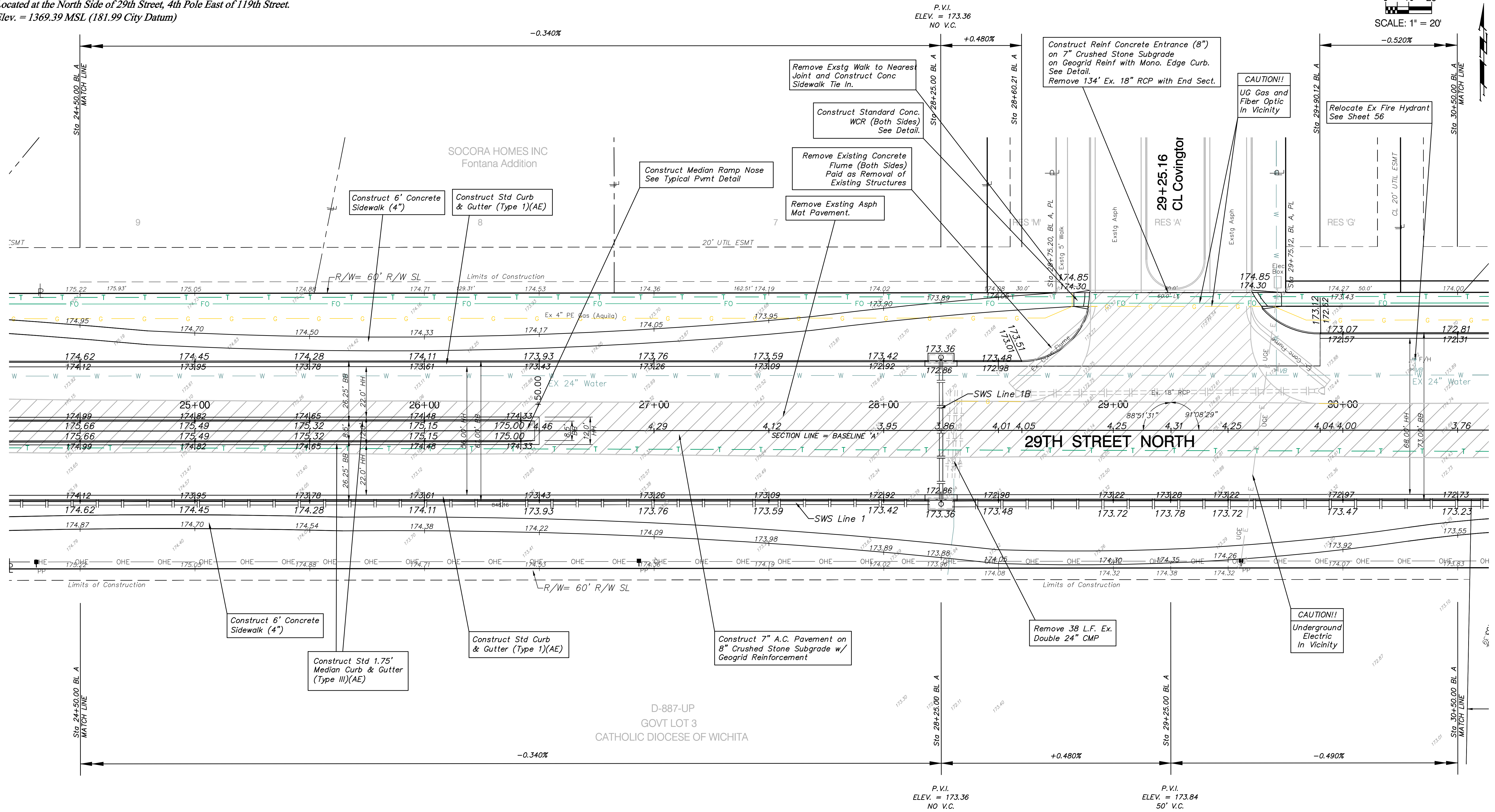
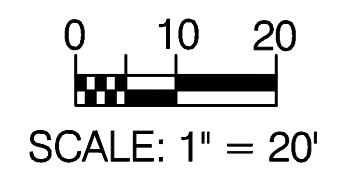


BENCHMARKS

BM#5 - Small Railroad Spike on South face of the Power Pole,
 Located at the North Side of 29th Street, 4th Pole East of 119th Street.
 Elev. = 1369.39 MSL (181.99 City Datum)

FIRMA REGION NO.	STATE	PROJECT NO.	FISCAL YEAR	SHEET NO.	TOTAL SHEETS
7	KANSAS	87N-0348-01	2007	11	135



Note:
 Trees/Shrubs to be removed are marked thus:

Note:
 Pavement, Sidewalks, and Etc. To Be Removed Are Indicated By:

Drawing File: F:\eng\29th (Maine-119th)\(Pav05)
 Design: AZIERE Project No. 0403-E828 CAPITAL IMPROVEMENT PROJECT
 Drawn: AZIERE 29th Street Paving Plan
 Approved: JFB Sta. 24+50 to Sta. 30+50
 Scale: NOTED 29th Street Paving Project - Main Road to 119th Street

Baughman Company, P.A.
 315 Ellis St. Wichita, KS 67211 P 316-262-7271 F 316-262-0149
 ENGINEERING | SURVEYING | PLANNING | LANDSCAPE ARCHITECTURE

May 2007
 SHEET 11 OF 135