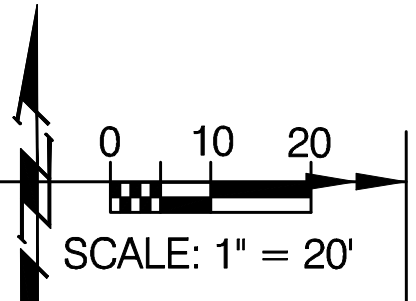
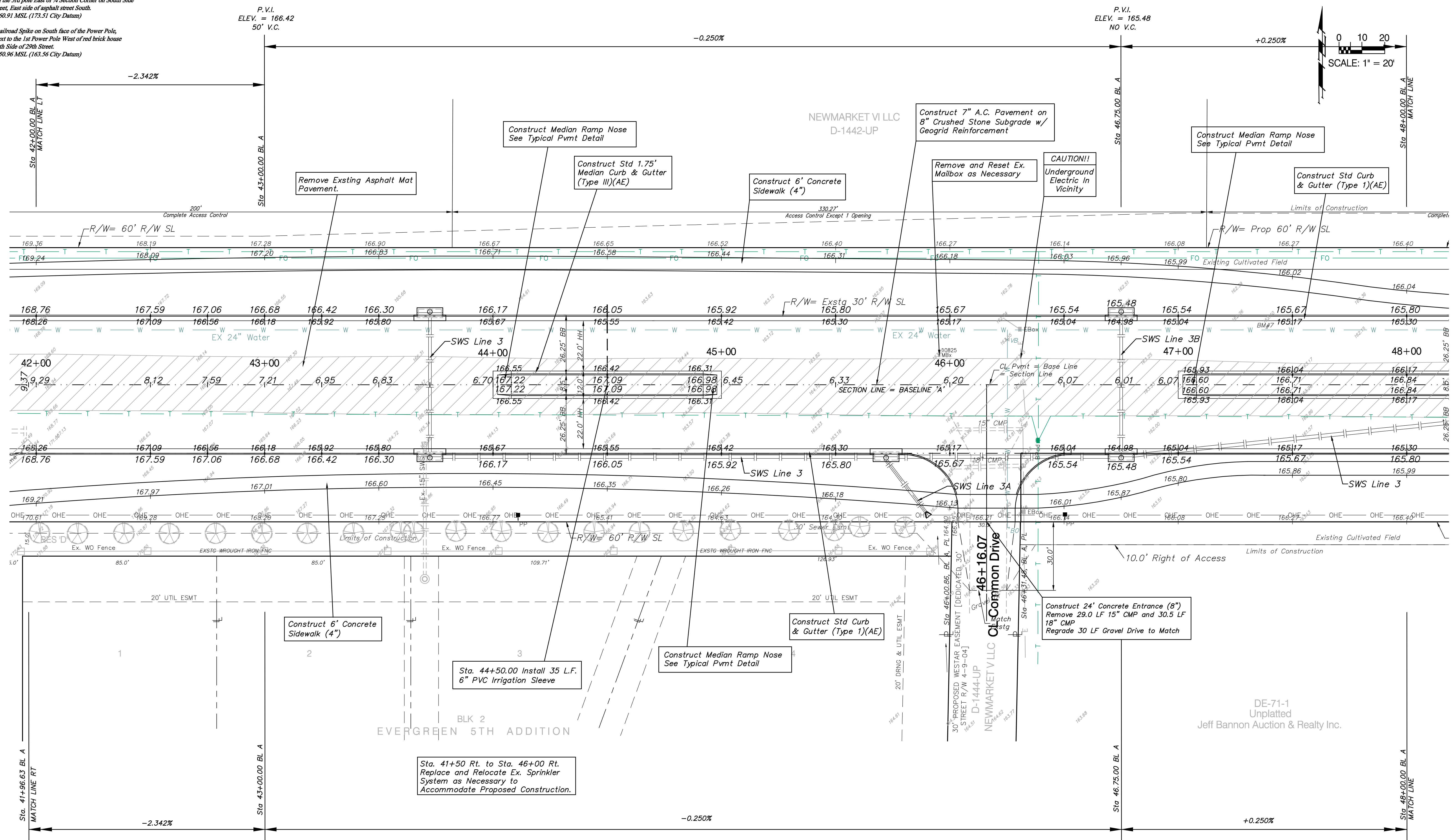


FRTWA REGION NO.	STATE	PROJECT NO.	FISCAL YEAR	SHEET NO.	TOTAL SHEETS
7	KANSAS	87N-0348-01	2007	14	135

**BENCHMARKS**

BM#6 - Small Railroad Spike on North face of the Power Pole,  
Located on the 3rd pole East of 1/4 Section Corner on South Side  
of 29th Street, East side of asphalt street South.  
Elev. = 1360.91 MSL (173.51 City Datum)

BM#7 - Railroad Spike on South face of the Power Pole,  
Located next to the 1st Power Pole West of red brick house  
on the North Side of 29th Street.  
Elev. = 1350.96 MSL (163.56 City Datum)



**Note:**  
Trees/Shrubs to be removed are marked thus:

**Note:**  
Pavement, Sidewalks, and Etc. To Be Removed Are Indicated By:

Drawing File: F:\eng\29th (Maine-119th)\(Pav08)  
Design: AZIERE  
Drawn: SONNY  
Approved: JFB  
Scale: NOTED

Project No. 0403-E828  
**29th Street Paving Plan**  
Sta. 42+00 to Sta. 48+00  
29th Street Paving Project - Main Road to 119th Street

**Baughman Company, P.A.**  
315 Ellis St. Wichita, KS 67211 P 316-262-7271 F 316-262-0149  
ENGINEERING | SURVEYING | PLANNING | LANDSCAPE ARCHITECTURE

May, 2007  
SHEET 14 OF 135