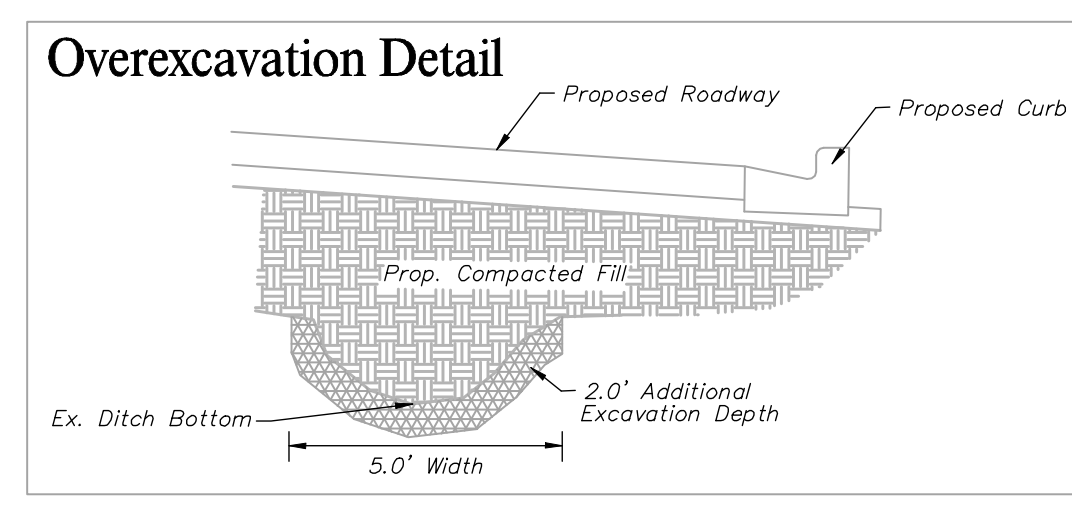
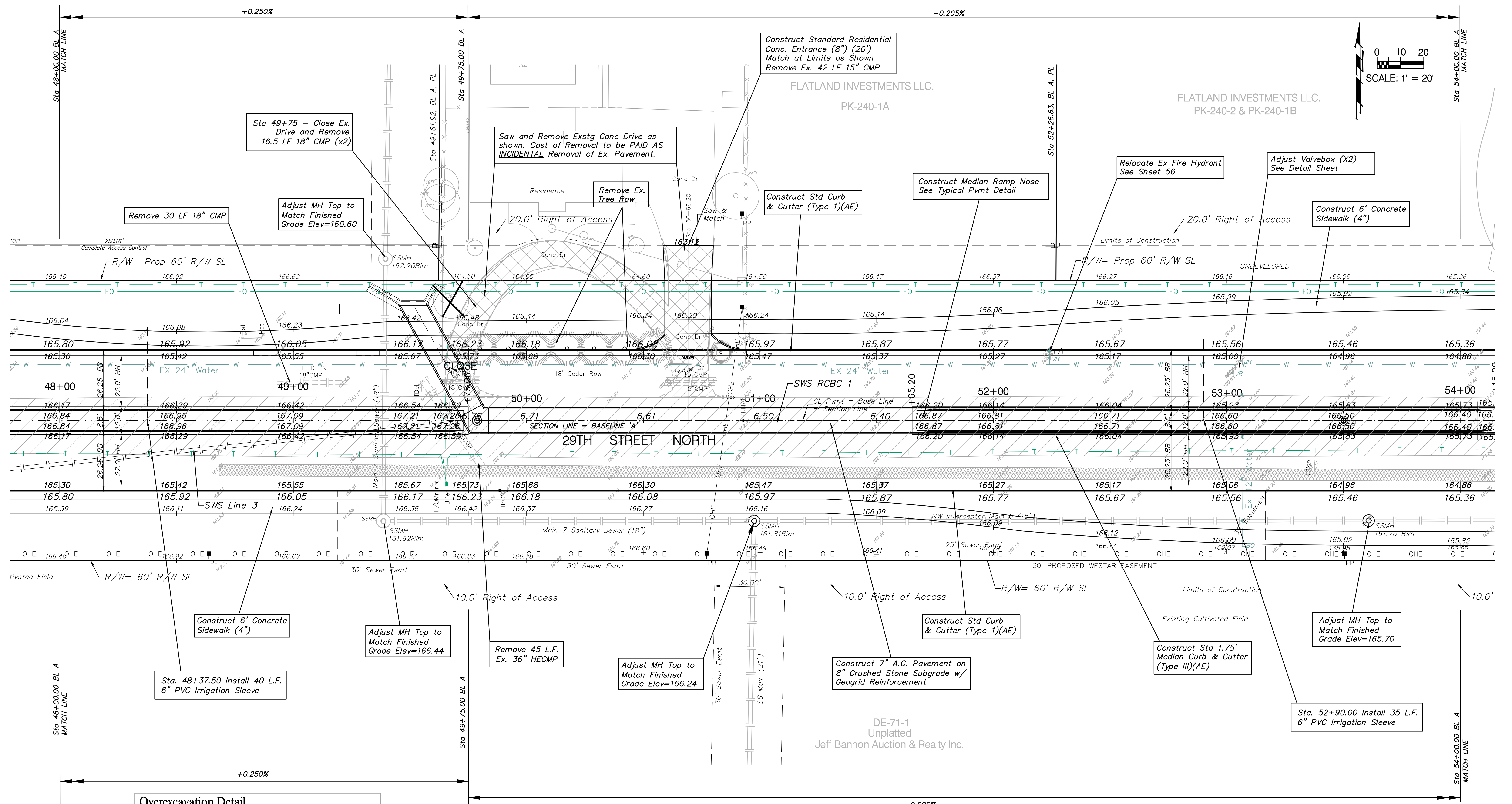
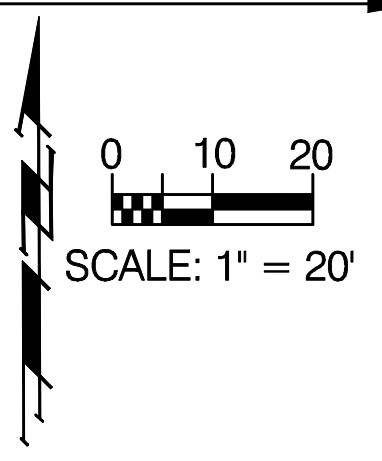


BENCHMARKS

BM#7 - Railroad Spike on South face of the Power Pole,
 Located next to the 1st Power Pole West of red brick house
 on the North Side of 29th Street.
 Elev. = 1350.96 MSL (163.56 City Datum)

FRWA REGION NO.	STATE	PROJECT NO.	FISCAL YEAR	SHEET NO.	TOTAL SHEETS
7	KANSAS	87N-0348-01	2007	15	135

P.V.I.
 ELEV. = 166.23
 NO V.C.



P.V.I.
 ELEV. = 166.23
 NO V.C.

Note:
 Areas of Overexcavation are indicated by:
 See Detail This Sheet Paid as Common Excavation

Note:
 Trees/Shrubs to be removed are marked thus:

Note:
 Pavement, Sidewalks, and Etc. To Be Removed Are Indicated By:

Drawing File: F:\eng\29th (Maine-119th)\Pav09
 Design: AZIERE
 Drawn: SONNY
 Approved: JFB
 Scale: NOTED

Project No. 0403-E828 CAPITAL IMPROVEMENT PROJECT
 29th Street Paving Plan
 Sta. 48+00 to Sta. 54+00
 29th Street Paving Project - Main Road to 119th Street