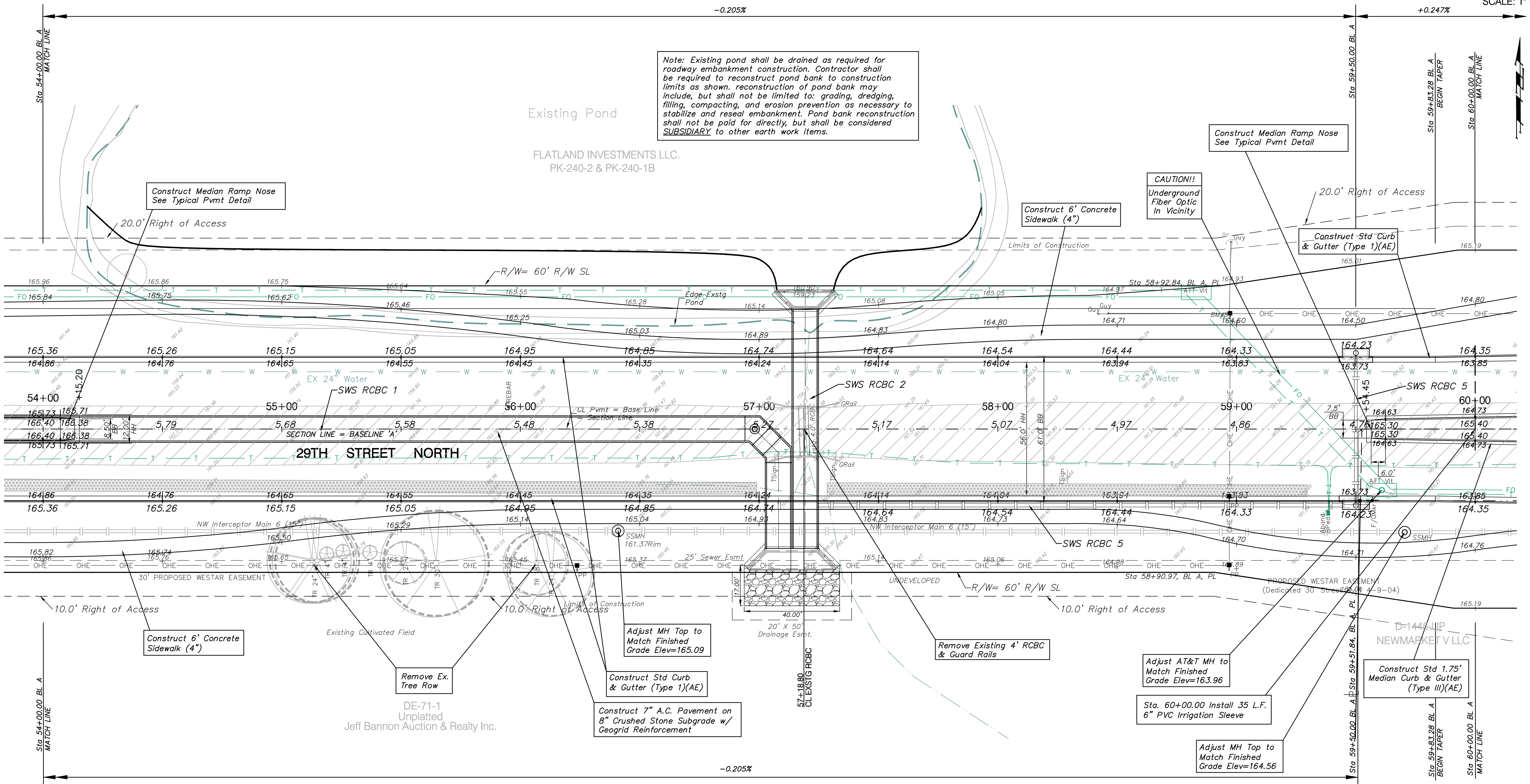
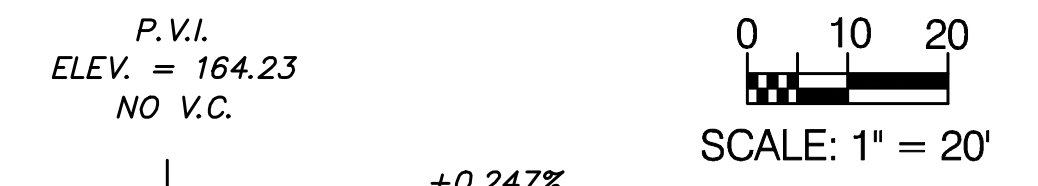


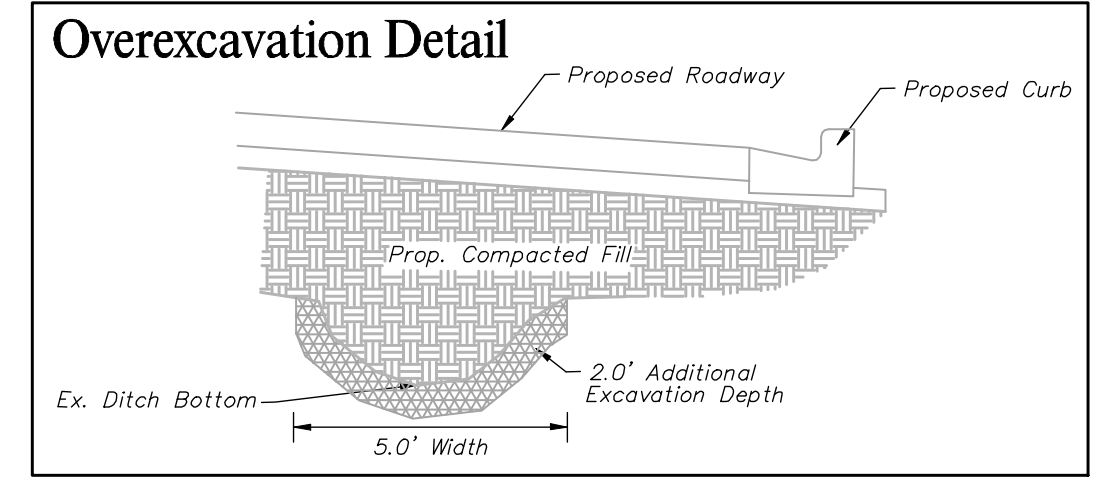
BENCHMARKS
 BM#8 - Small Railroad Spike on South face of the Power Pole,
 Located on the 3rd New Pole West of Maize Road on the
 North Side of 29th Street.
 Elev. = 1350.91 MSL (163.51 City Datum)

PRWA REGION NO.	STATE	PROJECT NO.	FISCAL YEAR	SHEET NO.	TOTAL SHEETS
7	KANSAS	87N-0348-01	2007	16	135



Note: Existing pond shall be drained as required for roadway embankment construction. Contractor shall be required to reconstruct pond bank to construction limits as shown. reconstruction of pond bank may include, but shall not be limited to: grading, dredging, filling, compacting, and erosion prevention as necessary to stabilize and reseal embankment. Pond bank reconstruction shall not be paid for directly, but shall be considered **SUBSIDIARY** to other earth work items.

CAUTION!!
 Underground Fiber Optic In Vicinity



Note:
 Areas of Overexcavation are Indicated by:
 See Detail This Sheet
 Paid as Common Excavation

Note:
 Trees/Shrubs to be removed are marked thus:

Note:
 Pavement, Sidewalks, and Etc. To Be Removed Are Indicated By:

Drawing File: F:\eng\29th (Maine-119th)\(Pav10)
 Design: AZIERE
 Drawn: SONNY
 Approved: JFB
 Scale: NOTED

CAPITAL IMPROVEMENT PROJECT
29th Street Paving Plan
 Sta. 54+00 to Sta. 60+00
 29th Street Paving Project - Maize Road to 119th Street

Baughman Company, P.A.
 315 Ellis St. Wichita, KS 67211 P 316-262-7271 F 316-262-0149
 ENGINEERING | SURVEYING | PLANNING | LANDSCAPE ARCHITECTURE