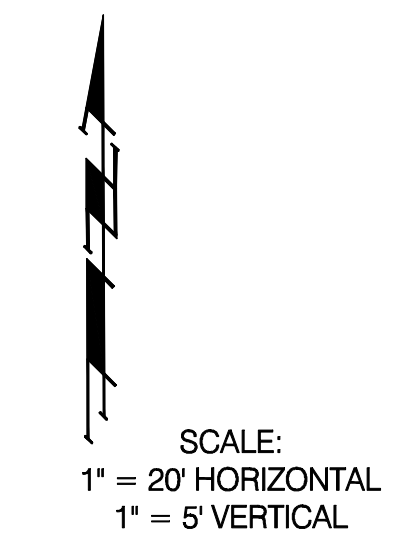


PRWA REGION NO.	STATE	PROJECT NO.	FISCAL YEAR	SHEET NO.	TOTAL SHEETS
7	KANSAS	87N-0348-01	2007	34	135



Sta 0+00.00 Line 3 =
PSta 43+46.75 SL, 31.50' Lt
Construct Std Type 1 Dbl Inlet
(4'4" X 11'4") Elev = 166.23Top
BEGIN CONSTRUCTION Line 3

CAUTION!!
Underground
Water
Crossing

Sta 0+00.00 Line 3B =
PSta 46+75.00 SL, 31.50' Lt
Construct Std Type 1 Dbl Inlet
(4'4" X 11'4") Elev = 165.48Top
BEGIN CONSTRUCTION Line 3B

CAUTION!!
Underground
Water
Crossing

Sta 0+63.03 P.I. Line 3 =
PSta 43+46.75 SL, 31.50' Rt
Construct Std Type 1 Dbl Inlet
(4'4" X 11'4") Elev = 166.23Top

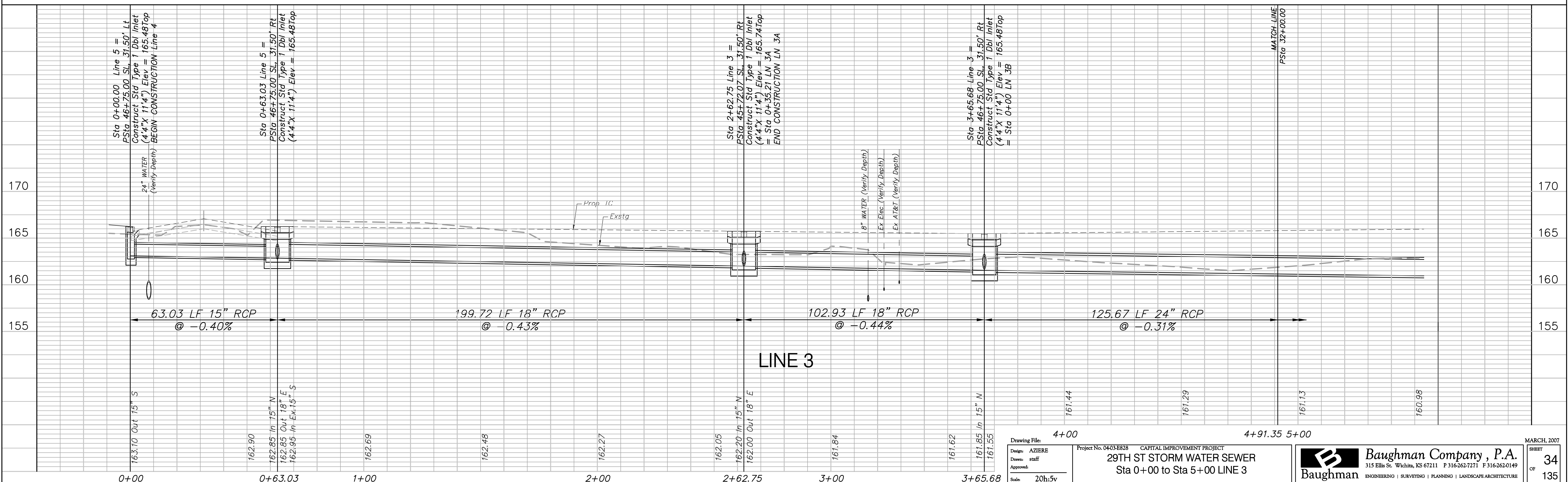
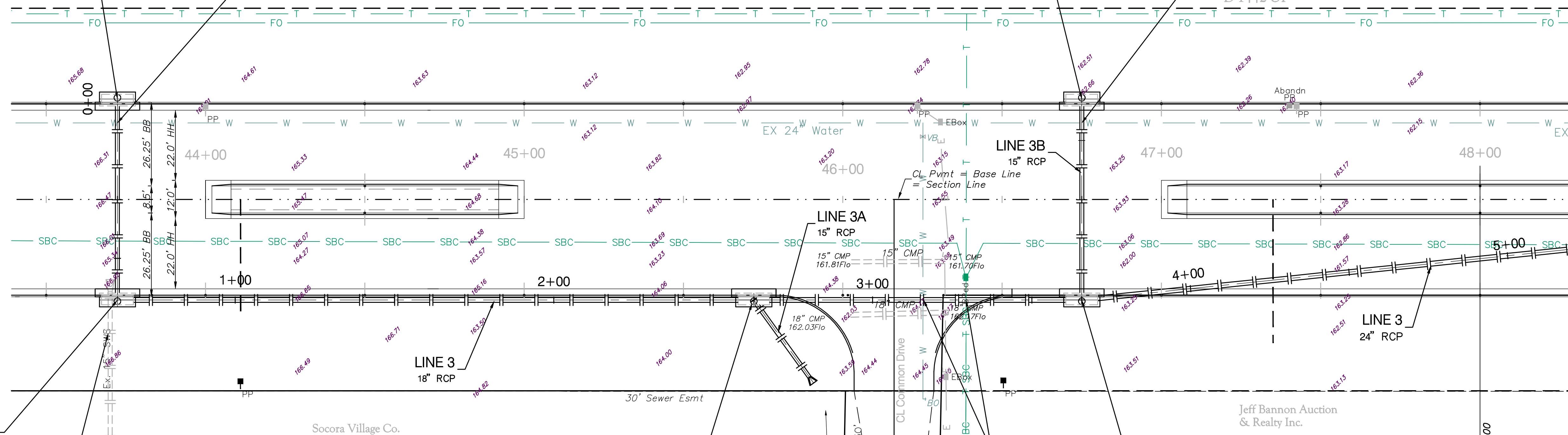
Remove Ex. 15" RCP (N) and
Lower using a "Broken Back"
Concrete Collar. Replace RCP
to Proposed Inlet.
Elev = 162.95 FL

Sta 2+62.75 Line 3 =
PSta 45+72.07 SL, 31.50' Rt
Construct Std Type 1 Dbl Inlet
(4'4" X 11'4") Elev = 165.74Top
= Sta 0+35.21 LN 3A
END CONSTRUCTION LN 3A

CAUTION!!
Underground
Electric,
Water, & ATT
Crossing

Sta 3+65.68 Line 3 =
PSta 46+75.00 SL, 31.50' Rt
Construct Std Type 1 Dbl Inlet
(4'4" X 11'4") Elev = 165.48Top
= Sta 0+63.03 LN 3B

NOTE: Contractor to use caution during excavation on this Project. Multiple Underground Utilities parallel and cross New Construction. Underground Utilities are shown located according to the best information available at the time of drawing. Contractor to FIELD VERIFY exact locations and depths PRIOR TO Construction on this Project.



Drawing File:	4+00	4+91.35 5+00
Design:	AZIERE	Project No. 0403-E828 CAPITAL IMPROVEMENT PROJECT
Drawn:	staff	29TH ST STORM WATER SEWER
Approved:		Sta 0+00 to Sta 5+00 LINE 3
Scale:	20h:5v	

Baughman Company, P.A.
315 Ellis St. Wichita, KS 67211 P 316-262-7271 F 316-262-0149
ENGINEERING | SURVEYING | PLANNING | LANDSCAPE ARCHITECTURE

MARCH, 2007
SHEET
OF
34
135