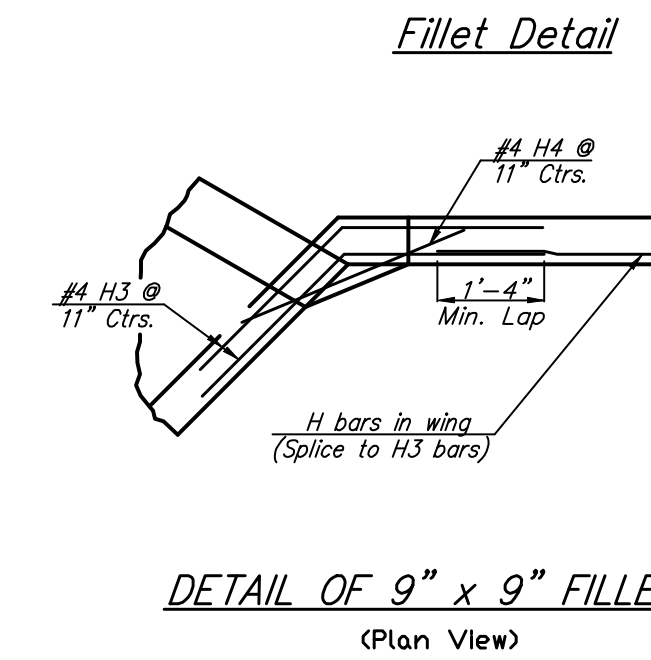
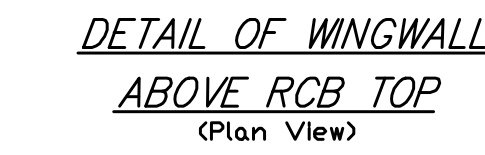
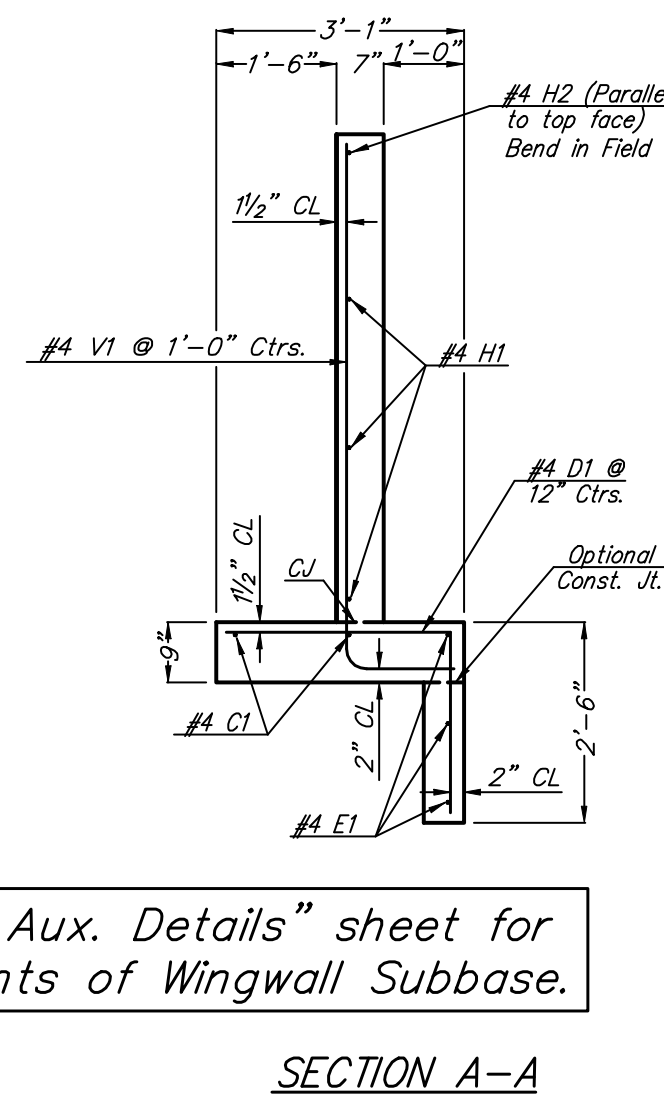


See "RCB Aux. Details" sheet for requirements of Wingwall Subbase.



NOTE: Const. Jt. may be used as Contractor's option when approved by the Engineer. D1 bars or mesh may be spliced thus: Minimum overlap shall be 1'-3". No increase in quantities or cost shall be allowed when Contractor elects this option.

GENERAL NOTES

UNIT STRESSES: Grade 4.0 Concrete; $f'_c = 4,000$ p.s.i.
Reinforcing Steel; $f_y = 60,000$ p.s.i.

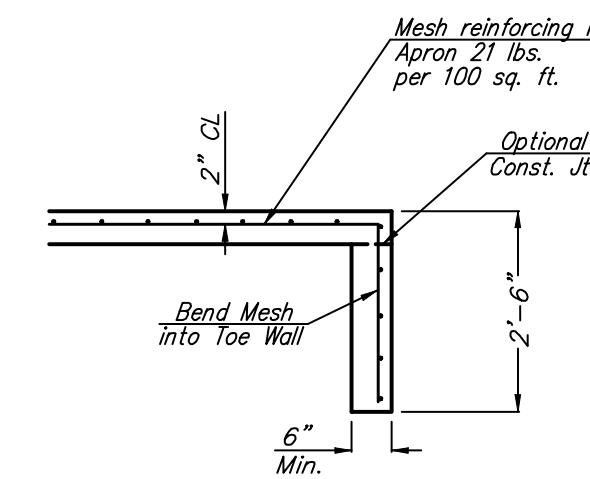
CONCRETE: Grade 4.0 Concrete shall be used throughout. Bevel all exposed edges with a 1/2 inch triangular moulding.

REINFORCING: All reinforcing shall conform to ASTM A615, Grade 60. Welded wire fabric shall conform to ASTM A185. Wire fabric shall be electrically welded and shall be composed of 6x6-WI.4xWI.4 welded wire fabric and shall be classified as pounds of reinforcing.

QUANTITIES: Wingwall Quantities include all quantities outside the neat lines of the box, excluding the hubguard.

FOUNDATION AND BACKFILL MATERIAL: Soils judged as high plasticity clays, fat clays, expansive clays, or organic clays are unsuitable for foundation and/or backfill material for wingwalls and will not be used. Where these conditions exist, Foundation Stabilization and/or Granular Backfill (Wingwalls) shall be used as determined by the Engineer. See "RCB Auxiliary Details" sheet for additional details.

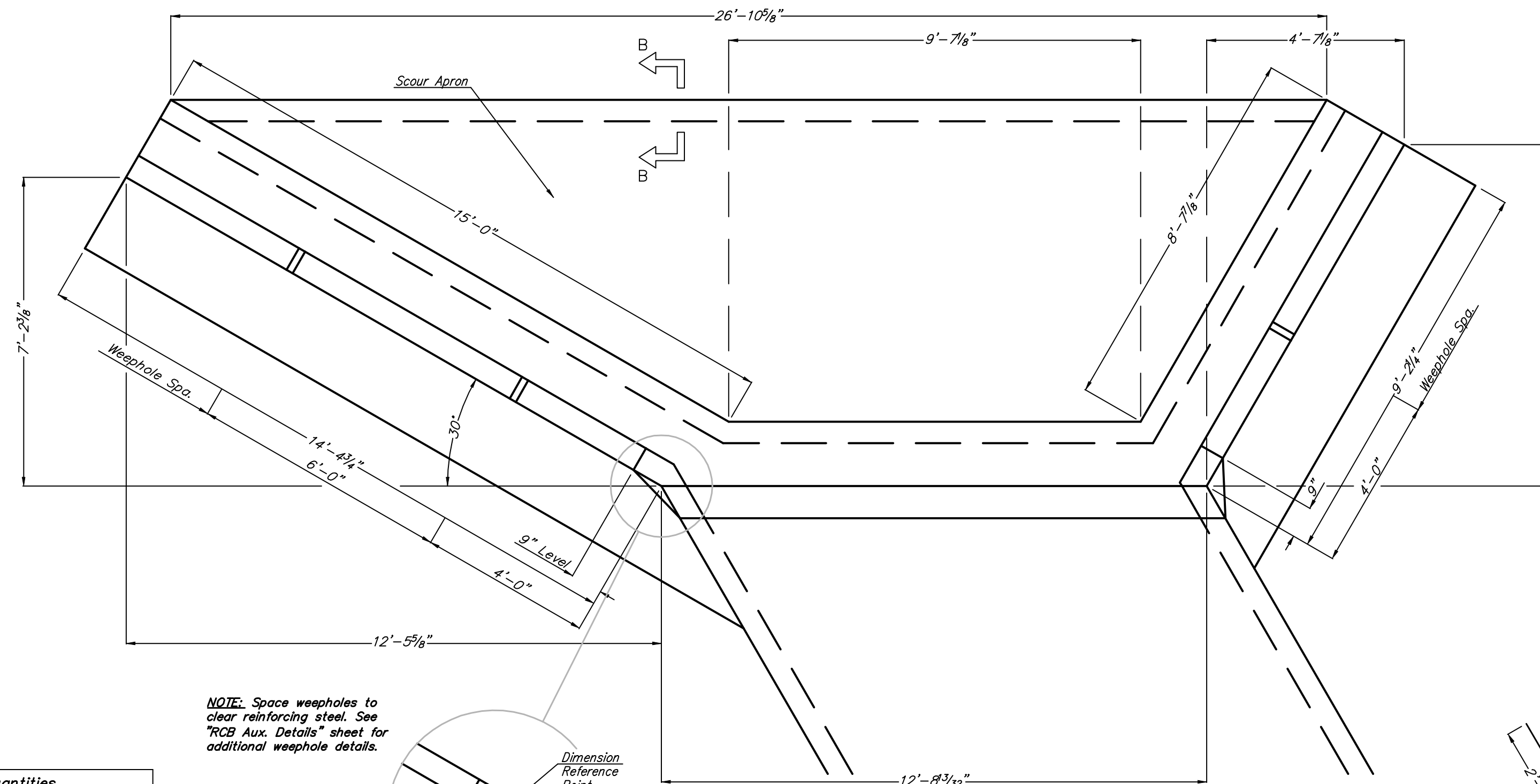
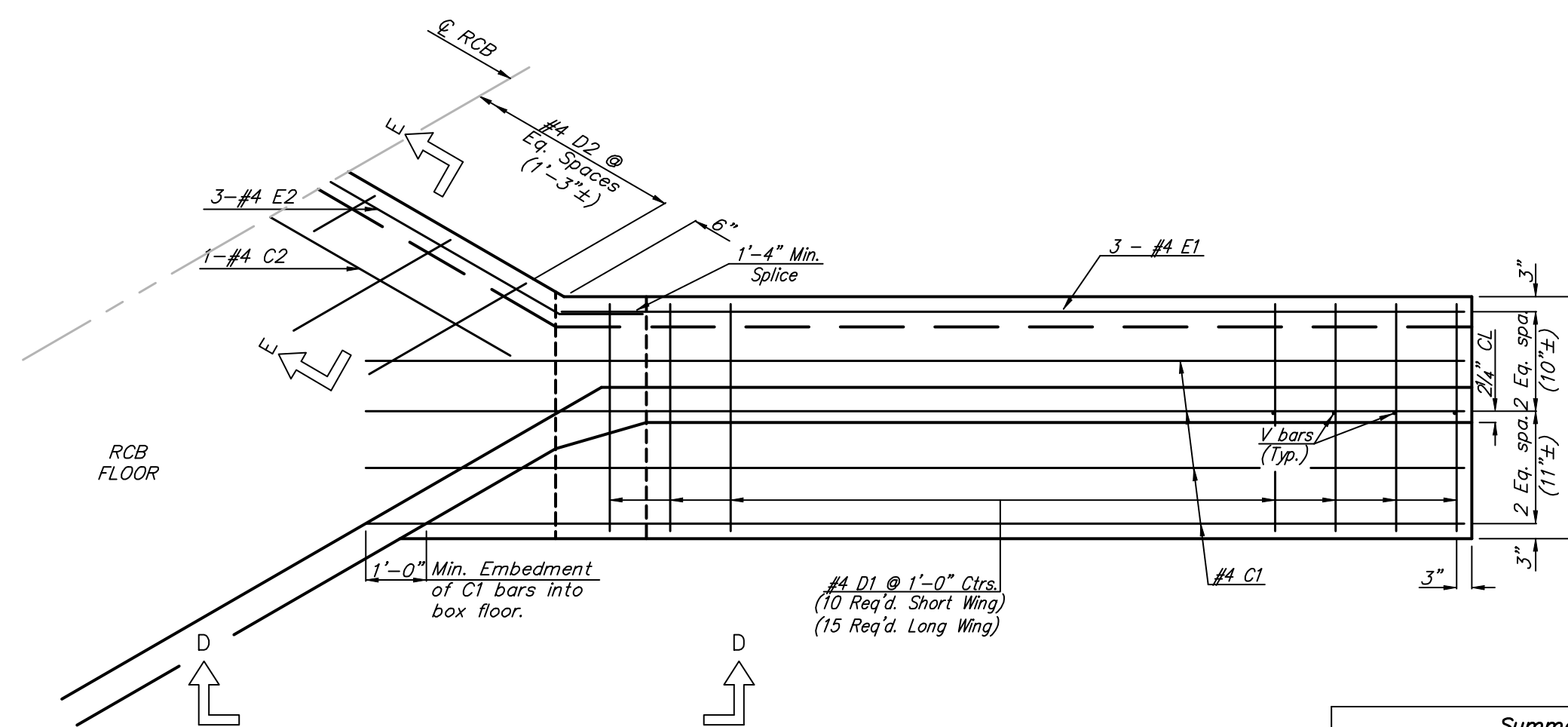
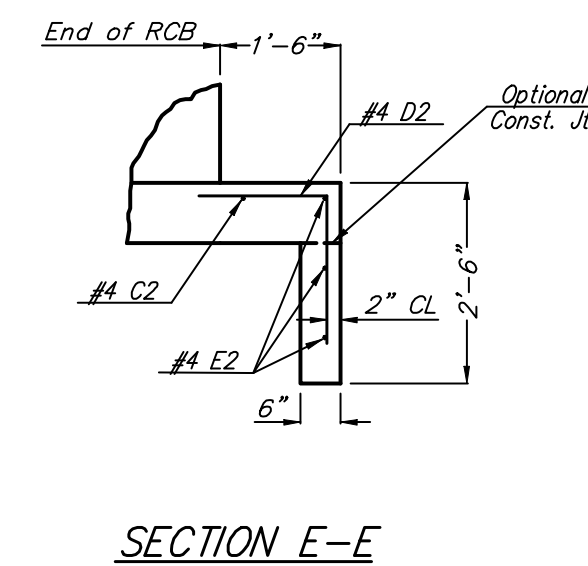
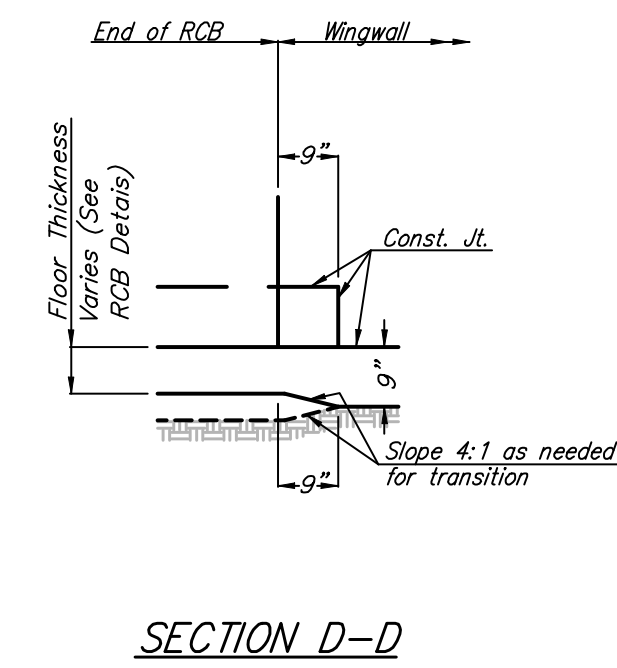
NOTE:
EF = Each Face
NS = Near Side
FS = Far Side
CJ = Const. Joint



Bar	Incrmts.
V1S	3 3/4"
V1L	2 1/2"

Var. 5'-0" to 7'-10" by equal increments (See Table)

V1S, V1L



NOTE: Space weepholes to clear reinforcing steel. See "RCB Aux. Details" sheet for additional weephole details.

Summary of Quantities	
Concrete (Grade 4.0)	
Wingwalls	7.3 C.Y.
Apron	3.14 C.Y.
Soil Saver	0.0 C.Y.
Reinforcing Steel	625 Lbs
Welded Wire Fabric	38 Lbs

* See Bending Diagram

Bar Schedule

Mark	#4 C1S	#4 C1L	#4 D1	#4 E1S	#4 E1L	#4 C2	#4 D2	#4 E2	#4 V1S	#4 V1L	#4 H1S	#4 H1L	#4 H2S	#4 H2L	#4 H3S	#4 H3L	#4 H4S	#4 H4L	#4 H5S	#4 H5L
Number	4	4	25	3	3	1	8	3	10	15	5	5	1	1	9	9	5	5	3	3
Length	11'-0"	18'-2"	5'-10"	8'-5"	14'-11"	12'-5"	5'-2"	12'-6"	*	*	8'-0"	13'-3"	10'-0"	15'-2"	5'-0"	5'-0"	2'-6"	3'-6"	*	*

NOTE: Reinforcing Bar List is for both wings at one end of box only.

Drawing File: E:\eng\29th (Maize-119th)\Detail\Wingwall 4.dwg

Design: KK Project No. 0403-E828 CAPITAL IMPROVEMENT PROJECT

Drawn: JEB

Approved: JFB

Scale: 1"=30'

FLARED WINGWALLS Sta. 49+49.53 Lt.

4 ft Rise (30° Skew)

29th Street Sewing Project - Main Road to 119th Street

Baughman Company, P.A.
315 Ellis St. Wichita, KS 67211 P 316-262-7271 F 316-262-0149
ENGINEERING | SURVEYING | PLANNING | LANDSCAPE ARCHITECTURE

MAY, 2007

SHEET

45c

OF 135