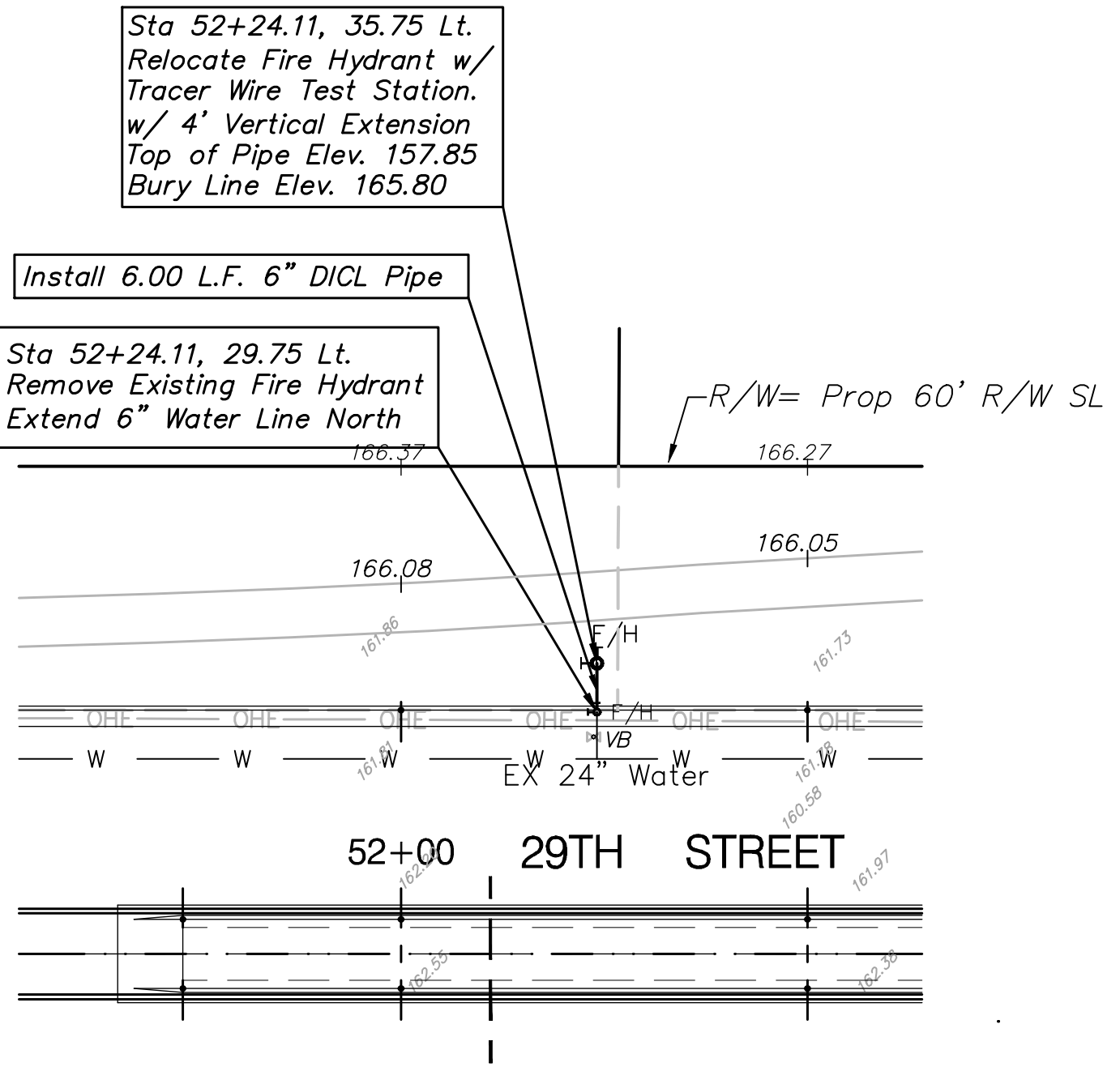
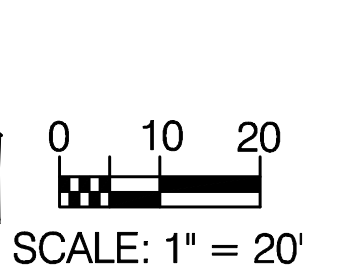
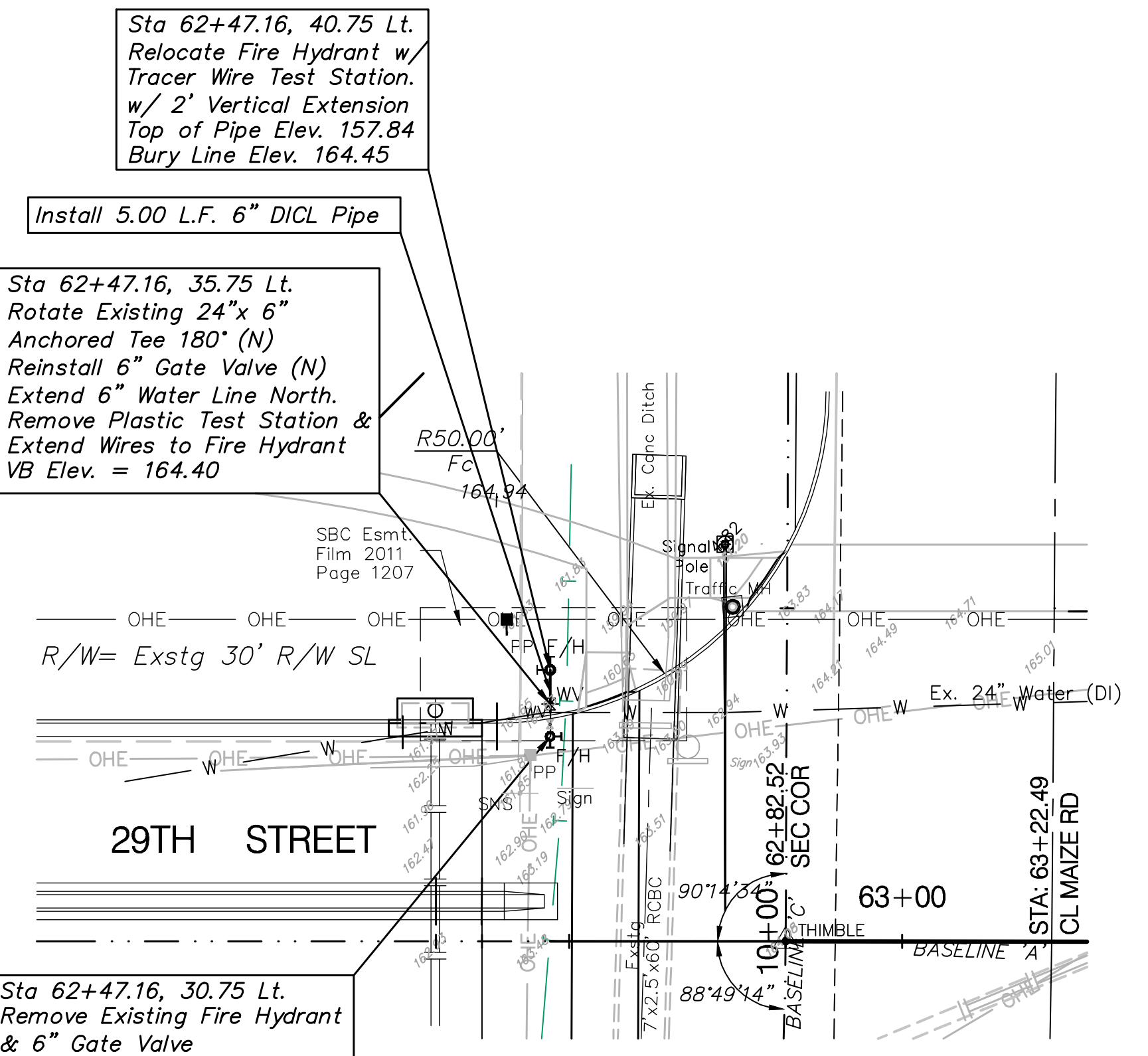


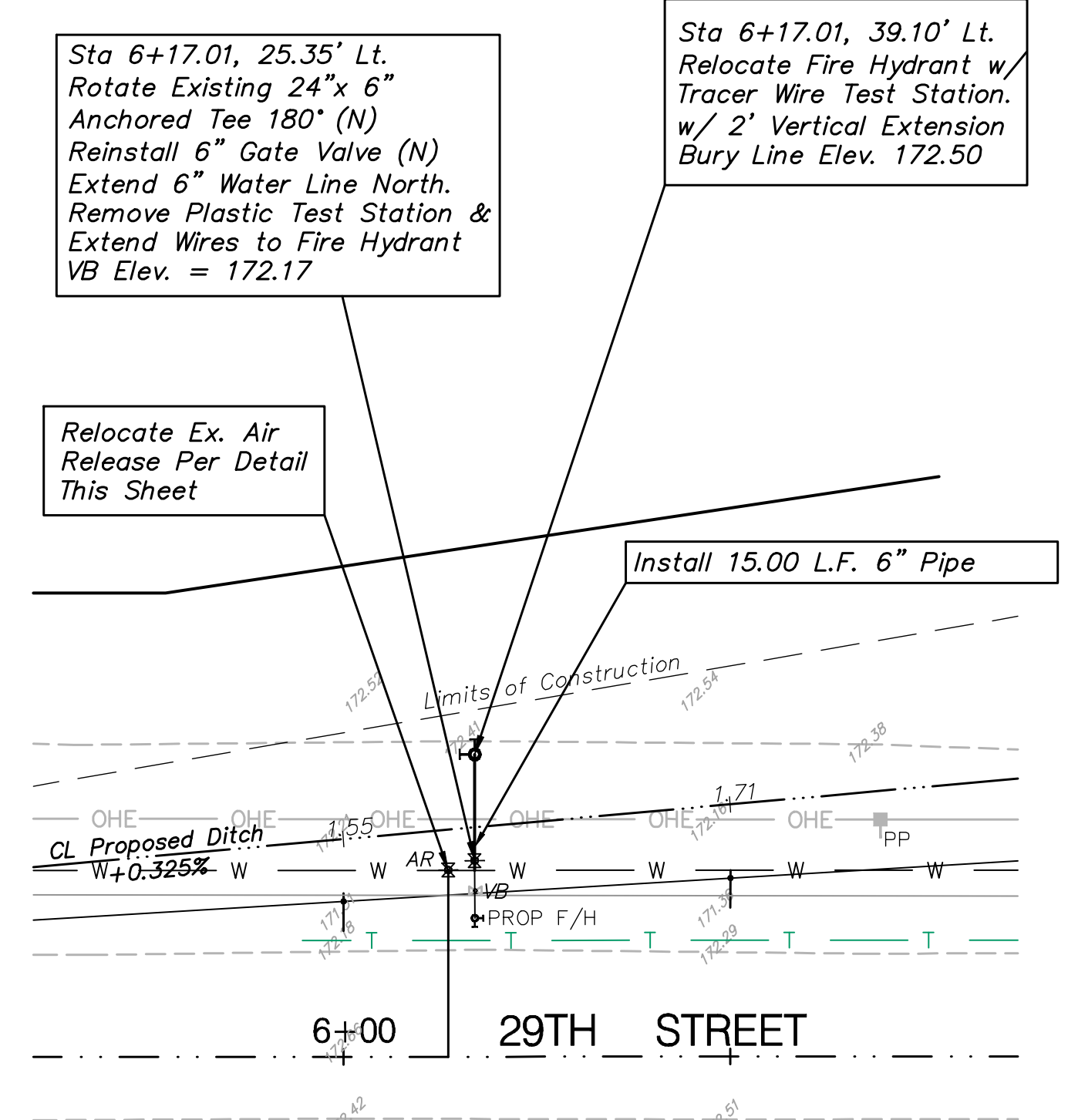
RTWA REGION NO.	STATE	PROJECT NO.	FISCAL YEAR	SHEET NO.	TOTAL SHEETS
7	KANSAS	87N-0348-01	2007	56	135



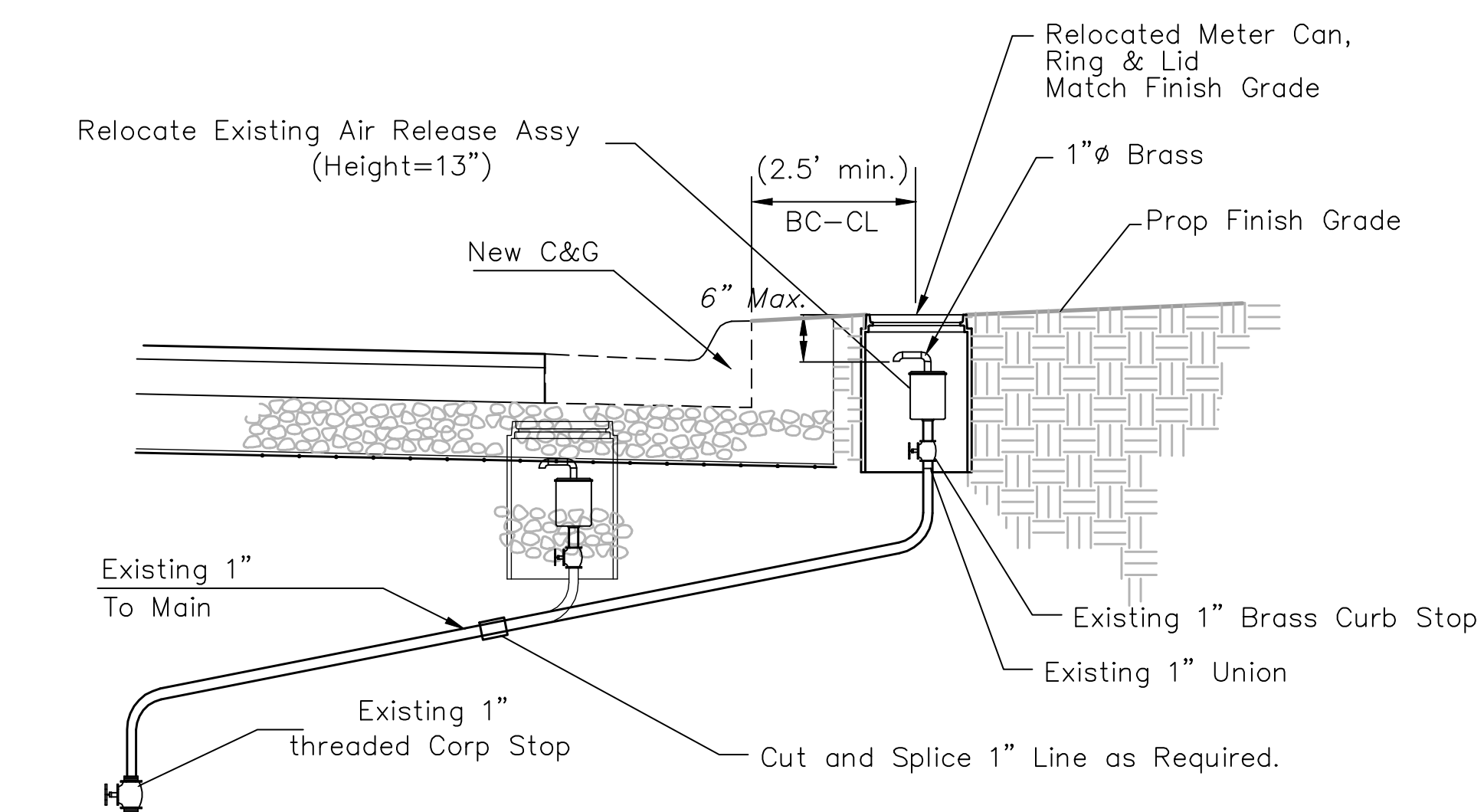
**LOCATION 5**



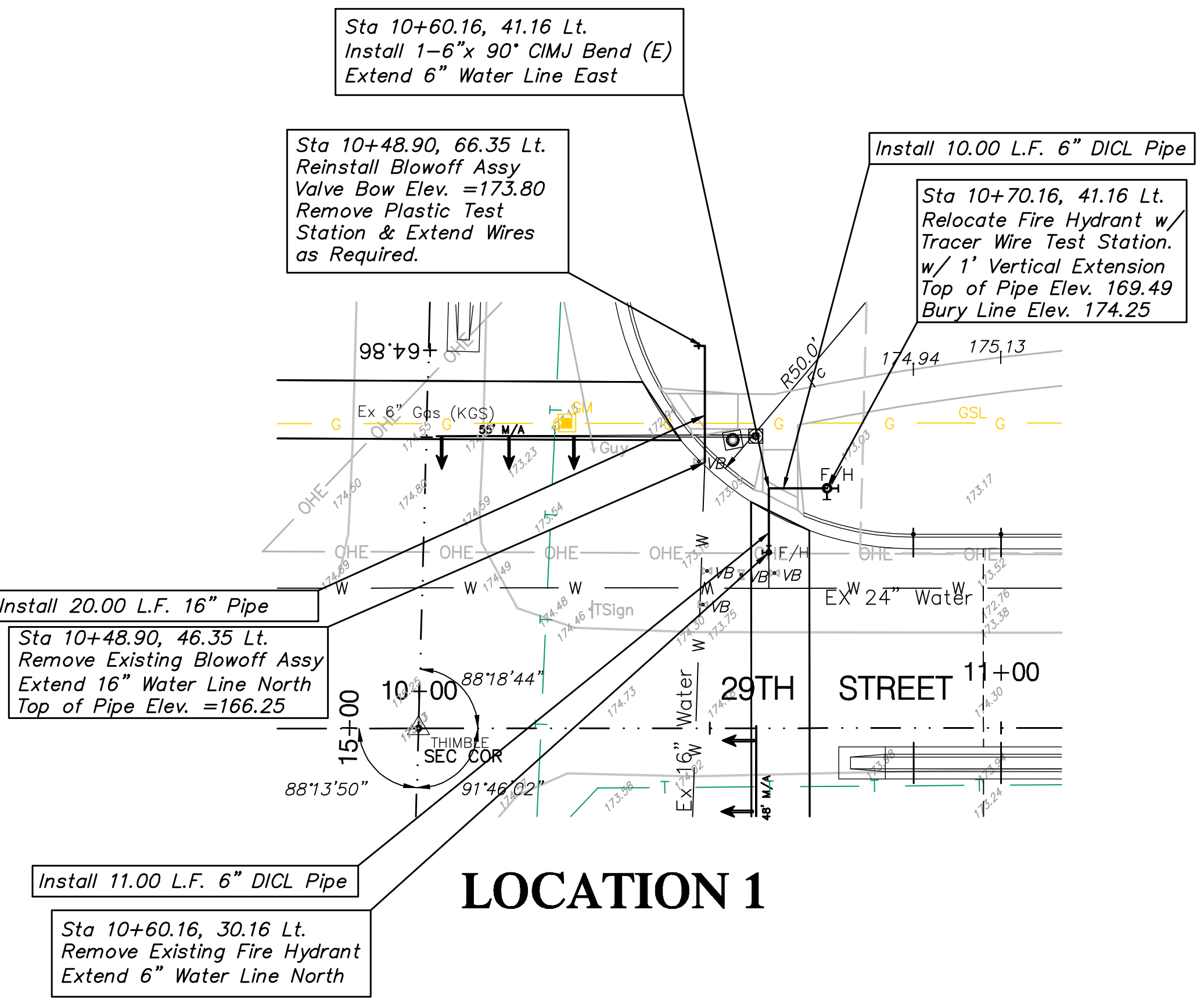
**LOCATION 6**



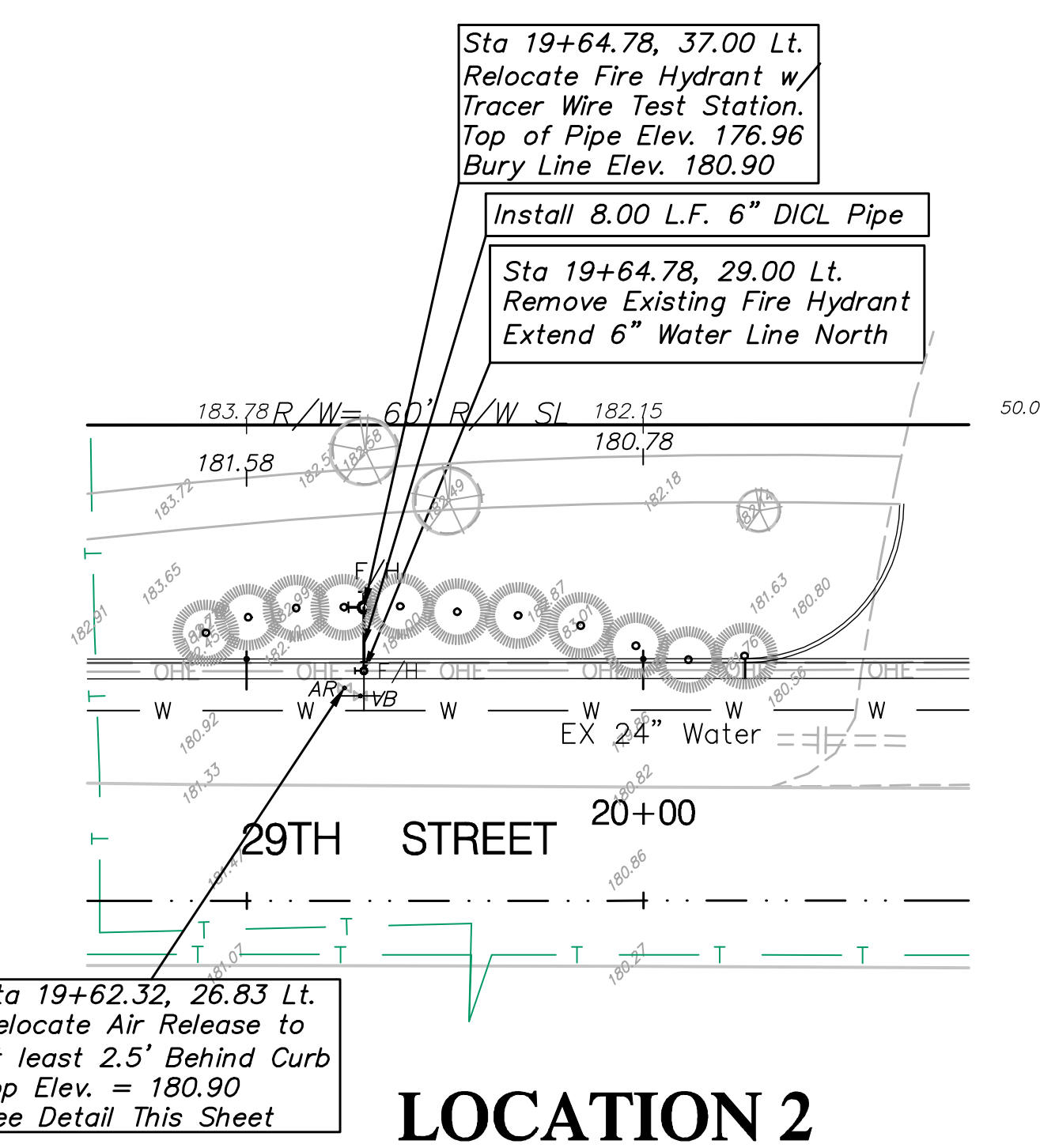
**LOCATION 7**



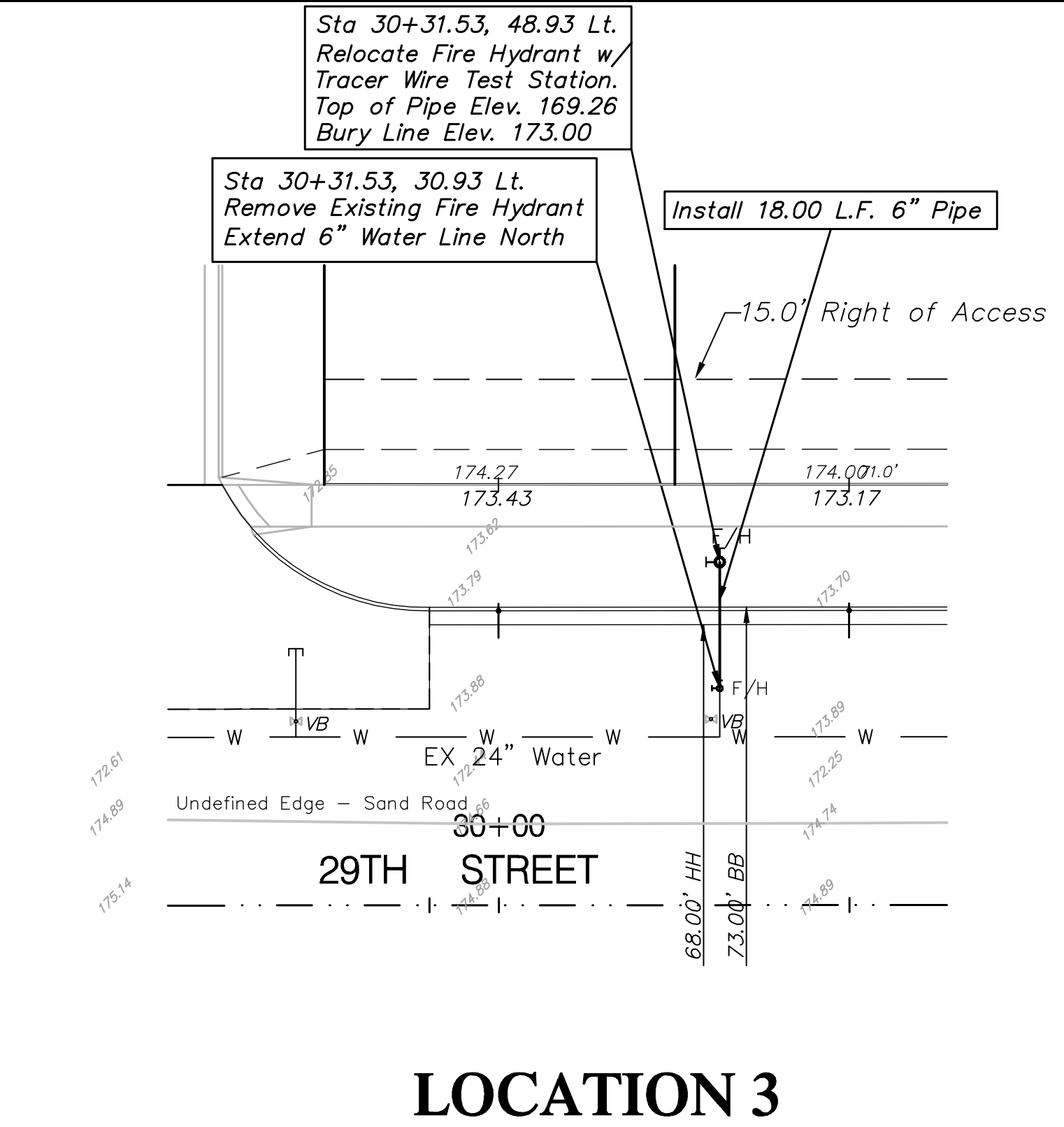
**AIR RELEASE RELOCATION**



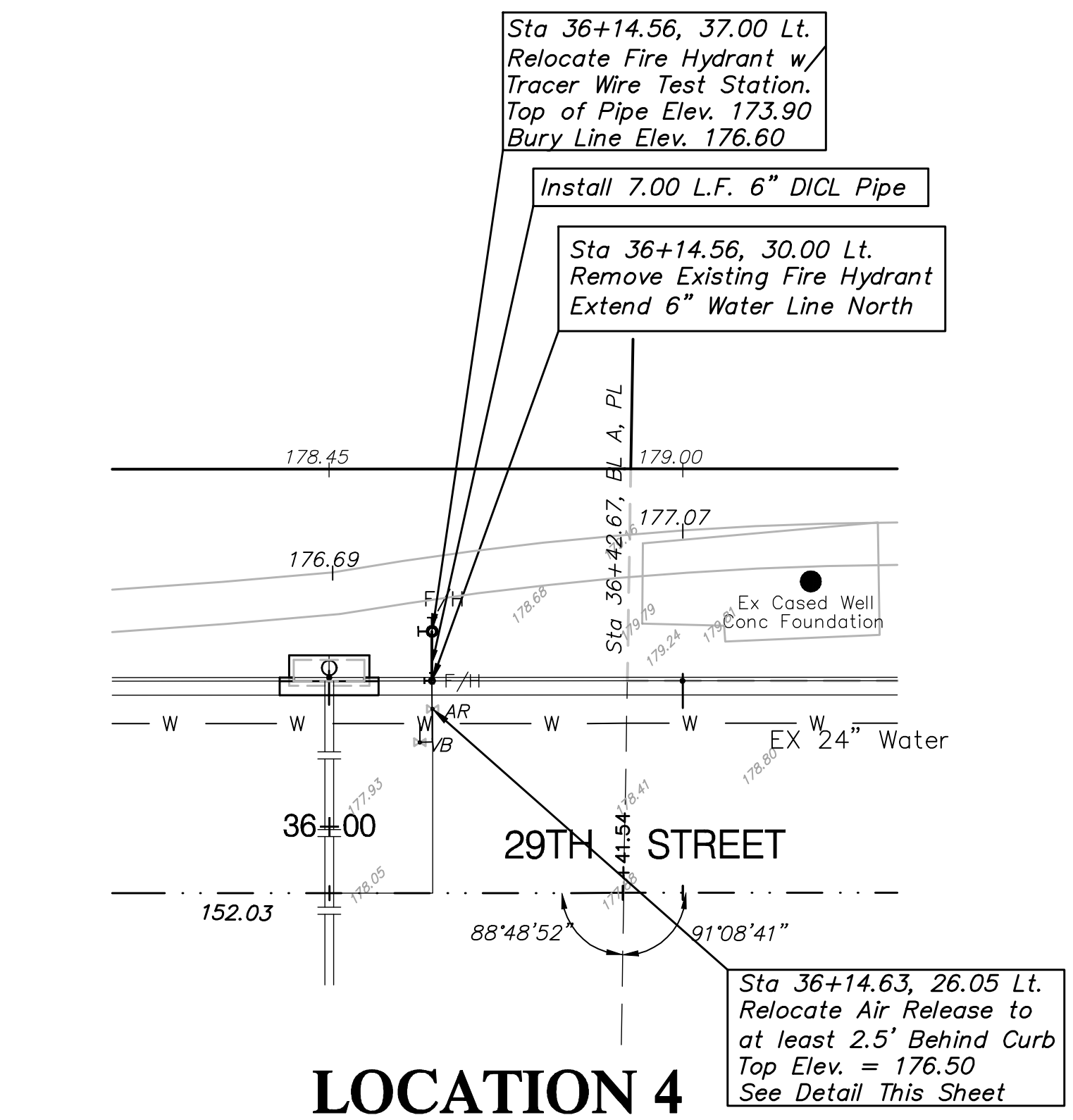
**LOCATION 1**



**LOCATION 2**



**LOCATION 3**



**LOCATION 4**

NOTE: Contractor to Verify Existing Pipe Depth and New Pipe Lengths Required.

Tracer Wire Test Station Shall be tested for Continuity after Relocation by the Contractor.

Drawing File: E:\eng\29th (Maine-119th)\Land\29th base.dwg\Wtr ReLoc  
 Project No. 0403-E828 CAPITAL IMPROVEMENT PROJECT  
 Design: KK  
 Drawn: TCA  
 Approved: JFB  
 Scale: NOTED

**29th Street Water Relocation Plan**

**Baughman Company, P.A.**  
 315 Ellis St. Wichita, KS 67211 P 316-262-7271 F 316-262-0149  
 ENGINEERING | SURVEYING | PLANNING | LANDSCAPE ARCHITECTURE