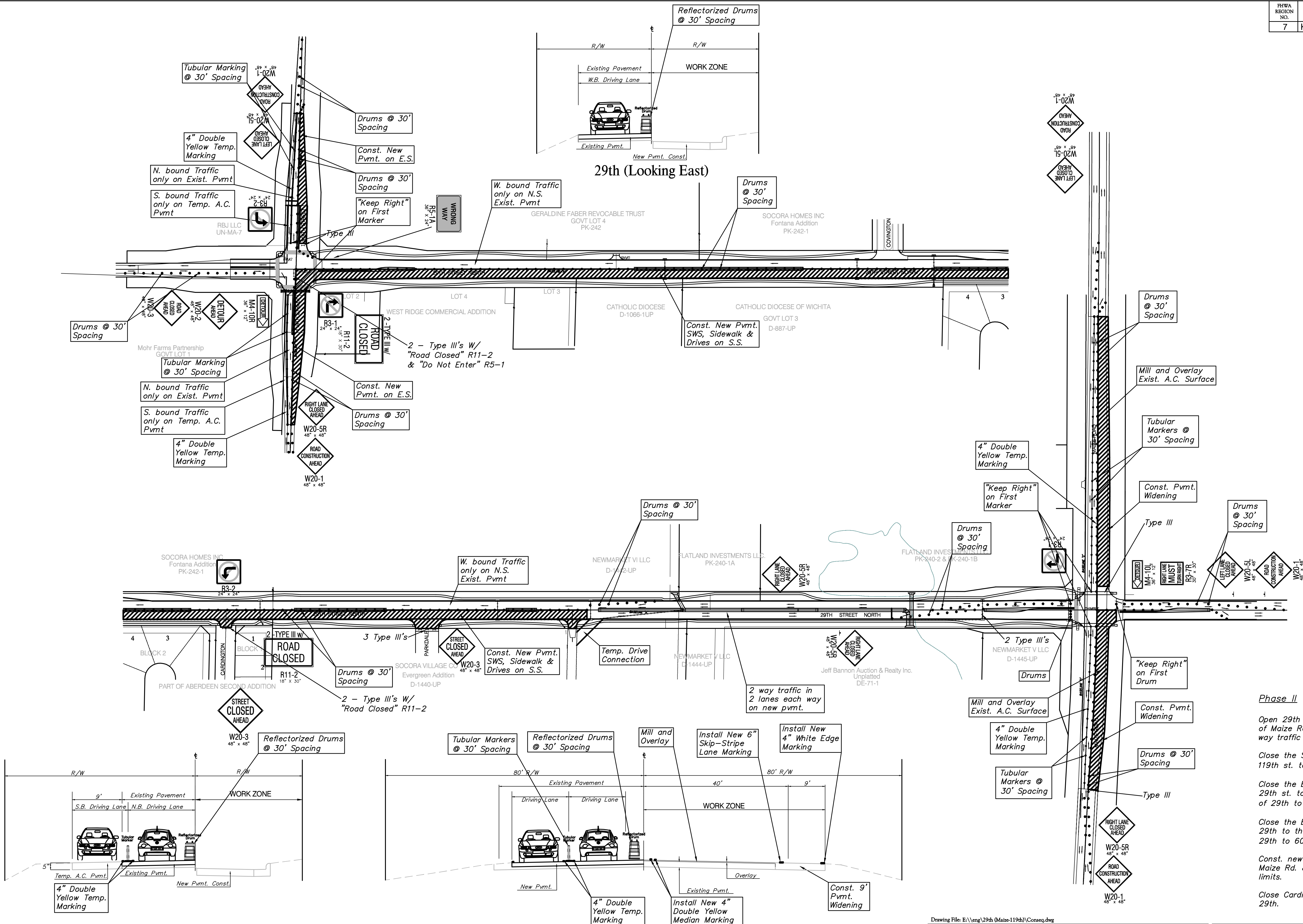
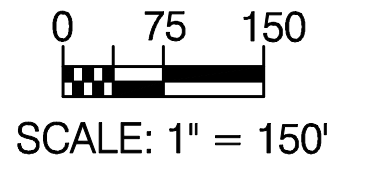


PRWA REGION NO.	STATE	PROJECT NO.	FISCAL YEAR	SHEET NO.	TOTAL SHEETS
7	KANSAS	87N-0348-01	2007	80	135



**Phase II**

Open 29th st. full width from approx. 1,600' West of Maize Rd. to the W. side of Maize Rd. to 2-way traffic on new pvmnt.

Close the S side of 29th st. from the center of 119th st. to approx. 1,600' W of Maize Rd.

Close the E side of Maize Rd. from 600' S of 29th st. to the CL of 29th and from the N side of 29th to 950' N of the N side of 29th.

Close the E side of 119th st. from 500' S of 29th to the CL of 29th and from the N.S. of 29th to 600' N of the CL of 29th.

Const. new pvmnt. on the E side of 119th & Maize Rd. & in the S side of 29th in the closed limits.

Close Cardington and Parkdale at the S side of 29th.

119th (Looking North)

**PHASE II-Maize Road (Looking North)**

Detour East Bound through Traffic South to 21st st. N on 119th st.



Drawing File: E:\eng\29th (Maize-119th)\Conseq.dwg  
 Design: AZIERE  
 Drawn: AZIERE  
 Approved: JFB  
 Scale: NOTED

Project No. 0403-E828 CAPITAL IMPROVEMENT PROJECT  
**Phase II**  
 Construction Sequencing  
 29th Street Paving Project - Maize Road to 119th Street

**Baughman Company, P.A.**  
 315 Ellis St. Wichita, KS 67211 P 316-262-7271 F 316-262-0149  
 ENGINEERING | SURVEYING | PLANNING | LANDSCAPE ARCHITECTURE

MARCH, 2007  
 SHEET **80** OF **135**