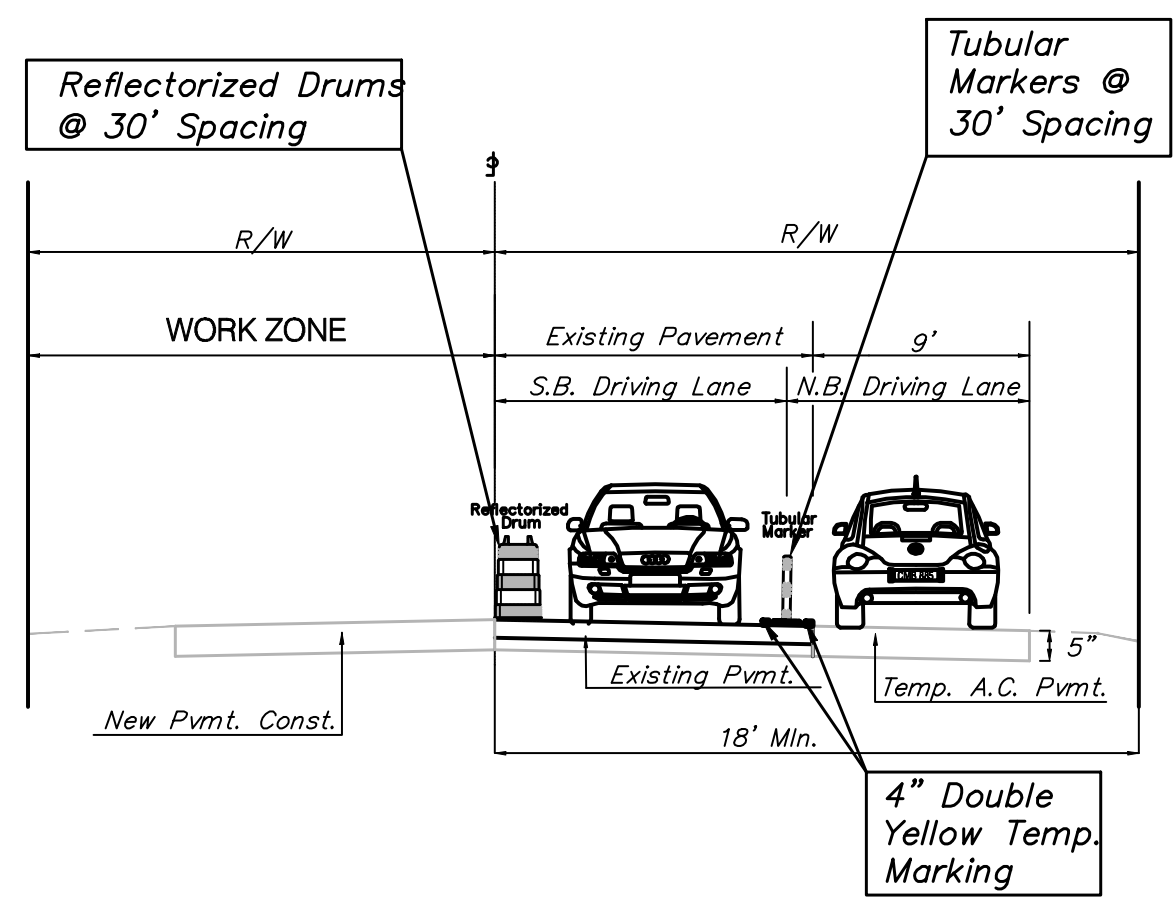
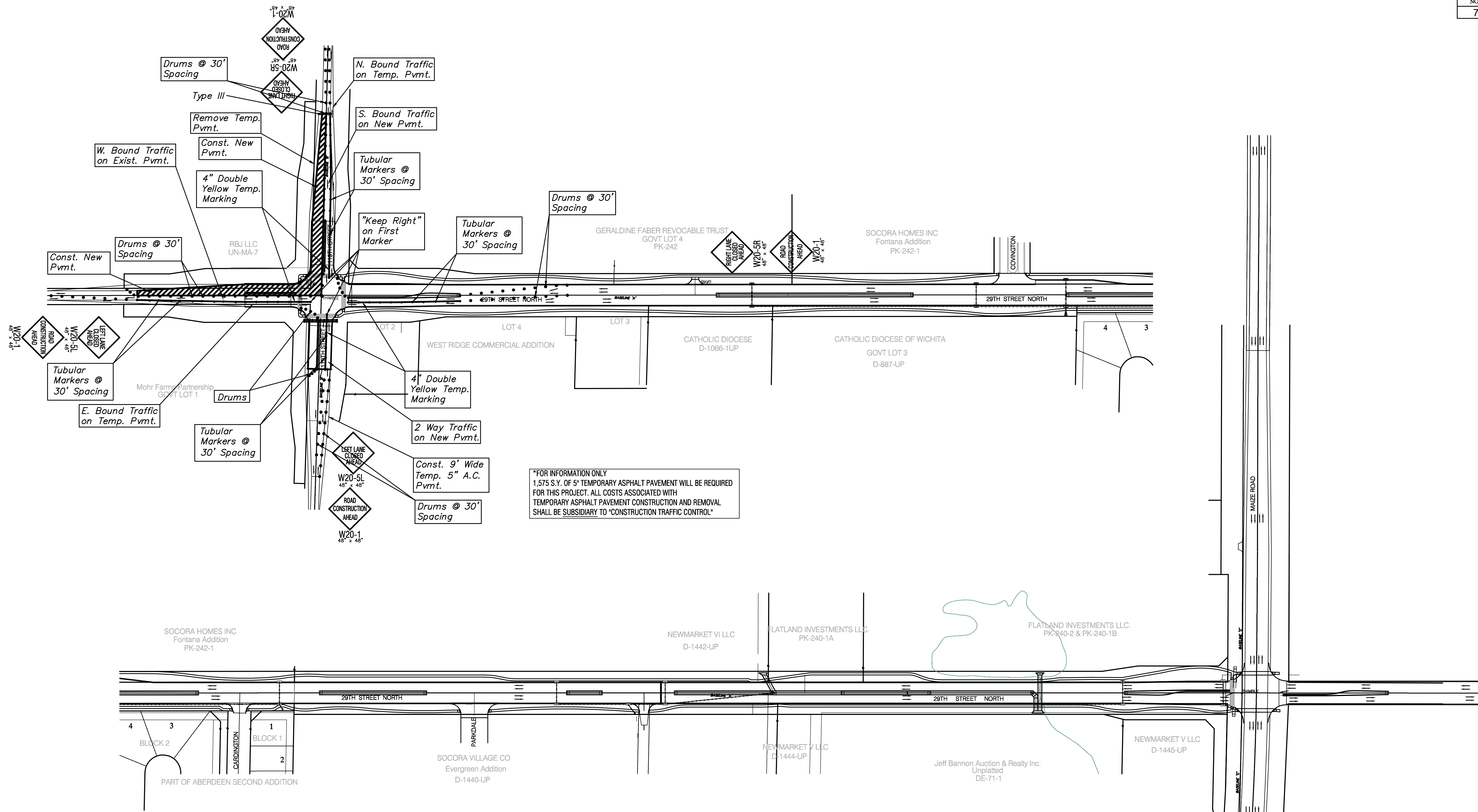
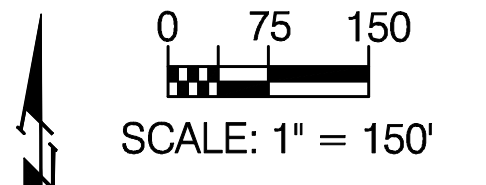
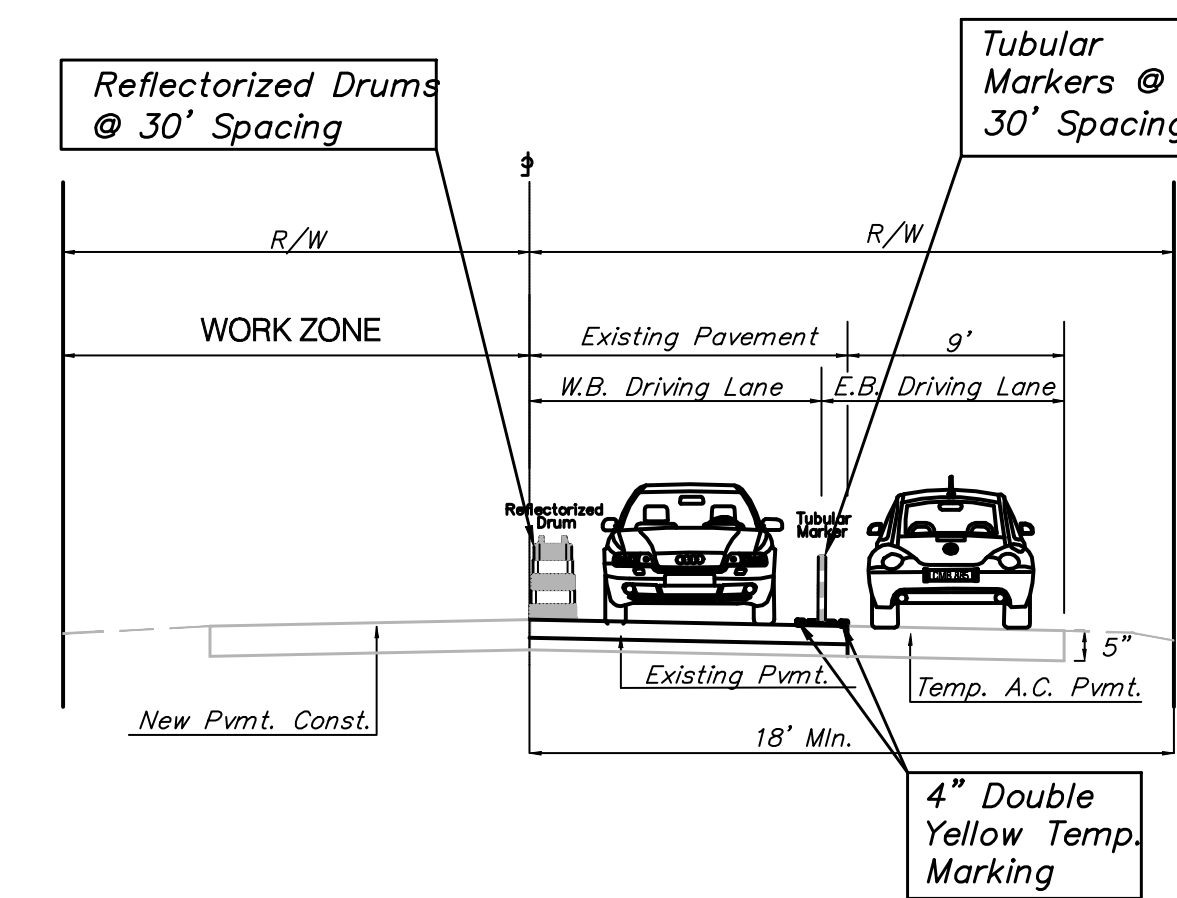


RTWA REGION NO.	STATE	PROJECT NO.	FISCAL YEAR	SHEET NO.	TOTAL SHEETS
7	KANSAS	87N-0348-01	2007	82	135



119th St. (Looking North)



29th St. (Looking East)

Phase IV

Close the W. side of 119th St. N. of the CL of 29th & the N. side of 29th W. of the CL of 119th.

Const. new pvmt. in closed areas.

S. bound traffic on 119th St. on new pvmt. N. bound traffic on 119th St. on temp pvmt. and new pvmt.

2-Way traffic on 29th St. West of 119th on exist. pvmt.

2-Way traffic on 29th St. East of 119th & Maize Rd. Traffic to be on new pvmt.

CONSTRUCTION ZONE

Drawing File: E:\eng\29th (Maize-119th)\Conseq.dwg
 Design: AZIERE Project No. 0403-E828 CAPITAL IMPROVEMENT PROJECT
 Drawn: AZIERE
 Approved: JFB
 Scale: NOTED

Phase IV
 Construction Sequencing
 29th Street Paving Project - Maize Road to 119th Street

Baughman Company, P.A.
 315 Ellis St. Wichita, KS 67211 P 316-262-7271 F 316-262-0149
 ENGINEERING | SURVEYING | PLANNING | LANDSCAPE ARCHITECTURE

MARCH, 2007
 SHEET 82 OF 135