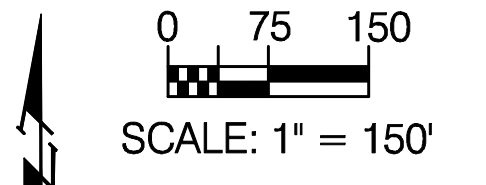
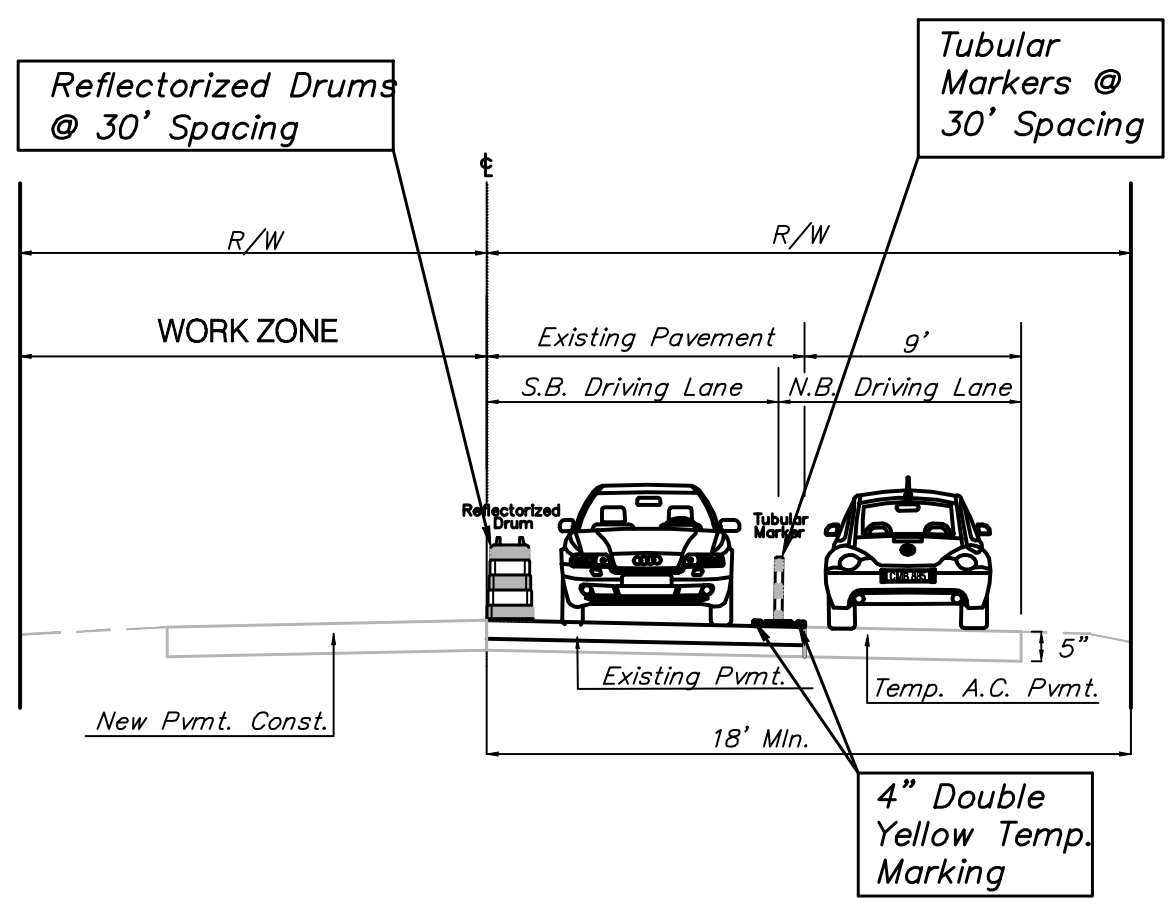
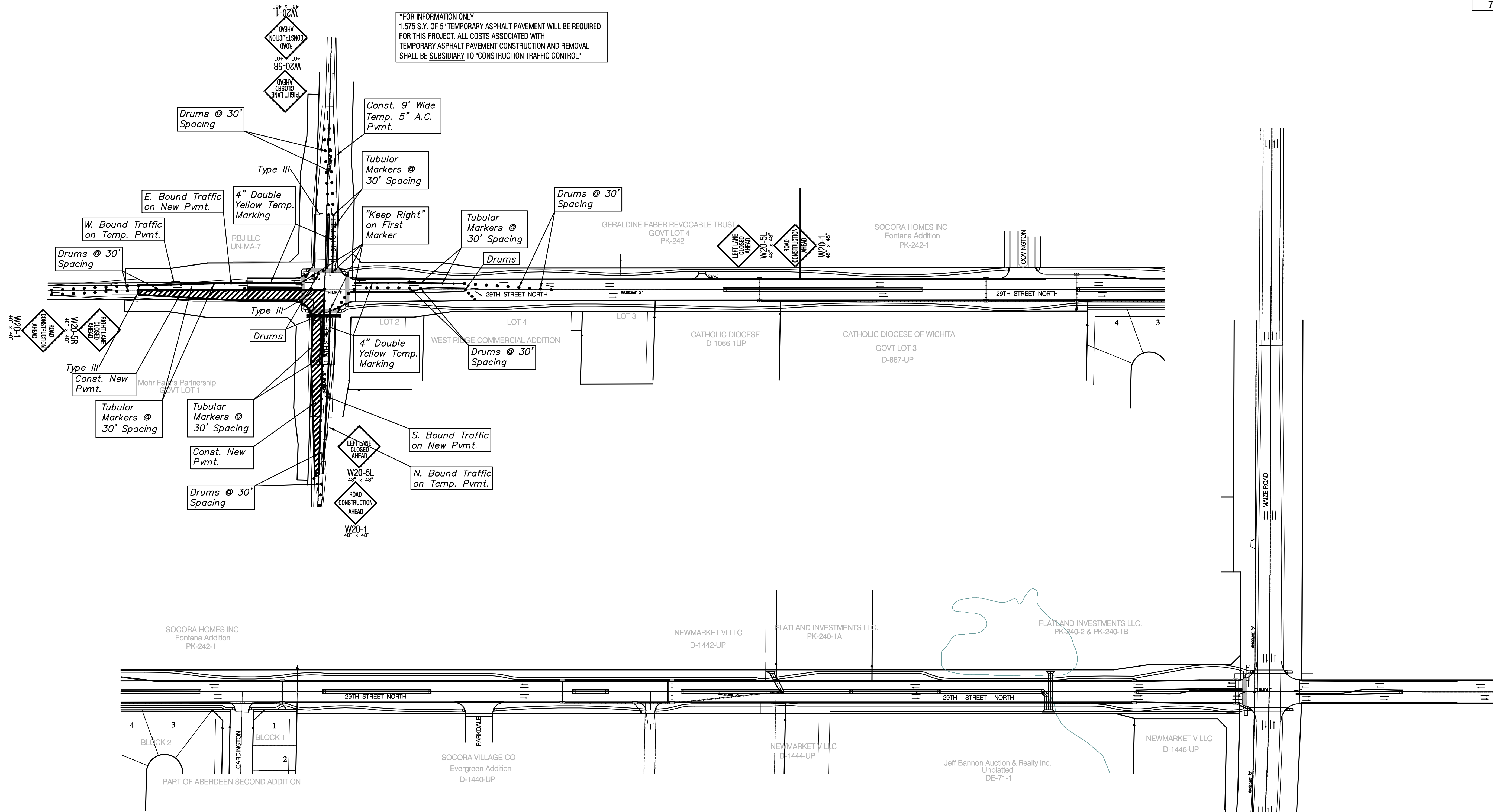


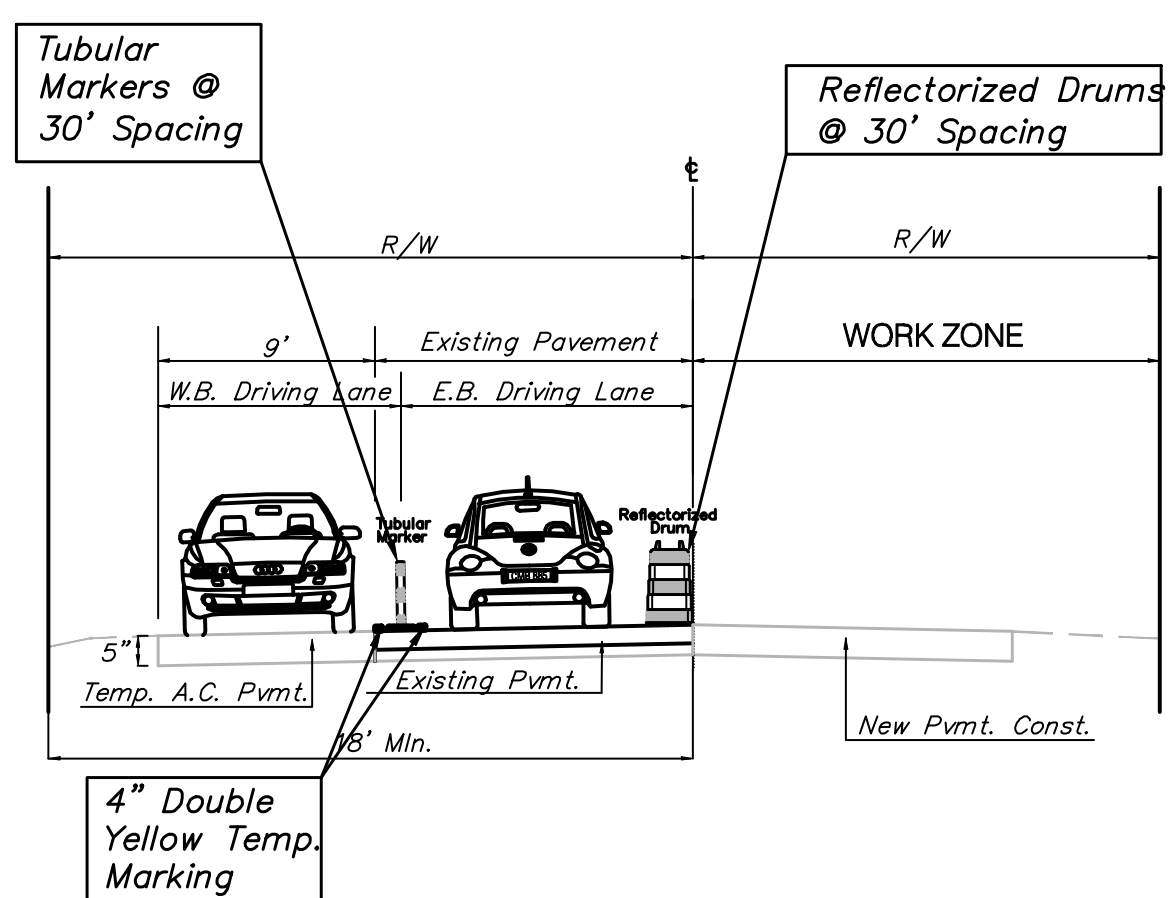
PRWA REGION NO.	STATE	PROJECT NO.	FISCAL YEAR	SHEET NO.	TOTAL SHEETS
7	KANSAS	87N-0348-01	2007	83	135



*FOR INFORMATION ONLY
1,575 S.Y. OF 5" TEMPORARY ASPHALT PAVEMENT WILL BE REQUIRED FOR THIS PROJECT. ALL COSTS ASSOCIATED WITH TEMPORARY ASPHALT PAVEMENT CONSTRUCTION AND REMOVAL SHALL BE SUBSIDIARY TO "CONSTRUCTION TRAFFIC CONTROL."



119th St. (Looking North)



29th St. (Looking East)

Phase V

Close the South side of 29th St. West of the CL of 119th St. & the West side of 119th St. South of the CL of 29th.

Const. new pvmnt in closed areas. Remove temp. pvmnt. on E. side of 119th St. N of 29th St.

North bound traffic on 119th on temp. pvmnt and new pvmnt. S. bound traffic on 119th on new pvmnt. E. bound traffic on 29th on new pvmnt. W. bound traffic on 29th on new pvmnt. All traffic in 29th E. of 119th & in Maize Rd. on new pvmnt.

CONSTRUCTION ZONE

Drawing File: E:\eng\29th (Maize-119th)\Conseq.dwg
 Design: AZIERE Project No. 0403-E828 CAPITAL IMPROVEMENT PROJECT
 Drawn: AZIERE
 Approved: JFB
 Scale: NOTED
Phase V
 Construction Sequencing
 29th Street Paving Project - Maize Road to 119th Street

B **Baughman Company, P.A.**
 315 Ellis St. Wichita, KS 67211 P 316-262-7271 F 316-262-0149
 ENGINEERING | SURVEYING | PLANNING | LANDSCAPE ARCHITECTURE
 MARCH, 2007
 SHEET **83** OF **135**