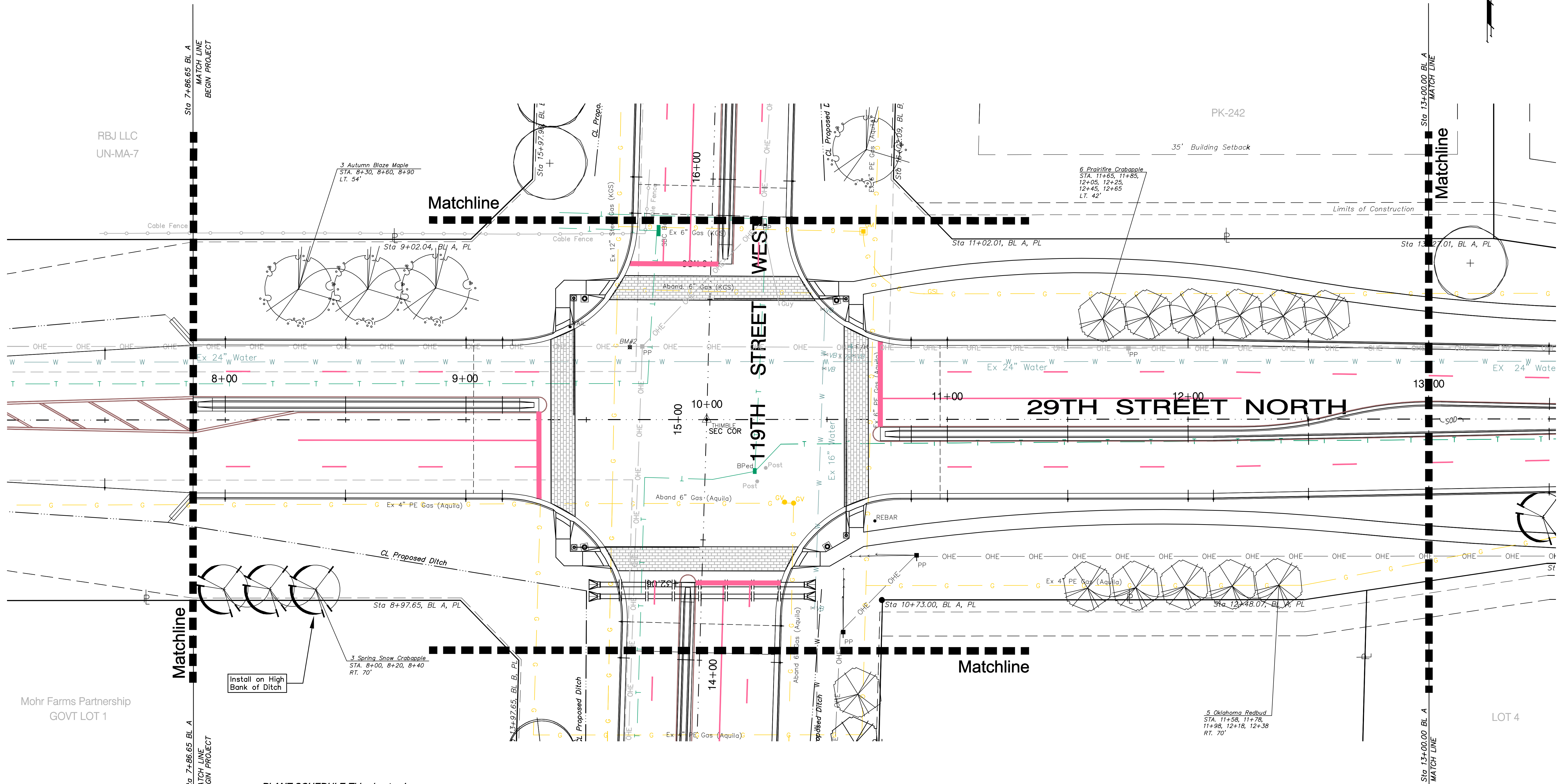
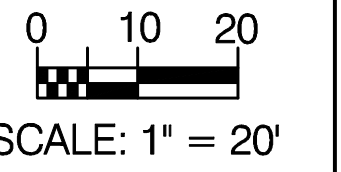


BENCHMARKS

BM#2 - City of Wichita Bench Mark Disc, Located at the Northwest Corner of 119th Street & 29th Street Intersection. Elev. = 1360.93 MSL (173.53 City Datum)

| PRWA REGION NO. | STATE | PROJECT NO. | FISCAL YEAR | SHEET NO. | TOTAL SHEETS |
|-----------------|--------|-------------|-------------|-----------|--------------|
| 7 | KANSAS | 87N-0348-01 | 2007 | 96 | 135 |



PLANT SCHEDULE-This sheet only

| QTY | BOTANICAL NAME | COMMON NAME | SIZE | CONDITION | REMARKS |
|-------------------------|-------------------------------------|-----------------------|---------|-----------|------------------|
| TREES | | | | | |
| 3 | <i>Acer fremanii</i> 'Autumn Blaze' | Autumn Blaze Maple | 2" Cal. | B&B | Single Stem Only |
| ORNAMENTAL TREES | | | | | |
| 5 | <i>Cercis reniformis</i> 'Oklahoma' | Oklahoma Redbud | 2" Cal. | B&B | Single Stem Only |
| 6 | <i>Malus</i> 'Prairifire' | Prairifire Crabapple | 2" Cal. | B&B | Single Stem Only |
| 3 | <i>Malus</i> 'Spring Snow' | Spring Snow Crabapple | 2" Cal. | B&B | Single Stem Only |

Landscape Contractor to Install Hardwood Mulch at a Minimum Depth of 3"

Drawing File: F:\eng\29th (Maize-119th)\Landscape\29th Landscape.dwg
 Design: KTG
 Drawn: KTG
 Approved: BDT
 Scale: 1" = 20'

Project No. 03-06-601 CAPITAL IMPROVEMENT PROJECT
29th Street Landscape Plan
 Sta. 8+00 to Sta. 13+00
 29th Street Expansion & Beautification - Maize Road to 119th Street

Baughman Company, P.A.
 315 Ellis St. Wichita, KS 67211 P 316-262-7271 F 316-262-0149
 ENGINEERING | SURVEYING | PLANNING | LANDSCAPE ARCHITECTURE

June 2007
 SHEET
96
 OF
135