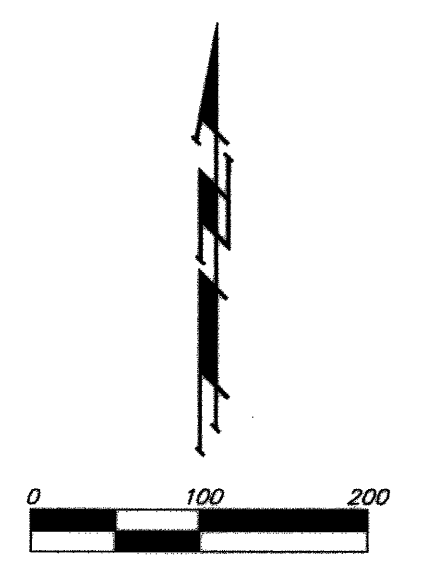


NORTHGATE ADDITION WICHITA, SEDGWICK COUNTY, KANSAS

FOR REFERENCE ONLY
NOT TO SCALE



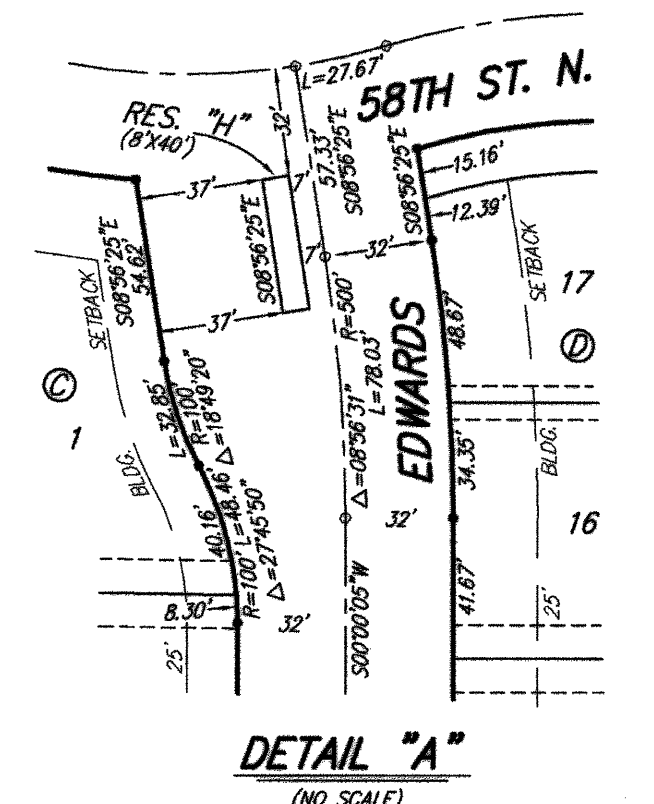
- = #4 REBAR W/ 'BAUGHMAN' SET (SET)
 - = #4 REBAR W/ 'BAUGHMAN' CAP (FOUND)
 - = 1/2" IRON (FOUND)
 - = #5 REBAR (FOUND)
 - △ = 1" SQUARE IRON BAR (FOUND)
 - = #5 REBAR W/ ALLEGRE CAP (FOUND)
-
- (M) = MEASURED
 - (D) = DESCRIBED
 - (C) = CALCULATED
 - (P) = RELATED INFO PER FOX MEADOW ADD.
 - (C-PF) = CALCULATED INFO PER FOX MEADOW ADD.
 - (CM) = CALCULATED PER MEASURED INFO
 - (C-D) = CALCULATED PER DESCRIBED INFO.

MINIMUM BUILDING PAD ELEVATIONS FOR LOWEST OPENING TO THE STRUCTURES		
LOT	BLOCK	ELEVATION
1-5	A	1337.0
6, 7, 13-22	B	1338.0
26, 27, 32, 33	B	1338.0
6-13, 15-28	C	1338.0
30-33, 43-52	C	1338.0
53-61, 64-66	C	1338.0
53, 54	C	1336.0

BENCHMARK:
BENT 60# NAIL IN LIGHT POLE,
55' SSW OF THE E1/4 COR.,
SEC. 13, TWP. 26-S, R-1-W.
ELEV. = 1336.54 NGVD29

RAILROAD SPIKE IN E. FACE OF N. 7" POLE,
60 1/2' S. OF N. LINE 51/2' NE1/4, SEC. 13,
TWP. 26-S, R-1-W.
ELEV. = 1335.83 NGVD29

"I" CUT ON TOP OF NE COR. OF
WATER VAULT, 437 1/2' E. & 54 1/2' N. OF
S1/4 COR., SEC. 13, TWP. 26-S, R-1-W.
ELEV. = 1334.81 NGVD29



NOTE:
A master grading plan for drainage has been developed for this subdivision and is on file with the City of Wichita, Kansas. All drainage easements, right-of-ways, or reserves shall remain at established grades or as modified with the approval of the City Engineer of the City of Wichita, Kansas. No obstructions which impede the flow of this drainage system be allowed.

Baughman Company, P.A.
 315 Ellis St. Wichita, KS 67211 P 316-262-7121 F 316-262-0149
 ENGINEERING | SURVEYING | PLANNING | LANDSCAPE ARCHITECTURE
 1000 W. 17th St., Suite 200, Wichita, KS 67202
 www.baughman.com

NORTHGATE ADD. Ph. 4A
COPY OF PLAT
 STREET IMPROVEMENTS

BUSINESS SHEET
26
 OF
28