



© 2020 GARVER, LLC
 THIS DOCUMENT, ALONG WITH THE IDEAS AND DESIGNS CONVEYED HEREIN, SHALL BE CONSIDERED INSTRUMENTS OF PROFESSIONAL SERVICE AND ARE PROPERTY OF GARVER, LLC. ANY USE, REPRODUCTION, OR DISTRIBUTION OF THIS DOCUMENT, ALONG WITH THE IDEAS AND DESIGN CONTAINED HEREIN, IS PROHIBITED UNLESS AUTHORIZED IN WRITING BY GARVER, LLC OR EXPLICITLY ALLOWED IN THE GOVERNING PROFESSIONAL SERVICES AGREEMENT FOR THIS WORK.

8535 E. 21st St. N.
 Suite 130
 Wichita, KS 67206
 (316) 264-8008



| REV. | DATE | DESCRIPTION | BY |
|------|------|-------------|----|
| | | | |
| | | | |
| | | | |



CITY OF WICHITA
 WICHITA, KANSAS
 MALLARD ESTATES
 MAIZE, KANSAS
 WATER PLANS

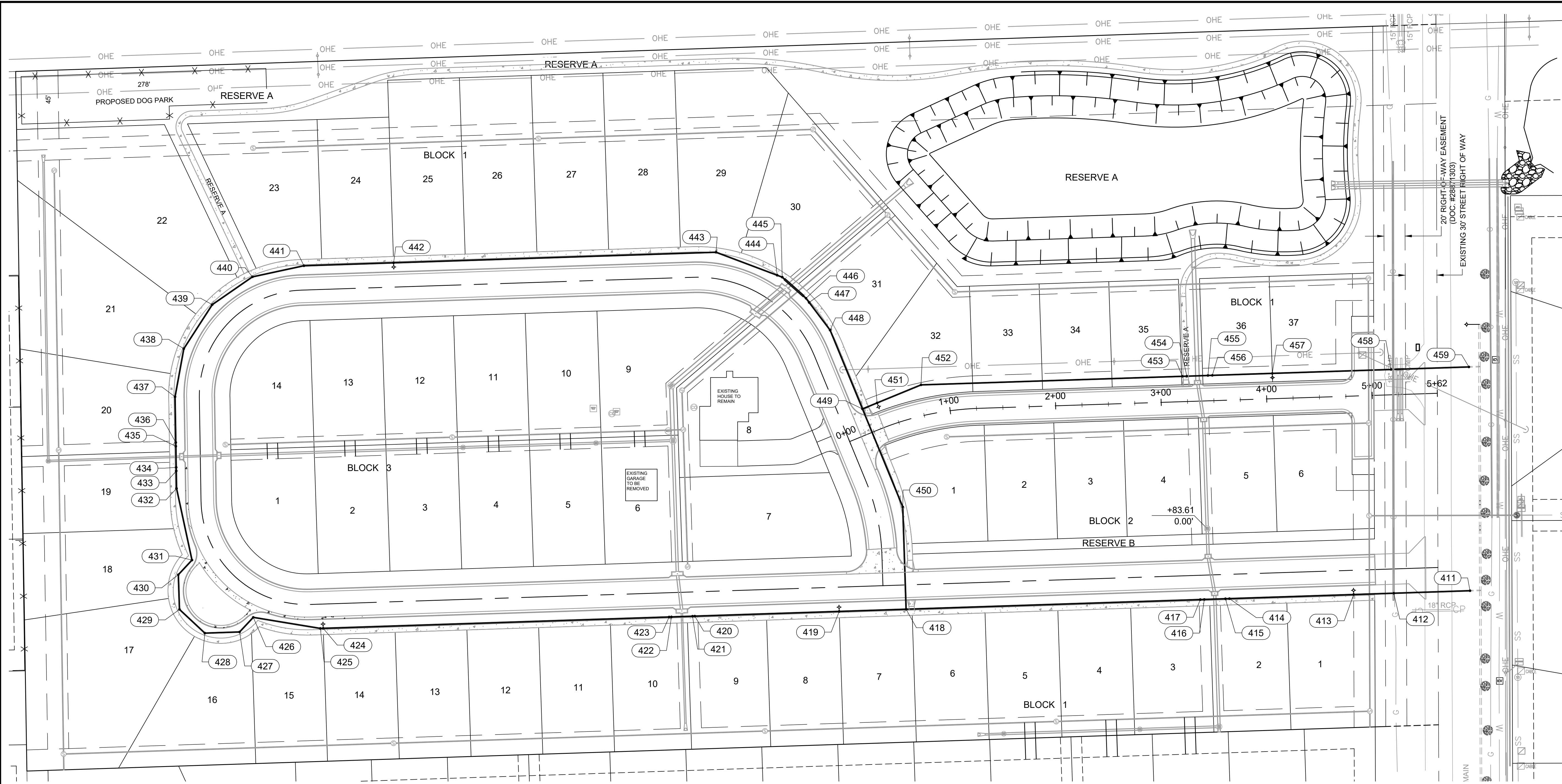
WATER BUBBLE MAP

JOB NO.: 20T41152
 DATE: DEC. 2020
 DESIGNED BY: .
 DRAWN BY: .

BAR IS ONE INCH ON ORIGINAL DRAWING
 IF NOT ONE INCH ON THIS SHEET, ADJUST SCALES ACCORDINGLY.

DRAWING NUMBER

SHEET NUMBER **10** OF **18**



| Point # | Northing | Easting | Description |
|---------|------------|------------|------------------|
| 411 | 1705957.00 | 1607225.30 | CONNECT TO EXIST |
| 412 | 1705954.63 | 1607153.09 | PVI |
| 413 | 1705953.39 | 1607115.11 | FH |
| 414 | 1705949.53 | 1606997.43 | BEND 45° (VERT) |
| 415 | 1705949.40 | 1606993.65 | BEND 45° (VERT) |
| 416 | 1705948.75 | 1606973.66 | BEND 45° (VERT) |
| 417 | 1705948.62 | 1606969.84 | BEND 45° (VERT) |
| 418 | 1705939.48 | 1606691.21 | TEE |
| 419 | 1705937.41 | 1606627.84 | FH |
| 420 | 1705932.92 | 1606491.05 | BEND 45° (VERT) |
| 421 | 1705932.85 | 1606488.92 | BEND 45° (VERT) |

| Point # | Northing | Easting | Description |
|---------|------------|------------|-----------------|
| 422 | 1705932.19 | 1606468.93 | BEND 45° (VERT) |
| 423 | 1705932.12 | 1606466.76 | BEND 45° (VERT) |
| 424 | 1705921.38 | 1606139.11 | FH |
| 425 | 1705921.29 | 1606136.39 | BEND 11.25° |
| 426 | 1705931.77 | 1606072.88 | BEND 45° |
| 427 | 1705917.92 | 1606059.93 | BEND 45° |
| 428 | 1705916.82 | 1606027.03 | BEND 45° |
| 429 | 1705939.30 | 1606003.00 | BEND 45° |
| 430 | 1705972.19 | 1606001.89 | BEND 45° |
| 431 | 1705986.04 | 1606014.85 | BEND 45° |
| 432 | 1706053.97 | 1606000.20 | BEND 11.25° |

| Point # | Northing | Easting | Description |
|---------|------------|------------|-----------------|
| 433 | 1706070.50 | 1605999.93 | BEND 45° (VERT) |
| 434 | 1706073.90 | 1605999.88 | BEND 45° (VERT) |
| 435 | 1706093.89 | 1605999.56 | BEND 45° (VERT) |
| 436 | 1706097.50 | 1605999.50 | BEND 45° (VERT) |
| 437 | 1706140.81 | 1605998.80 | BEND 11.25° |
| 438 | 1706186.36 | 1606007.11 | BEND 22.5° |
| 439 | 1706228.12 | 1606034.05 | BEND 22.5° |
| 440 | 1706254.45 | 1606072.12 | BEND 22.5° |
| 441 | 1706264.96 | 1606120.88 | BEND 11.25° |
| 442 | 1706267.75 | 1606205.79 | FH |
| 443 | 1706277.76 | 1606511.17 | BEND 22.5° |

| Point # | Northing | Easting | Description |
|---------|------------|------------|-----------------|
| 444 | 1706255.96 | 1606569.12 | BEND 45° (VERT) |
| 445 | 1706254.16 | 1606573.89 | BEND 45° (VERT) |
| 446 | 1706234.16 | 1606596.38 | BEND 45° (VERT) |
| 447 | 1706230.16 | 1606599.40 | BEND 45° (VERT) |
| 448 | 1706203.95 | 1606619.23 | BEND 11.25° |
| 449 | 1706129.29 | 1606649.90 | TEE |
| 450 | 1706036.46 | 1606688.03 | BEND 22.5° |
| 451 | 1706134.99 | 1606663.77 | FH |
| 452 | 1706152.06 | 1606705.34 | BEND 22.5° |
| 453 | 1706160.18 | 1606952.97 | BEND 45° (VERT) |
| 454 | 1706160.32 | 1606957.12 | BEND 45° (VERT) |

| Point # | Northing | Easting | Description |
|---------|------------|------------|------------------|
| 455 | 1706160.97 | 1606977.11 | BEND 45° (VERT) |
| 456 | 1706161.11 | 1606981.25 | BEND 45° (VERT) |
| 457 | 1706162.97 | 1607038.07 | FH |
| 458 | 1706166.66 | 1607150.50 | PVI |
| 459 | 1706169.08 | 1607224.26 | CONNECT TO EXIST |

File: L:\2020\20T41152 - Mallard Estates Engineering\Drawings\C3D\BUBBLE MAPS.dwg Last Save: 12/4/2020 10:17 AM Last saved by: DRStandrich
 Last plotted by: Standrich, Darryl R. Plot Style: --- Plot Scale: 1:2,5849 Plot Date: 12/4/2020 10:50 AM Plotter used: None