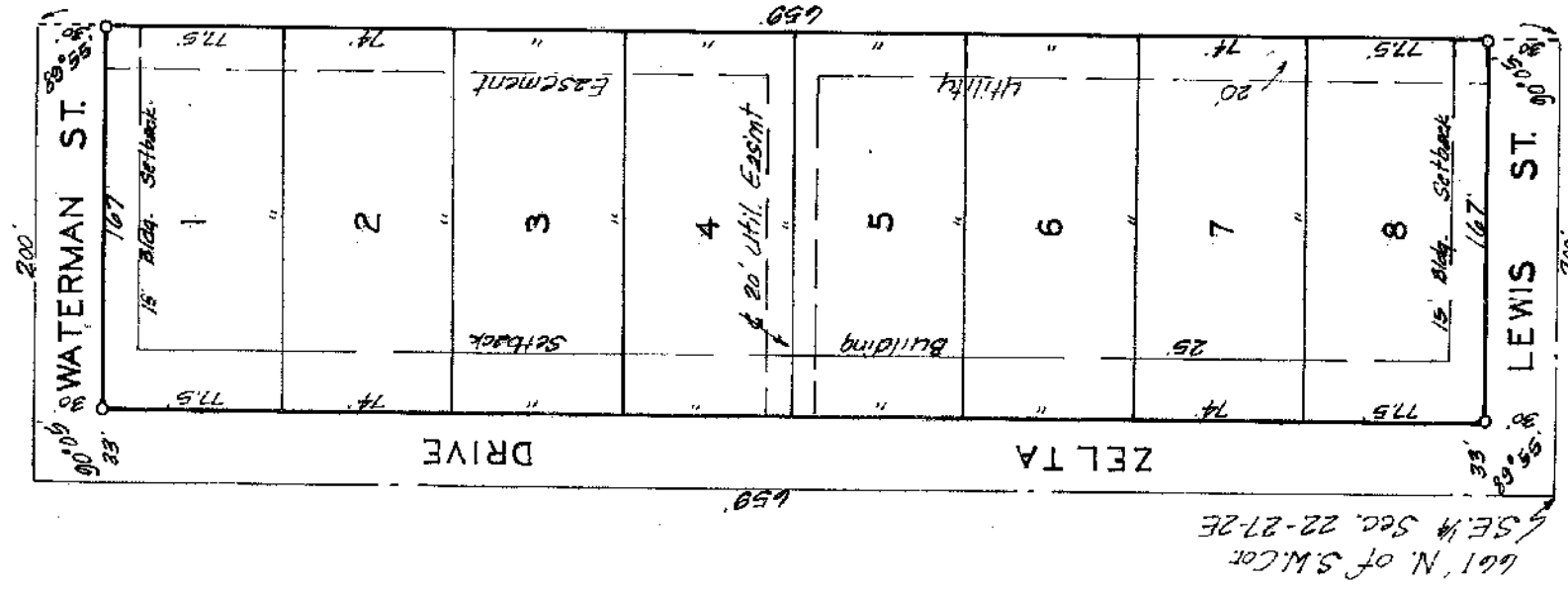
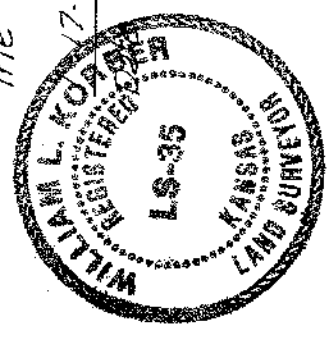


REYNOLD'S 2ND ADDITION

WICHITA KANSAS



State of Kansas 2 Sedgwick County, ss. We, Baughman Company, Surveyors in and for said county and state do hereby certify that we have surveyed and plotted "REYNOLDS 2ND ADDITION" Wichita, Kansas, and that the accompanying plat is a true and correct exhibit of the property surveyed described as beginning at the SW corner of the S.E. 1/4 of Sec. 22, Twp. 21-S, R-2-E of the 6th P.M., Sedgwick County, Kansas; thence east 330 feet; thence north 1320 feet; thence west 330 feet; thence south to beginning, except the east 130 feet thereof and except the south 44 feet thereof.



that we, the undersigned have caused the land described in the surveyors certificate to be planted into lots and streets to be known as "REYNOLDS 2ND ADDITION", Wichita, Kansas. The easements are hereby granted as indicated for the construction and maintenance of all public utilities. The streets are hereby dedicated to and for the use of the public.

Executor of the Estate of Ethel B. Dawson
Virginia Reynolds
 Virginia & Reynolds

State of Kansas 2 ss. The foregoing instrument was acknowledged before me this 2nd day of February 1979, by Virginia & Reynolds executor of the Estate of Ethel B. Dawson. In testimony whereof I have hereunto set my hand and affixed my notarial seal the day and year written.



Marie A. Savoy
 Notary Public

This plat of "REYNOLDS 2ND ADDITION" Wichita, Kansas has been approved by the Wichita-Sedgwick County Metropolitan Area Planning Commission, Wichita, Kansas. Dated this 7th day of December, 1978.

Wichita-Sedgwick County Metropolitan Area Planning Commission
Robert A. Galt Chairman
Robert A. Galt Secretary

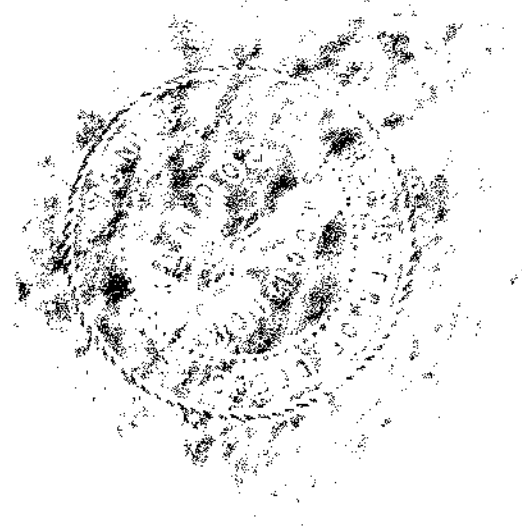
This plat approved and all deductions shown hereon accepted by the Board of Commissioners of the City of Wichita, Kansas, this 7th day of March, 1979.
Constance A. Peters Mayor
Paul E. Allen City Clerk

This plat approved and all deductions shown hereon accepted by the Board of Commissioners of Sedgwick County, Kansas, this 7th day of March, 1979.
Donald B. Hagg Chairman
Donald B. Hagg Commissioner
Barbara K. White County Clerk

Entered on transfer record this 30 day of March, 1979.
Barbara K. White
 Sedgwick County Clerk

State of Kansas 2 Sedgwick County, ss. This is to certify that this plat has been filed for record in the office of the Register of Deeds this 30th day of March, 1979, at 2:22 o'clock P.M.; and is duly recorded.

Betty F. Hest Register of Deeds
Pat Keenley Deputy



H-2 2-18

H-2-2-18

FOR REFERENCE ONLY
 NOT TO SCALE

This digital plat record accurately reproduces in all details the original plat filed with the Sedgwick County Register of Deeds. Digitized under the supervision of Register of Deeds Bill Meek by Sedgwick County Geographic Information Systems.

Bill Meek, Register of Deeds
 Digitized reproduction of original plat



Reynolds 2nd Addition - Phase I EROSION CONTROL Water Distribution System	
Baughman Company, P.A. 315 Ellis St. Wichita, KS 67211 P 316-262-7271 F 316-262-0149 ENGINEERING SURVEYING PLANNING LANDSCAPE ARCHITECTURE	
PROJECT NUMBER 448	DESIGN SRS
REVISIONS:	DRAWN SRS
	APPROVED DATE 09/08/20
	SCALE Noted
	SHEET 12 OF 12