

BENCHMARKS:

BM#1 - "□" Cut at West End of Median, SE of Central Avenue & Tyler Road, 5.92'± South and 47.85'± East of Centerline of Both.

Elev. = 145.75 (City Datum)

BM#2 - V-Notch on Back of Walk at SE Corner of Fazoli's Restaurant Parcel, NE of Central Avenue & Tyler Road, 64.89'± North and 987.32'± West of Centerline of Both.

Elev. = 146.84 (City Datum)

BM#3 - "□" Cut at SE Corner, Lot 4, Tyler Acres 5th Addition, NW of Central Avenue & Socora Lane, 65.10'± North and 34.94'± West of Centerline of Both.

Elev. = 148.79 (City Datum)

CENTRAL AVENUE

from TYLER to WOODCHUCK

STREET & STORM WATER SEWER IMPROVEMENTS

Project No. O.C.A. No.

472-76-245-83192 706835

472-76-245-80748 765723

472-76-245-83515 765727

448-89678 635641

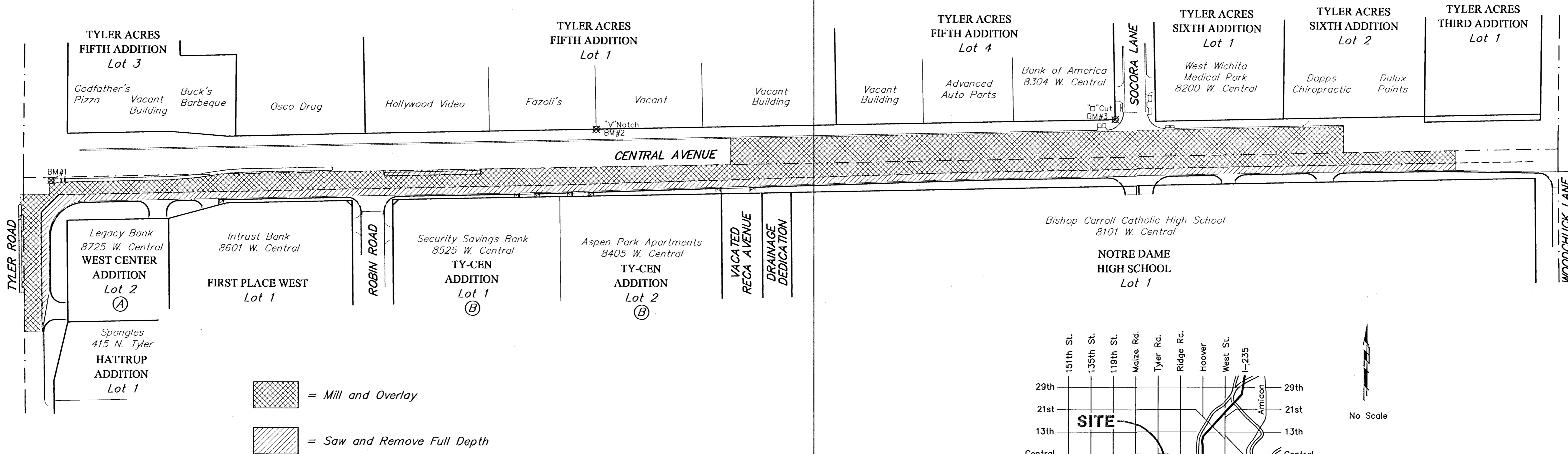
CITY OF WICHITA, KANSAS
 Michael E. Lindebak, P.E. City Engineer
 March 2002

INDEX:

Title Sheet	1
General Notes	2
Typical Pavement Sections	3
Pavement Details	4-5
Entrance Details	6
Paving Plan Sheet - Tyler Road	7
Paving Plan Sheets - Central Avenue	8-12
Storm Sewer Plan/Profile Sheets	13-16
Inlet & Manhole Details	17-20
Fire Hydrant Relocation Plan Sheet	21
Traffic Signalization Plan Sheet	22
Traffic Signalization Details & Specifications	23-28
Pavement Marking & Signing Plan Sheets	29-30
Pavement Marking & Signing Details	31
Construction Traffic Control Sequencing	32
Erosion Control Details	33-36
Earthwork Cross Sections	37-42

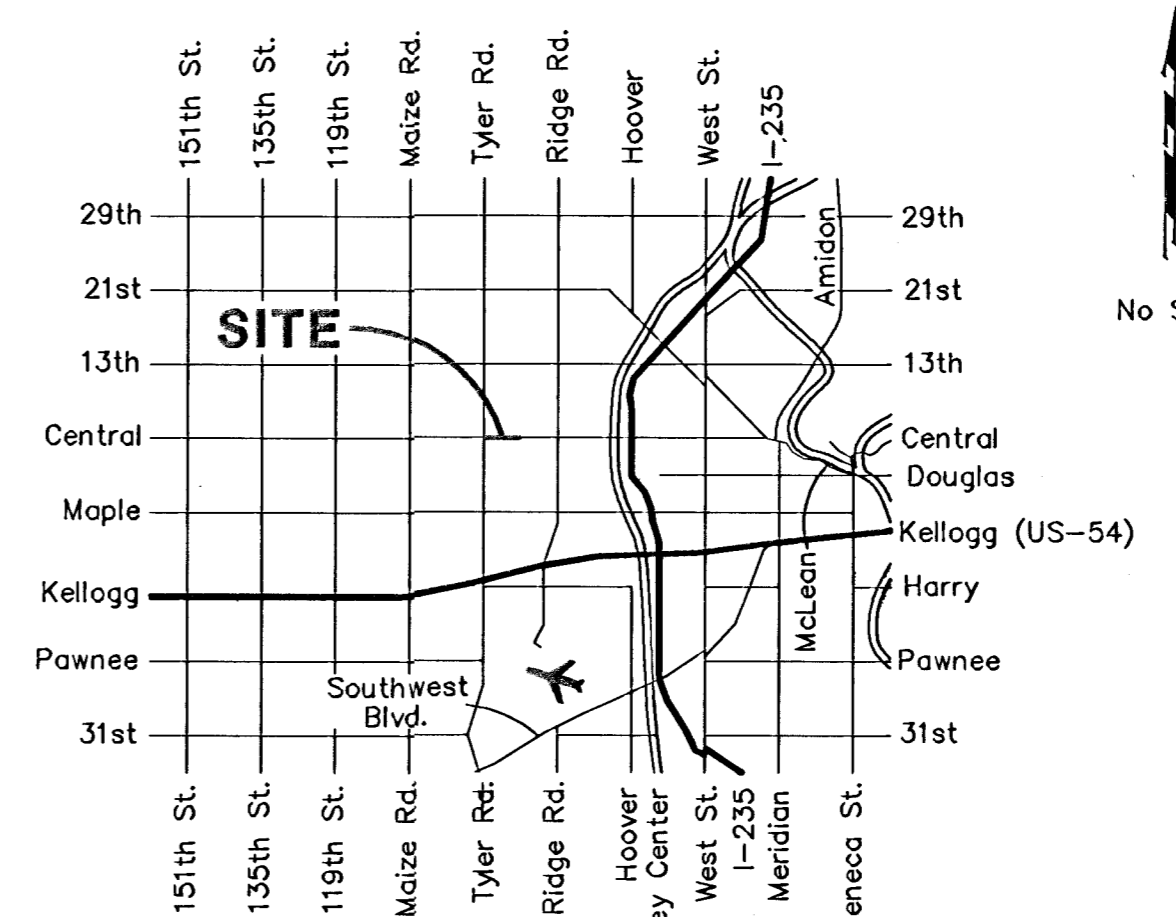
DRAINAGE
BOOKED
2-12-03
MCS
C-244

SCALE: 1" = 100'



= Mill and Overlay

= Saw and Remove Full Depth



EARTHWORK:

Project Totals	
Excavation	= 3214.3 C.Y.
Borrow Excavation (Contractor Furnished)	= 0 C.Y.
Compacted Fill (90%)	= 0 C.Y.
Compacted Fill (95%)	= 0 C.Y.

Vicinity Map

