

BENCHMARK:

BM#2 - V-Notch on Back of Walk at SE Corner of Fazoli's Restaurant Parcel, NE of Central Avenue & Tyler Road, 64.89± North and 987.32± East of Centerline of Both. Sta. 19+87.32 Elev. = 146.84 (City Datum)

Irrigation Systems within Public R/W in Conflict with the New Construction to be Removed and Replaced as Necessary.

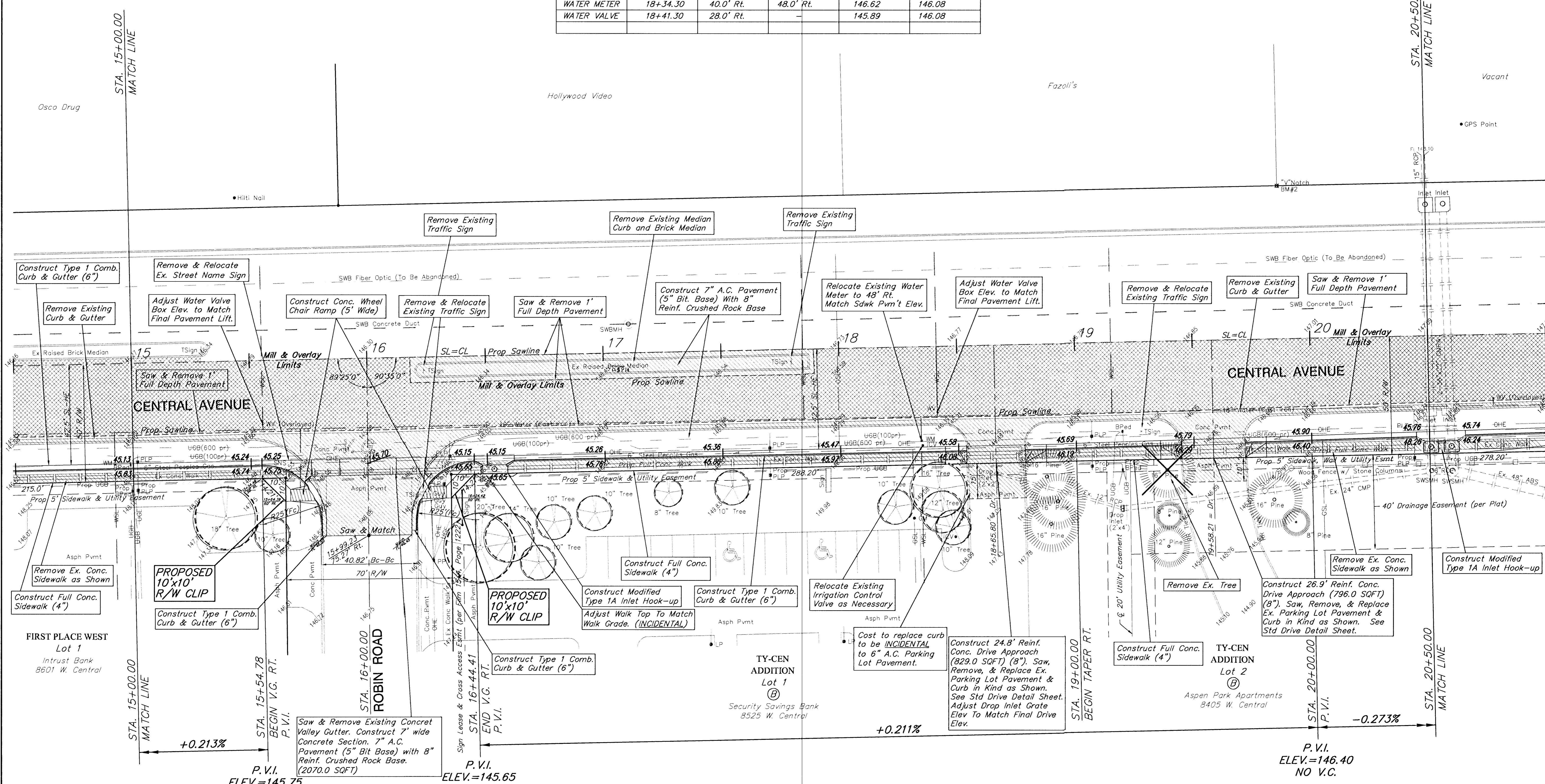
Power Poles & Utilities in Conflict to be Relocated by "Others" Prior to Construction.

[Hatched Pattern] = Mill and Overlay

[Cross-hatched Pattern] = Saw and Remove Full Depth

WATER VALVE BOX & WATER METER ADJUSTMENTS					
ITEM	STATION	EX. OFFSET	NEW OFFSET	EX. ELEV.	NEW ELEV.
WATER VALVE	15+55.76	27.0' Rt.	-	OVERLAYED	145.70
WATER METER	18+34.30	40.0' Rt.	48.0' Rt.	146.62	146.08
WATER VALVE	18+41.30	28.0' Rt.	-	145.89	146.08

SCALE: 1" = 20'



P.V.I. ELEV.=145.75 NO V.C.

P.V.I. ELEV.=145.65 NO V.C.

PROJECT NUMBER City Of Wichita		SHEET NAME PAV03		ENGINEERING DIRECTORY F:\CENTRAL\PAV	
DESIGN JFB/JMN	DRAWN JMN/KWR	APPROVED	DATE FEB 2002	SCALE NOTED	BAUGHMAN NO 99-09-E463

CAPITAL IMPROVEMENT PROJECT
CENTRAL AVENUE
TYLER TO WOODCHUCK
PAVING PLAN - STA. 15+00.00 TO STA. 20+50.00

BAUGHMAN COMPANY, P.A.
ENGINEERING, SURVEYING, & PLANNING
316-262-7271 • 315 ELLIS • WICHITA, KANSAS 67211

SHEET 9 OF 42