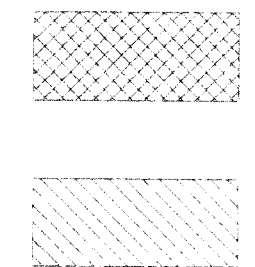


BENCHMARK:

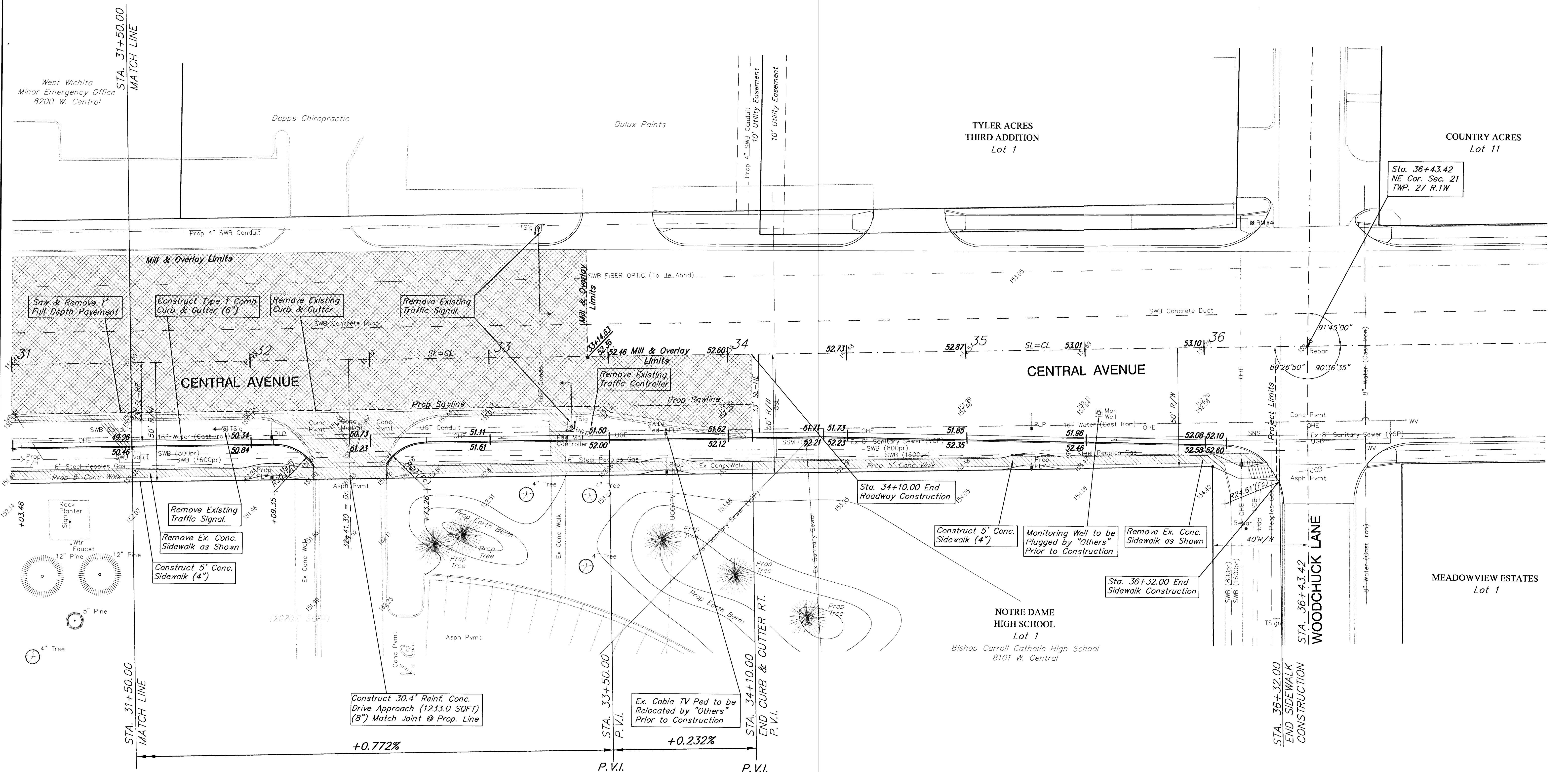
BM#4 - COW Disc at NW Corner of
Central Avenue & Woodchuck Lane,
52.00± North and 24.00± West
of Centerline of Both.
Sta. 36+20.96
Elev. = 154.05 (City Datum)



= Mill and Overlay

= Saw and Remove Full Depth

SCALE: 1" = 20'



Irrigation Systems within Public R/W in Conflict with the New Construction to be Removed and Replaced as Necessary.

Power Poles & Utilities in Conflict to be Relocated by "Others" Prior to Construction.

PROJECT NUMBER City Of Wichita	SHEET NAME PAV06	ENGINEERING DIRECTORY F:\CENTRAL\PAV
DESIGN JFB/JMN	DRAWN JMN/KWR	APPROVED
DATE FEB 2002	SCALE NOTED	BAUGHMAN NO 99-09-E463

CAPITAL IMPROVEMENT PROJECT
**CENTRAL AVENUE
TYLER to WOODCHUCK**
PAVING PLAN - STA. 31+50.00 to STA. 36+32.00

BAUGHMAN COMPANY, P.A.
ENGINEERING, SURVEYING, & PLANNING
316-262-7271 • 315 ELLIS • WICHITA, KANSAS 67211

SHEET
OF
12
42