

**BENCHMARK:**

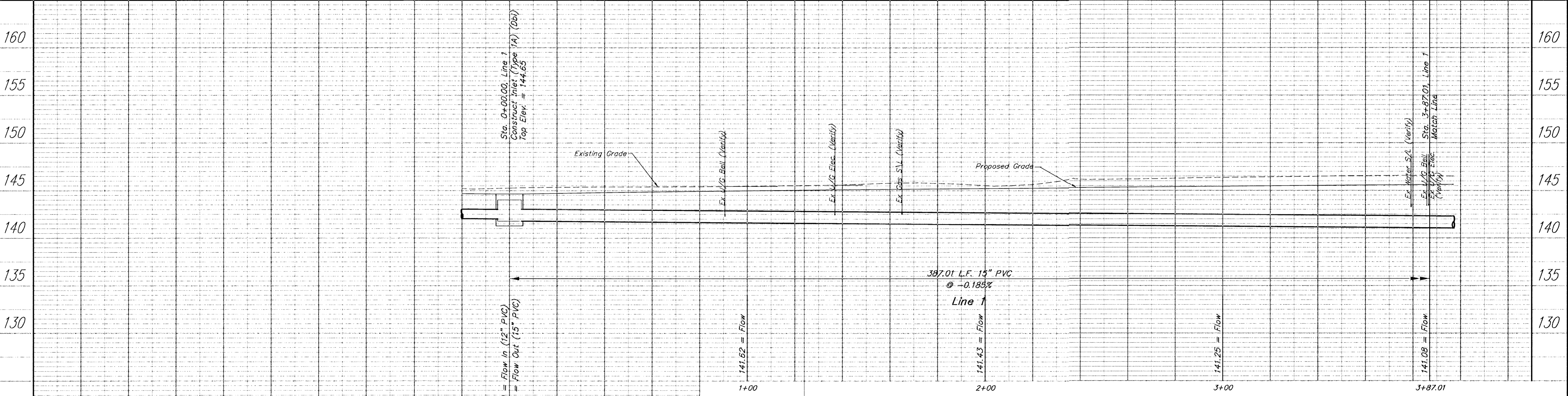
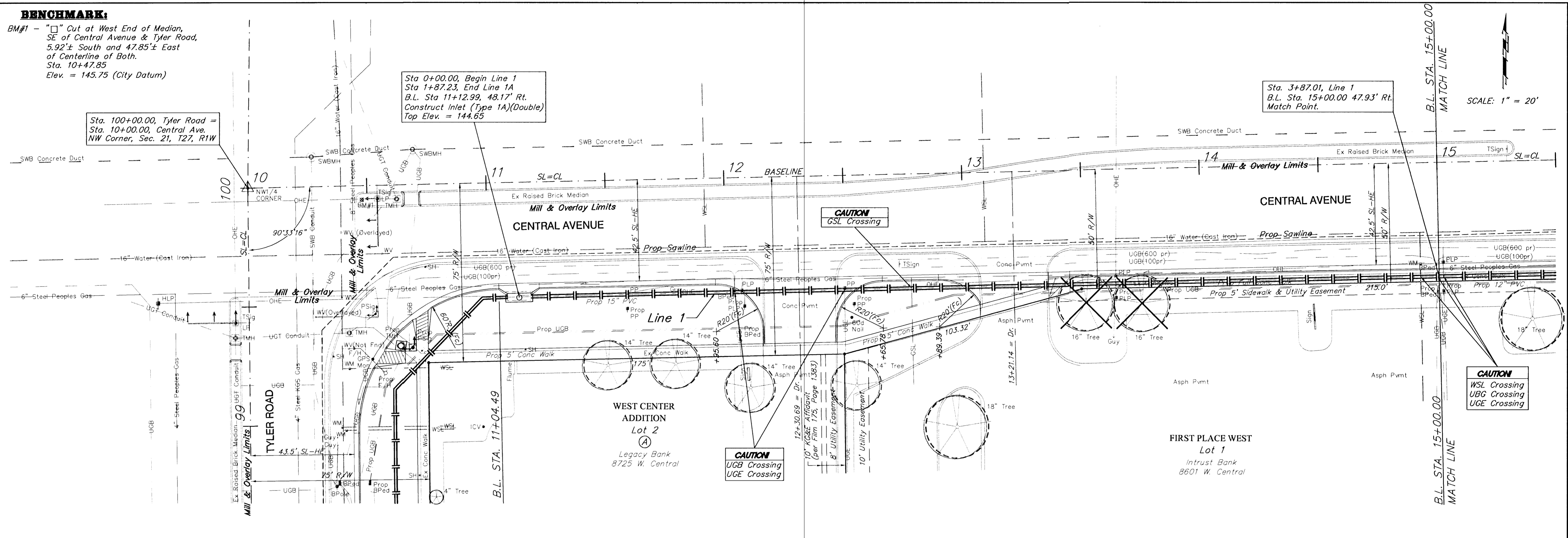
BM#1 - "□" Cut at West End of Median, SE of Central Avenue & Tyler Road, 5.92'± South and 47.85'± East of Centerline of Both. Sta. 10+47.85 Elev. = 145.75 (City Datum)

Sta. 100+00.00, Tyler Road = Sta. 10+00.00, Central Ave. NW Corner, Sec. 21, T27, R1W

Sta 0+00.00, Begin Line 1  
Sta 1+87.23, End Line 1A  
B.L. Sta 11+12.99, 48.17' Rt.  
Construct Inlet (Type 1A)(Double)  
Top Elev. = 144.65

Sta. 3+87.01, Line 1  
B.L. Sta. 15+00.00 47.93' Rt.  
Match Point.

SCALE: 1" = 20'



PROJECT NUMBER City Of Wichita		SHEET NAME SWS01		ENGINEERING DIRECTORY F:CENTRAL/SWS	
DESIGN JFB/JMN	DRAWN STAFF	APPROVED	DATE FEB 2002	SCALE NOTED	BAUGHMAN NO 99-09-E463

STREET & STORM WATER SEWER IMPROVEMENTS  
**STORM WATER SEWER  
LINE 1**  
CENTRAL AVENUE - TYLER TO WOODCHUCK

**BAUGHMAN COMPANY, P.A.**  
ENGINEERING, SURVEYING, & PLANNING  
316-262-7271 • 315 ELLIS • WICHITA, KANSAS 67211

SHEET  
OF  
13  
OF  
42