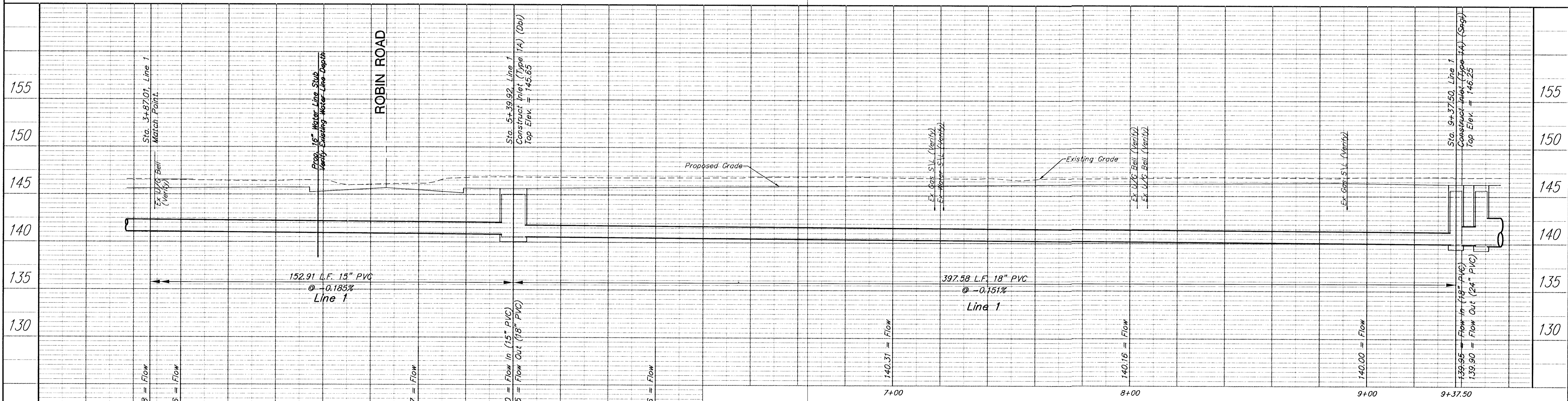


BENCHMARK:
 BM#2 - V-Notch on Back of Walk at SE Corner of Fazoli's Restaurant Parcel, NE of Central Avenue & Tyler Road, 64.89'± North and 987.32'± East of Centerline of Both.
 Sta. 19+87.32
 Elev. = 146.84 (City Datum)

Sta. 5+39.92, Line 1
 B.L. Sta. 16+52.91, 47.83' Rt.
 Construct Inlet (Type 1A) (Double)
 Top Elev. = 145.65

Sta. 9+37.50, Line 1
 B.L. Sta. 20+50.49, 46.76' Rt.
 Construct Inlet (Type 1A) (Single)
 Top Elev. = 146.25
 Match Point

SCALE: 1" = 20'



PROJECT NUMBER City Of Wichita		SHEET NAME SWS02		ENGINEERING DIRECTORY F:\CENTRAL\SWS	
DESIGN JFB/JMN	DRAWN STAFF	APPROVED	DATE FEB 2002	SCALE NOTED	BAUGHMAN NO 99-09-E463
STREET & STORM WATER SEWER IMPROVEMENTS STORM WATER SEWER LINE 1 CENTRAL AVENUE - TYLER TO WOODCHUCK					
BAUGHMAN COMPANY, P.A. ENGINEERING, SURVEYING, & PLANNING 316-282-7271 • 315 ELLIS • WICHITA, KANSAS 67211					SHEET 14 OF 42