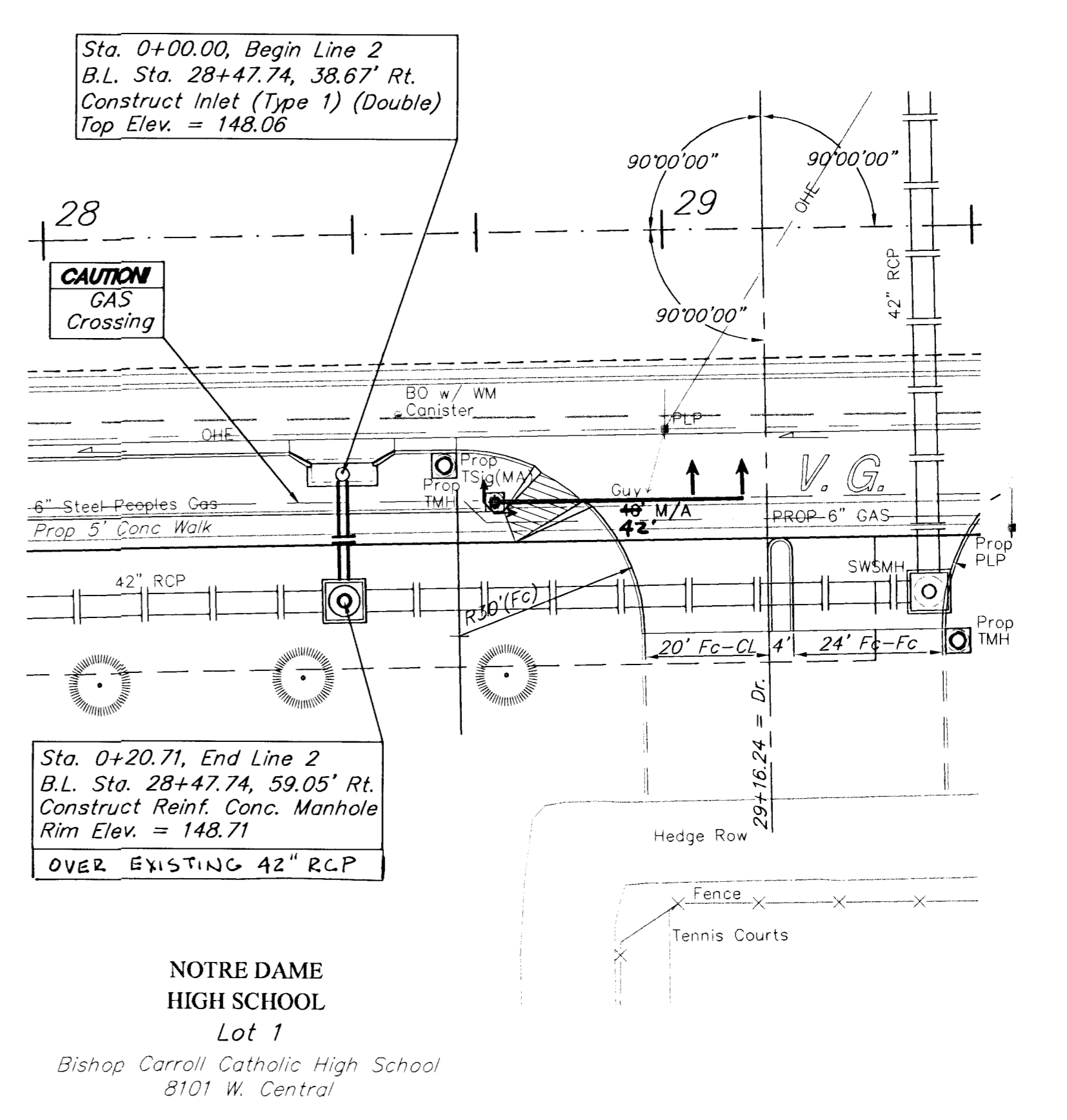
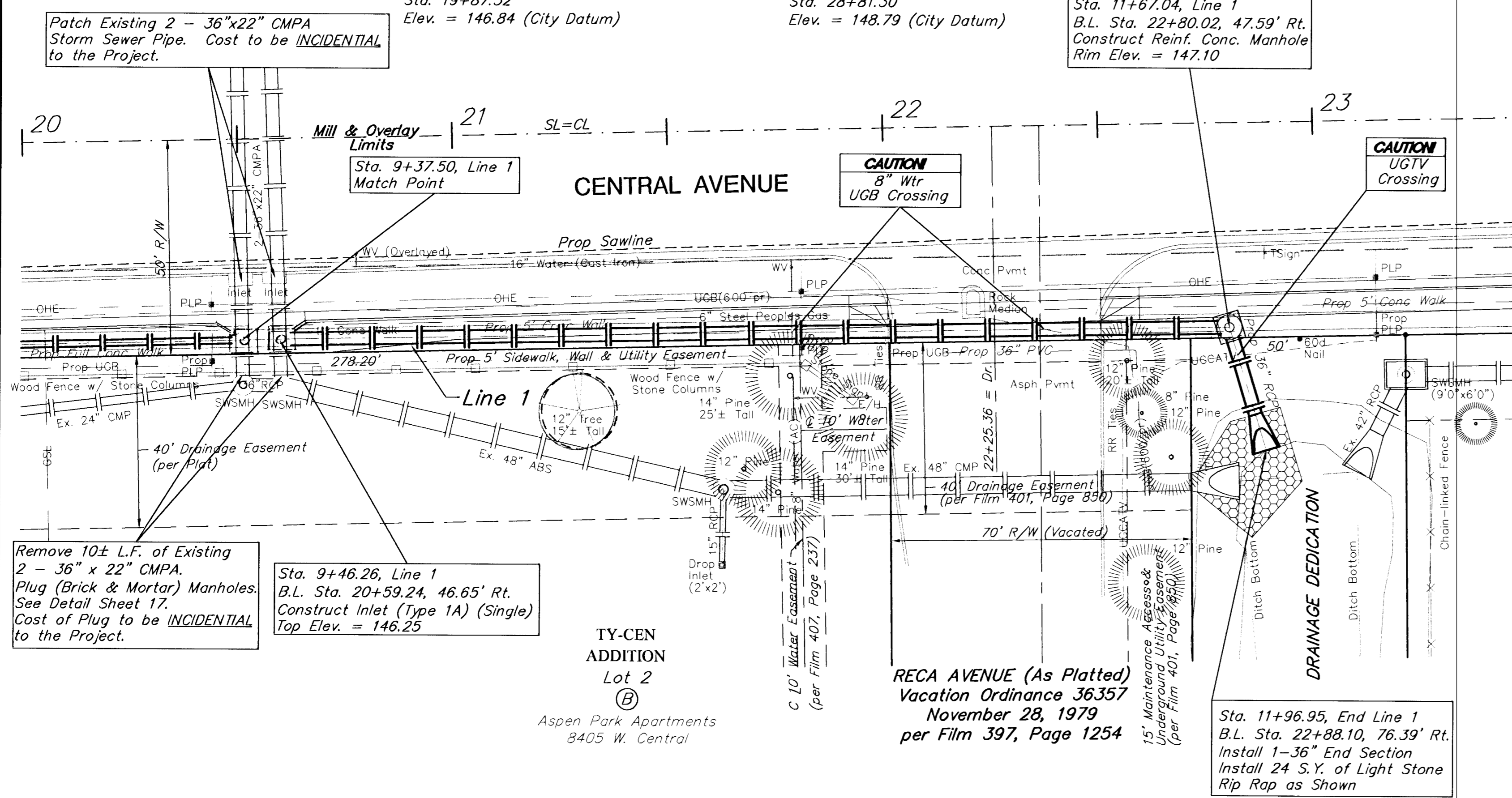


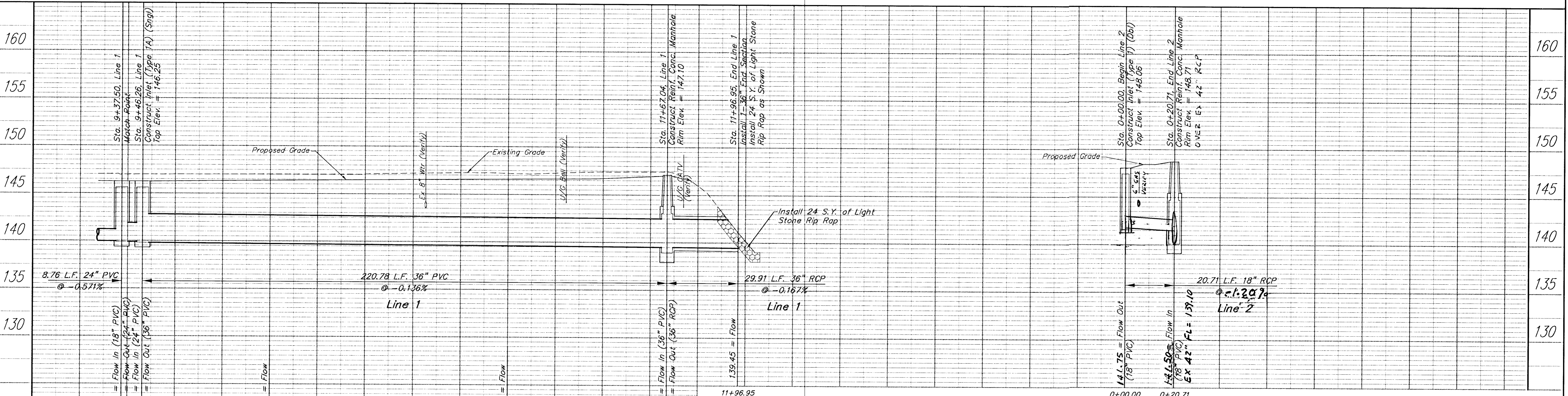
BENCHMARKS:

BM#2 - V-Notch on Back of Walk at SE Corner of Fazoli's Restaurant Parcel, NE of Central Avenue & Tyler Road, 64.89'± North and 987.32'± East of Centerline of Both. Sta. 19+87.32 Elev. = 146.84 (City Datum)

BM#3 - "□" Cut at SE Corner, Lot 4, Tyler Acres 5th Addition, NW of Central Avenue & Socora Lane, 65.10'± North and 34.94'± West of Centerline of Both. Sta. 28+81.30 Elev. = 148.79 (City Datum)



SCALE: 1" = 20'



PROJECT NUMBER City Of Wichita		SHEET NAME SWS03	ENGINEERING DIRECTORY F:CENTRAL/SWS	STREET & STORM WATER SEWER IMPROVEMENTS STORM WATER SEWER LINE 1 & LINE 2 136th STREET WEST - MAPLE TO 1/2 MILE SOUTH		BAUGHMAN COMPANY, P.A. ENGINEERING, SURVEYING, & PLANNING 316-262-7271 • 315 ELLIS • WICHITA, KANSAS 67211	SHEET 15 OF 42
DESIGN JFB/JMN	DRAWN STAFF	APPROVED	DATE FEB 2002	SCALE NOTED	BAUGHMAN NO 99-09-E463		