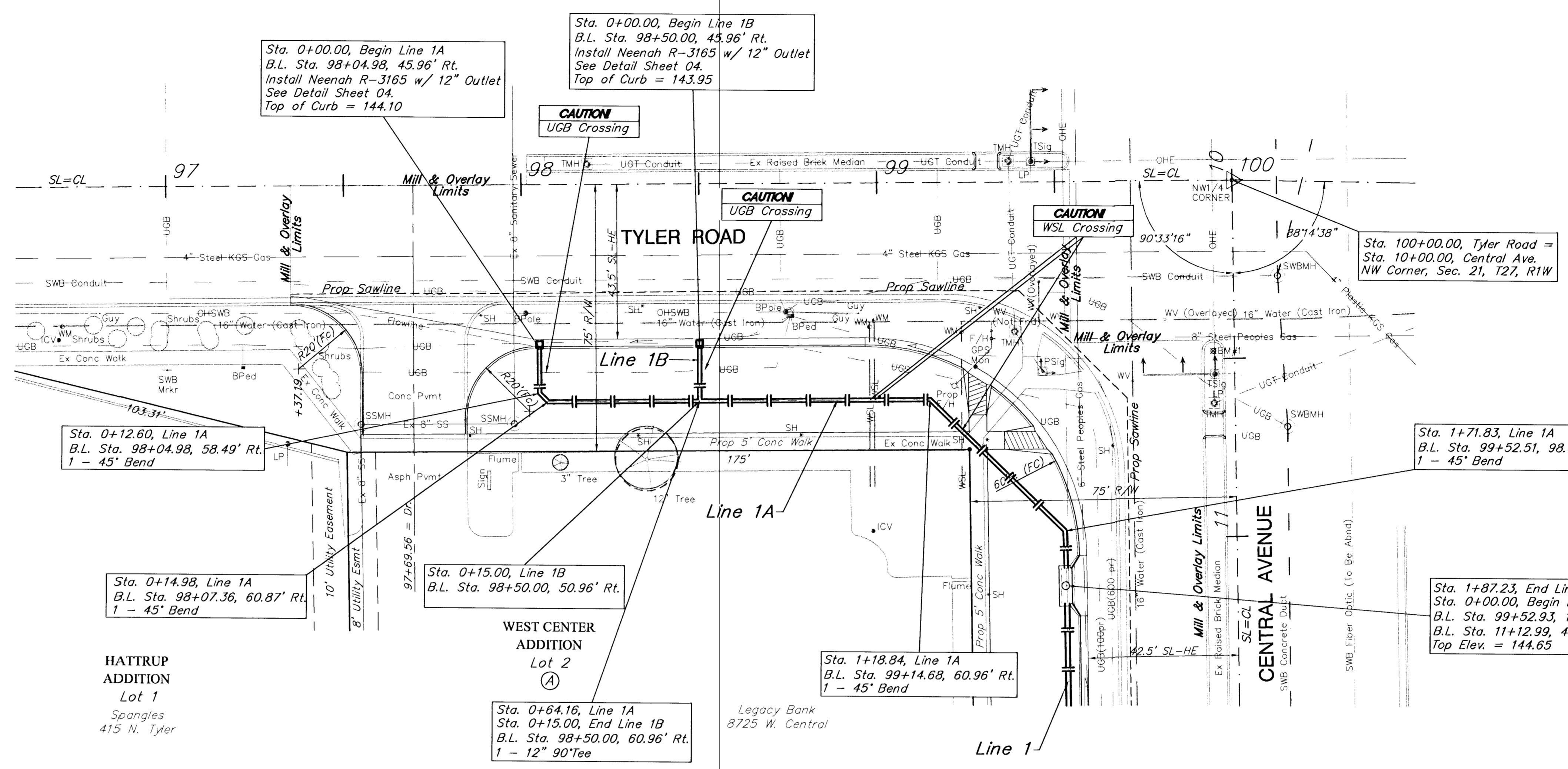


**BENCHMARK:**

BM#1 - "□" Cut at West End of Median, SE of Central Avenue & Tyler Road, 5.92'± South and 47.85'± East of Centerline of Both. Sta. 10+47.85 Elev. = 145.75 (City Datum)

SCALE:  
1" = 20' Horizontal  
1" = 5' Vertical



Sta. 0+00.00, Begin Line 1A  
B.L. Sta. 98+04.98, 45.96' Rt.  
Install Neenah R-3165 w/ 12" Outlet  
See Detail Sheet 04.  
Top of Curb = 144.10

Sta. 0+00.00, Begin Line 1B  
B.L. Sta. 98+50.00, 45.96' Rt.  
Install Neenah R-3165 w/ 12" Outlet  
See Detail Sheet 04.  
Top of Curb = 143.95

Sta. 100+00.00, Tyler Road =  
Sta. 10+00.00, Central Ave.  
NW Corner, Sec. 21, T27, R1W

Sta. 0+12.60, Line 1A  
B.L. Sta. 98+04.98, 58.49' Rt.  
1 - 45° Bend

Sta. 1+71.83, Line 1A  
B.L. Sta. 99+52.51, 98.07' Rt.  
1 - 45° Bend

Sta. 0+14.98, Line 1A  
B.L. Sta. 98+07.36, 60.87' Rt.  
1 - 45° Bend

Sta. 0+15.00, Line 1B  
B.L. Sta. 98+50.00, 50.96' Rt.

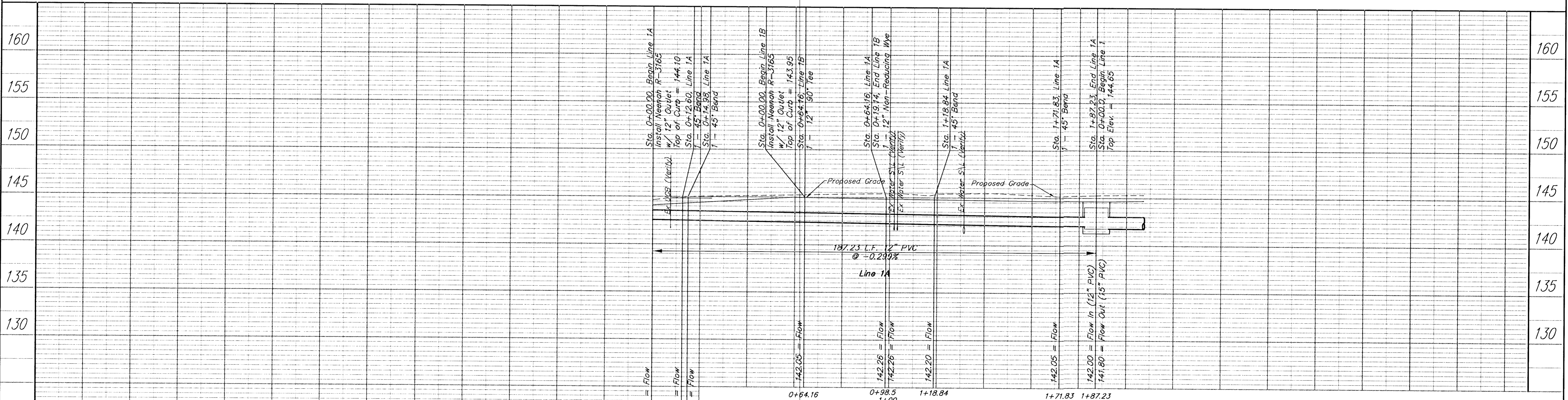
Sta. 1+18.84, Line 1A  
B.L. Sta. 99+14.68, 60.96' Rt.  
1 - 45° Bend

Sta. 1+87.23, End Line 1A  
Sta. 0+00.00, Begin Line 1  
B.L. Sta. 99+52.93, 113.45' Rt. (Tyler Road)  
B.L. Sta. 11+12.99, 48.17' Rt. (Central Ave.)  
Top Elev. = 144.65

HATTRUP  
ADDITION  
Lot 1  
Spangles  
415 N. Tyler

WEST CENTER  
ADDITION  
Lot 2  
A  
Sta. 0+64.16, Line 1A  
Sta. 0+15.00, End Line 1B  
B.L. Sta. 98+50.00, 60.96' Rt.  
1 - 12° 90° Tee

Legacy Bank  
8725 W. Central



Sta. 0+00.00, Begin Line 1A  
Install Neenah R-3165  
w/ 12" Outlet  
Top of Curb = 144.10

Sta. 0+12.60, Line 1A  
B.L. Sta. 98+04.98, 58.49' Rt.  
1 - 45° Bend

Sta. 0+14.98, Line 1A  
B.L. Sta. 98+07.36, 60.87' Rt.  
1 - 45° Bend

Sta. 0+15.00, End Line 1B  
B.L. Sta. 98+50.00, 50.96' Rt.

Sta. 0+64.16, Line 1A  
Sta. 0+15.00, End Line 1B  
B.L. Sta. 98+50.00, 60.96' Rt.  
1 - 12° 90° Tee

Sta. 1+18.84, Line 1A  
B.L. Sta. 99+14.68, 60.96' Rt.  
1 - 45° Bend

Sta. 1+71.83, Line 1A  
B.L. Sta. 99+52.51, 98.07' Rt.  
1 - 45° Bend

Sta. 1+87.23, End Line 1A  
Sta. 0+00.00, Begin Line 1  
B.L. Sta. 99+52.93, 113.45' Rt. (Tyler Road)  
B.L. Sta. 11+12.99, 48.17' Rt. (Central Ave.)  
Top Elev. = 144.65

187.23 L.F. 12" PVC  
@ -0.233%

Line 1A

0+64.16      0+98.5  
1+00      1+18.84      1+71.83      1+87.23

PROJECT NUMBER City of Wichita	SHEET NAME SWS04	ENGINEERING DIRECTORY F/CENTRAL/SWS
DESIGN JFB/JMN	DRAWN STAFF	DATE FEB 2002
APPROVED	SCALE NOTED	BAUGHMAN NO. 99-09-E463

STREET & STORM WATER SEWER IMPROVEMENTS  
**STORM WATER SEWER**  
**LINE 1A, 1B, & 1C**  
CENTRAL AVENUE - TYLER TO WOODCHUCK

**BAUGHMAN COMPANY, P.A.**  
ENGINEERING, SURVEYING, & PLANNING  
316-262-7271 • 315 ELLIS • WICHITA, KANSAS 67211