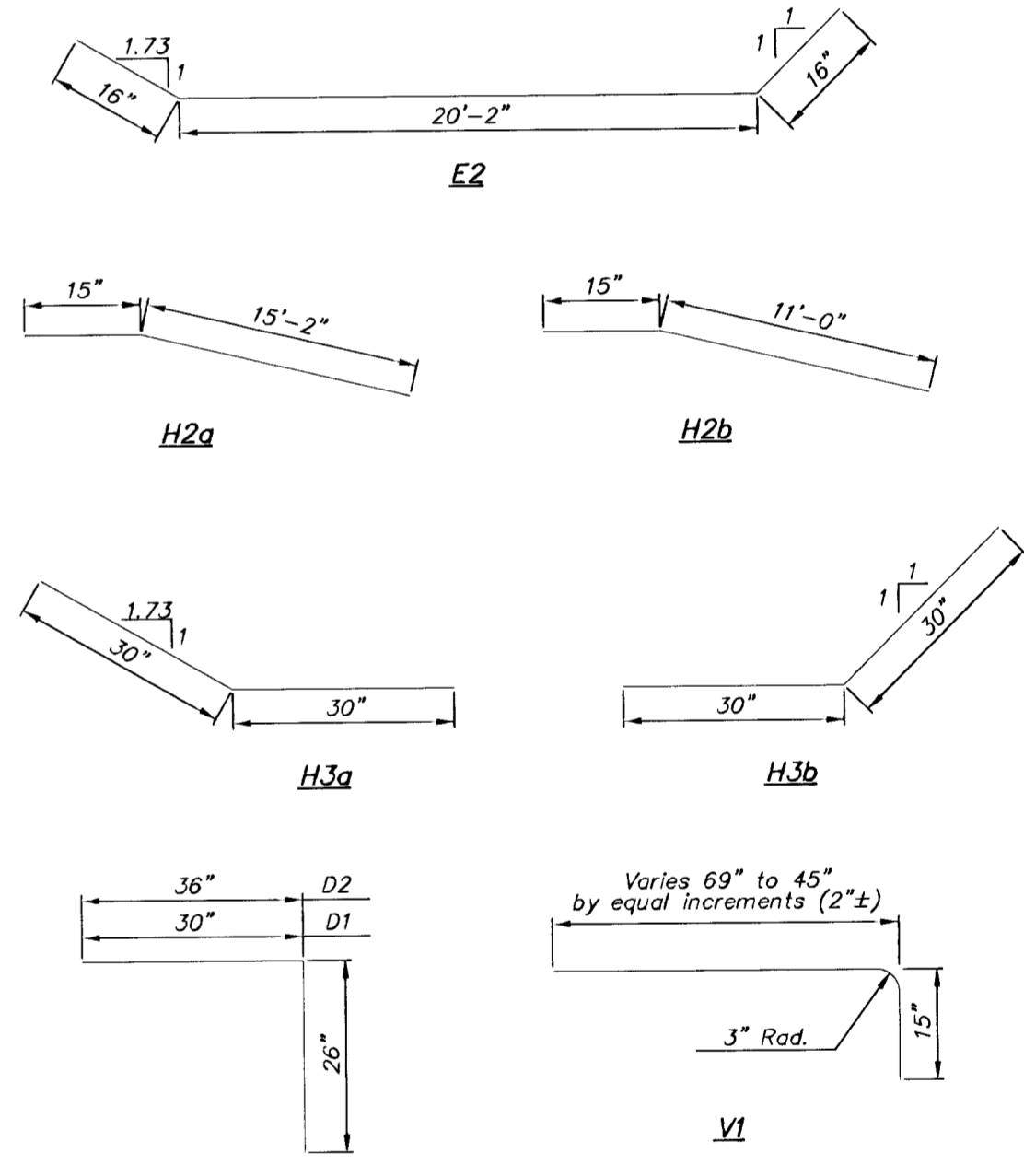
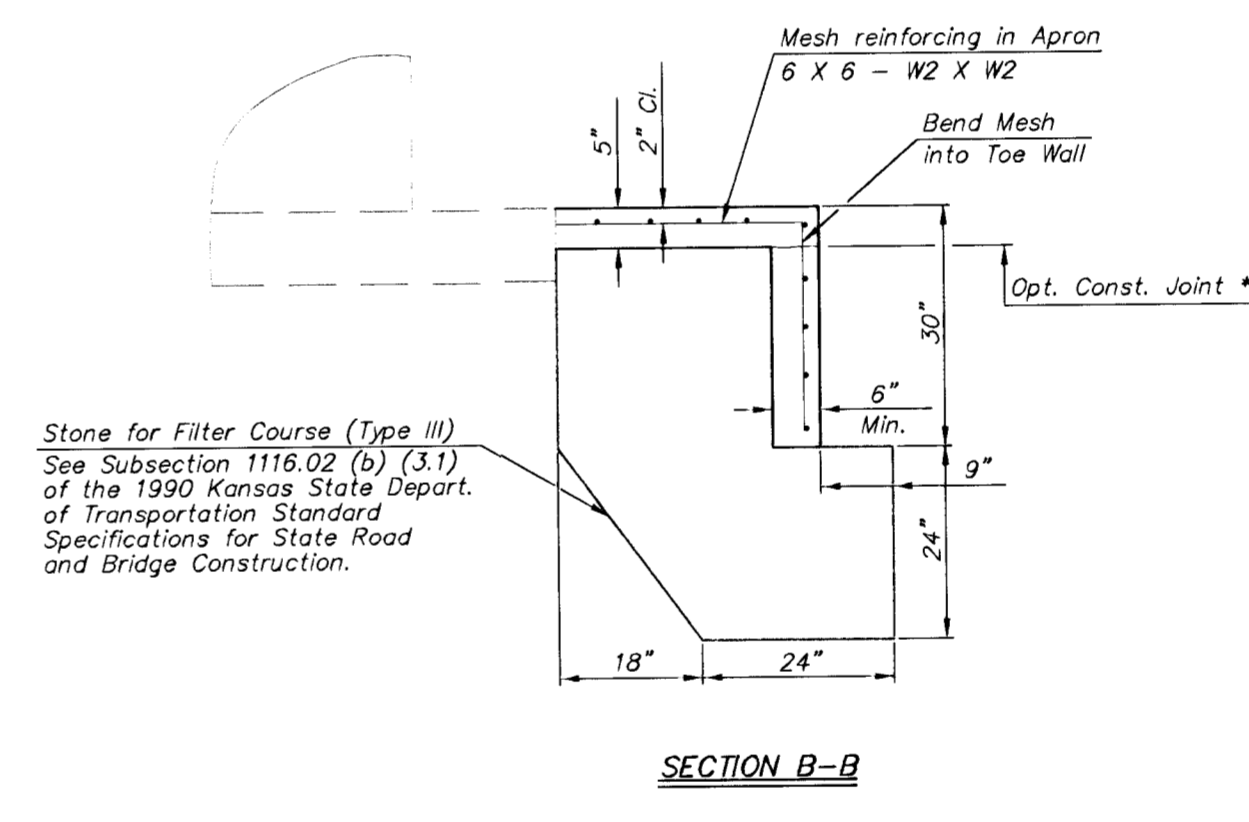
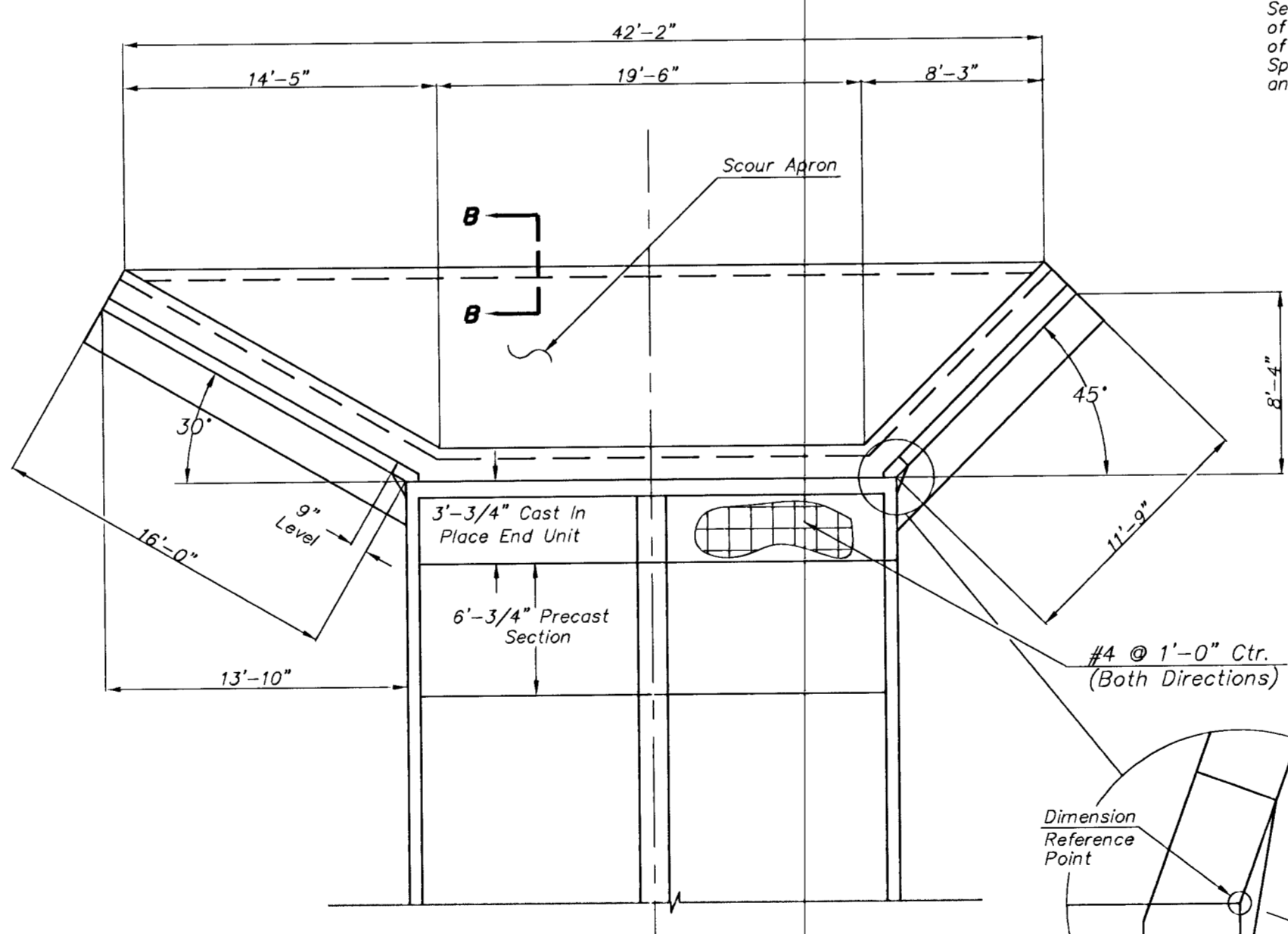
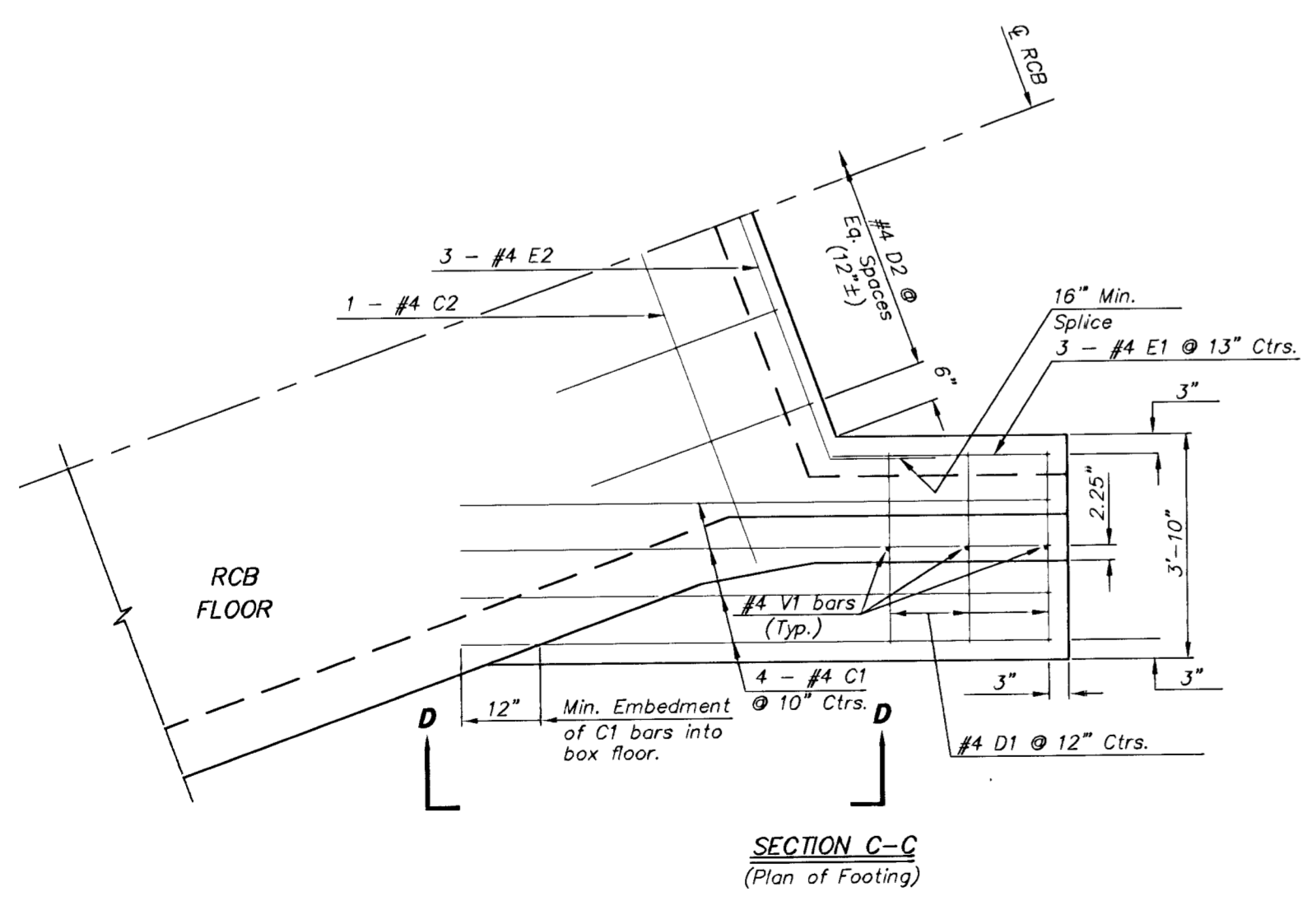
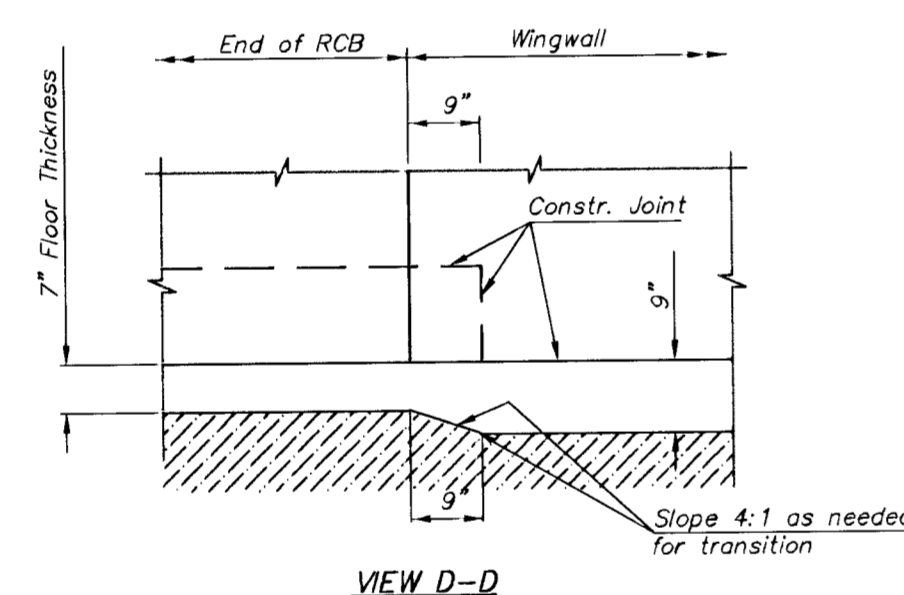


* NOTE: Const. Jt. may be used at Contractor's option when approved by the Engineer. #4 bars or mesh may be spliced thus: Minimum overlap shall be 15". No increase in quantities to cost shall be allowed when Contractor elects this option.



BENDING DIAGRAM (All dimensions are out to out of bars.)

1. All Existing Concrete Surfaces Adjacent to New Concrete Shall be Thoroughly Cleaned by Brushing, and Soaked with Water immediately Prior to Placing New Concrete.
2. All Exposed Concrete Edges Shall be Beveled 3/4".
3. All Reinforcing Steel to have Minimum 1-1/2" Concrete Cover.

For Information Only
Cost of Concrete, Steel, Etc. to be INCIDENTAL to the Lump Sum Bid Item "Double 10' X 4' RCBC".

WINGWALL QUANTITIES (One End Only)	
Class AAA Concrete:	7.27 cu. yards
Wingwalls	5.58 cu. yards
Apron	5.69 cu. yards
Cast-in-Place RCB	1060 lbs.
Reinforcing Steel	81 lbs.
Welded Wire Fabric	

FOR INFORMATION ONLY

NOTE: Reinforcing Bar List is for both wings at one end of box only. *** See Bending Diagram

No.	#4 C1a	#4 C1b	#4 D1	#4 E1a	#4 E1b	#4 C2	#4 D2	#4 V1	#4 E2	#4 H1a	#4 H1b	#4 H2a	#4 H2b	#4 H3a	#4 H3b	#4 H4
Length	17'-8"	14'-0"	5'-8"	15'-9"	11'-6"	22'-6"	5'-2"	***	22'-2"	14'-1"	9'-10"	16'-5"	12'-3"	5'-0"	5'-0"	3'-6"

PROJECT NUMBER 472-76-245-83324	SHEET NAME Wing Detail	ENGINEERING DIRECTORY F:\Hydraulic\KTA
DESIGN TPV/JFB	DRAWN TPV	APPROVED JFB
DATE FEB 2001	SCALE NONE	BAUGHMAN NO 99-09-E543

CAPITAL IMPROVEMENT PROJECT
WINGWALL DETAILS
HYDRAULIC AVENUE PAVING - INCIDENTAL DRAINAGE IMPROVEMENTS - PHASE 1

BAUGHMAN COMPANY, P.A.
ENGINEERING, SURVEYING, & PLANNING
316-282-7271 • 315 ELLIS • WICHITA, KANSAS 67211