

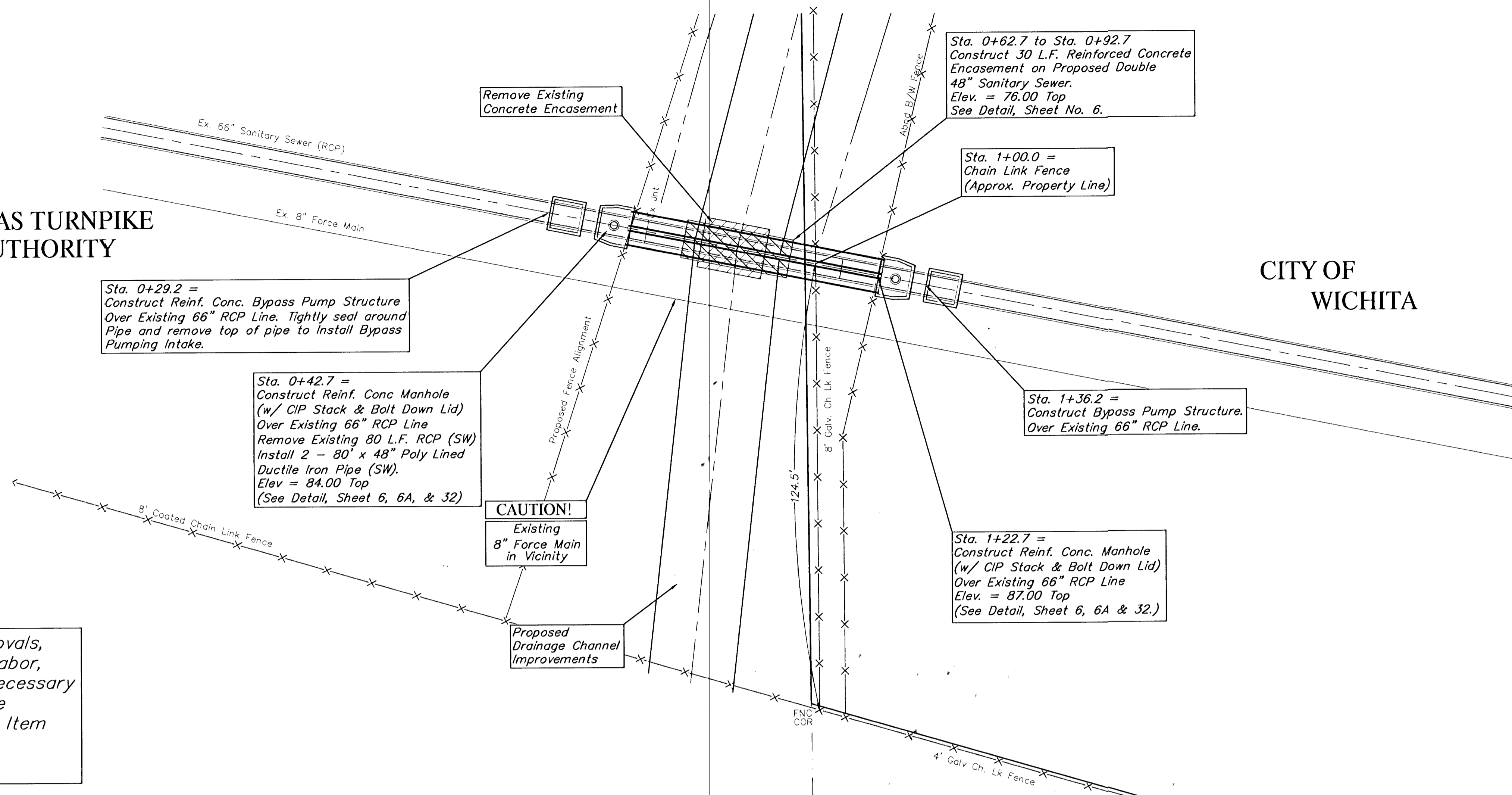
**BENCHMARK:**

BM #1 - "u" Cut on North End of East Headwall of Double 4' x 4' R. C. Box Culvert Located 400± North of Proposed Crossing. (Turnpike Sta. 4691+30)  
Elev. = 84.60 City Datum

SCALE:  
1" = 20' HORIZONTAL  
1" = 5' VERTICAL

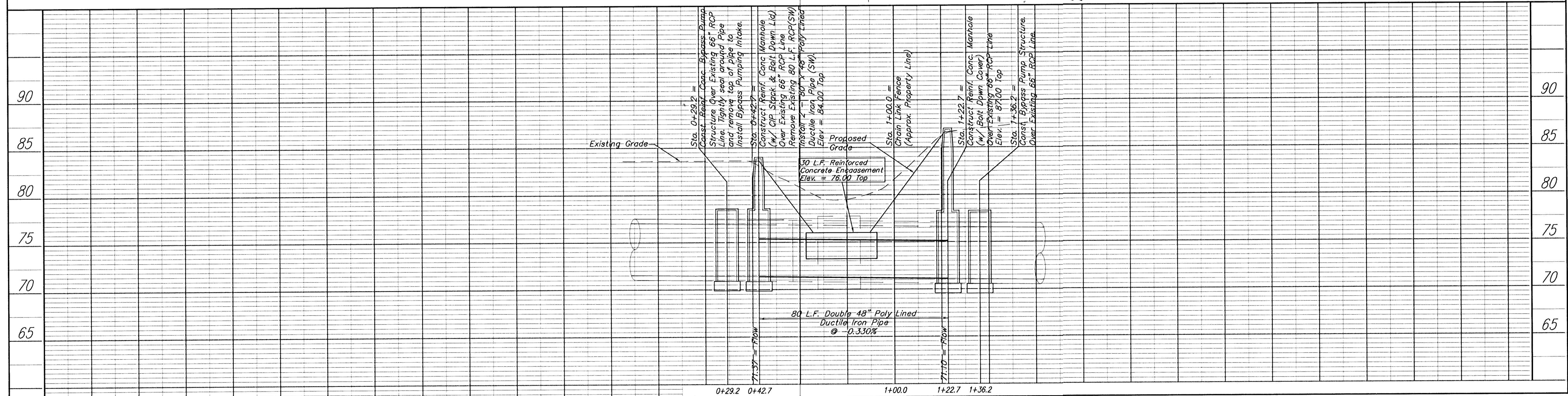
KANSAS TURNPIKE  
AUTHORITY

CITY OF  
WICHITA



Cost of Structures, Piping, Removals, Encasement, Bypass Pumping, Labor, Excavation and all Incidentals Necessary to Lower the Sewer Line shall be INCLUDED in the Lump Sum Bid Item EXISTING 66" SANITARY SEWER LOWERING".

**NOTES:**  
Sewer Lowering Alternate No. 1 Shown on this page. Other Lowering Options detailed in following pages  
Contact Jim Lane or Tim Hopwood @ 529-9984  
A minimum of 10 days prior to Sewer Lowering.



PROJECT NUMBER 472-76-245-83324		SHEET NAME ss lowering		ENGINEERING DIRECTORY F:\Hydraulic\KTA	
DESIGN JFB/KK/JA	DRAWN KWR	APPROVED JFB	DATE FEB 2001	SCALE NOTED	BAUGHMAN NO 99-09-E453

CAPITAL IMPROVEMENTS PROJECT  
**66" Sanitary Sewer Lowering System**  
HYDRAULIC AVENUE PAVING - INCIDENTAL DRAINAGE IMPROVEMENTS - PHASE 1

**BAUGHMAN COMPANY, P.A.**  
ENGINEERING, SURVEYING, & PLANNING  
316-262-7271 • 315 ELLIS • WICHITA, KANSAS 67211

SHEET  
5  
OF  
36

F:\EN\Hydraulic\KTA\ss\_lowering.dwg Thu Feb 15 21:41:14 2001