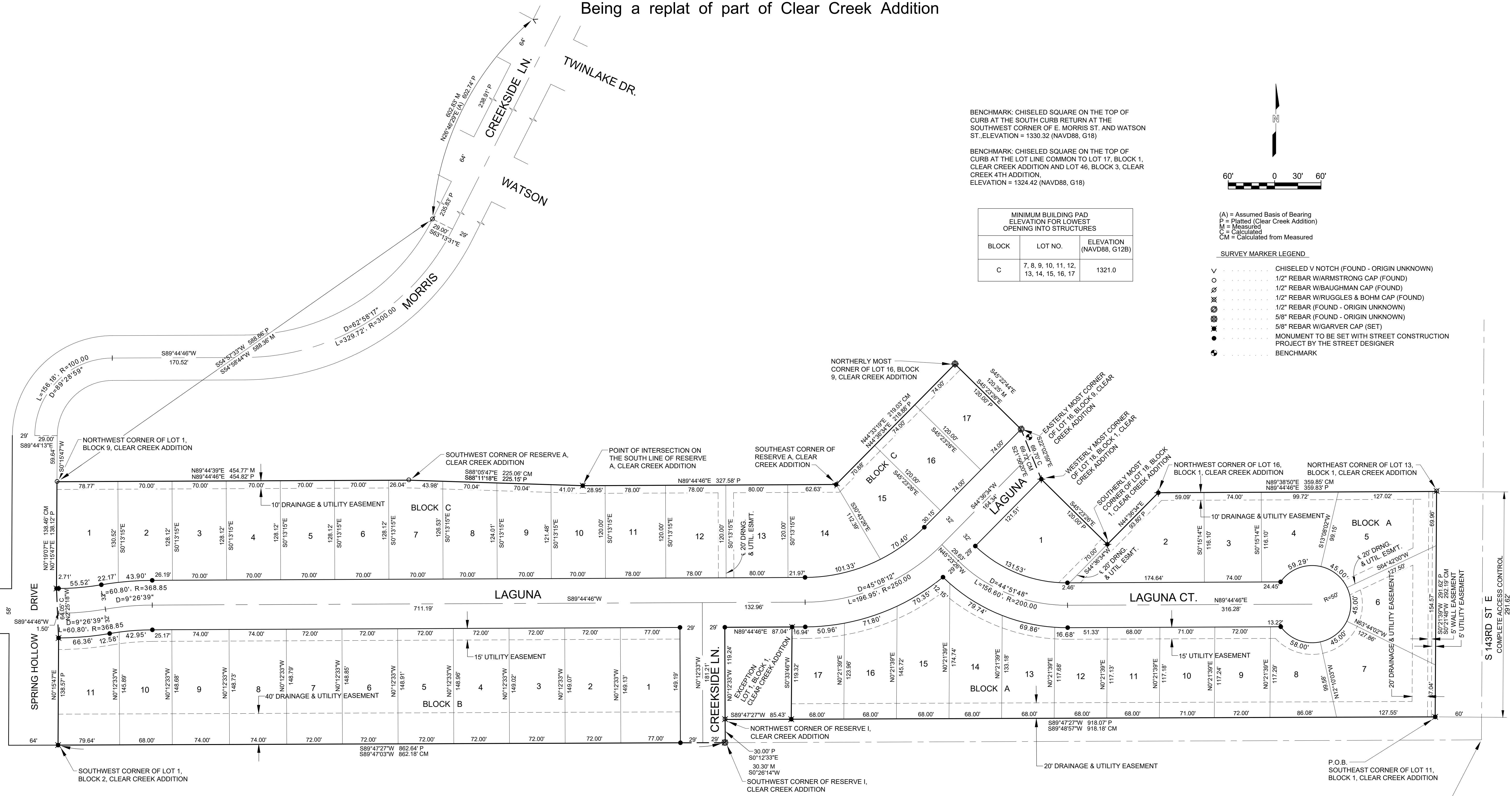


CLEAR CREEK 4TH ADDITION

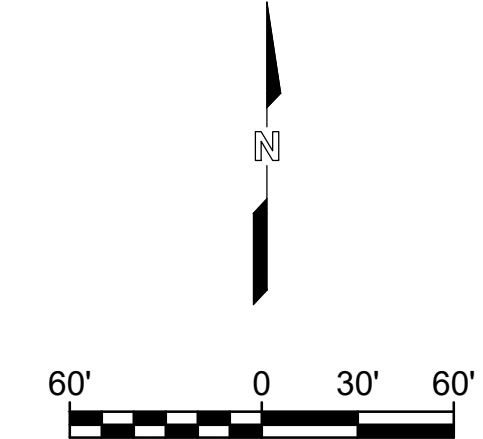
Wichita, Sedgwick County, Kansas.
Being a replat of part of Clear Creek Addition



BENCHMARK: CHISELED SQUARE ON THE TOP OF CURB AT THE SOUTH CURB RETURN AT THE SOUTHWEST CORNER OF E. MORRIS ST. AND WATSON ST. ELEVATION = 1330.32 (NAVD88, G18)

BENCHMARK: CHISELED SQUARE ON THE TOP OF CURB AT THE LOT LINE COMMON TO LOT 17, BLOCK 1, CLEAR CREEK ADDITION AND LOT 46, BLOCK 3, CLEAR CREEK 4TH ADDITION. ELEVATION = 1324.42 (NAVD88, G18)

MINIMUM BUILDING PAD ELEVATION FOR LOWEST OPENING INTO STRUCTURES		
BLOCK	LOT NO.	ELEVATION (NAVD88, G12B)
C	7, 8, 9, 10, 11, 12, 13, 14, 15, 16, 17	1321.0



- (A) = Assumed Basis of Bearing
P = Platted (Clear Creek Addition)
M = Measured
C = Calculated
CM = Calculated from Measured
- SURVEY MARKER LEGEND**
- ∇ CHISELED V NOTCH (FOUND - ORIGIN UNKNOWN)
 - 1/2" REBAR W/ARMSTRONG CAP (FOUND)
 - 1/2" REBAR W/BAUGHMAN CAP (FOUND)
 - ⊗ 1/2" REBAR W/RUGGLES & BOHM CAP (FOUND)
 - ⊙ 1/2" REBAR (FOUND - ORIGIN UNKNOWN)
 - ⊗ 5/8" REBAR (FOUND - ORIGIN UNKNOWN)
 - ⊙ 5/8" REBAR W/GARVER CAP (SET)
 - MONUMENT TO BE SET WITH STREET CONSTRUCTION PROJECT BY THE STREET DESIGNER
 - ⊕ BENCHMARK