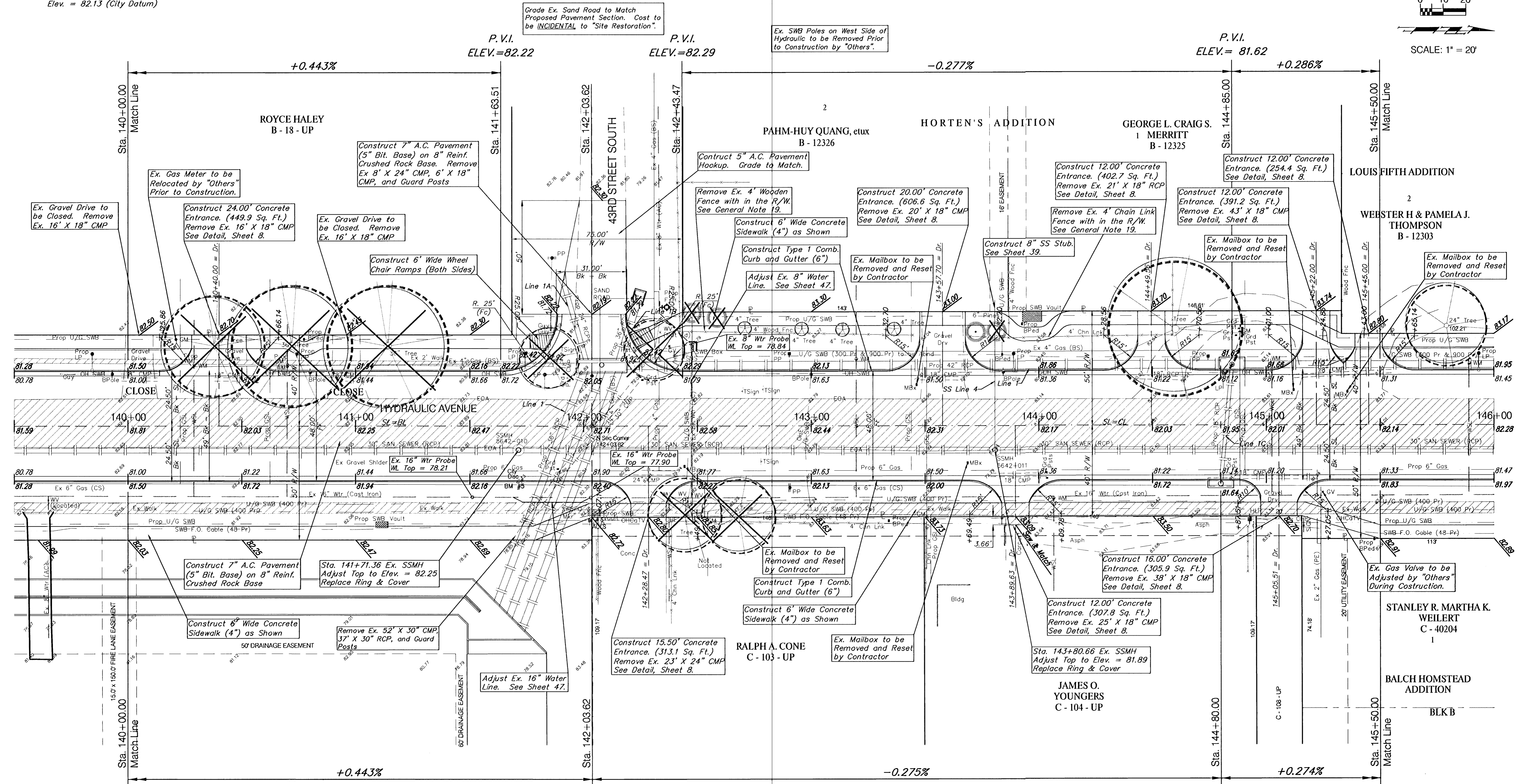
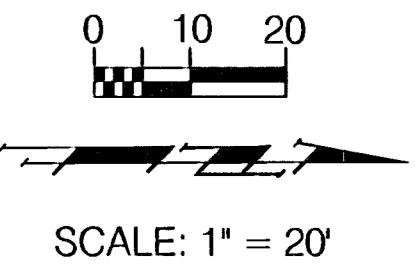
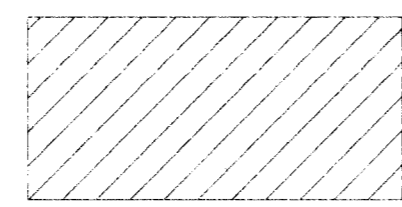


**BENCHMARK:**

BM #5 - City of Wichita Bench Mark Disc, 35' South and 25' East of Centerlines Hydraulic and 43rd St. South.  
Sta. 141+72.24, 25' Rt.  
Elev. = 82.13 (City Datum)

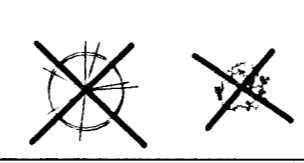


**Note:**  
Pavement, Sidewalks, and Etc. To Be Removed Are Indicated By:



P.V.I.  
ELEV.=82.40

**Note:**  
Trees/Shrubs to be removed are marked thus:



PROJECT NUMBER 472-76-245-83324		SHEET NAME PAV05		ENGINEERING DIRECTORY F:\Eng\Hydraulic\pav	
DESIGN JFB	DRAWN STAFF	APPROVED JFB	DATE Sept. 2002	SCALE Noted	BAUGHMAN NO 99-09-E450

CAPITAL IMPROVEMENT PROJECT  
**HYDRAULIC AVENUE**  
47th STREET to MACARTHUR ROAD  
PAVING PLAN - Sta. 140+00.00 - 145+50.00

	<b>BAUGHMAN COMPANY, P.A.</b>	SHEET 15 OF 102
	ENGINEERING, SURVEYING, & PLANNING 316-262-7271 • 316 ELLIS • WICHITA, KANSAS 67211	