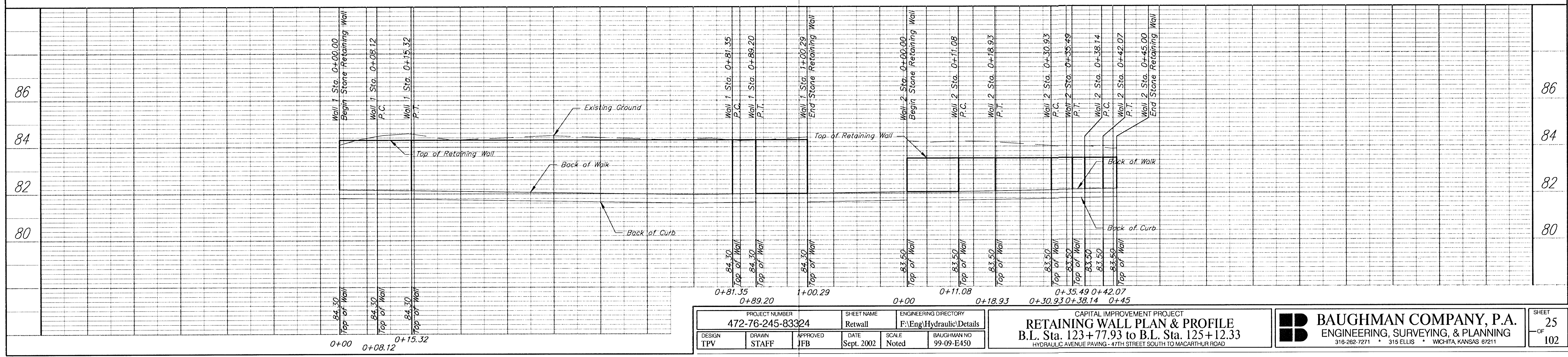
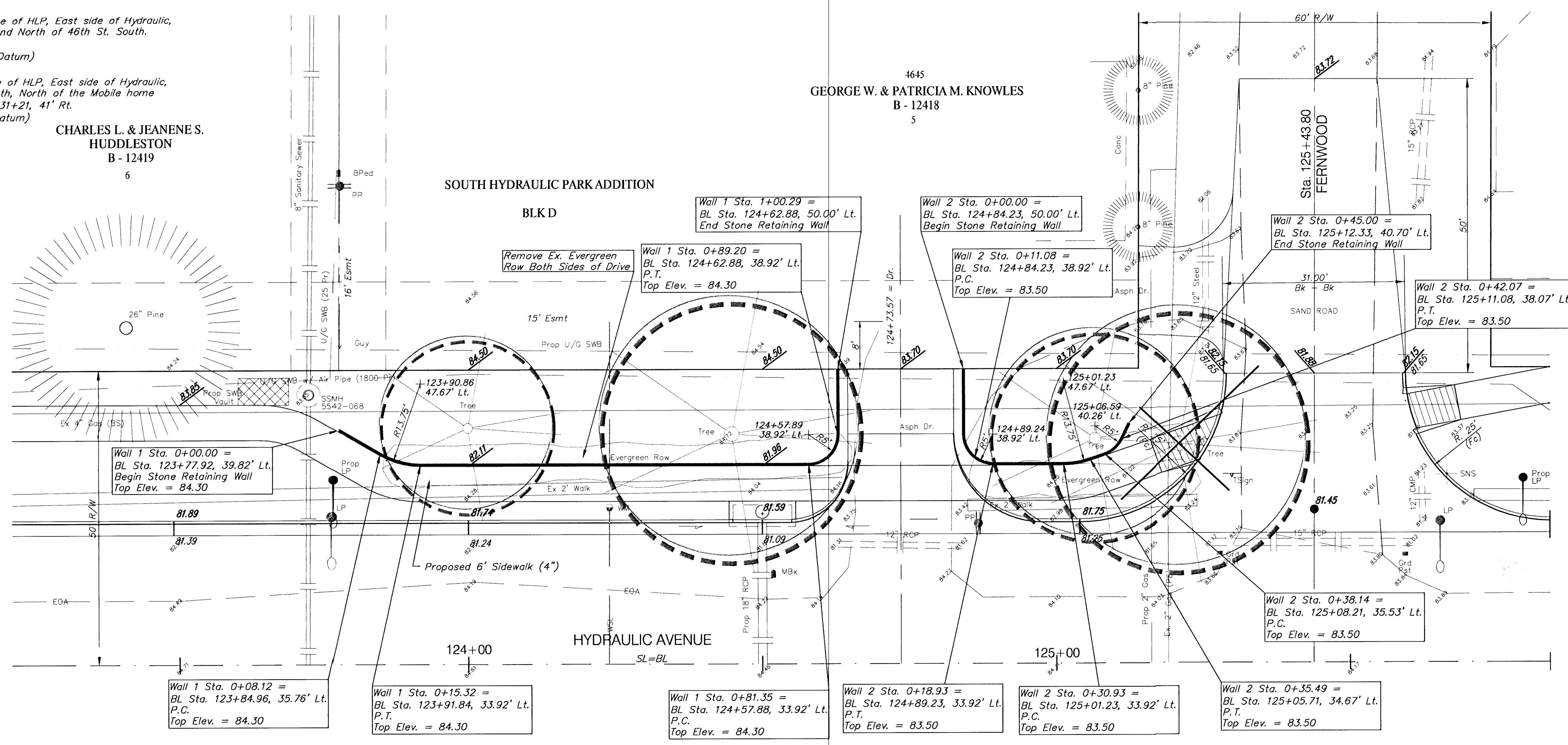
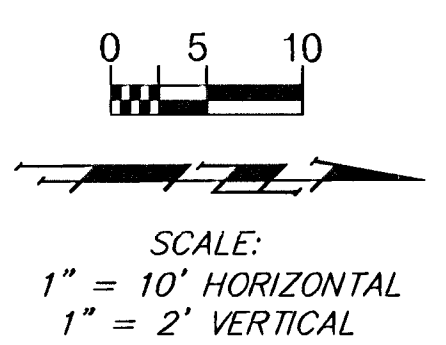


BENCHMARK:

BM #2 - RR Spike in West face of HLP, East side of Hydraulic,
South of Fernwood and North of 46th St. South.
Sta. 122+83, 41' Rt.
Elev. = 85.33 (City Datum)

BM #3 - RR Spike in West face of HLP, East side of Hydraulic,
North of 45th St South, North of the Mobile home
Park Entrance. Sta. 131+21, 41' Rt.
Elev. = 82.72 (City Datum)

CHARLES L. & JEANENE S.
HUDDLESTON
B - 12419
6



PROJECT NUMBER 472-76-245-83324		SHEET NAME Retwall		ENGINEERING DIRECTORY F:\Eng\Hydraulic\Details		CAPITAL IMPROVEMENT PROJECT		BAUGHMAN COMPANY, P.A. ENGINEERING, SURVEYING, & PLANNING 316-282-7271 • 315 ELLIS • WICHITA, KANSAS 67211	SHEET 25 OF 102
DESIGN TPV	DRAWN STAFF	APPROVED JFB	DATE Sept. 2002	SCALE Noted	BAUGHMAN NO 99-09-E450	RETAINING WALL PLAN & PROFILE B.L. Sta. 123+77.93 to B.L. Sta. 125+12.33 HYDRAULIC AVENUE PAVING - 47TH STREET SOUTH TO MACARTHUR ROAD			