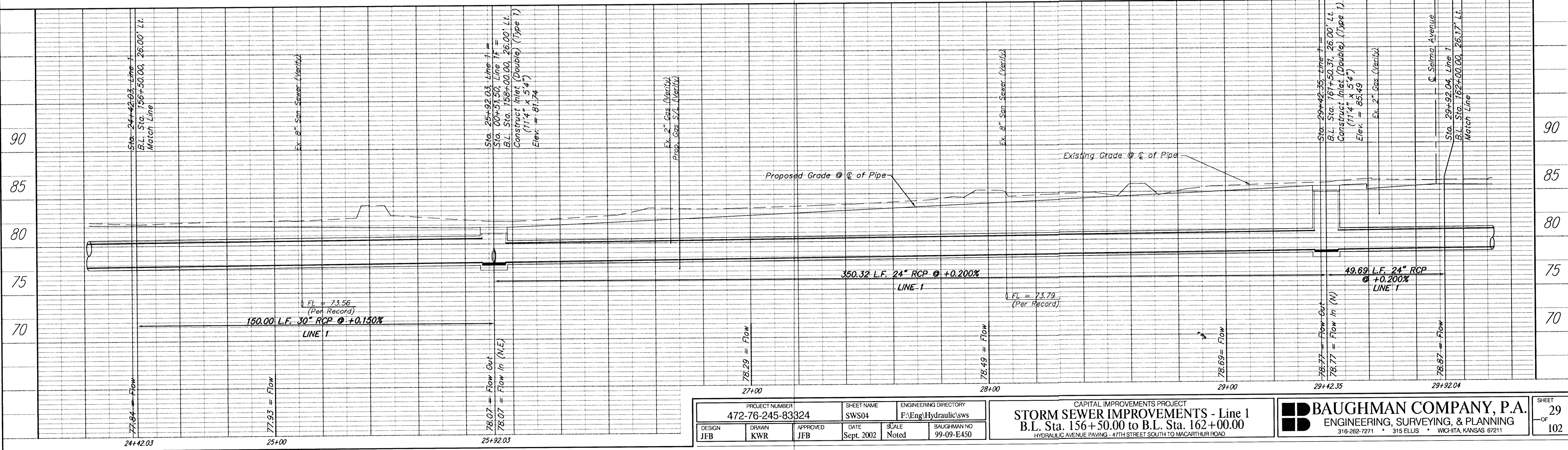
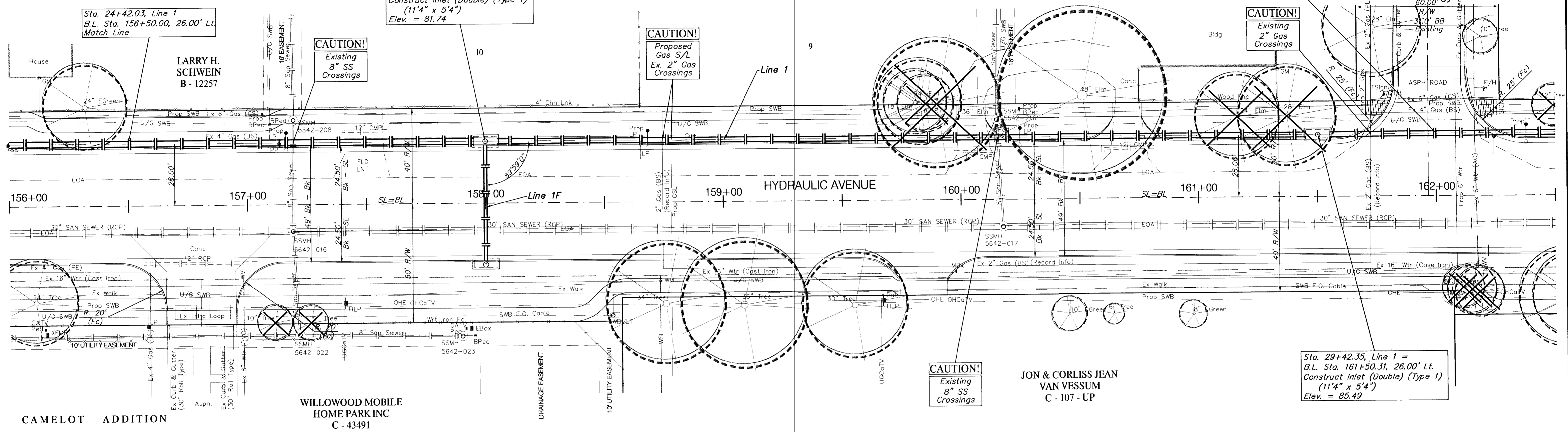


BENCHMARK:

BM #7 - RR Spike in West face of HLP, East side of Hydraulic, South of Alta Street. Sta. 155+07, 41' Rt. Elev. = 86.12 (City Datum)

BM #8 - RR Spike in West face of HLP, East side of Hydraulic, at the Centerline of Selma St. Sta. 162+06, 41' Rt. Elev. = 89.66 (City Datum)

SCALE:
1" = 20' HORIZONTAL
1" = 5' VERTICAL



PROJECT NUMBER 472-76-245-83324		SHEET NAME SWS04		ENGINEERING DIRECTORY F:Eng/Hydraulic/SWS	
DESIGN JFB	DRAWN KWR	APPROVED JFB	DATE Sept. 2002	SCALE Noted	BAUGHMAN NO 99-09-E450
CAPITAL IMPROVEMENTS PROJECT STORM SEWER IMPROVEMENTS - Line 1 B.L. Sta. 156+50.00 to B.L. Sta. 162+00.00 HYDRAULIC AVENUE PAVING - 47TH STREET SOUTH TO MACARTHUR ROAD					
BAUGHMAN COMPANY, P.A. ENGINEERING, SURVEYING, & PLANNING 316-262-7271 • 315 ELLIS • WICHITA, KANSAS 67211					SHEET 29 OF 102