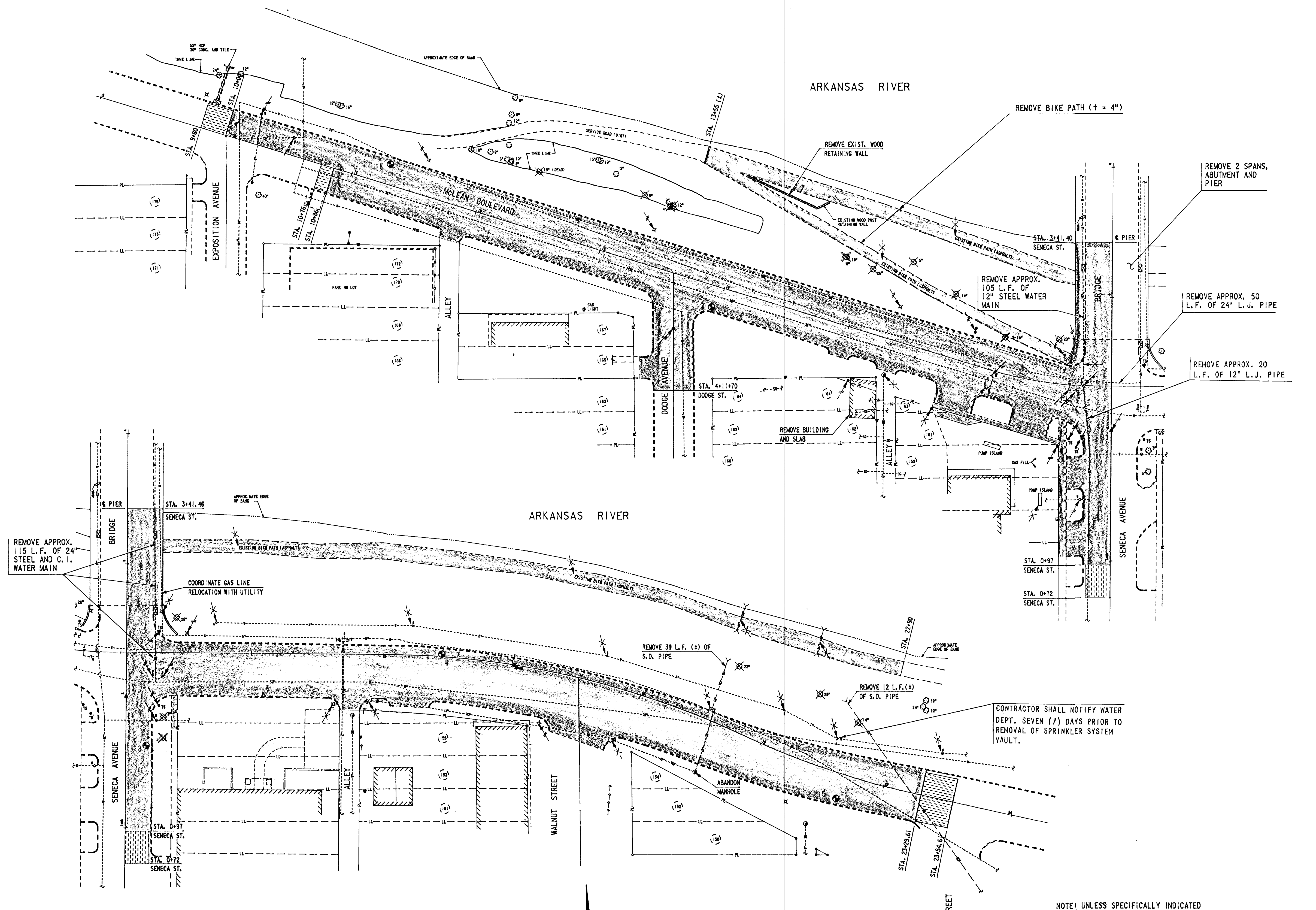


**LEGEND**

EXISTING	DESCRIPTION
⊙	MANHOLE
⊙	TELEPHONE MANHOLE
SS	SANITARY SEWER SECTION LINE
LL	LOT LINE
PL	PROPERTY LINE
•	PROPERTY PIN (FOUND)
•	PROPERTY CORNER
△	SURVEY MONUMENT
▲	THIMBLE WITH BAR
G	GAS LINE
W	WATER LINE
SD	STORM DRAIN LINE
CMP	CORRUGATED METAL PIPE
USP	UNDERGROUND POWER LINE
UST	UNDERGROUND TELEPHONE LINE
UNC	UNDERGROUND CABLE
UNK	UNKNOWN UNDERGROUND LINE
⊕	FIRE HYDRANT
⊙ W	WATER METER
⊕ W	WATER VALVE
⊕ G	GAS METER
⊕ G	GAS VALVE
⊕	SPRINKLER HEAD AND VALVE BOX
⊕ MB	MAIL BOX
⊕	BUSINESS SIGN
⊕ GP	GUARD POST
⊕	UTILITY POLE
⊕	STREET LIGHT
⊕	ANCHOR OR GUY WIRE
⊕	WIRE FENCE
⊕	CHAIN LINK FENCE
⊕	WOOD FENCE
⊕	STRUCTURE
---	EXIST. BACK OF CURB
---	BACK OF CURB, EDGE OF PAVEMENT
---	EDGE OF WATER OR FLOWLINE
⊕	BUSH, SHRUB
⊕ 12"	TREE (SIZED)
⊕	CURB OR AREA INLET
⊕	TRAFFIC SIGNAL
⊕	LOT NUMBER
⊕	PAVEMENT CLASSIFICATION BORING



REMOVE APPROX. 115 L.F. OF 24" STEEL AND C.I. WATER MAIN

CONTRACTOR SHALL NOTIFY WATER DEPT. SEVEN (7) DAYS PRIOR TO REMOVAL OF SPRINKLER SYSTEM VAULT.

LOCATION	DESCRIPTION
1	3 3/4" ASPHALT OVER 7 1/4" CONCRETE
2	4 1/2" ASPHALT OVER 6 1/2" CONCRETE
3	2 1/2" ASPHALT OVER 14 1/2" CONCRETE
4	3" ASPHALT OVER 6" CONCRETE
5	3" ASPHALT OVER 0" CONCRETE

\* LOCATIONS ARE APPROXIMATE. SEE SUPPLEMENTAL SPECIFICATIONS FOR FULL REPORT.

**REMOVAL PLAN**  
SCALE: 1" = 40'

**REMOVAL KEY:**

↖	REMOVE
↗	REGRADE
↔	REGRADE/RELOCATE BY OTHERS
⊕	REMOVE TREE, BUSH, SHRUB, ETC.
⊕	REMOVE PAVEMENT, WALK, DRIVE, ETC.
⊕	ASPHALT COLD MILLING

NOTE: UNLESS SPECIFICALLY INDICATED ALL REMOVAL ITEMS ARE INCLUDED IN THE CLEARING AND RIGHT-OF-WAY BID ITEM. REUSE MURDOCK VALVES.

CITY OF WICHITA PROJECT NO. 472-76-81199-000-000-001

REVISION	DATE	BY

WICHITA, KANSAS  
McLEAN AT SENECA INTERSECTION IMPROVEMENTS  
REMOVAL PLAN AND LEGEND

DESIGN JMO	DRAWN KWD	DATE OCT., 1983
		FILE NO. 82-324A
		SHEET NO. 2 OF 37

Q511C102, 10438234AC4.DGN BORDER A 12 MAY 83