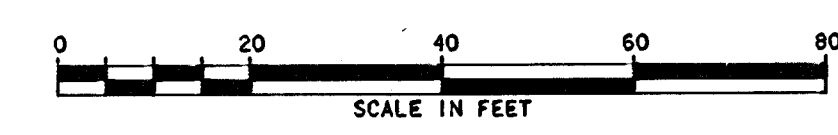
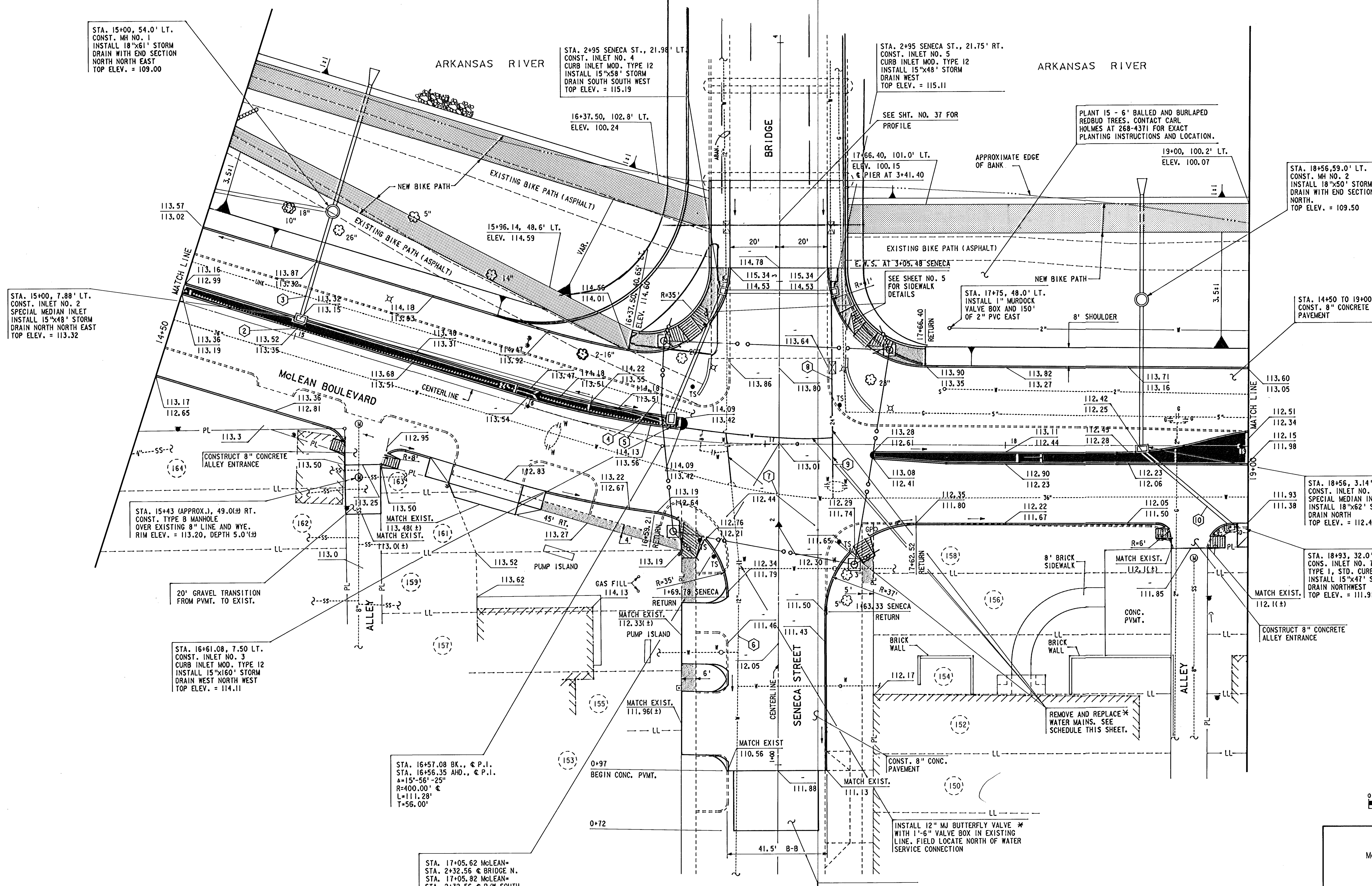


TRAFFIC SIGNAL LEGEND

- SERVICE BOX
- 3" CONDUIT

NOTE: TRAFFIC SIGNALIZATION TO BE COORDINATED WITH CITY OF WICHITA TRAFFIC ENGINEERING.



WICHITA, KANSAS
 McLEAN AT SENECA INTERSECTION IMPROVEMENTS
 PLAN
 (STATION 14+50 TO STATION 19+00)

WATER MAIN FITTINGS SCHEDULE

ITEM	SIZE	NO.	WEIGHT (LIN TONS)	TOTAL WEIGHT (LIN TONS)
FLANGED BASE	24" F.J.	2	0.51	1.02
90° BEND	-	-	-	-
TEE	24"x24"x24" M.J.	2	0.91	1.82
REDUCER	24"x12" M.J.	1	0.28	0.28
TOTAL				3.12

WATER MAIN RELOCATION SCHEDULE *

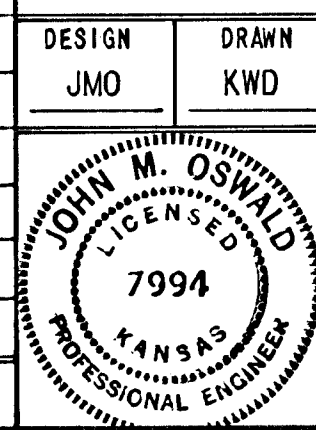
SIZE	LOCATION	LENGTH
24"	STA. 2+22 TO STA. 2+98, SENECA	76'
24"	STA. 16+73 TO STA. 17+23, McLEAN	60'
12"	STA. 2+19 TO STA. 2+37, SENECA	18'

*NOTE: REPLACEMENT LINE TO BE DUCTILE IRON MECHANICAL JOINT PIPE. APPROXIMATE LENGTHS ARE SHOWN WITH ACTUAL LENGTHS TO TO BE FIELD DETERMINED. ALL METAL PIPE AND FITTINGS SHALL BE WRAPPED WITH 8mm POLYETHYLENE AND TAPED AND SAND ENCASED A MIN. OF 6" ON ALL SIDES. ALL CONNECTIONS TO EXISTING PIPES SHALL BE MADE WITH FLEXIBLE COUPLINGS. FLEXIBLE COUPLING ADAPTERS WILL BE REQUIRED FOR ALL CONNECTIONS TO CONCRETE PIPE. SEE DETAIL ON SHEET NO. 5.

COLD MILL APPROX. 2" AND INSTALL 100 S.Y. OF ASPHALT SURFACE TO MATCH EXISTING TO NEW SECTION

CITY OF WICHITA PROJECT NO. 472-76-81199-000-000-001

REVISION	DATE	BY



WILSON & COMPANY
 ENGINEERS & ARCHITECTS
 WICHITA - KANSAS

DESIGN: JMO
 DRAWN: KWD
 DATE: OCT 1983
 FILE NO. 82-324A
 SHEET NO. 7 OF 37

05-15-102, 104182324AC2, DGN BORDER A