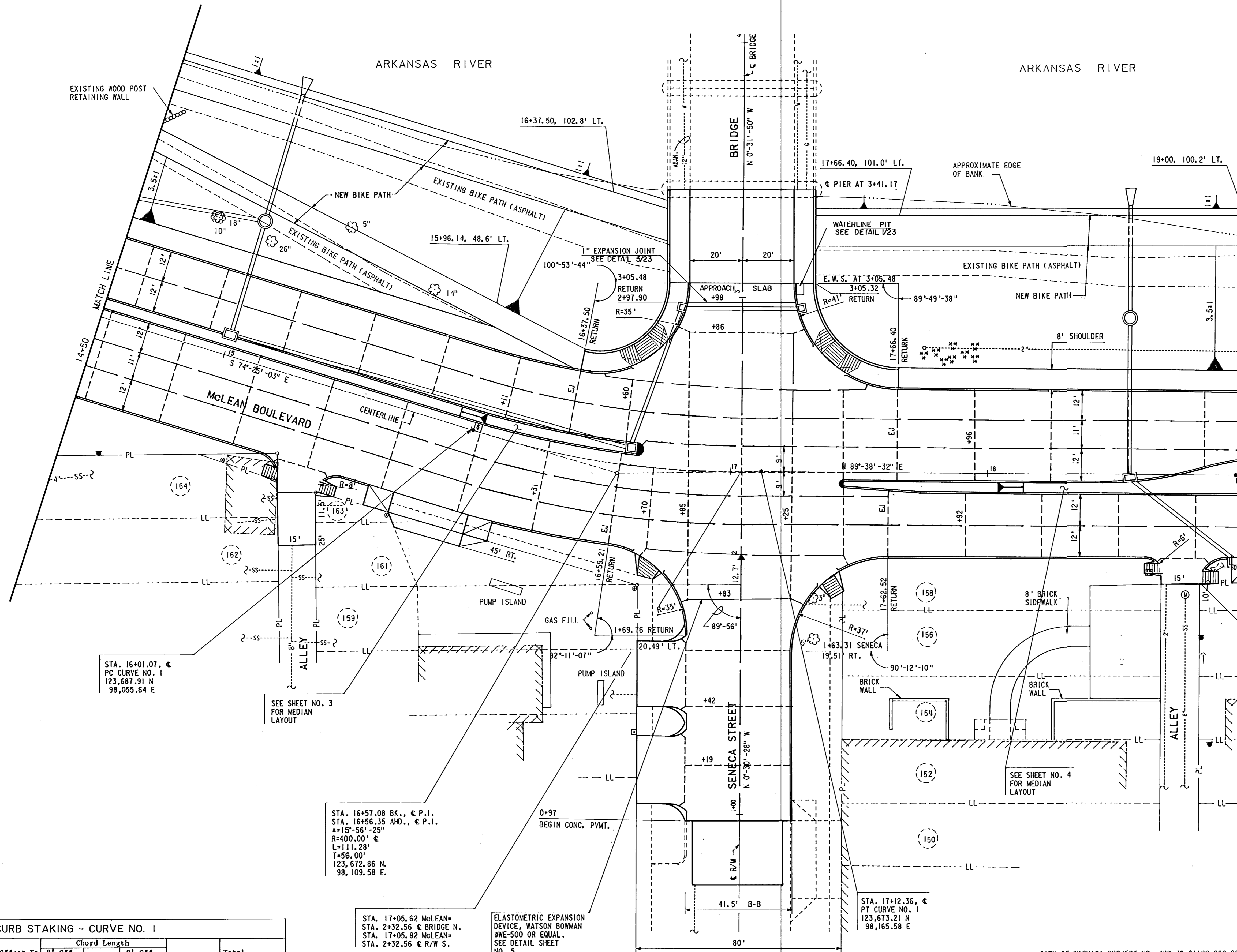


- BM-1 "C" CUT IN TOP OF CURB AT E. RETURN ON McLEAN BLVD. AT ALLEY BETWEEN SENECA ST. AND DODGE AVE. ELEV. = 113.79
- TBM-2 BRASS DISC STAMPED "CITY OF WICHITA - ELEV. 1302.30" AT THE S.E. END OF THE S.E. WINGWALL OF THE SENECA ST. BRIDGE ELEV. = 115.01
- TBM-5 IRON IN THIMBLE AT C. OF SENECA ST. AND CENTRAL AVE. ELEV. = 113.23



STA. 16+01.07, C  
PC CURVE NO. 1  
123,687.91 N  
98,055.64 E

STA. 16+57.08 BK., C P.I.  
STA. 16+56.35 AHD., C P.I.  
A=15°-56'-25"  
R=400.00' C  
L=111.28'  
T=56.00'  
123,672.86 N  
98,109.58 E

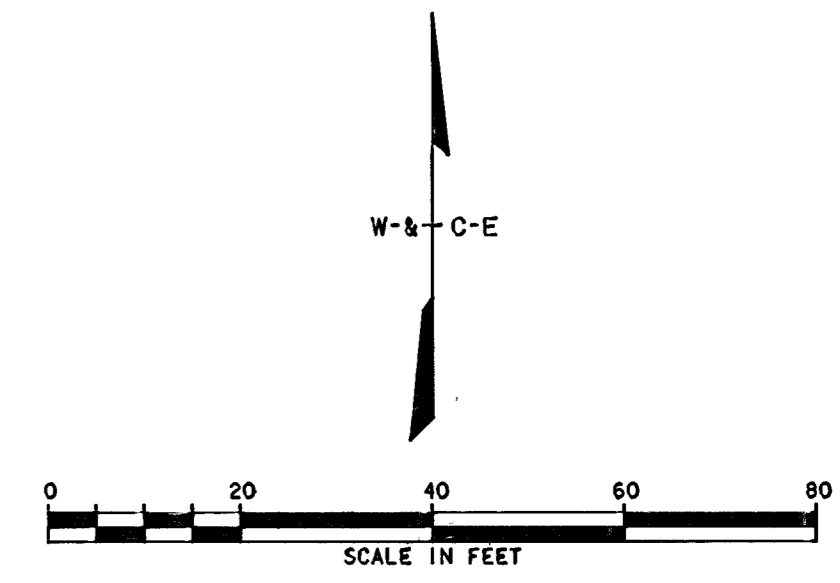
STA. 17+05.62 McLEAN+  
STA. 2+32.56 C BRIDGE N.  
STA. 17+05.82 McLEAN+  
STA. 2+32.56 C R/W S.

ELASTOMETRIC EXPANSION  
DEVICE, WATSON BOWMAN  
#WE-500 OR EQUAL.  
SEE DETAIL SHEET  
NO. 5

STA. 17+12.36, C  
PT CURVE NO. 1  
123,673.21 N  
98,165.58 E

STA. 18+97.86, C  
PC CURVE NO. 2  
123,674.37 N  
98,351.09 E

18+85.9 (A)  
43.2' (A) RT.

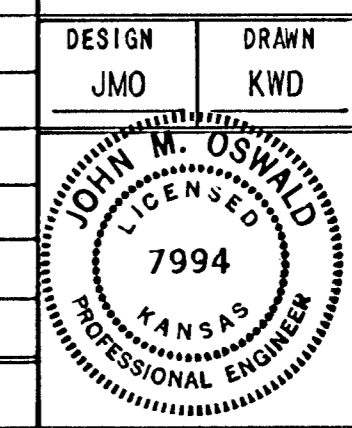


CURB STAKING - CURVE NO. 1

R=400.00' Δ/2=79°-58'-13" CL Stationing	Arc Length	Offset To CL Dist.	Chord Length			Deflection	Total Deflection
			8' Off Lt. Curb	CL	8' Off Rt. Curb		
16 + 01.07 PC	23.93'	40'	21.53'	23.92'	26.32'	1°-42'-49"	1°-42'-49"
16 + 25	12.50'	40'	11.25'	12.50'	13.75'	0°-53'-43"	2°-36'-32"
16 + 37.50	12.50'	40'	11.25'	12.50'	13.75'	0°-53'-43"	3°-30'-15"
16 + 50	9.21'	40'	8.29'	9.21'	10.13'	0°-39'-35"	4°-09'-49"
16 + 59.21	6.41'	40'	5.77'	6.41'	7.05'	0°-27'-33"	4°-37'-22"
16 + 65.62	9.38'	40'	8.44'	9.38'	10.32'	0°-40'-18"	5°-17'-41"
17 + 00	25.00'	40'	22.50'	25.00'	27.50'	1°-47'-26"	7°-05'-07"
17 + 05.62	5.62'	40'	5.06'	5.62'	6.18'	0°-24'-09"	7°-29'-16"
17 + 12.36 PT	6.74'	40'	6.06'	6.74'	7.41'	0°-28'-57"	7°-58'-13"

CITY OF WICHITA PROJECT NO. 472-76-81199-000-001

REVISION	DATE	BY



**WILSON & COMPANY**  
ENGINEERS & ARCHITECTS  
WICHITA - KANSAS

DESIGN: JMO  
DRAWN: KWD  
DATE: OCT 1983  
FILE NO.: 82-324A  
SHEET NO.: 13  
OF 37

CS1-L 102, 104182324ACT .DGN BORDER A