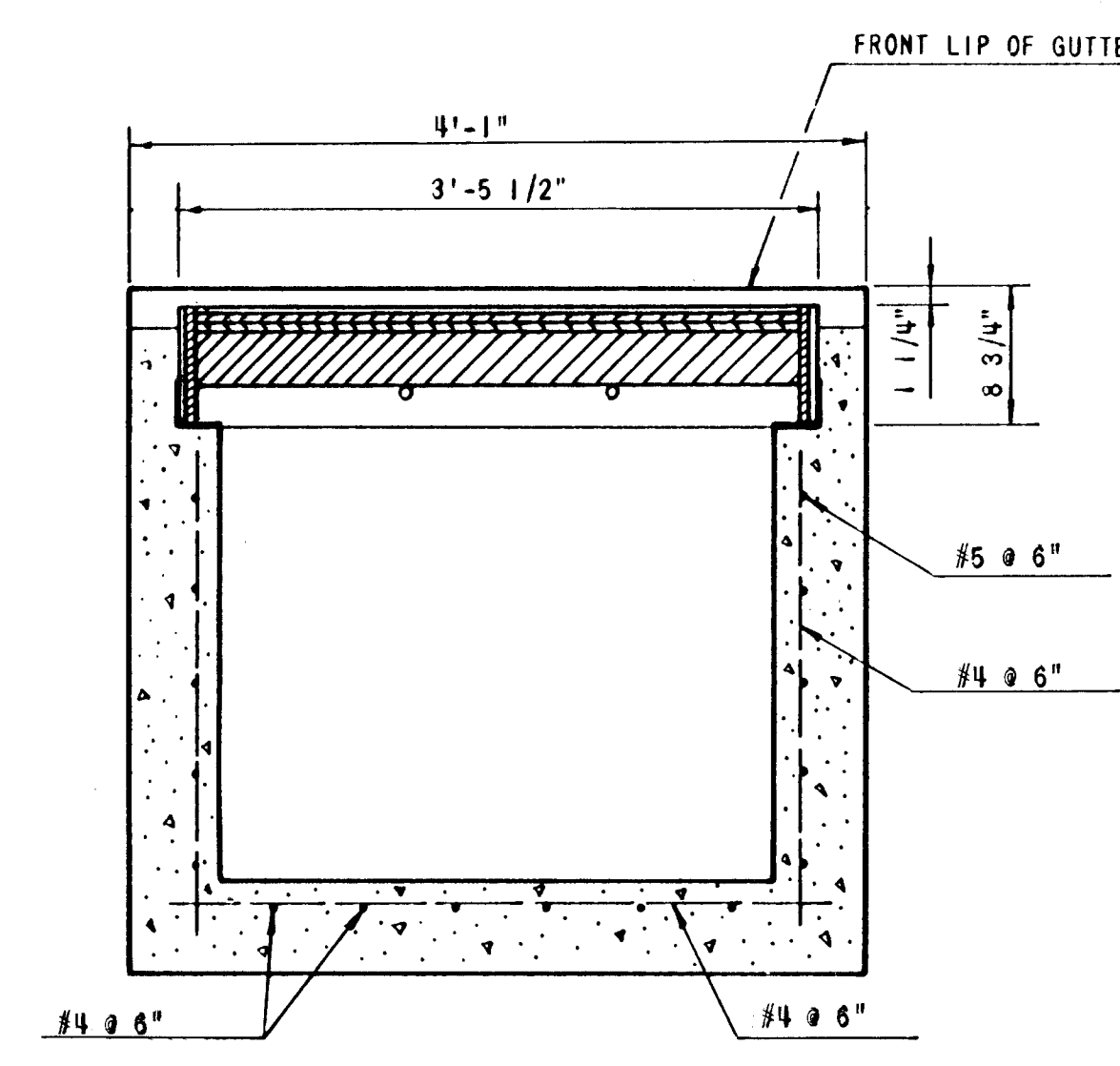
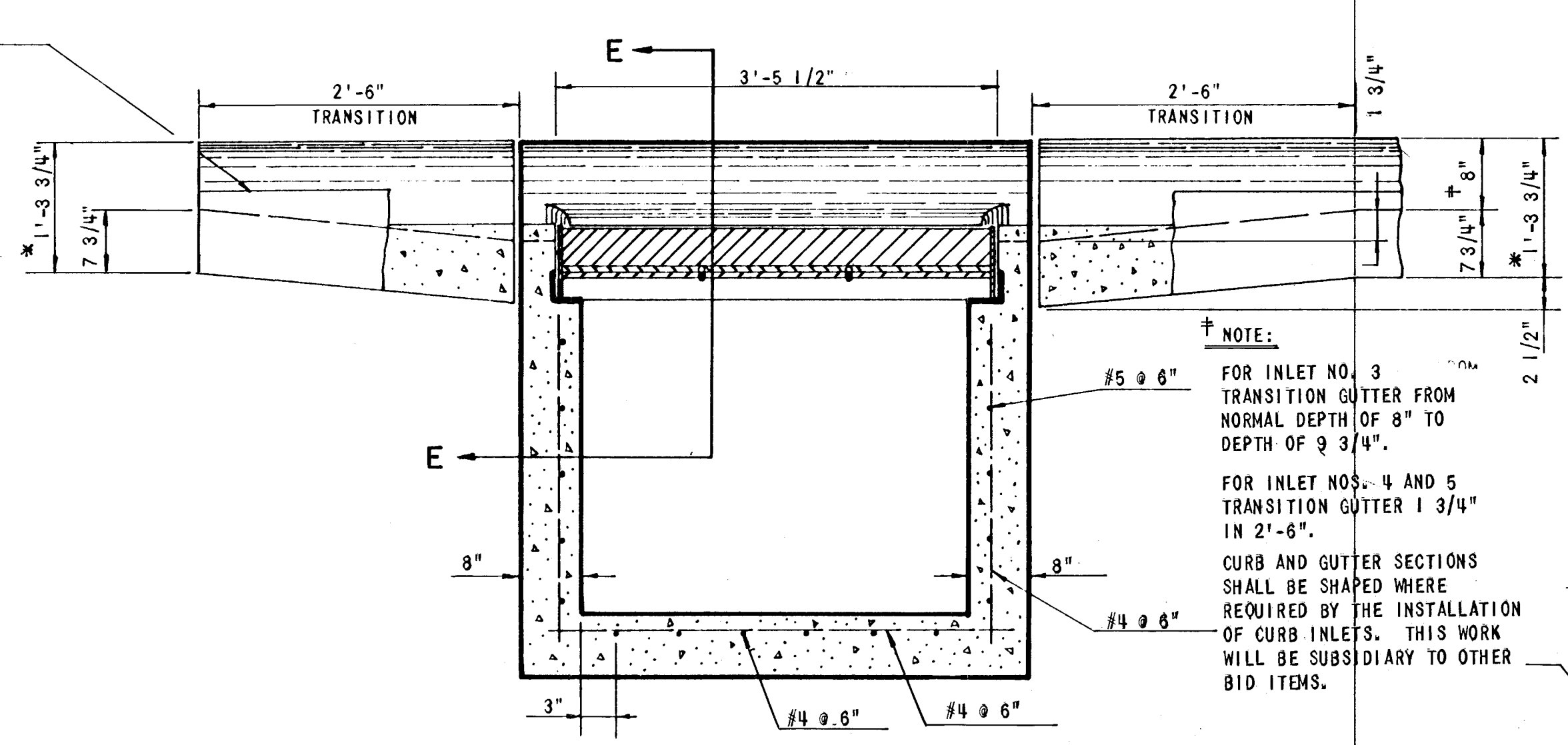


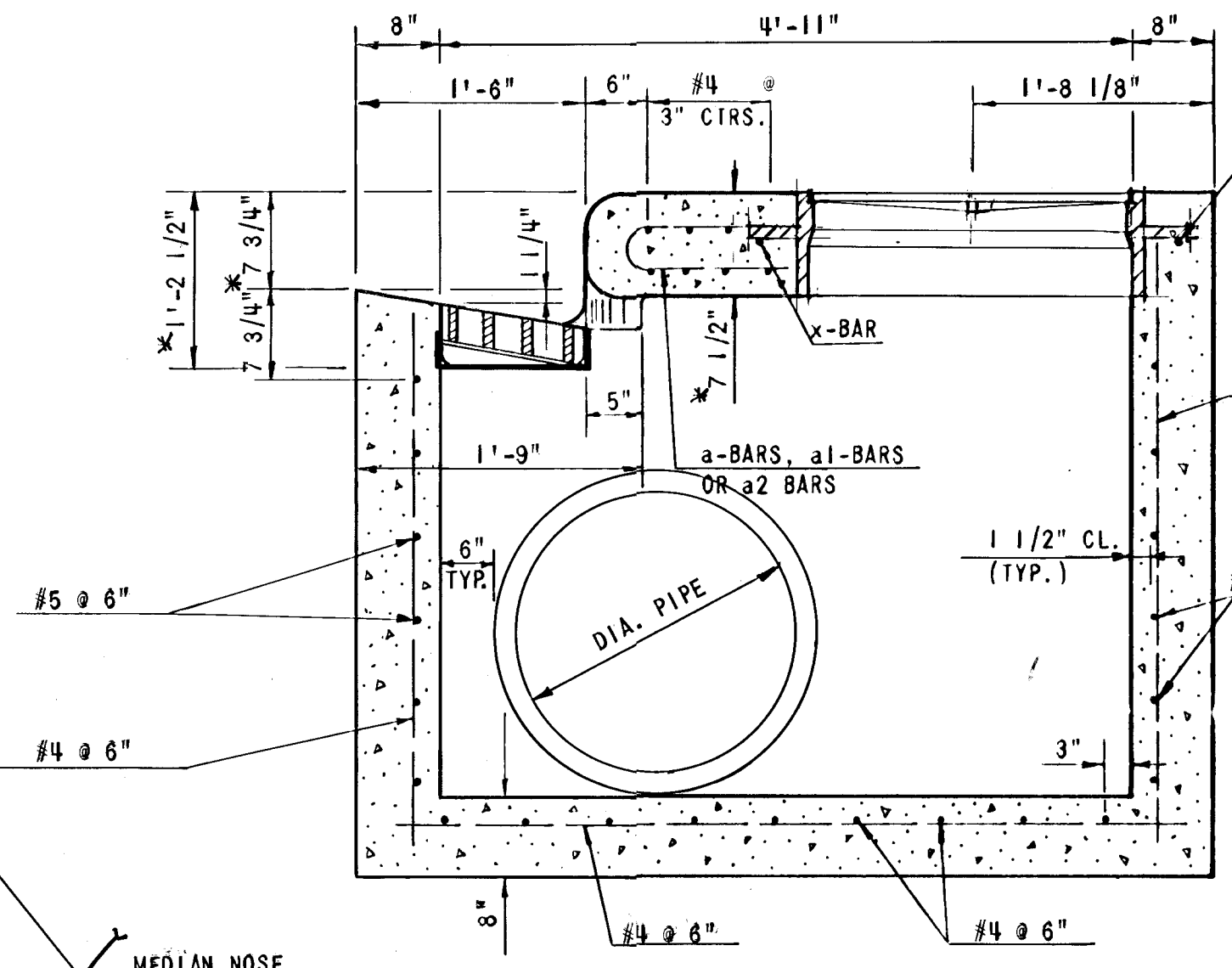
F H W A REGION NO.	STATE	PROJECT NO.	FISCAL YEAR	SHEET NO.	TOTAL SHEETS
		*	1983		



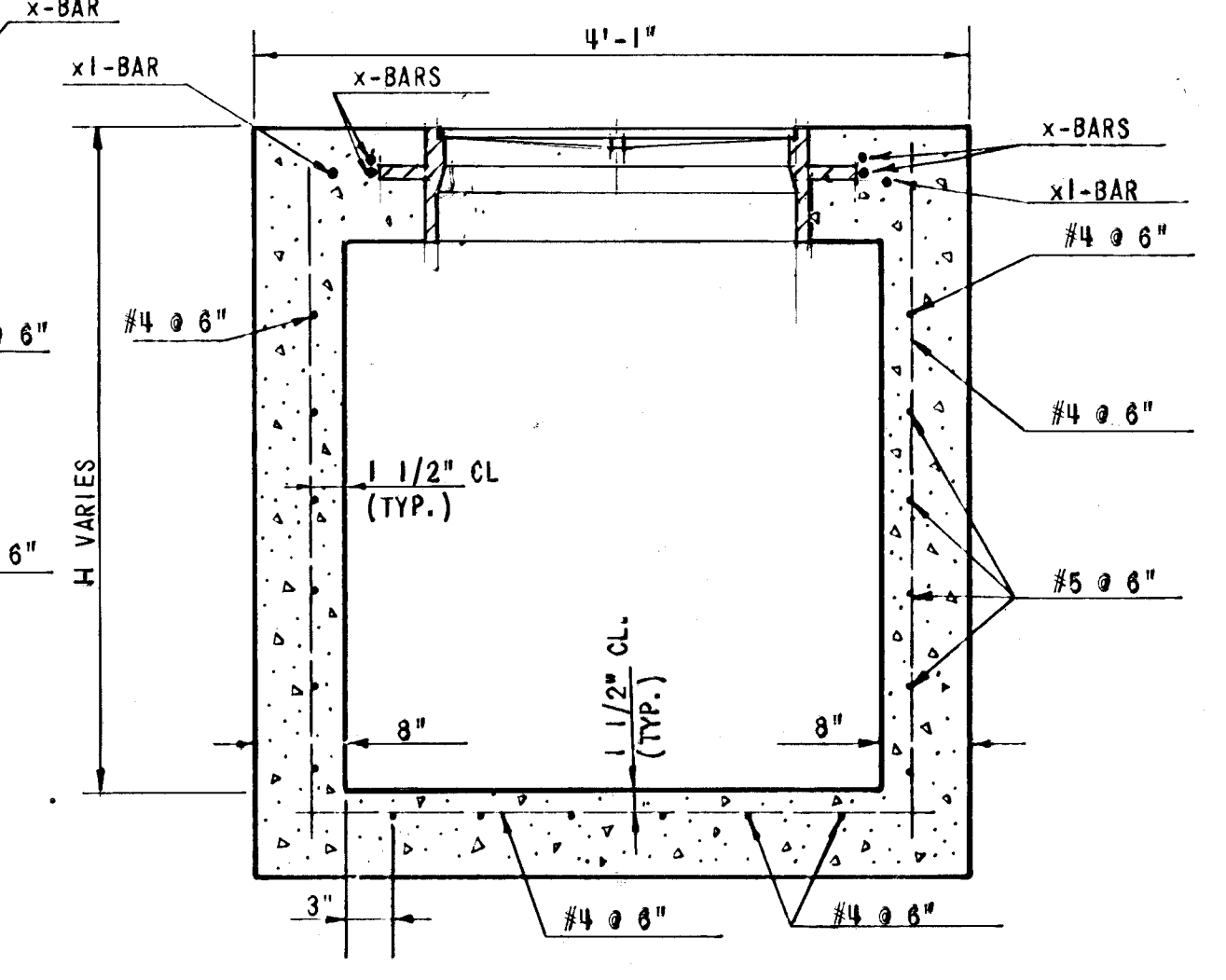
SECTION D-D



SECTION C-C



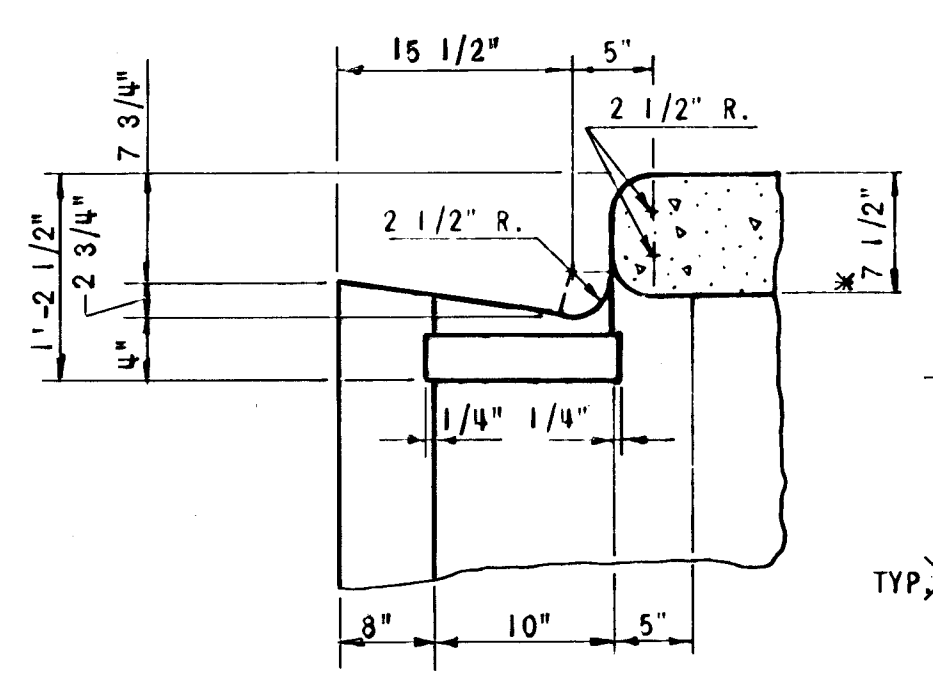
SECTION A-A



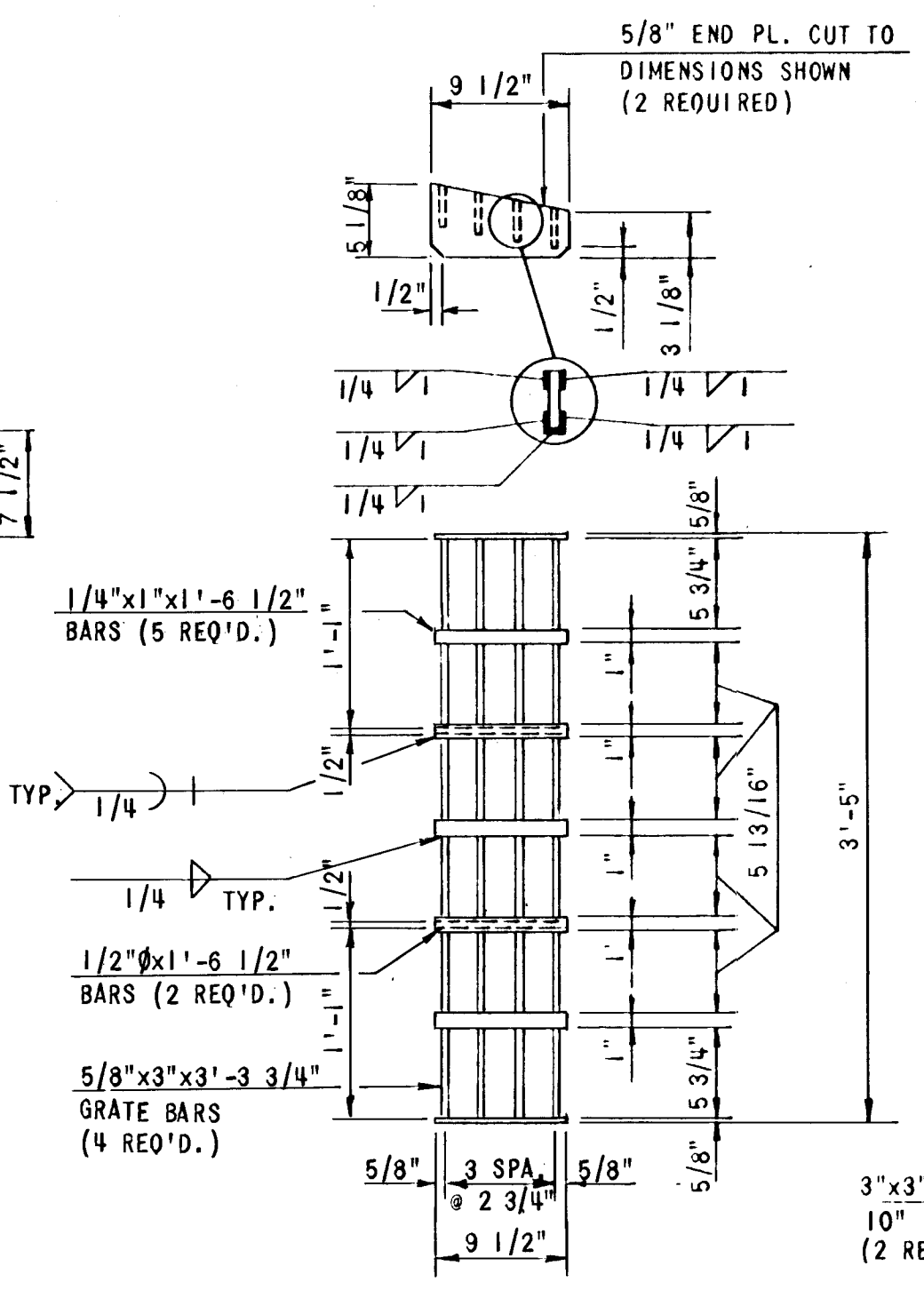
SECTION B-B

NOTE:
 FOR INLET NOS. 3
 TRANSITION GUTTER FROM
 NORMAL DEPTH OF 8" TO
 DEPTH OF 9 3/4".
 FOR INLET NOS. 4 AND 5
 TRANSITION GUTTER 1 3/4"
 IN 2'-6".
 CURB AND GUTTER SECTIONS
 SHALL BE SHAPED WHERE
 REQUIRED BY THE INSTALLATION
 OF CURB INLETS. THIS WORK
 WILL BE SUBSIDIARY TO OTHER
 BID ITEMS.

*** NOTE:** FOR INLET NOS. 4 AND 5
 THICKEN TOP SLAB FOR CURB
 TRANSITION. SEE DETAIL
 SHEET NO. 5

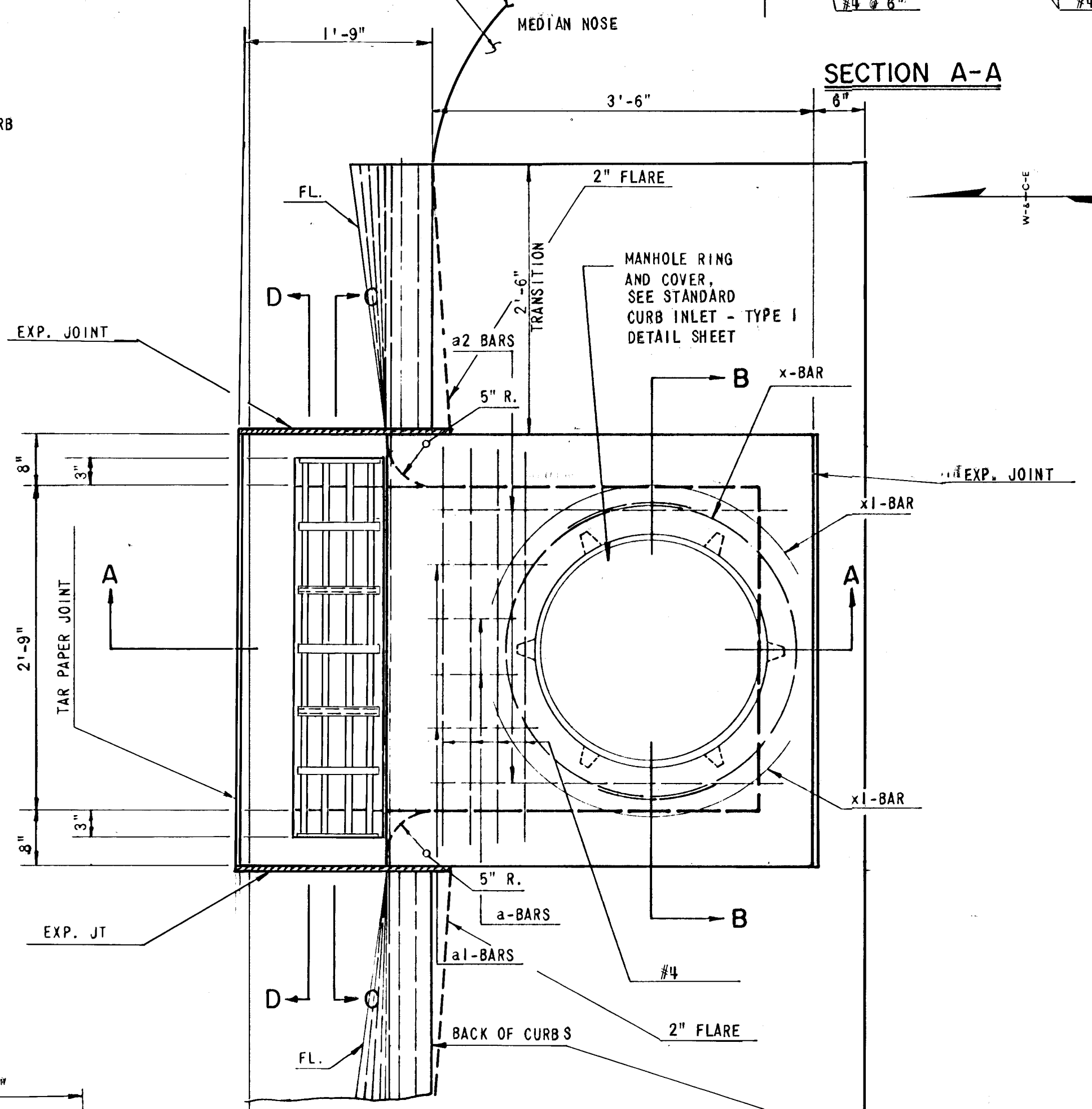


SECTION E-E
 (REINFORCING STEEL NOT SHOWN)



GRATE AND FRAME

TO PREVENT GRATE FROM ROCKING ON BEARING ANGLES, MACHINE FINISH SURFACE INDICATED THUS: "X"
 STEEL GRATE AND FRAME SHALL COMPLY WITH ASTM A-36, A-242 OR A-441.
 WELDED STRUCTURAL STEEL GRATE AND FRAME WEIGHT = 110 LBS. FOR

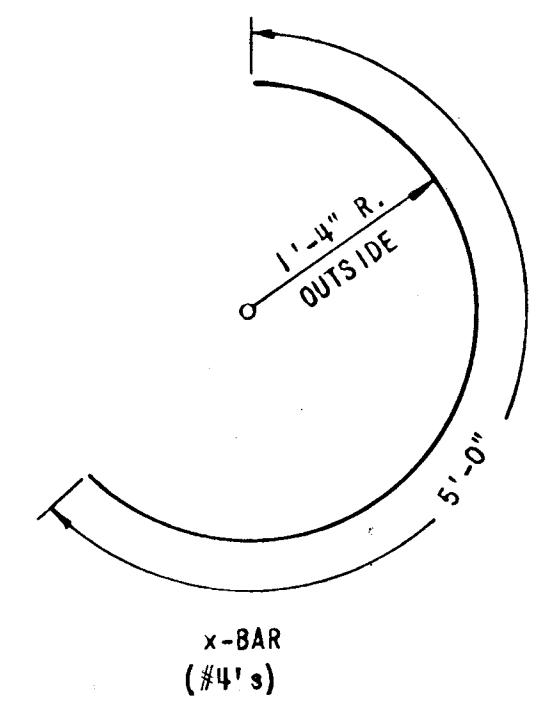


PLAN AND PART SECTION *

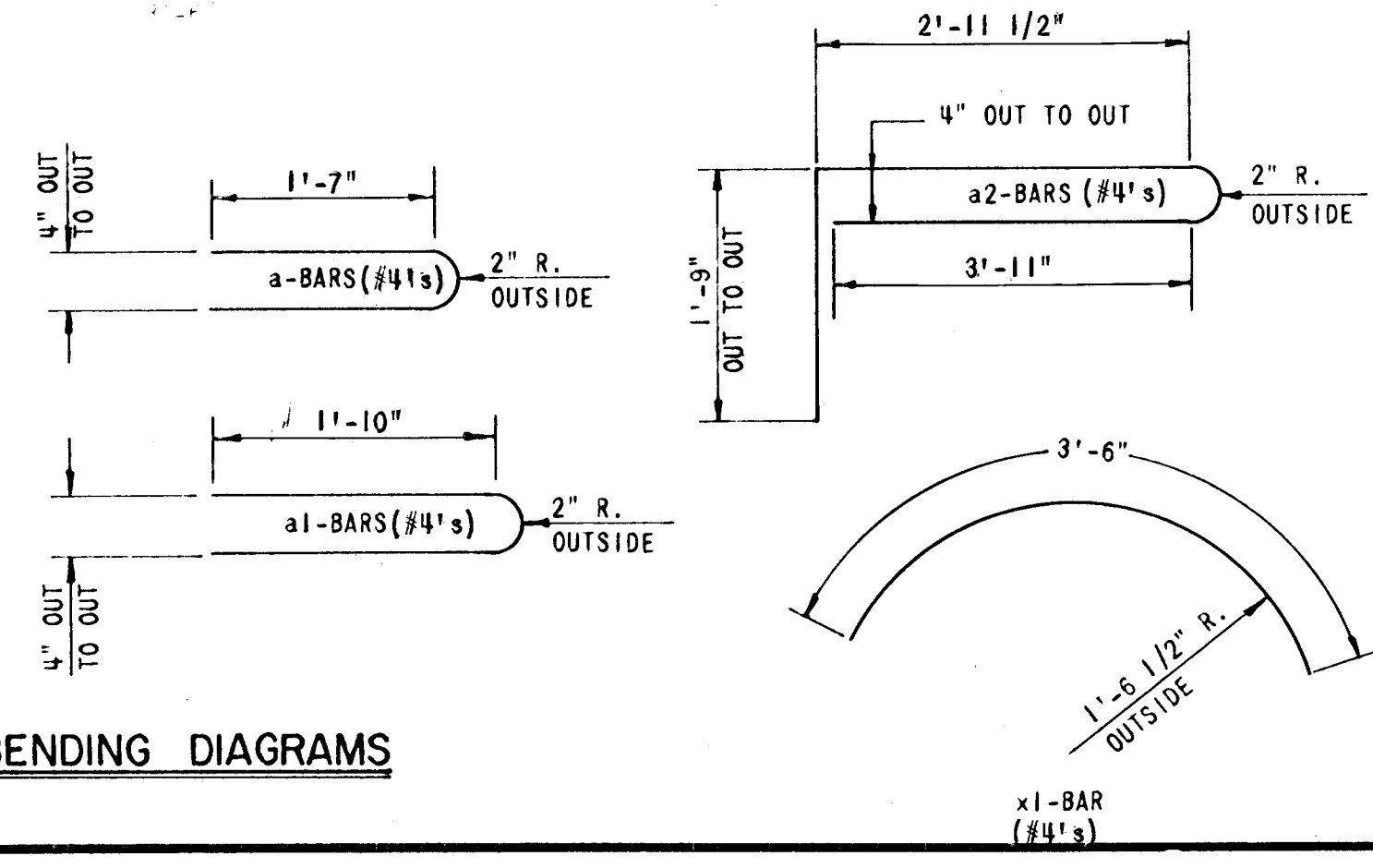
*** NOTE:** PLAN SHOWS INLET NO. 3.
 MODIFY CURB AND GUTTER SECTION
 TO CONFORM TO THE RETURN FOR
 INLET NOS. 4 AND 5.

GENERAL NOTES

ALL DIMENSIONS RELATIVE TO REINFORCING STEEL ARE TO THE CENTER OF BARS UNLESS OTHERWISE NOTED ON THE PLANS.
 REINFORCING STEEL SHALL BE BENT AROUND ALL PIPES UNLESS OTHERWISE DIRECTED BY THE ENGINEER.
 THE TOP OF THE INLET SHALL BE SLOPED TO MATCH THE SIDEWALK OR MEDIAN GRADE.
 FLOOR OF INLET SHALL BE SHAPED AS SPECIFIED FOR REINFORCED CONCRETE MANHOLES.
 PLACE EXPANSION MATERIAL ADJACENT TO SIDEWALK SLABS AT INLET NOS. 4 AND 5.

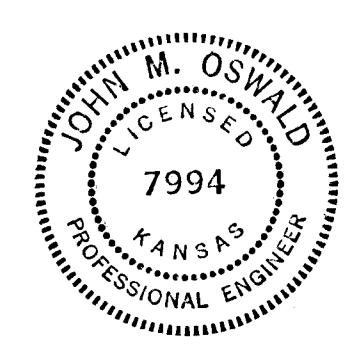


BENDING DIAGRAMS



* CITY OF WICHITA PROJECT NO. 472-76-245-81199-000-000-001

NO.	DATE	REVISIONS	BY	APP'D
3				
2				
1				



WICHITA, KANSAS
 McLEAN AT SENECA INTERSECTION IMPROVEMENTS
 MODIFIED TYPE 12 CURB INLET
 WCEA FILE NO. 82-324A SHEET 28 OF 37
WILSON & COMPANY
 ENGINEERS & ARCHITECTS
 WICHITA, KANSAS
 DESIGNED JMO TRACED MEK CHECKED