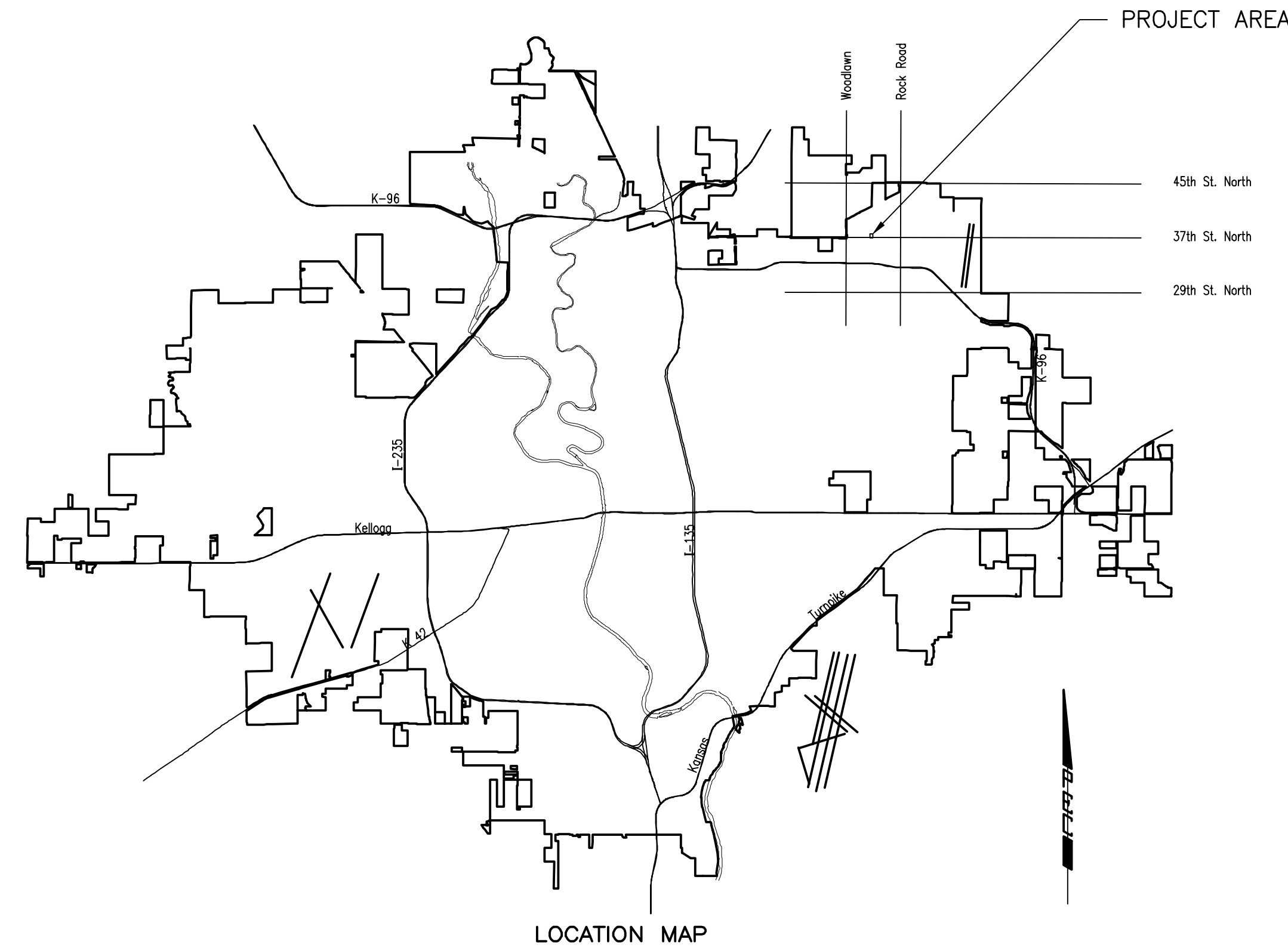


37TH STREET PUMP STATION SANITARY SEWER SERVICE

IN
THE CITY OF WICHITA, KANSAS
CITY OF WICHITA PROJECT NO. 468-2019-002697
OCA NO. 183624
GARY JANZEN, P.E. - CITY ENGINEER

PER PLAN

Wildcat Construction - Contractor
G. Baalman - City of Wichita, Field Project Engineer
T. Collins - City of Wichita, Inspector
As-built
Completion Date: 5/29/20
: apr 7/23/20



INDEX OF SHEETS

SHEET NO. C1	TITLE SHEET
SHEET NO. C2	KEY MAP, BUBBLE MAP AND GENERAL NOTES
SHEET NO. C3	SANITARY SEWER LINE NO. 1
SHEET NO. C4	PRECAST SANITARY SEWER MANHOLE
SHEET NO. C5	MANHOLE FRAME AND COVER (SANITARY SEWER)
SHEET NO. C6	VERTICAL RISER ASSEMBLY SEWER DETAIL
SHEET NO. C7-C11	EROSION CONTROL DETAILS



37TH STREET BOOSTER PUMP STATION
SANITARY SEWER SERVICE

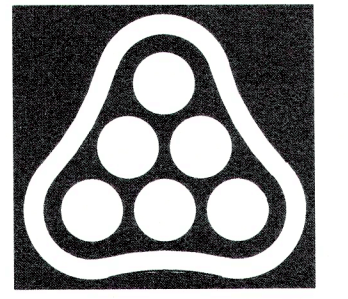
CITY OF WICHITA PROJECT NO. 468-2019-002697
GARY JANZEN, P.E. - CITY ENGINEER

Issue:	

JOB NO.	197042-002
DATE	AUGUST 2019
PM	JAG
DESIGNED BY	TRK
DRAWN BY	CSL
CHECKED BY	RWG

TITLE SHEET
C01

AUGUST 2019
PLANS PREPARED BY
PROFESSIONAL ENGINEERING CONSULTANTS, P.A.
ENGINEERS
WICHITA, KANSAS



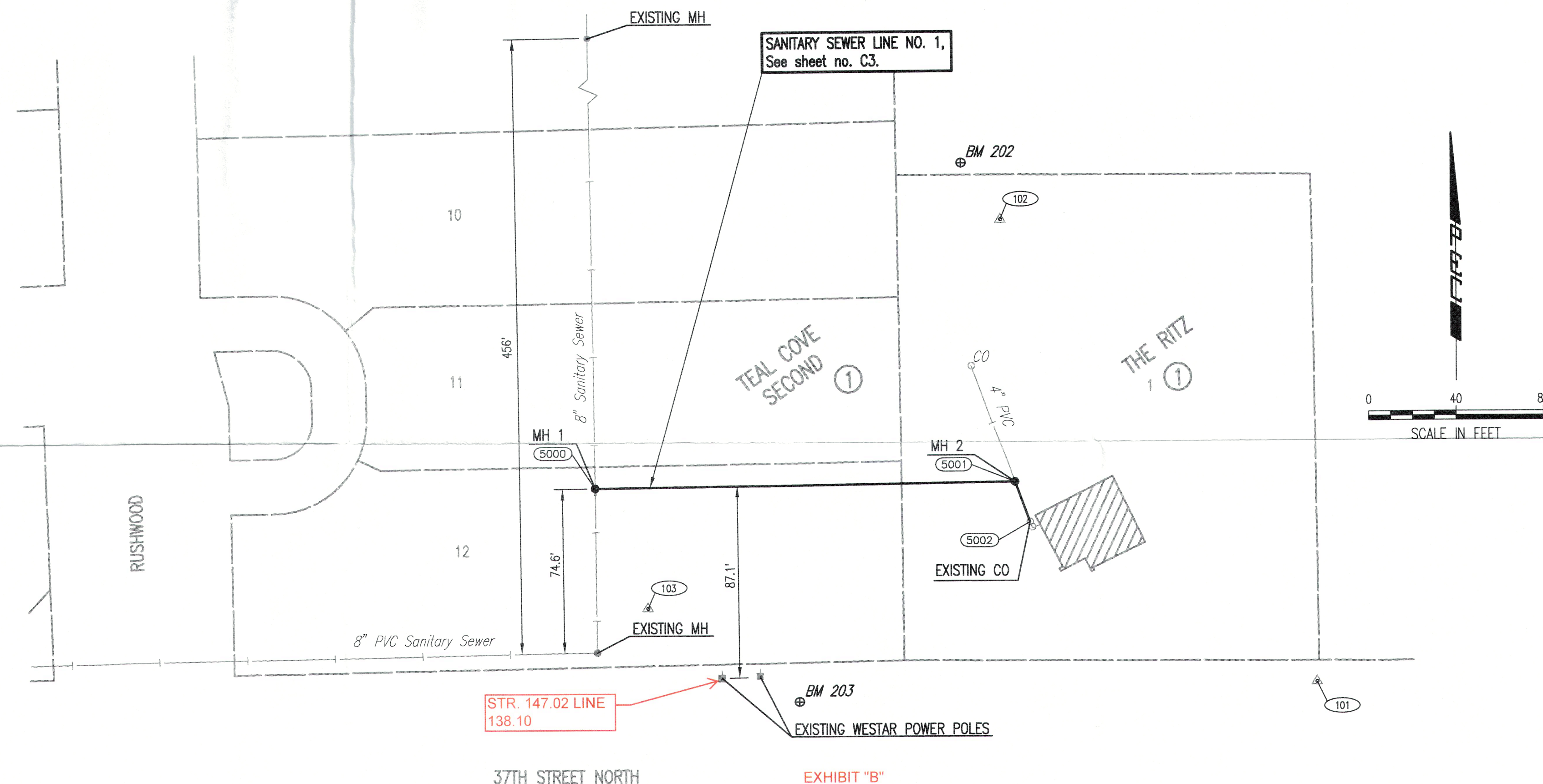
PEC
 PROFESSIONAL ENGINEERING CONSULTANTS
 623 MASSACHUSETTS ST.
 SUITE 200
 LAWRENCE, KS 66044
 785-842-6464 www.pec1.com

GENERAL NOTES

- ALL CONSTRUCTION AND MATERIALS TO COMPLY WITH CITY OF WICHITA STANDARD SPECIFICATIONS AND SPECIAL PROVISIONS.
- EACH BIDDER SHALL VISIT THE SITE OF THE PROJECT BEFORE SUBMITTING THE PROPOSAL FOR THIS WORK SO THAT THEY WILL BE FULLY INFORMED OF THE EXISTING FIELD CONDITIONS AND THE OBSTACLES WHICH MIGHT BE ENCOUNTERED. UPON AWARD OF THE CONTRACT THE CONTRACTOR WILL NOT BE GRANTED ANY ADDITIONAL COMPENSATION WITH REGARDS TO TIME AND MONEY FOR CONDITIONS THAT MAY HAVE BEEN EVALUATED DURING ANY INSPECTION OF THE SITE.
- AT LEAST 72 HOURS PRIOR TO BEGINNING ANY EXCAVATION (EXCLUDING WEEKENDS AND HOLIDAYS), THE CONTRACTOR SHALL CONTACT THE KANSAS ONE-CALL SYSTEM, A UTILITY LOCATION SERVICE, AT 1-316-687-2470 OR 811 TO REQUEST THE LOCAL UTILITY COMPANIES TO LOCATE ANY EXISTING LINES WITHIN THE PROJECT AREA.
- THE CONTRACTOR MUST NOTIFY THE FOLLOWING IN CASE OF AN EMERGENCY:

EMERGENCY DISPATCH	911
AT&T	800-246-8464
CITY OF WICHITA WATER & SEWER	316-219-8921
CITY OF WICHITA STORMWATER	316-268-4090
CITY OF WICHITA TRAFFIC	316-268-4034
BLACK HILLS ENERGY	800-694-8989
COX COMMUNICATIONS	888-249-3530
KANSAS GAS SERVICE	888-482-4950
WESTAR ENERGY	800-544-4857

- THE CONTRACTOR SHALL GIVE ALL PROPERTY OWNERS AND/OR TENANTS OF DEVELOPED PROPERTY DIRECTLY ABUTTING THE CONSTRUCTION OF THIS PROJECT A MINIMUM OF TEN (10) DAYS ADVANCE NOTICE PRIOR TO THE START OF CONSTRUCTION.
- THE CONTRACTOR SHALL NOT START WORK ON THE PROJECT UNTIL THE PROJECT INSPECTOR IS ASSIGNED AND IS PRESENT ON THE SITE. ANY WORK DONE WITHOUT INSPECTION WILL BE REQUIRED TO BE UNCOVERED FOR INSPECTION AT THE CONTRACTORS EXPENSE.
- ALL ELEVATIONS SHOWN ARE NAVD88 DATUM. PRIOR TO CONSTRUCTION THE CONTRACTOR SHALL RE-ESTABLISH CONTROL POINTS AND BENCH MARKS AND VERIFY THEIR ACCURACY.
- EXISTING UTILITIES AND THEIR LOCATION, AS SHOWN ON THE DRAWINGS, REPRESENT THE BEST INFORMATION OBTAINABLE FOR DESIGN. LOCATION INFORMATION HAS BEEN OBTAINED FROM THE VARIOUS UTILITY COMPANIES AND IS EITHER FROM COMPANY RECORD DRAWINGS OR COMPANY PROVIDED FIELD LOCATIONS. IT SHOULD BE NOTED THAT OTHER BURIED LINES AND CABLES MAY EXIST WHICH ARE NOT SHOWN ON THESE DRAWINGS. THE CONTRACTOR SHALL HAVE ALL BURIED LINES LOCATED AND FLAGGED IN THE FIELD PRIOR TO COMMENCING WORK. THE CONTRACTOR SHALL CONTACT THE ENGINEER AND REVIEW ALL BURIED LINES LOCATED TO DETERMINE IF CONFLICTS EXIST. THE CONTRACTOR WILL BE REQUIRED TO WORK AROUND EXISTING UTILITIES WITHIN THE RIGHT-OF-WAY WHICH DO NOT CONFLICT WITH PROPOSED CONSTRUCTION. THE CONTRACTOR SHALL EXERCISE EXTREME CAUTION DURING TRENCHING OPERATIONS TO AVOID DAMAGING THESE LINES. ANY LINES DAMAGED SHALL BE REPLACED OR REPAIRED IMMEDIATELY AS DIRECTED BY THE ENGINEER AT THE CONTRACTOR'S EXPENSE.
- THE CONTRACTOR SHALL BE RESPONSIBLE FOR PRESERVING PROPERTY IRONS. THE CONTRACTOR SHALL BE REQUIRED TO RE-ESTABLISH ANY PROPERTY IRONS WHICH ARE DAMAGED OR DESTROYED BY THEIR CONSTRUCTION OPERATIONS. SUCH IRONS SHALL BE RE-ESTABLISHED BY A LICENSED LAND SURVEYOR IN ACCORDANCE WITH STATE LAWS. ALL COSTS FOR THIS WORK SHALL BE CONSIDERED SUBSIDIARY TO "SITE RESTORATION".
- EASEMENTS AND RIGHT-OF-WAY PROVIDED BY THE OWNER FOR THE PROJECT ARE SHOWN ON THE DRAWINGS. THE CONTRACTOR SHALL BE RESPONSIBLE FOR THE ACQUISITION OF ANY ADDITIONAL TEMPORARY EASEMENTS OR RIGHT-OF-WAY DESIRED TO USE IN COMPLETING THE WORK.
- THE CONTRACTOR SHALL CONTAIN THEIR OPERATIONS TO PERMIT LOCAL AND EMERGENCY TRAFFIC THROUGH AND ACROSS CONSTRUCTION AT ALL TIMES. INTERURBAN TRAFFIC GENERATED OUTSIDE THE PROJECT AREA AND LOCAL BUSINESS OR RESIDENTIAL TRAFFIC GENERATED WITHIN THE PROJECT AREA ARE TO BE CARRIED THROUGH CONSTRUCTION. THE CONTRACTOR SHALL UTILIZE WARNING SIGNS, FLASHING LIGHTS, BARRICADES, AND FLAGMEN IN COMPLIANCE WITH LATEST VERSION OF THE MANUAL ON UNIFORM TRAFFIC CONTROL DEVICES (MUTCD) TO ENSURE SAFETY.
- RUBBLE FROM THE REMOVAL OF MISCELLANEOUS STRUCTURES INCLUDING ANY TREES REMOVED, TREE TRIMMINGS, AND EXCESS EXCAVATION WHICH IS TO BE WASTED SHALL BE DISPOSED OF ON SITES PROVIDED BY THE CONTRACTOR. THESE SITES SHALL ALSO BE APPROVED BY THE ENGINEER AS TO SUITABILITY, APPEARANCE, AND SITE LOCATION. LOCATIONS THAT, IN THE OPINION OF THE ENGINEER, WILL LEAVE AN UNSIGHTLY APPEARANCE WILL NOT BE APPROVED. ALL DISPOSAL SITES MUST BE APPROVED BY THE KANSAS DEPARTMENT OF HEALTH AND ENVIRONMENT. MATERIAL EITHER STOCKPILED OR DISPOSED OF IN A FLOOD PLAIN WILL REQUIRE A KANSAS STATE BOARD OF AGRICULTURE PERMIT. ANY MATERIAL DUMPED IN WATERS OF THE UNITED STATES OR WETLANDS IS SUBJECT TO U.S. CORPS OF ENGINEERS PERMITTING REGULATIONS. ANY MATERIAL BURIED OR STOCKPILED BEYOND APPROVED CONSTRUCTION LIMITS MAY REQUIRE ARCHAEOLOGICAL INVESTIGATIONS UNLESS BURIED IN A PREVIOUSLY APPROVED DISPOSAL LOCATION.
- THE CONTRACTOR SHALL AVOID REMOVAL OR TRIMMING OF ANY TREES OR SHRUBS WHERE POSSIBLE. TREES AND SHRUBS IN PUBLIC RIGHT-OF-WAY WHICH ARE IN DIRECT CONFLICT WITH PROPOSED NEW CONSTRUCTION SHALL BE REMOVED BY THE CONTRACTOR WITH THE ENGINEER'S APPROVAL. TREES AND SHRUBS WHICH ARE NOT IN DIRECT CONFLICT WITH PROPOSED NEW CONSTRUCTION SHALL BE SAVED AND PROTECTED FROM DAMAGE. THE COST FOR ANY NECESSARY TREE TRIMMING, CLEARING AND/OR GRUBBING SHALL BE SUBSIDIARY TO "SITE CLEARING". FULL TREE REMOVAL SHALL BE NOTED ON THE PLANS AND SHALL BE BID AS "TREE REMOVED, LARGE", "TREE REMOVED, SMALL", OR "TREE ROW REMOVED".
- THE CONTRACTOR SHALL RESTORE ALL DITCHES, SWALES, ROAD SHOULDERS, AND BANKS TO THEIR ORIGINAL SLOPES AND GRADES EXCEPT AS SHOWN OTHERWISE. WHERE EXISTING ENTRANCE PIPE, DRAINAGE PIPE, SIGNS, FENCES, IRRIGATION, LANDSCAPING, ETC., CONFLICT WITH THE PROPOSED WORK HEREIN, THEY SHALL BE REMOVED AND REPLACED OR RESET, UNLESS OTHERWISE NOTED ON THE DRAWINGS. THE REPLACEMENT OF ALL THE FOREMENTIONED ITEMS, INCLUDING SEEDING, FERTILIZER, AND MULCHING SHALL BE CONSIDERED SUBSIDIARY TO "SITE RESTORATION".



- THE CONTRACTOR SHALL INSTALL AND/OR MAINTAIN EROSION CONTROL METHODS AS SPECIFIED ON THE PLANS. THE CONTRACTOR SHALL BE RESPONSIBLE FOR MAINTAINING EROSION CONTROL THROUGH THE COMPLETION OF THIS PROJECT. INSTALLATION OF THESE EROSION CONTROL DEVICES DOES NOT RELIEVE THE CONTRACTOR OF THE RESPONSIBILITY OF ABATING SOIL EROSION. THE FOLLOWING QUANTITIES ARE ESTIMATED, AND SHOULD BE CONSIDERED THE MINIMUM EFFORT REQUIRED.
 SILT FENCE BARRIER 50 L.F.
 CONSTRUCTION ENTRANCE 1 EACH
- THE CONTRACTOR SHALL TAKE CARE TO PREVENT SILT AND DEBRIS FROM ENTERING ANY STORM DRAINAGE SYSTEM DURING CONSTRUCTION. PIPES OR STRUCTURES WHICH CONTAIN MATERIALS FROM THE CONTRACTORS ACTIVITIES SHALL BE THOROUGHLY CLEANED BY THE CONTRACTOR, AT THEIR OWN EXPENSE, PRIOR TO THE FINAL INSPECTION.
- ALL LAWN/TURF AREAS DISTURBED BY CONSTRUCTION OF THE PROPOSED IMPROVEMENTS SHALL BE RESTORED WITH THE SAME GRASS/SOD AS EXISTING. RESTORATION OF DISTURBED AREAS SHALL INCLUDE, BUT NOT BE LIMITED TO, TOP SOIL PREPARATION, SEEDING, MULCHING, AND/OR RE-SEEDING. ALL SEEDING/SODDING WORK SHALL BE IN ACCORDANCE WITH THE CITY OF WICHITA STANDARD SPECIFICATIONS AND THE CITY OF WICHITA ADMINISTRATIVE REGULATION NO. AR6.5 WHICH GOVERNS CLEANUP AND RESTORATION OR REPLACEMENT FOLLOWING CONSTRUCTION. ALL COSTS FOR THIS WORK SHALL BE SUBSIDIARY TO "SITE RESTORATION".
- THE CONTRACTOR SHALL SEED ALL AREAS DISTURBED BY CONSTRUCTION ACTIVITIES WITH TEMPORARY RYE GRASS. RYE GRASS SEED SHALL BE PLANTED AT A MINIMUM RATE OF SIX (6) POUNDS PER ONE THOUSAND (1,000) SQUARE FEET. THIS TEMPORARY SEEDING MAY BE OMITTED ONLY IF PERMANENT SEEDING/SODDING IS APPLIED. TEMPORARY SEEDING OR PERMANENT SEEDING/SODDING SHALL BE APPLIED WITHIN 14 DAYS AFTER THE AREA HAS BEEN DISTURBED. ALL COSTS FOR TEMPORARY RYE GRASS SEEDING SHALL BE CONSIDERED SUBSIDIARY TO "SITE RESTORATION".
- THE CONTRACTOR SHALL PROVIDE POSITIVE DRAINAGE AWAY FROM ALL MANHOLE COVERS.
- CONTRACTOR SHALL NOT DIVERT ANY SEWAGE FLOW THROUGH NEW PIPE OR MANHOLES UNTIL TESTING HAS BEEN COMPLETED AND ACCEPTED.

SANITARY SEWER LINE NO. 1				
COORDINATE LIST				
POINT	NORTHING	EASTING	STATION	DESCRIPTION
5000	1,710,155.9064	1,672,455.1131	0+00.0	MH 1
5001	1,710,158.5533	1,672,647.2944	1+92.2	MH 2
5002	1,710,140.2780	1,672,654.1960	2+11.7	EXIST. CO

(5000) = COORDINATE POINT NO.

CONTROL POINTS

BENCH MARK LIST

- Pt. No. 101**
 1/2" REBAR W/ BLUE CAP
 N: 1,710,067.135, E: 1,672,785.781
 1. 1.80' SOUTH TO SOUTH EDGE CONC. WALK.
 2. 11.31' WEST TO EAST EDGE DRIVE APPROACH.
 3. 42.10' WSW TO BMK 201.
- Pt. No. 102**
 1/2" REBAR W/ BLUE CAP
 N: 1,710,277.883, E: 1,672,640.933
 1. 41.70' SW TO CENTER OF MANHOLE.
 2. 28.20' NW TO CENTER OF AREA INLET GRATE.
 3. 50.00' NE TO SW CORNER OF SIDEWALK.
- Pt. No. 103**
 1/2" REBAR W/ PEC CP CAP
 N: 1,710,101.3390, E: 1,672,479.2740
 1. 18.60' SW TO NE CORNER OF ELECTRIC BOX
 2. 26.10' NORTH TO SW CORNER OF INLET GRATE.
 3. 39.65' E-SE TO NE CORNER OF FENCE COLUMN ON EAST END OF FENCE
- BM #202** - CHISELED "d" ON NW CORNER OF AREA INLET AT NW CORNER OF PUMP STATION
 ELEV.=1372.36 (NAVD88)
- BM #203** - CHISELED "d" ON NW CORNER OF CURB INLET WITH TRIPLE LID LOCATED. ±20' WEST TO C/O OF HIGH VOLTAGE POWER LINES RUNNING N/S.
 ELEV.=1371.94 (NAVD88)

**37TH STREET BOOSTER PUMP STATION
 SANITARY SEWER SERVICE**

CITY OF WICHITA PROJECT NO. 468-2019-002697
 GARY JANZEN, P.E. - CITY ENGINEER

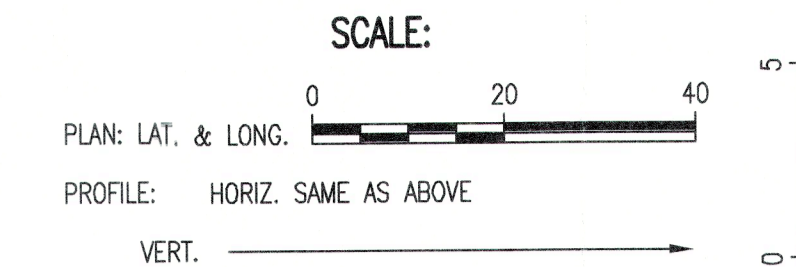
Issue:	
JOB NO.	197042-002
DATE	MAY 2019
PM	JAG
DESIGNED BY	TRK
DRAWN BY	CSL
CHECKED BY	RWG

KEY MAP, BUBBLE MAP AND GENERAL NOTES

C02

Scanned 05-29-2019 8:35:36 AM by KURTIS DEKAT
 File Name: I:\05-29-2019 8:35:36 AM by KURTIS DEKAT
 C:\Users\kdekata\OneDrive\Documents\197042-002-KEY MAP AND GENERAL NOTES

SANITARY SEWER RISER TABLE						FOR INFORMATION ONLY		
NUMBER	TYPE	LOCATION			APPROXIMATE LENGTH			
		LOT NO.	BLOCK NO.	LINE NO.	STATION	DIRECTION	VERTICAL (FT)	HORIZONTAL (FT)
1	4" MH CONNECTION	1	1	1	1+92.20	SE		



**37TH STREET BOOSTER PUMP STATION
SANITARY SEWER SERVICE**

CITY OF WICHITA PROJECT NO. 468-2019-002697
GARY JANZEN, P.E. - CITY ENGINEER

Issue:	
JOB NO.	197042-002
DATE	MAY 2019
PM	JAG
DESIGNED BY	TRK
DRAWN BY	CSL
CHECKED BY	RWG
SANITARY SEWER LINE NO. 1	

C03

Sta. 0+00.00
Const. MH 1
Standard Outside Drop MH (Dog House)
Existing 8" VCP Sanitary Sewer *
Construct MH 1 over existing 8" pipe.
Remove top half of 8" pipe thru MH. Shape invert
to provide smooth flow to proposed pipe.

CAUTION !!!
Buried Electric (Westar Energy)
CAUTION !!!
Buried Telephone (AT&T)

CAUTION !!!
Buried CATV (Cox Communications)
CAUTION !!!
High Voltage Electric (Westar Energy)

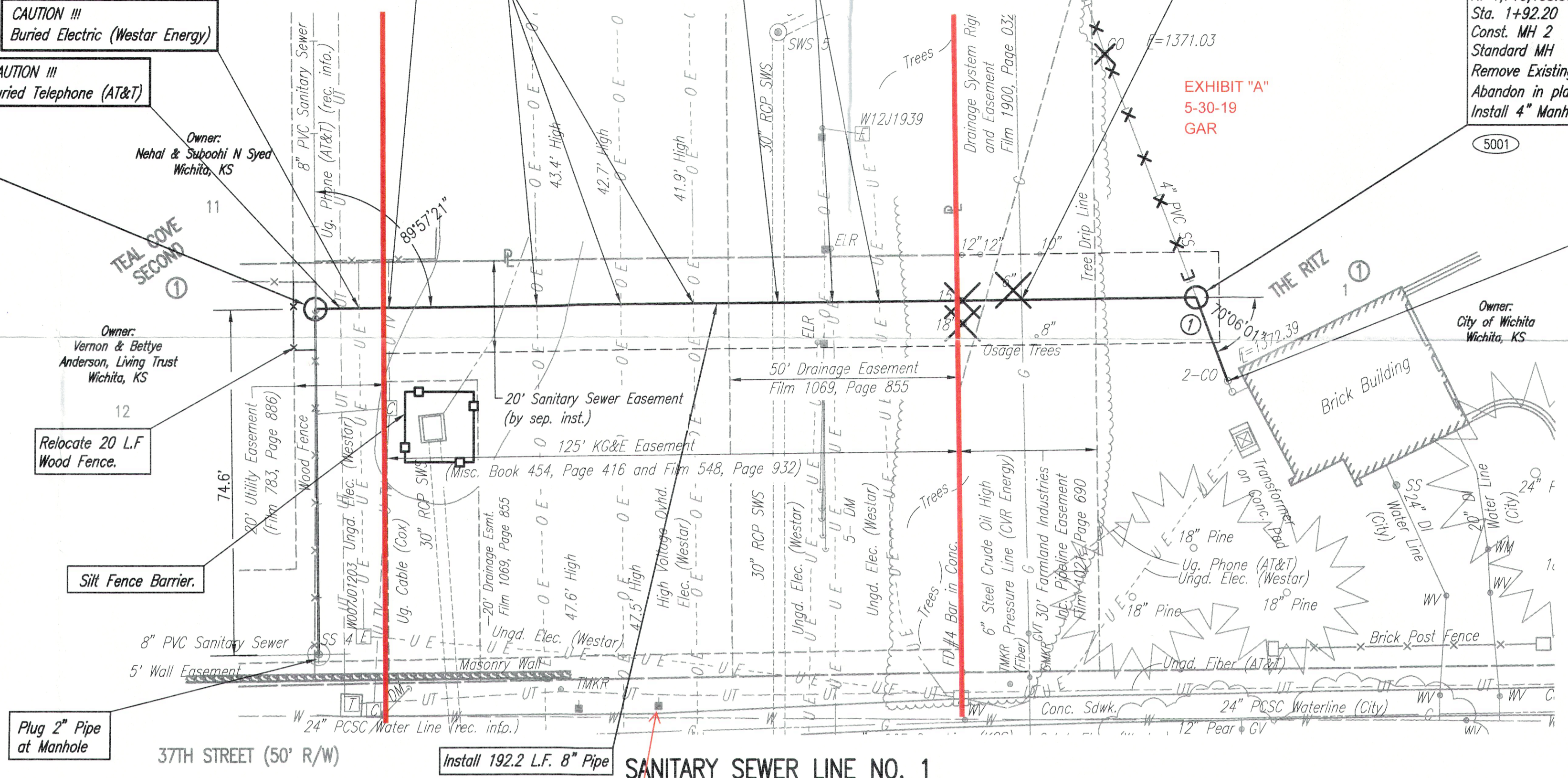
CAUTION !!!
30" RCP Storm Water

CAUTION !!!
Buried Electric (Westar Energy)

CAUTION !!!
6" Steel Crude Oil High Pressure Line (CVR Energy)
Contractor shall obtain approval from CVR Energy to work
within the Pipeline Easement. Contact Steve Lankton
(620-870-8342) at least 2 business days before.

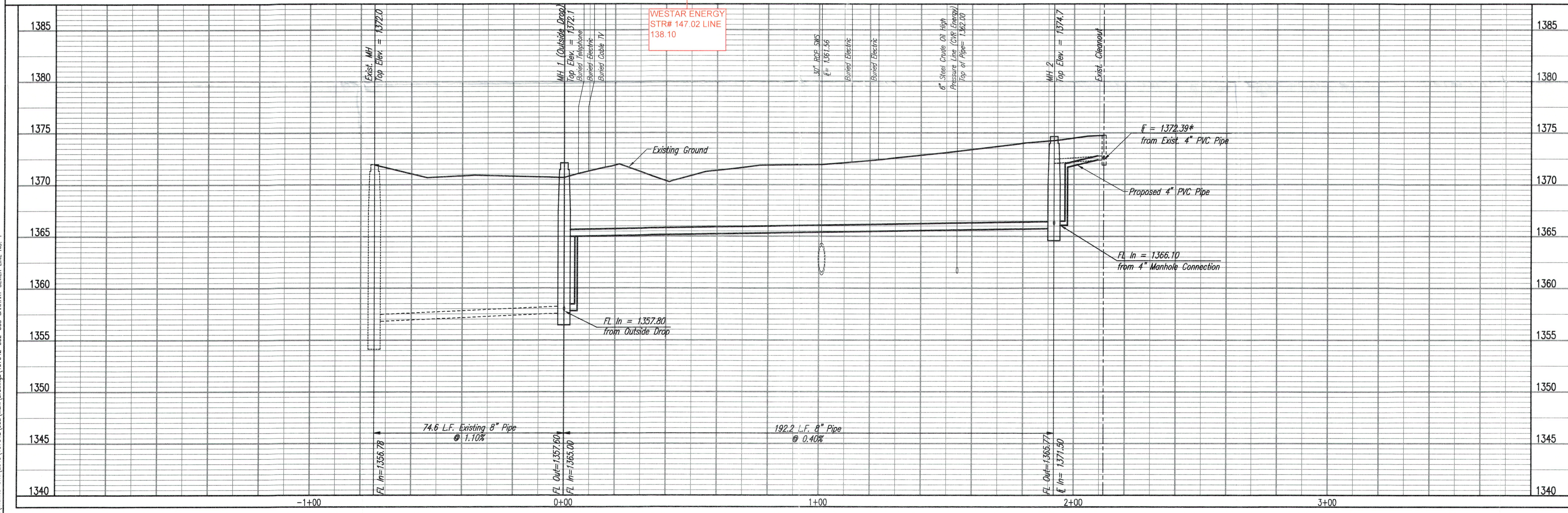
N: 1,710,158.5533, E: 1,672,647.2944
Sta. 1+92.20
Const. MH 2
Standard MH
Remove Existing 4" PVC Pipe * (SE) as necessary for construction.
Abandon in place and Cap/Plug Existing 4" PVC Pipe * (NW)
Install 4" Manhole Connection (SE)

Sta. 2+11.7
Remove and Reset 20 L.F. Existing 4" PVC Pipe.
Connect new 4" Pipe to Existing Cleanout *



- (5000) = SEE SHEET NO. 2 FOR SANITARY SEWER COORDINATES (TYP.)
- [Symbol] = CAP OR MASONRY PLUG TO BE INSTALLED.
- [Symbol] = SANITARY SEWER CLEANOUT TO BE REMOVED.
- [Symbol] = SANITARY SEWER TO BE REMOVED/ABANDONED IN PLACE.
- [Symbol] = TREE TO BE REMOVED
- [Symbol] = RELOCATED WOOD FENCE
- [Symbol] = SILT FENCE BARRIER
- (1) = DENOTES SEWER SERVICE.
SEE THIS SHEET FOR SEWER SERVICE SCHEDULE
AND SHEET NO. C6 FOR DETAILS.

* PRIOR TO BEGINNING CONSTRUCTION, THE CONTRACTOR SHALL EXCAVATE THE EXISTING 8" PVC PIPE AT STA. 0+00.00 AND 4" PVC PIPE AT STA. 1+92.20 TO VERIFY ITS HORIZONTAL AND VERTICAL LOCATION. THE PIPE LOCATION SHALL BE REPORTED TO THE ENGINEER SO THAT ANY NECESSARY PLAN MODIFICATIONS CAN BE MADE. ANY ADDITIONAL LABOR OR MATERIALS NECESSARY TO COMPLETE THE CONNECTION SHALL BE CONSIDERED SUBSIDIARY TO THE PROJECT.



Saved 05-06-2019 8:27:58 AM by CSJ
 Plot Scale 1:1 05-16-2019 8:30:34 AM by JEROME KULMAN
 U:\Wichita-Civil\2019\197042-002\MunDrawings\197042-002-SANITARY SEWER LINE NO. 1