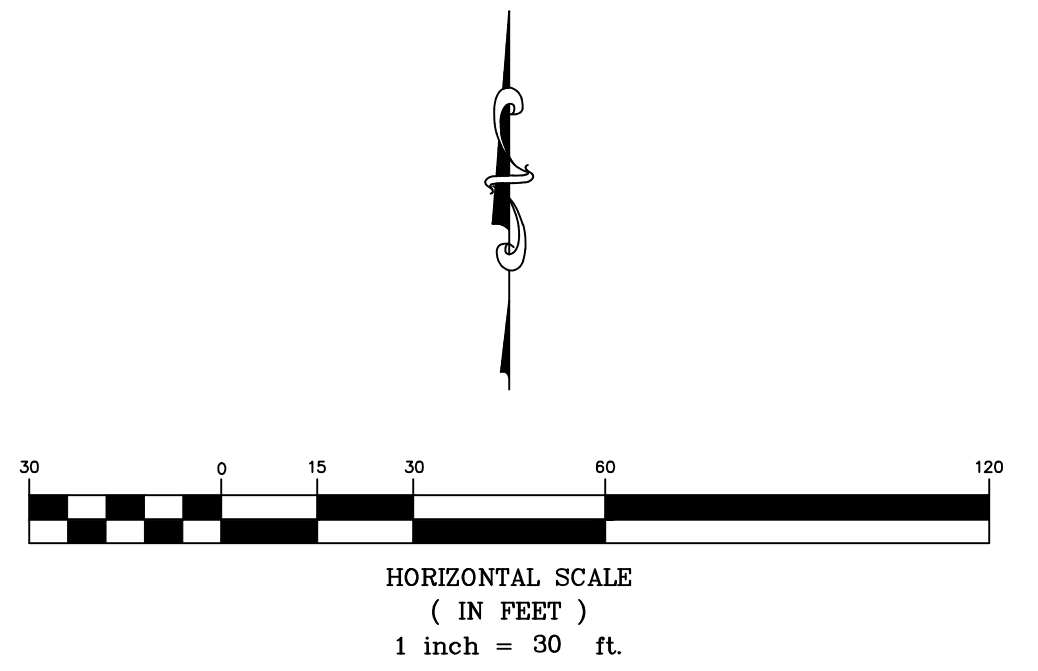
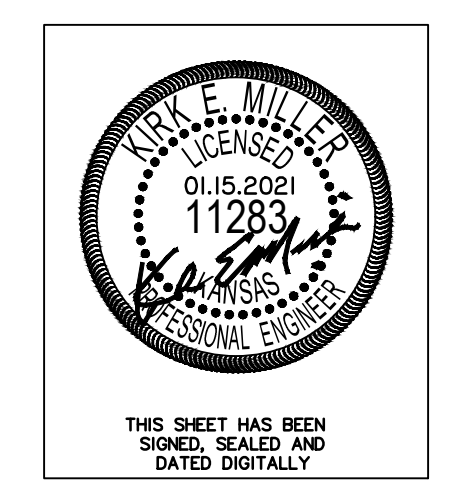


● Control Points

Point #	Northing	Easting	Desc.	BL Station	Offset
1	1688067.63	1689526.04	BM: Mag Nail	0+04.58	+186.33 Lt
2	1687863.09	1689544.83	3/4" Iron Pipe	0+19.90	+18.50 Rt
3	1687863.34	1689559.83	5/8" Rebar	0+34.90	+18.50 Rt
4	1687900.34	1689559.24	1/2" Rebar	0+34.94	+18.50 Lt
5	1688028.39	1689557.20	1/2" Rebar	0+35.07	+146.57 Lt
6	1688034.75	1689941.89	1/2" Rebar	4+19.81	+146.42 Lt
7	1687871.80	1690059.63	1/2" Rebar	5+34.77	+18.50 Rt
8	1687903.84	1689766.35	1/2" Rebar	2+42.08	+18.50 Lt
9	1687927.22	1689788.94	1/2" Rebar	2+65.07	+41.49 Lt
10	1687972.21	1689788.18	1/2" Rebar	2+65.07	+86.49 Lt
11	1687972.84	1689825.18	1/2" Rebar	3+02.07	+86.49 Lt
12	1687927.84	1689825.94	1/2" Rebar	3+02.07	+41.49 Lt
13	1687905.25	1689849.27	1/2" Rebar	3+25.02	+18.50 Lt
14	1687905.41	1689859.26	1/2" Rebar	3+35.01	+18.50 Lt

⊕ Water Line Control Points

Point #	Northing	Easting	WL Sta. / Desc.	BL Station	Offset
20	1687907.46	1689536.73	0+00.00: 8"x8" Tap	0+12.55	+26.0 Lt
21	1687910.37	1689709.22	1+72.52: FH Ass'y	1+85.07	+26.0 Lt
22	1687911.34	1689766.22	2+29.52: 45° Bend	2+42.08	+26.0 Lt
23	1687927.09	1689781.45	2+51.43: 45° Bend	2+57.57	+41.5 Lt
24	1687992.08	1689780.35	3+16.43: Blowoff	2+57.57	+106.5 Lt



**Marinita 2nd Addition
Control Map
Wichita, Kansas**

KEMILLER ENGINEERING P.A. 117 E. Lewis, Wichita, KS 67202 (316)264-0242	PROJECT NUMBER			
	KEM NO. 20023	FILE WATER	DATE 08/2020	SHEET 2.0
	DESIGN KM	DRAWN ZS	REVISED 01/15/2021	