

SWS Sta. 0+00 Line 1
Install
48" End Section w/
2 Restrained Joints &
21 SY Light Rip-Rap
48" FL = 1335.00
N = 1688024.25
E = 1690020.11

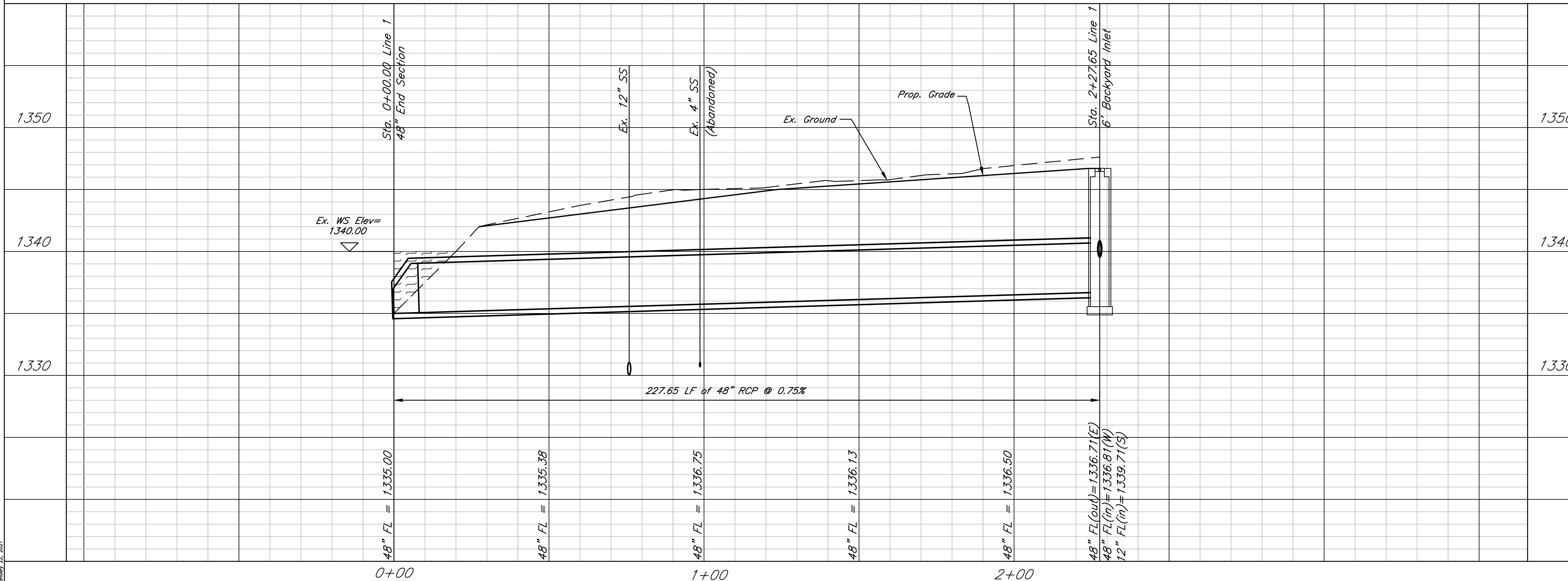
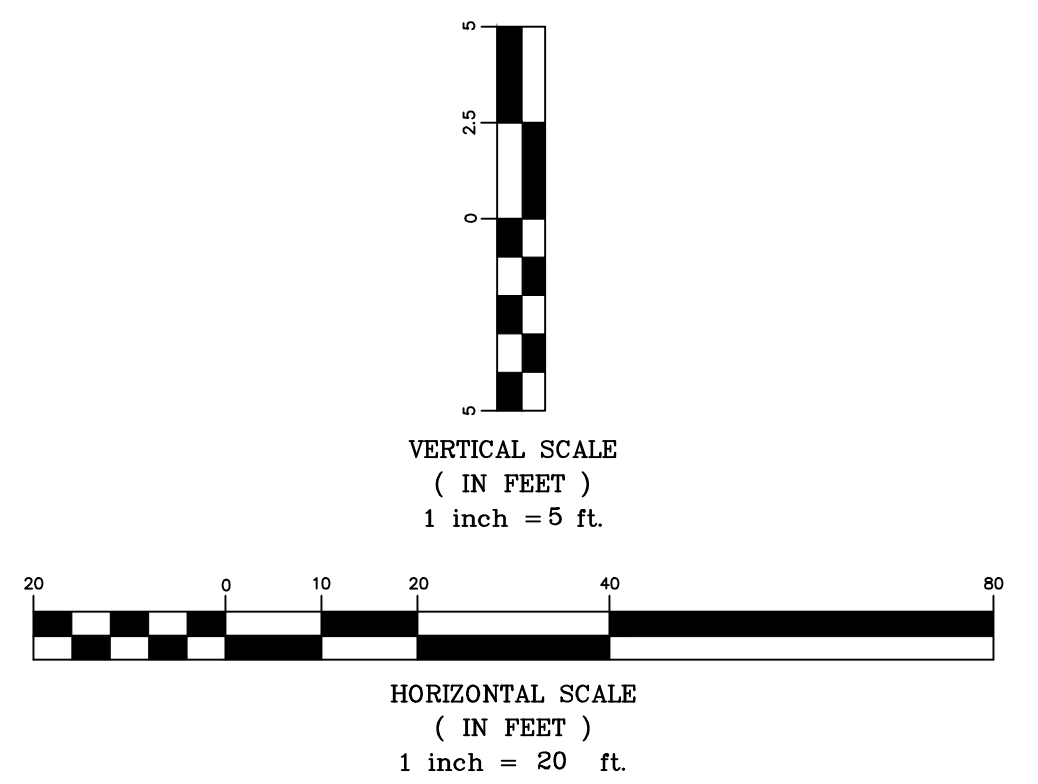
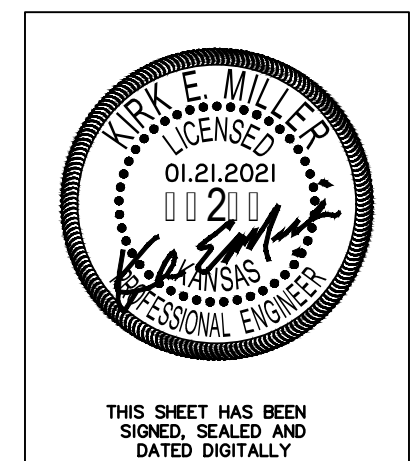
CAUTION!!!
Ex. 12" SS
Crossing

CAUTION!!!
Ex. 4" SS
Crossing
(Abandoned)

227.65 LF
of 48" RCP
@ 0.75%

Prop. 12" RCP (By Others)
[See 472-2020-085656]

SWS Sta. 2+27.65 Line 1
Install 6" SWS Backyard Inlet
Top of Inlet = 1346.70
48" FL(out) = 1336.71 (E)
48" FL(in) = 1336.81 (W)
12" FL(in) = 1339.71 (S)
N=1688024.28 E=1689792.46
Match Point: Sh. 3.1



Marinita 2nd Addition
SWS Plan & Profile - Line 1
Wichita, Kansas

| | | | |
|---|-----------------------------------|----------------------------|---------------------|
| 117 E. Lewis, Wichita, KS 67202 (316)264-0242 | PROJECT NUMBER 468-2020-085454 | | SHEET 3.0 |
| | KEM NO. 20023 DESIGN KM | FILE SWS DRAWN ZS | |

January 23, 2021