

# JACKSON HEIGHTS COURT MARINITA 2ND ADDITION

Project No. 472-2020-085656

OCA: 810133

CITY OF WICHITA, KANSAS

Gary Janzen, P.E., City Engineer

## GENERAL NOTES:

- Contractor will be required to provide notice to utility companies a minimum of twenty-four (24) hours prior to any excavation, as follows:

Kansas One-Call (316)687-2470

The Contractor must notify the following in case of an emergency:

Cox Communications (316)262-4270  
 or (316)263-2061  
 Evergy / Kansas Gas & Electric (800)482-4950  
 AT&T 1-555-1212  
 City of Wichita Water Department (316)268-4908  
 City of Wichita Sewer Department (316)268-4071  
 Aquila Natural Gas (316)941-1608  
 or (800)303-0357

- Exist. utilities and their locations, as shown on the plans, represent the best information attainable for design. Location information has been obtained from the various utility companies and is either from company record drawings or company-provided field locations. The Contractor will be required to work around existing utilities which do not conflict with proposed constructions.

- The Contractor to verify utility locations prior to construction of this project.

- Utility service and installation shall be coordinated with the respective utility owner. Contacts are:

Kansas Gas Service Jim Coe (316)832-3126  
 Evergy Miles Capps (316)261-6251  
 Aquila Networks Calvin Briggs (316)942-8811  
 Wichita Water & Sewer Kerry Gibson (316)268-4555  
 AT&T Jim Toben (316)268-2759  
 Cox Communications Mark Anaya (316)262-4270

- All lawn/turf areas disturbed by construction of proposed improvements shall be restored with the same grass as existing. Restoration of disturbed areas shall include, but not limited to, soil preparation, fertilizing, seeding, mulching (all seeded areas, outside the limits of erosion mat placement), and/or reseeding, and installation of erosion control mat. All seeding work shall be in accordance with the City of Wichita Standard Specifications and the City of Wichita Administrative Regulations No. AR 6.5 which governs cleanup and respiration or replacement following construction. All cost for the soil preparation, seeding and mulching (all seeded areas, outside the limits of erosion mat placement) shall be paid for through the lump sum bid item for "Seeding." All seeded areas within eight feet of the back of new curb shall be covered with an approved erosion mat, which shall be paid for by the measured quantity bid item "Back of Curb Protection (8' wide)."

- Traffic affected by the construction of this project shall be handled in accordance with the latest edition of the Manual on Uniform Traffic Control Devices.

- It is the contractor's responsibility to visit this site to better understand the extent of site clearing and restoration to be performed. Site Clearing and Restoration shall include all costs for removal of items which a pay item is not provided.

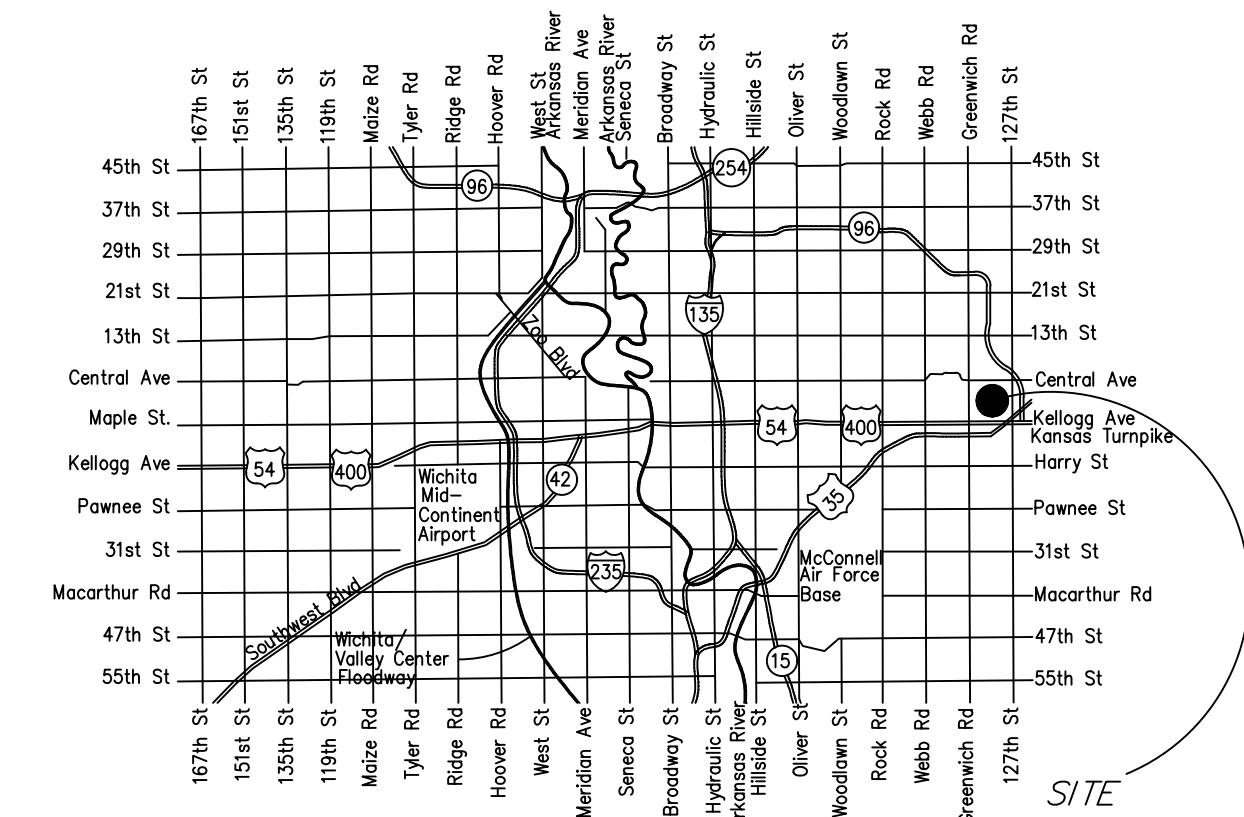
- The contractor shall be responsible for preserving property irons. The contractor will be required to re-establish any property irons which are damaged or destroyed by the construction operations. Such irons shall be re-established by a licensed land surveyor in accordance with state laws.

- Properties within the project limits may have underground sprinkler systems in public right-of-way which conflict with new construction. Contractor will be required to remove such improvements should they not be removed by their owner at the time of construction of the project. The contractor will be required to salvage all sprinkler heads and/or valves and give such material to owner. Portions of underground sprinkler systems not in conflict with new construction shall be protected from damage and shall remain in place. All work in connection with underground sprinkler systems shall be considered as subsidiary to the contract pay items for work.

## Benchmarks

BM#1:  
 Nag-Nail in asphalt paving at edge of road approx. 30.5' West and 39.7' North of NW Corner of Lot 1, Block A, Marinita 2nd Addn.  
 Elev. = 1352.30 (NAVD88)

BM#2:  
 North rim of Manhole approx. 15' North and 44' West of the NW corner of Lot 1, Block A, Marinita 2nd Addn.  
 Elev. = 1354.38 (NAVD88)



## Vicinity Map

## Sheet Index

- 1.0 Title Sheet
- 2.0 Control Map
- 2.1-2.2 Type II Curb Inlet Details
- 3.0 SWS Plan & Profile - Line 1
- 4.0 Paving Plan & Profile
- 5.0 Cross Sections
- 6.0 29" Typical Section
- 6.1 Curb & Gutter Detail
- 6.2 Sign Detail
- 7.0 Grading Plan
- 8.0 Erosion Control Plan
- 8.1-8.5 Erosion Control Details
- 9.0 Plat

## BENEFIT DISTRICTS:

Benefit Area

### Project Length:

Jackson Heights Ct. 412 L.F.

### Earthwork Summary:

Excavation = 147 C.Y.  
 Fill = 21 C.Y.

NET = 126 C.Y. Cut

Note: Contractor is responsible for wasting excess material offsite.

### Stormwater Certification:

New Development  Redevelopment (Circle One)

Stormwater Permit # \_\_\_\_\_

NOI Permit # \_\_\_\_\_

These construction plans were prepared in accordance with the current Stormwater management Regulations as set forth in the City of Wichita's Stormwater Management Ordinance 16.32 and the policies/guidelines presented in the Wichita/Sedgwick County Stormwater Manual.

Site Area (Acres) = 1.60

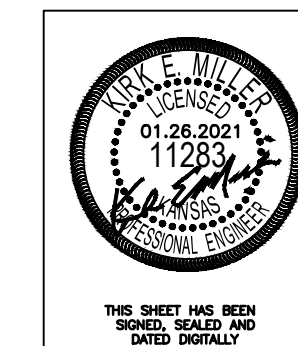
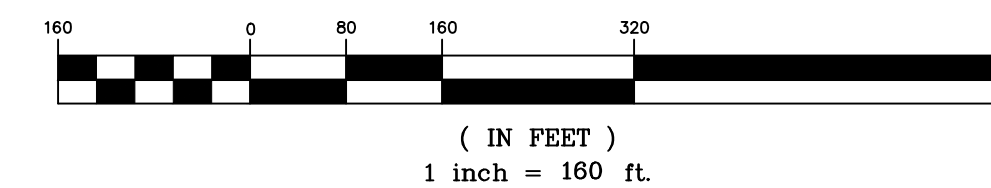
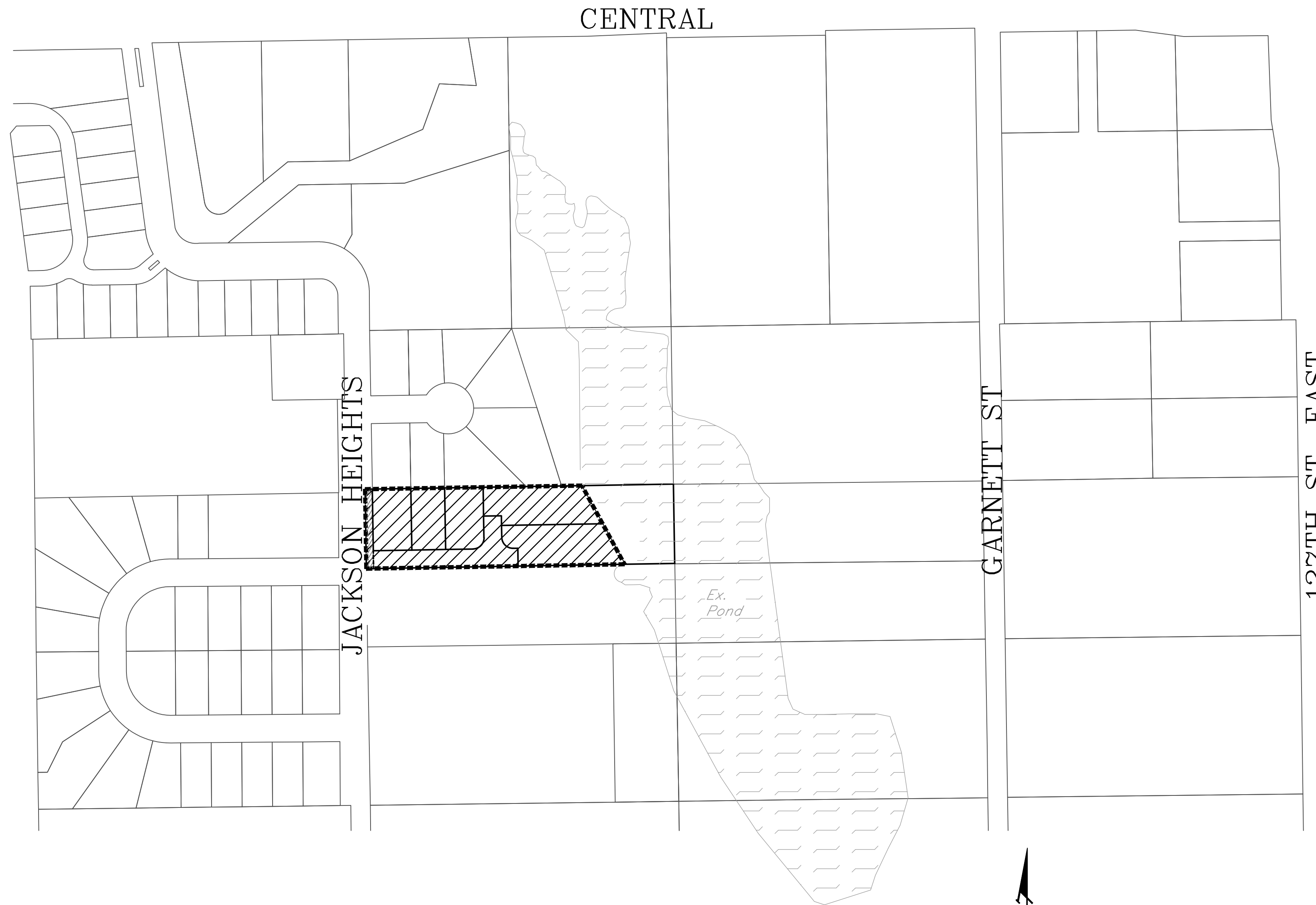
Disturbed Area (Acres) = 1.60

Water Quality Treatment: COW Off-Site BMP Program

Downstream Channel Protection: N/A

Detention: Existing Pond

The BMP used for this development is COW Off-Site BMP Program



January 2021