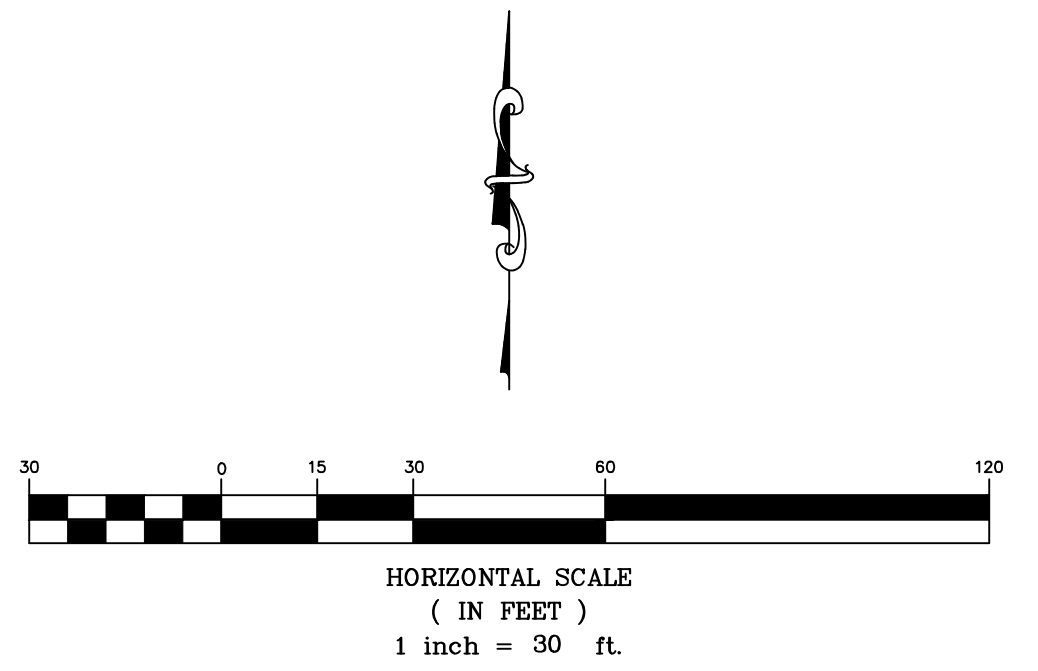
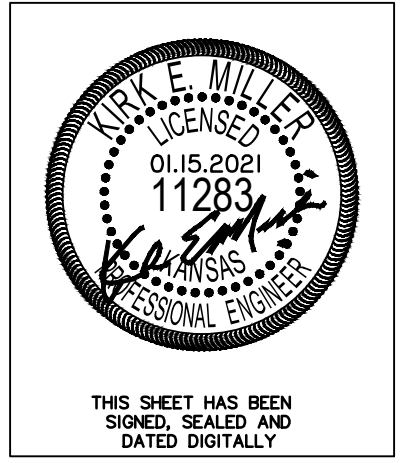


● Control Points

Point #	Northing	Easting	Desc.	BL Station	Offset
1	1688067.63	1689526.04	BM: Mag Nail	0+04.58	+186.33 Lt
2	1687863.09	1689544.83	3/4" Iron Pipe	0+19.90	+18.50 Rt
3	1687863.34	1689559.83	5/8" Rebar	0+34.90	+18.50 Rt
4	1687900.34	1689559.24	1/2" Rebar	0+34.94	+18.50 Lt
5	1688028.39	1689557.20	1/2" Rebar	0+35.07	+146.57 Lt
6	1688034.75	1689941.89	1/2" Rebar	4+19.81	+146.42 Lt
7	1687871.80	1690059.63	1/2" Rebar	5+34.77	+18.50 Rt
8	1687903.84	1689766.35	1/2" Rebar	2+42.08	+18.50 Lt
9	1687927.22	1689788.94	1/2" Rebar	2+65.07	+41.49 Lt
10	1687972.21	1689788.18	1/2" Rebar	2+65.07	+86.49 Lt
11	1687972.84	1689825.18	1/2" Rebar	3+02.07	+86.49 Lt
12	1687927.84	1689825.94	1/2" Rebar	3+02.07	+41.49 Lt
13	1687905.25	1689849.27	1/2" Rebar	3+25.02	+18.50 Lt
14	1687905.41	1689859.26	1/2" Rebar	3+35.01	+18.50 Lt

⊕ SWS & Paving Control Points

Point #	Northing	Easting	Desc.	BL Station	Offset
20	1688024.28	1689792.46	Sta 0+00 Line 1: Backyard Inlet	2+70.21	+138.5 Lt
21	1687959.83	1689794.89	Sta 0+64.49 Line 1: Curb Inlet	2+71.57	+74.0 Lt
22	1687873.82	1689794.98	Sta 1+51.84 Line 1: Curb Inlet	2+70.21	+12.0 Rt
23	1687886.05	1689808.14	℄ Jackson Heights Ct.	2+83.57	-



**Marinita 2nd Addition  
Control Map  
Wichita, Kansas**

<b>KEMILLER</b> ENGINEERING P.A. <small>117 E. Lewis, Wichita, KS 67202 (316)264-0242</small>	PROJECT NUMBER			<b>2.0</b>
	KEM NO. 20023	FILE PAVING	DATE 08/2020	
DESIGN KM	DRAWN ZS	REVISED 01/15/2021		

January 15, 2021