

# WATER DISTRIBUTION SYSTEM & SANITARY SEWER

to serve

## Lincoln Street (and Vassar Water) CITY OF WICHITA, KANSAS

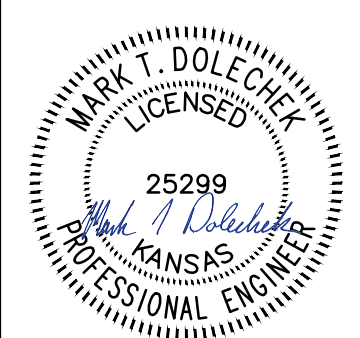
Gary Janzen, P.E. City Engineer  
WATER: Project No. 448-90912 O.C.A. No. 638106  
SANITARY SEWER: Project No. 468-85344 O.C.A. No. 628100

Project Engineer: Greg Baalman  
Project Inspector: Christopher M Stone  
Contractor: Dondlinger & Sons Construction Co., Inc  
Project Manager: Joe Dinsmore  
Foreman: Billy Budd  
Sub contractors: Kansas Paving  
Cillessen and Sons  
Sanitary Pipe: 8" PVC SDR-35 JM Eagle 160 psi

As- built  
Release Date (for connection purposes only) : 3/5/20  
Completion Date:  
: apr 7/24/20



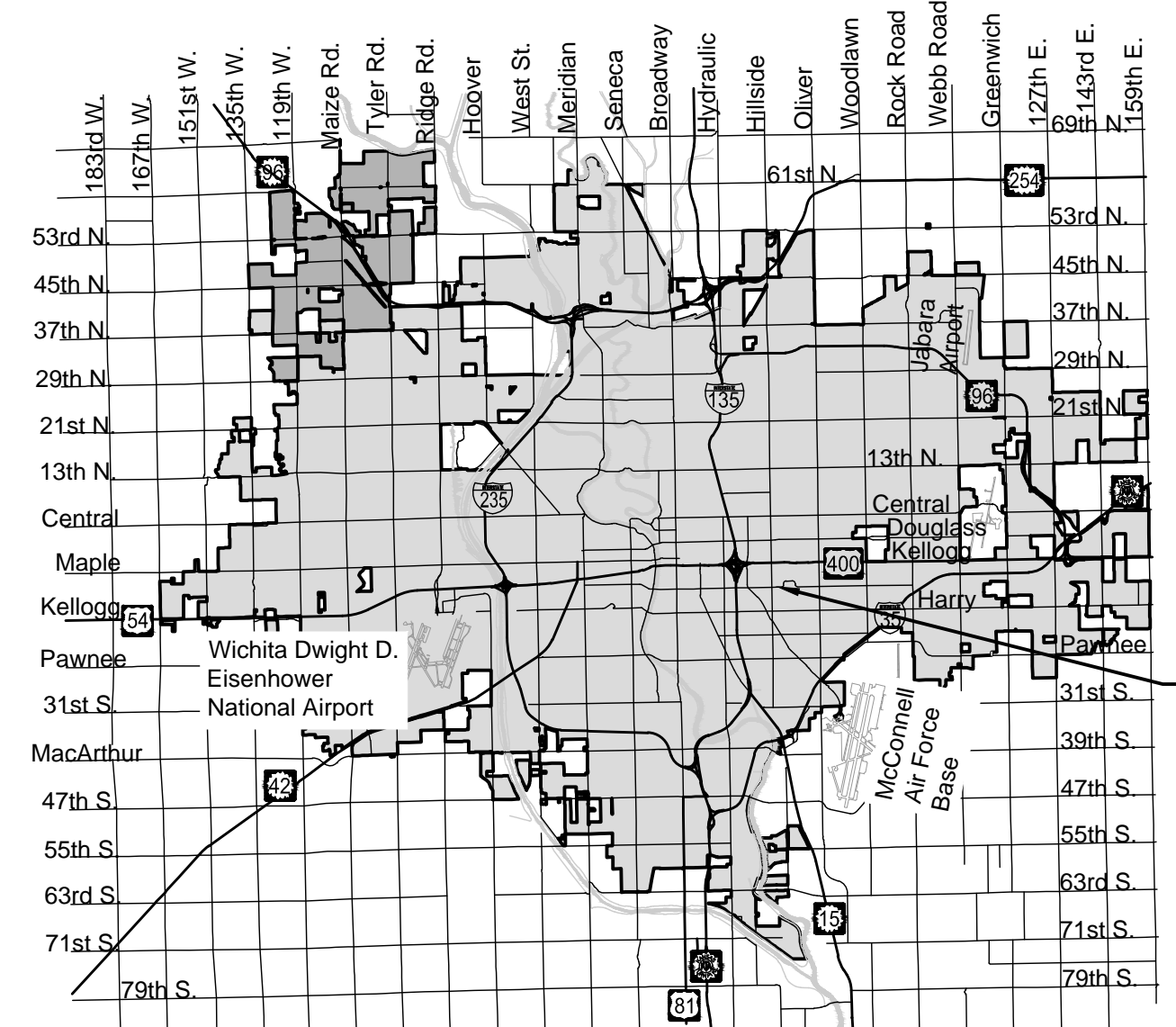
© 2018 GARVER, LLC  
THIS DOCUMENT, ALONG WITH THE IDEAS AND DESIGNS CONVEYED HEREIN, SHALL BE CONSIDERED INSTRUMENTS OF PROFESSIONAL SERVICE AND ARE PROPERTY OF GARVER, LLC. ANY USE, REPRODUCTION, OR DISTRIBUTION OF THIS DOCUMENT, ALONG WITH THE IDEAS AND DESIGN CONTAINED HEREIN, IS PROHIBITED UNLESS AUTHORIZED IN WRITING BY GARVER, LLC OR EXPLICITLY ALLOWED IN THE GOVERNING PROFESSIONAL SERVICES AGREEMENT FOR THIS WORK.



Digitally Signed 04/11/2019

Sheet List Table	
Sheet Number	Sheet Title
1	Coversheet
2	General Notes
3	Pre-Cast SS MH
4	MH Frame & Cover
5	Cleanout Riser
6	Water Assembly Details-Table
7	Water Service Details
8	Sanitary Sewer Lines 1 & 2
9	Sanitary Sewer Line 3
10	Sanitary Sewer Line 3A
11	Water Line 1 (1 of 3)
12	Water Line 1 (2 of 3)
13	Water Line 1 (3 of 3)
14	Water Line 1A-1B
15	Water Line 1C
16	Water Line 2 (1 of 2)
17	Water Line 2 (2 of 2)
18	Std. BMP Detail - BOC
19	Std. BMP Detail - Silt Fc
20	Std. BMP Detail - Straw Bale
21	Std. BMP Detail - SIP
22	Std. BMP Detail - SDP

Paving details can be found at:  
<http://www.wichita.gov/PWU/Pages/Regulations.aspx>

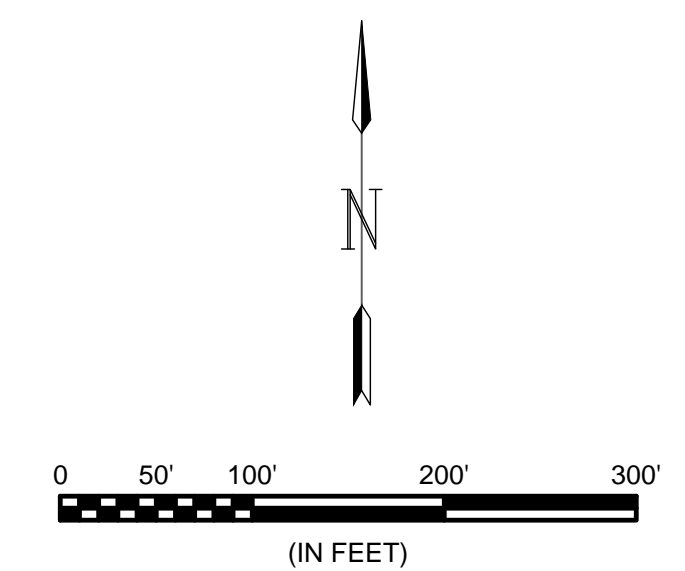


Vicinity Map

### Benchmarks

BENCHMARK:  
CHISELED SQUARE ON SOUTH CURB RETURN OF ENTRANCE INTO THE CONGREGATION OF ST. JOSEPH  
ELEVATION = 1325.08 (NAVD88)

BENCHMARK:  
CHISELED SQUARE ON TOP OF CURB @ SOUTH CURB RETURN AT THE SE COR. OF HILLSIDE & LINCOLN.  
ELEVATION = 1296.02 (NAVD88)



GARVER PROJECT NO. 18267014  
JAN. 2019

PLANS PREPARED BY



GARVER  
8535 E. 21st Street N.  
Suite 130  
Wichita, KS 67206  
(316) 264-8008  
[www.GarverUSA.com](http://www.GarverUSA.com)

REV.	DATE	DESCRIPTION	BY



CITY OF WICHITA  
WICHITA, KANSAS  
LINCOLN STREET  
WATER AND  
SANITARY SEWER

### Coversheet

JOB NO.: 18267014  
DATE: JAN. 2019  
DESIGNED BY: MTD  
DRAWN BY: DRS

BAR IS ONE INCH ON ORIGINAL DRAWING  
IF NOT ONE INCH ON THIS SHEET, ADJUST SCALES ACCORDINGLY

DRAWING NUMBER

SHEET NUMBER **1** OF **22**

File: L:\2018\18267014 - Lincoln Street Water and SS\WichitaDrawings\C3D\18267014-Water Details.dwg Last Save: 4/10/2019 5:37 PM Last saved by: MTDolechek  
Last plotted by: Dolechek, Mark T. Plot Style: .... Plot Scale: 1:2,5849 Plot Date: 4/11/2019 9:00 AM Plotter used: None





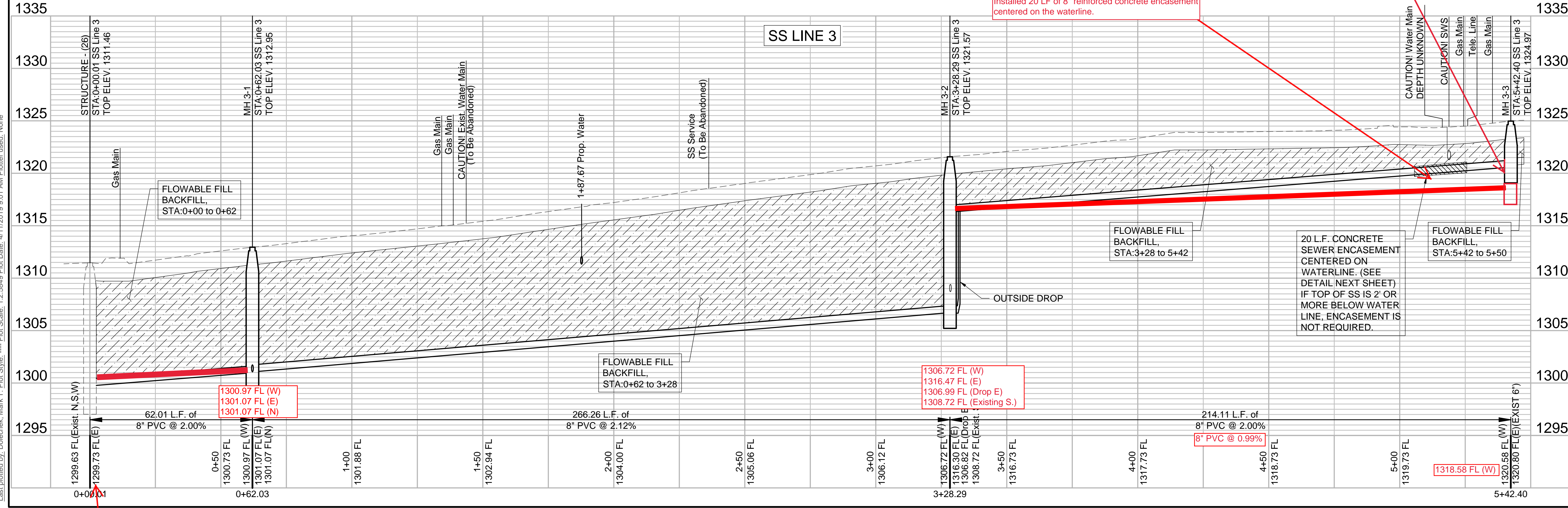
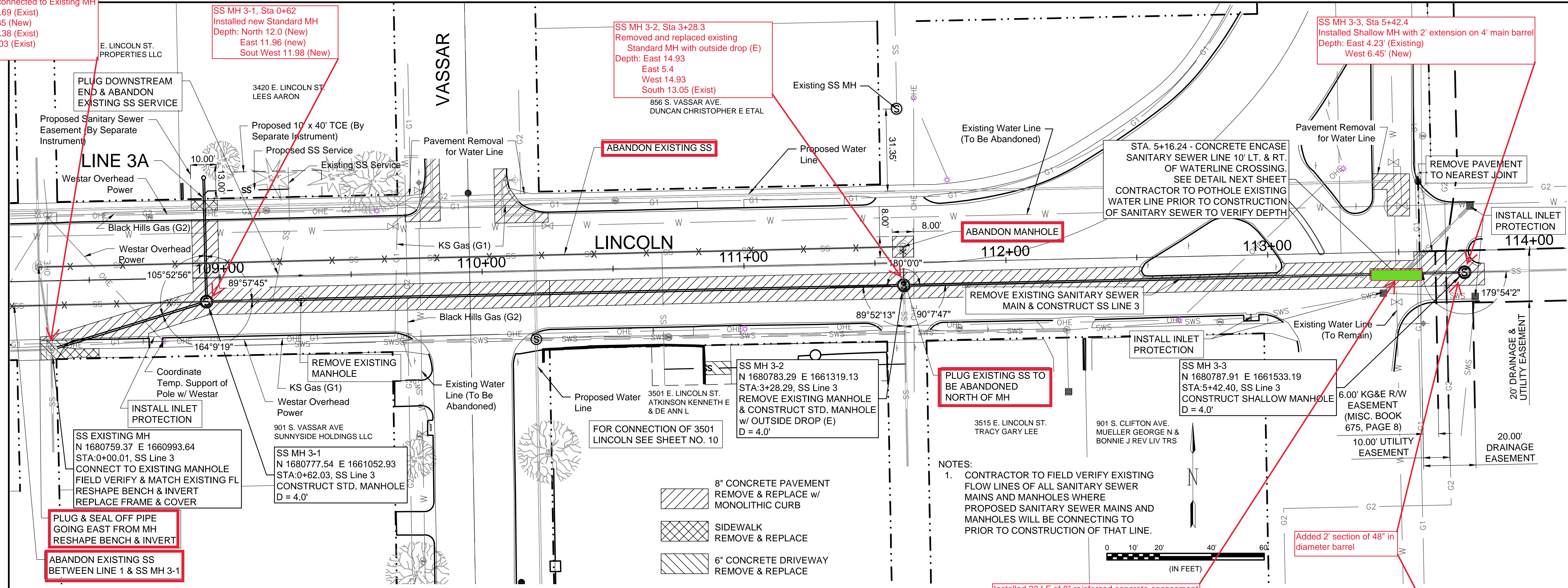
848 S. Holyoke SS Service  
line connection

SS Existing MH 3, Sta 0+00  
Reshaped and connected to Existing MH  
Depth: North 11.69 (Exist)  
East 11.35 (New)  
South 11.38 (Exist)  
West 12.03 (Exist)

SS MH 3-1, Sta 0+62  
Installed new Standard MH  
Depth: North 12.0 (New)  
East 11.96 (new)  
Sout West 11.98 (New)

SS MH 3-2, Sta 3+28.3  
Removed and replaced existing  
Standard MH with outside drop (E)  
Depth: East 14.93  
East 5.4  
West 14.93  
South 13.05 (Exist)

SS MH 3-3, Sta 5+42.4  
Installed Shallow MH with 2' extension on 4' main barrel  
Depth: East 4.23' (Existing)  
West 6.45' (New)



- 8" CONCRETE PAVEMENT REMOVE & REPLACE w/ MONOLITHIC CURB
- SIDEWALK REMOVE & REPLACE
- 6" CONCRETE DRIVEWAY REMOVE & REPLACE

NOTES:  
1. CONTRACTOR TO FIELD VERIFY EXISTING FLOW LINES OF ALL SANITARY SEWER MAINS AND MANHOLES WHERE PROPOSED SANITARY SEWER MAINS AND MANHOLES WILL BE CONNECTING TO PRIOR TO CONSTRUCTION OF THAT LINE.



**GARVER**  
© 2018 GARVER, LLC  
THIS DOCUMENT, ALONG WITH THE IDEAS AND DESIGNS CONVEYED HEREIN, SHALL BE CONSIDERED INSTRUMENTS OF PROFESSIONAL SERVICE AND ARE PROPERTY OF GARVER, LLC. ANY USE, REPRODUCTION, OR DISTRIBUTION OF THIS DOCUMENT, ALONG WITH THE IDEAS AND DESIGN CONTAINED HEREIN, IS PROHIBITED UNLESS AUTHORIZED IN WRITING BY GARVER, LLC OR EXPLICITLY ALLOWED IN THE GOVERNING PROFESSIONAL SERVICES AGREEMENT FOR THIS WORK.

MARK T. DOLECHEK  
LICENSED  
25299  
KANSAS  
PROFESSIONAL ENGINEER  
Digitally Signed 04/11/2019

REV.	DATE	DESCRIPTION	BY
1	4-10-19	Added address & owner info	MTD



CITY OF WICHITA  
WICHITA, KANSAS  
LINCOLN STREET WATER AND SANITARY SEWER

Sanitary Sewer Line 3

JOB NO.: 18267014  
DATE: JAN. 2019  
DESIGNED BY: MTD  
DRAWN BY: DRS

BAR IS ONE INCH ON ORIGINAL DRAWING  
IF NOT ONE INCH ON THIS SHEET, ADJUST SCALES ACCORDINGLY

DRAWING NUMBER  
SHEET NUMBER **9** OF **22**

File: L:\2018\18267014 - Lincoln Street Water and SS WichitaDrawings\C3D\SS-3.dwg, Last Save: 4/11/2019 8:58 AM, Last saved by: MTDolechek  
 Last plotted by: Dolechek, Mark T., Plot Style: ----, Plot Date: 4/11/2019 9:01 AM, Plotter used: None



© 2018 GARVER, LLC  
 THIS DOCUMENT, ALONG WITH THE IDEAS AND DESIGNS CONVEYED HEREIN, SHALL BE CONSIDERED INSTRUMENTS OF PROFESSIONAL SERVICE AND ARE PROPERTY OF GARVER, LLC. ANY USE, REPRODUCTION, OR DISTRIBUTION OF THIS DOCUMENT, ALONG WITH THE IDEAS AND DESIGN CONTAINED HEREIN, IS PROHIBITED UNLESS AUTHORIZED IN WRITING BY GARVER, LLC OR EXPLICITLY ALLOWED IN THE GOVERNING PROFESSIONAL SERVICES AGREEMENT FOR THIS WORK.



Digitally Signed 04/11/2019

REV.	DATE	DESCRIPTION	BY
1	4-10-19	Added address & owner info	MTD



CITY OF WICHITA  
 WICHITA, KANSAS  
 LINCOLN STREET  
 WATER AND  
 SANITARY SEWER

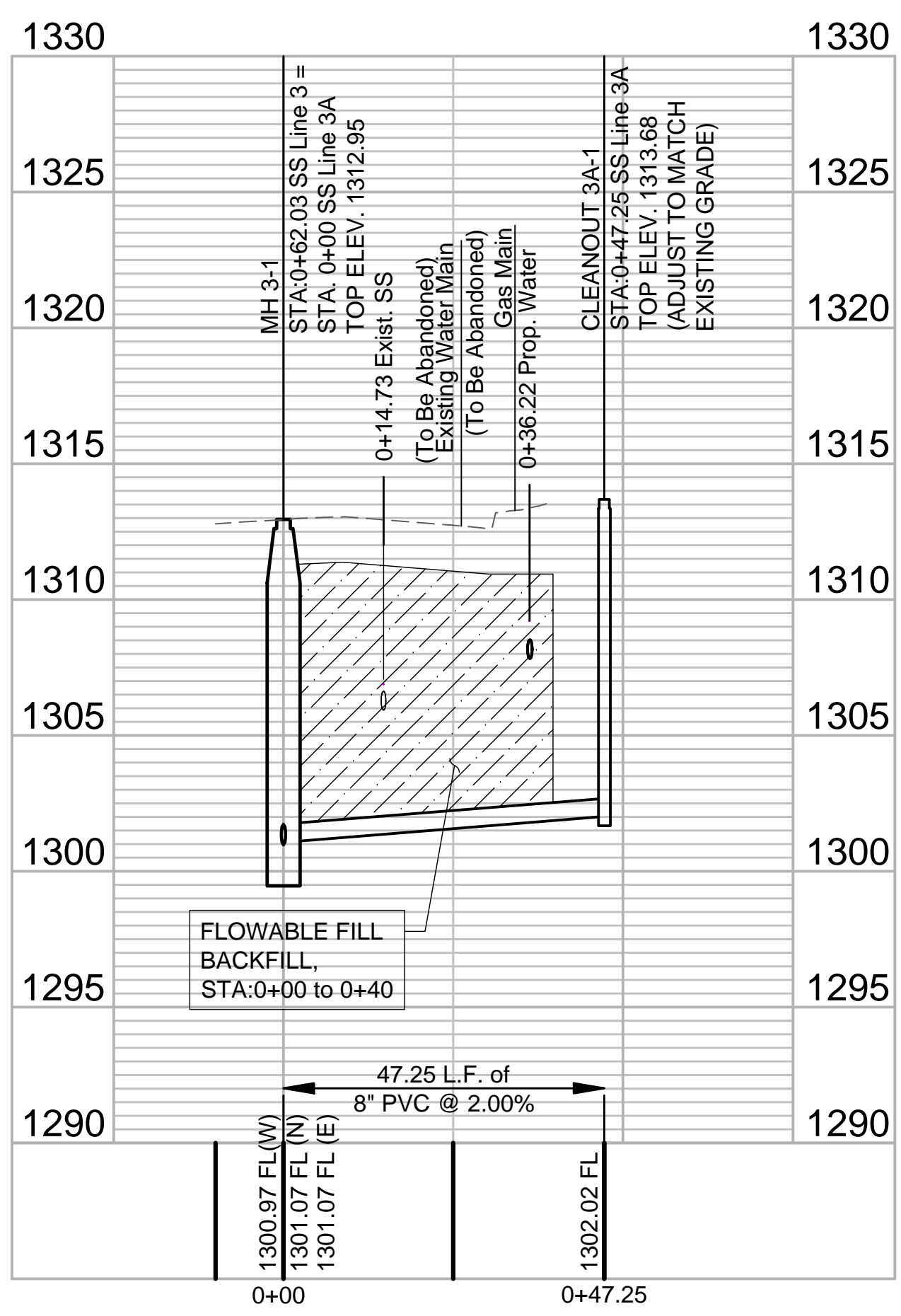
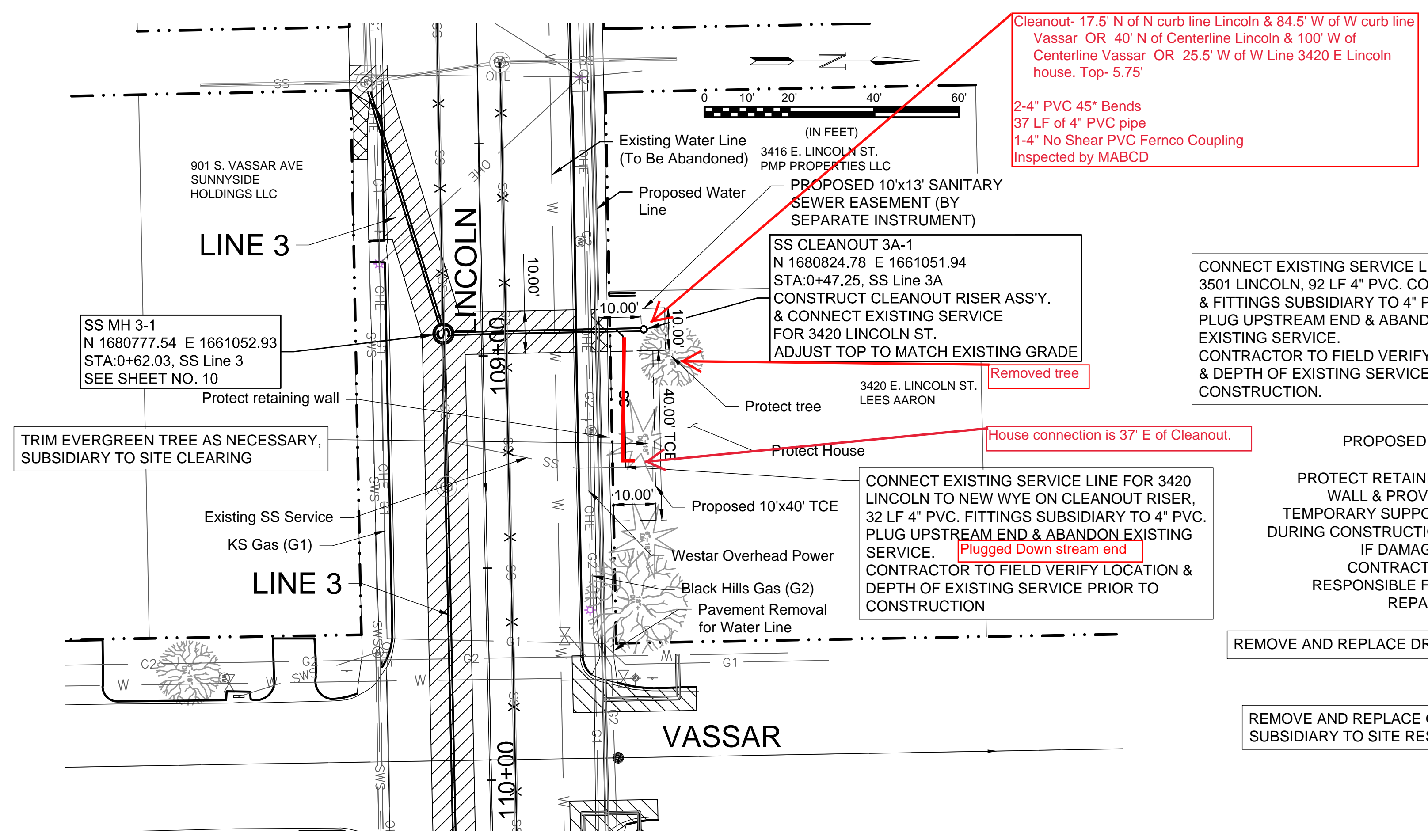
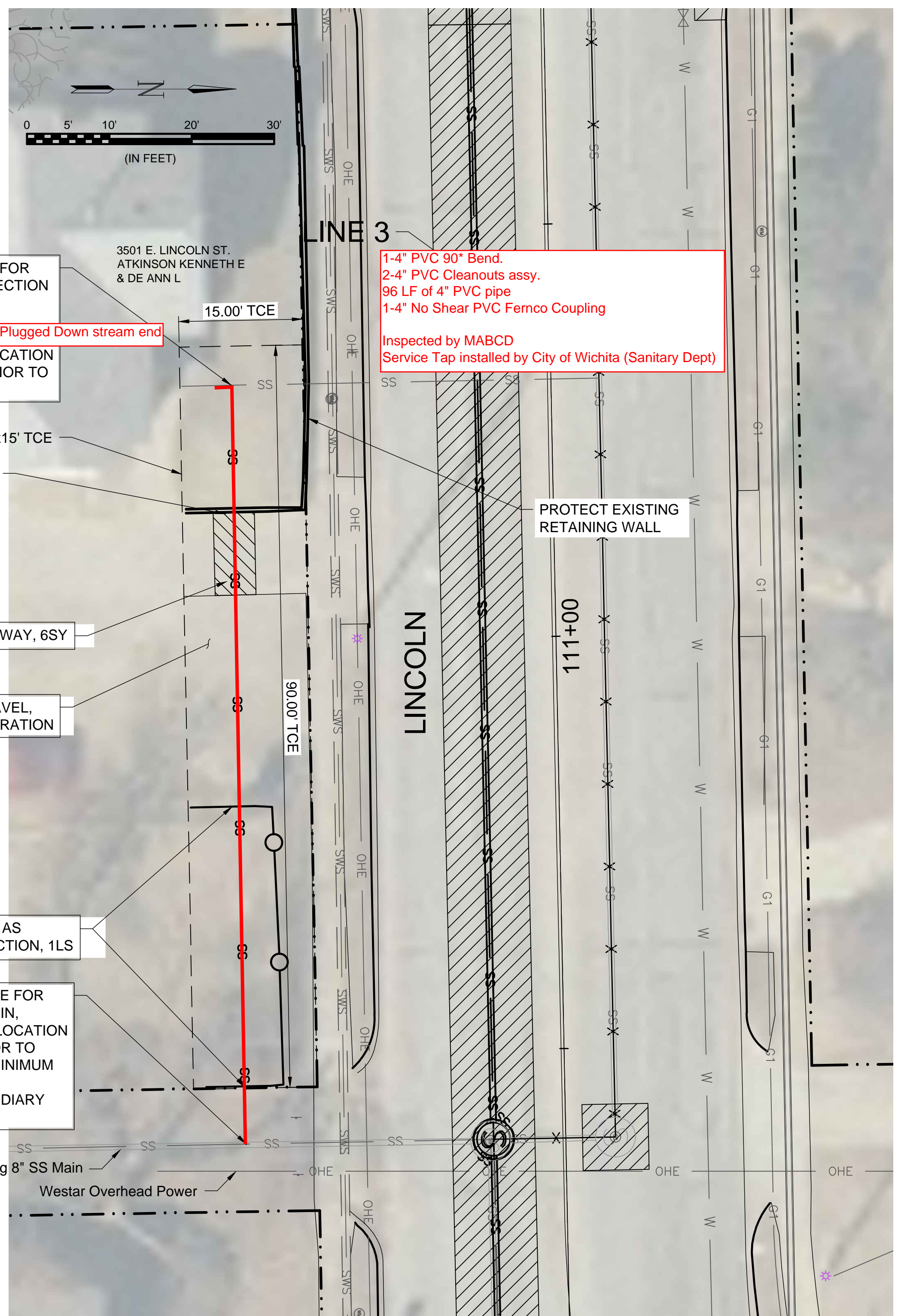
Sanitary Sewer  
 Line 3A

JOB NO.: 18267014  
 DATE: JAN. 2019  
 DESIGNED BY: MTD  
 DRAWN BY: DRS

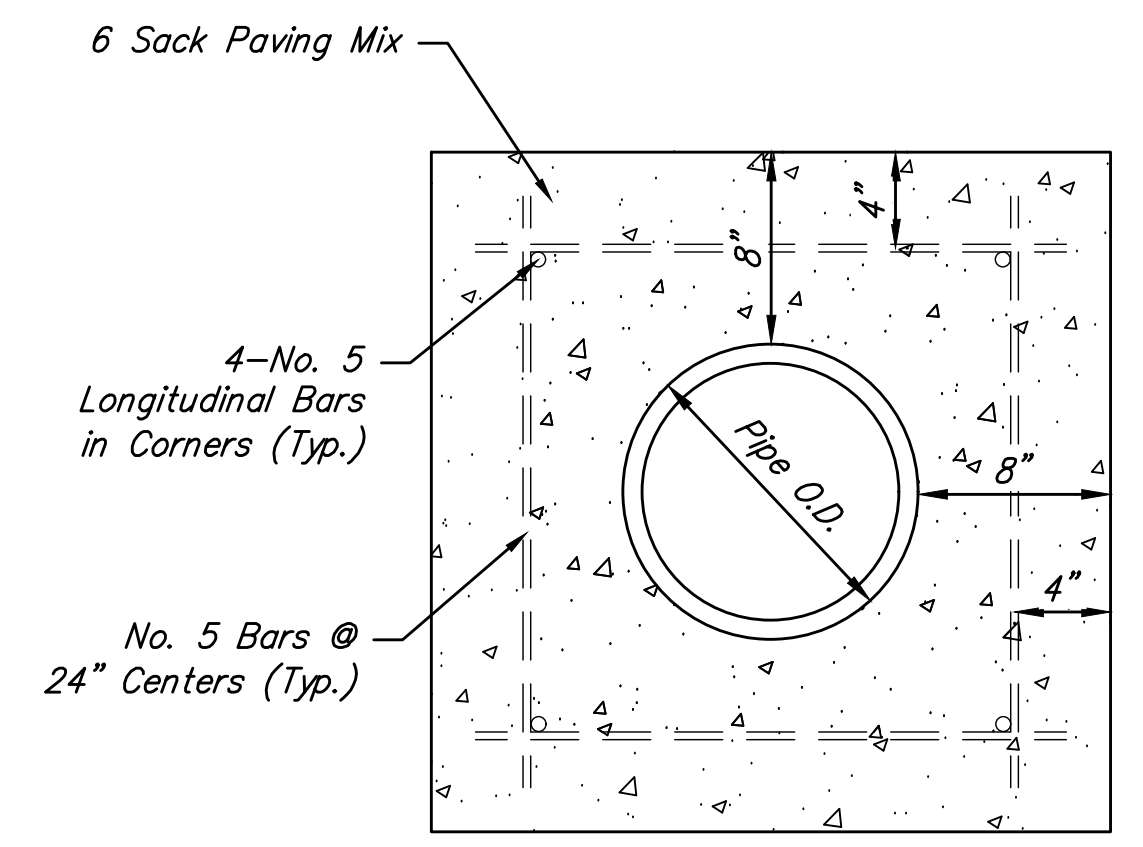
BAR IS ONE INCH ON ORIGINAL DRAWING  
 IF NOT ONE INCH ON THIS SHEET, ADJUST SCALES ACCORDINGLY.

DRAWING NUMBER

SHEET NUMBER **10** OF **22**



- 8" CONCRETE PAVEMENT REMOVE & REPLACE w/ MONOLITHIC CURB
- SIDEWALK REMOVE & REPLACE
- 6" CONCRETE DRIVEWAY REMOVE & REPLACE



File: L:\2018\18267014 - Lincoln Street Water and SS WichitaDrawings\C3D\SS-3.dwg, Last Save: 4/11/2019 8:58 AM, Last saved by: MTDolechek  
 Last plotted by: Dolechek, Mark T., Plot Style: ..., Plot Date: 4/11/2019 9:01 AM, Plotter used: None

