

J:\PROJECTS\2017\1701010587\_COW\_STRYKER\_170567\_CAD\SH1505\_OVALTITLE170567-06-0100.DWG  
 J:\PROJECTS\2017\1701010587\_COW\_STRYKER\_170567\_CAD\SH1505\_OVALTITLE170567-06-0100.DWG  
 PLOTTED: Wednesday, January 10, 2018 @ 09:37AM

# STRYKER SPORTS

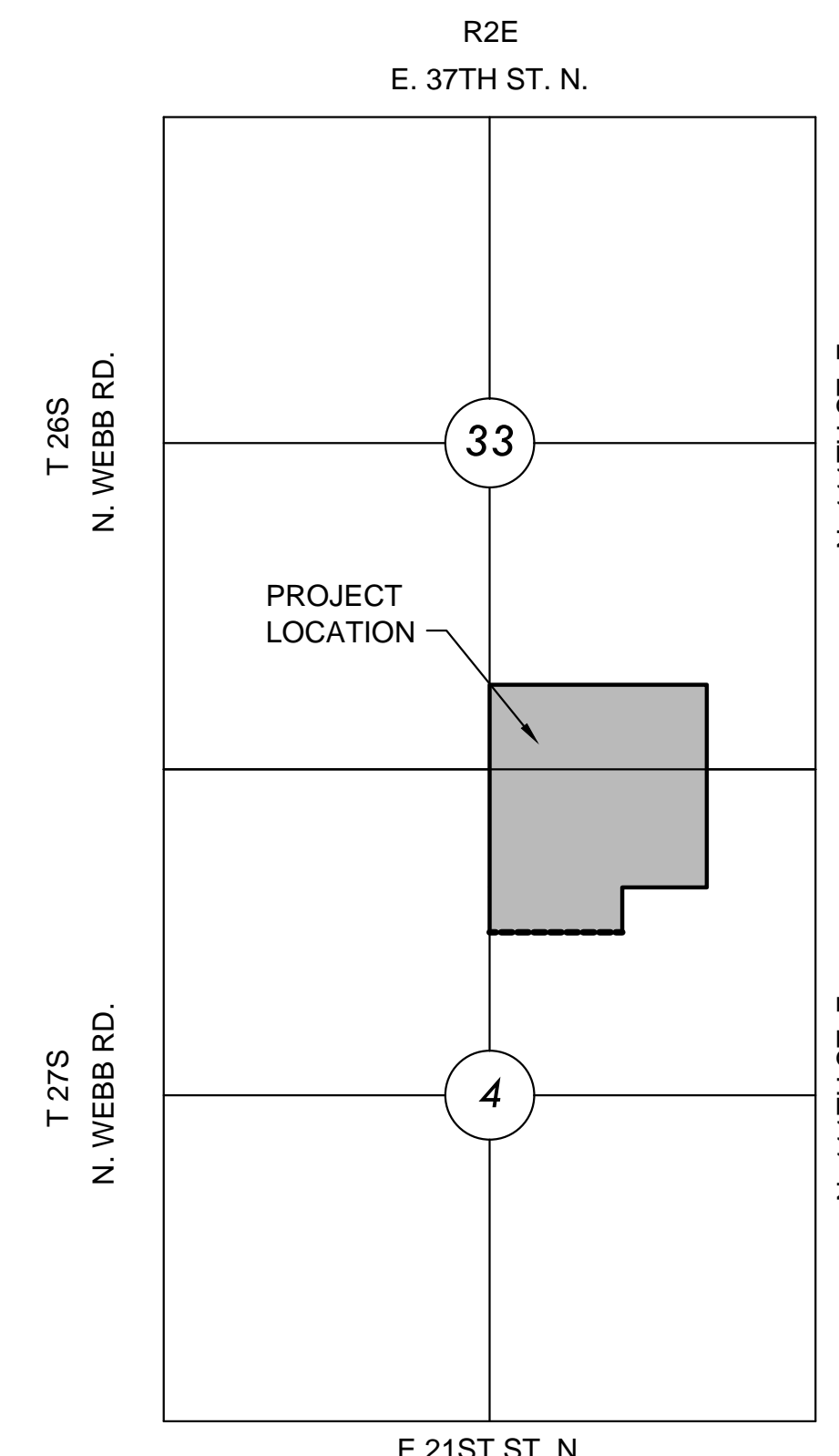
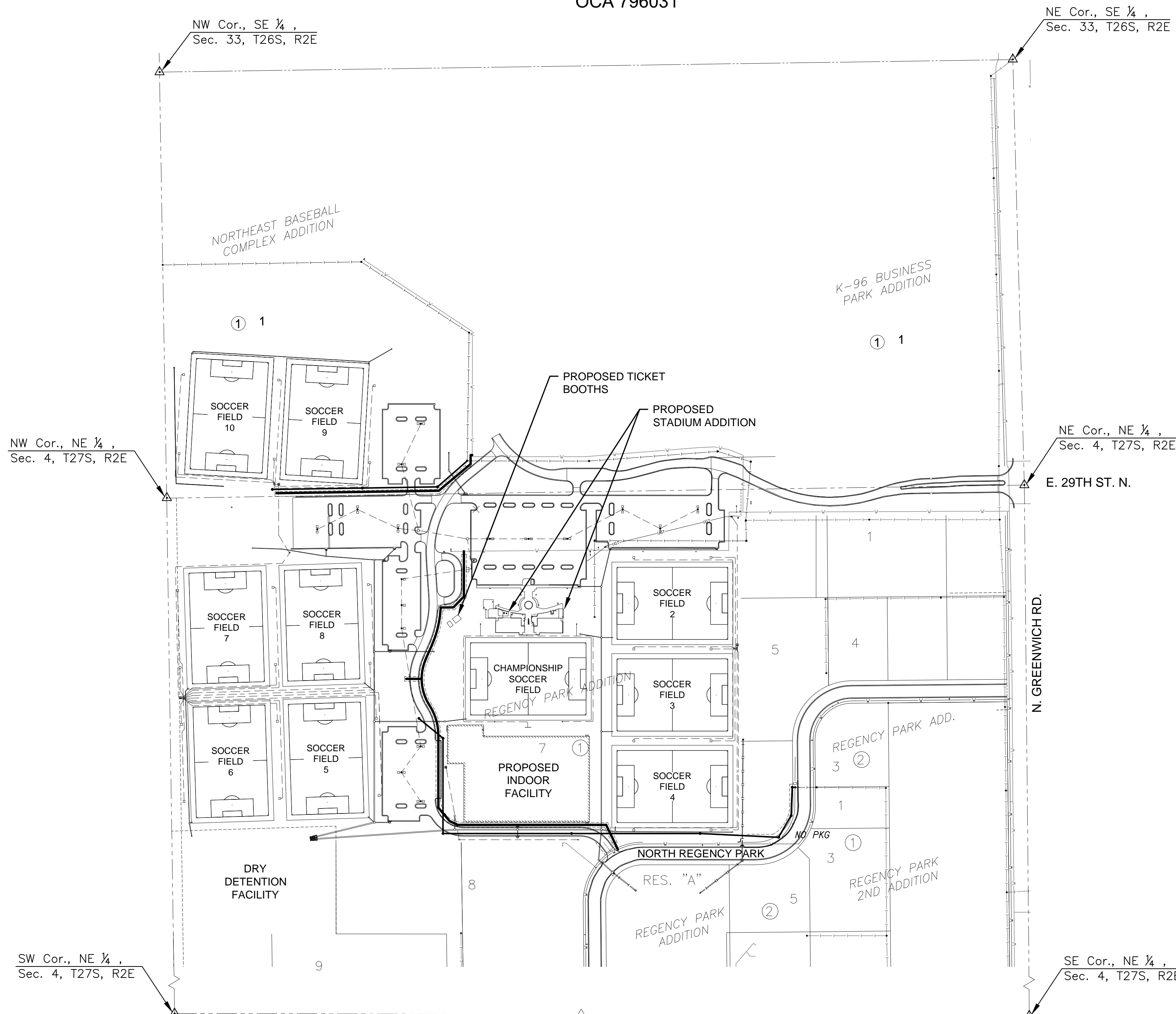
AN ADDITION TO THE CITY OF WICHITA  
 SEDGWICK COUNTY, KANSAS  
 SWD PROJECT NO. 468-85289  
 SANITARY SEWER PROJECT NO. 468-85287 ←  
 WATER LINE PROJECT NO. 448-90870  
 STORM WATER SEWER PROJECT NO. 468-85288  
 OCA 796031

Note: Project released for tap purposes only.

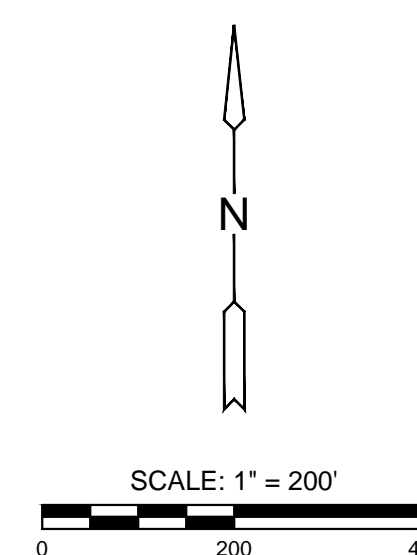
National Builders, Inc. - Contractor  
 S. Degenhardt - City of Wichita, Field Project Engineer  
 As-built  
 Release Date: 7/6/2018  
 Completion Date:  
 pdf: 8/29/2018 apr

## SHEET INDEX

SHEET NO.	DESCRIPTION
01	TITLE SHEET
02	GENERAL NOTES
03	EXISTING CONDITIONS PLAN
04	DEMOLITION PLAN
05	GRADING SHEET LOCATION MAP
06	GRADING DETAILS
07-16	GRADING PLANS
17	SANITARY SEWER LAYOUT MAP
18	MANHOLE DETAILS
19	MANHOLE COVER DETAILS
20-21	SANITARY LINE 1
22	SANITARY LINE 2
23	SANITARY BUBBLE MAP
24	WATER LAYOUT MAP
25	FIRE HYDRANT DETAILS
26	MISC WATER DETAIL
27-28	WATER LINE 1
29	WATER LINE 2
30	WATER BUBBLE MAP
31	SWS LAYOUT MAP
32-36	SWS DETAILS
37-39	SWS LINE 1
40	SWS LINE 1A, 1B, & 1C
41	SWS LINE 1D & 1E
42-43	SWS LINE 2
44	SWS LINE 2A, 2B & 2C
45-47	SWS LINE 3
48	SWS LINE 3A & 3B
49	SWS LINE 4
50	SWS LINE 5
51-52	SWS LINE 6
53	SWS LINE 7
54	SWS LINE 8
55	BUBBLE MAP
56	EROSION CONTROL PLAN
57-61	BMP'S
62	ELECTRICAL COVERSHEET
63-66	ELECTRICAL SITE PLANS
67	ELECTRICAL DETAILS
68-69	REGENCY PARK PLAT
70	NORTHEAST BASEBALL COMPLEX



VICINITY MAP  
No Scale



GRADING & UTILITIES PLANS FOR  
**STRYKER SPORTS**  
 WICHITA, KANSAS



©2018  
 MKEC Engineering  
 All Rights Reserved  
 www.mkec.com  
 These drawings and their contents, including, but not limited to, all concepts, designs, & ideas are the exclusive property of MKEC Engineering (MKEC), and may not be used or reproduced in any way without the express consent of MKEC.

### TITLE SHEET

PROJECT NO.	170567
DATE	01-10-18
SCALE	1" = 200'
DESIGNED	DFL
DRAWN	DFL
CHECKED	MAB

0	ISSUE FOR CONST.	01-10-18
NO.	REVISION	DATE

SHEET NO.  
 01 OF 70

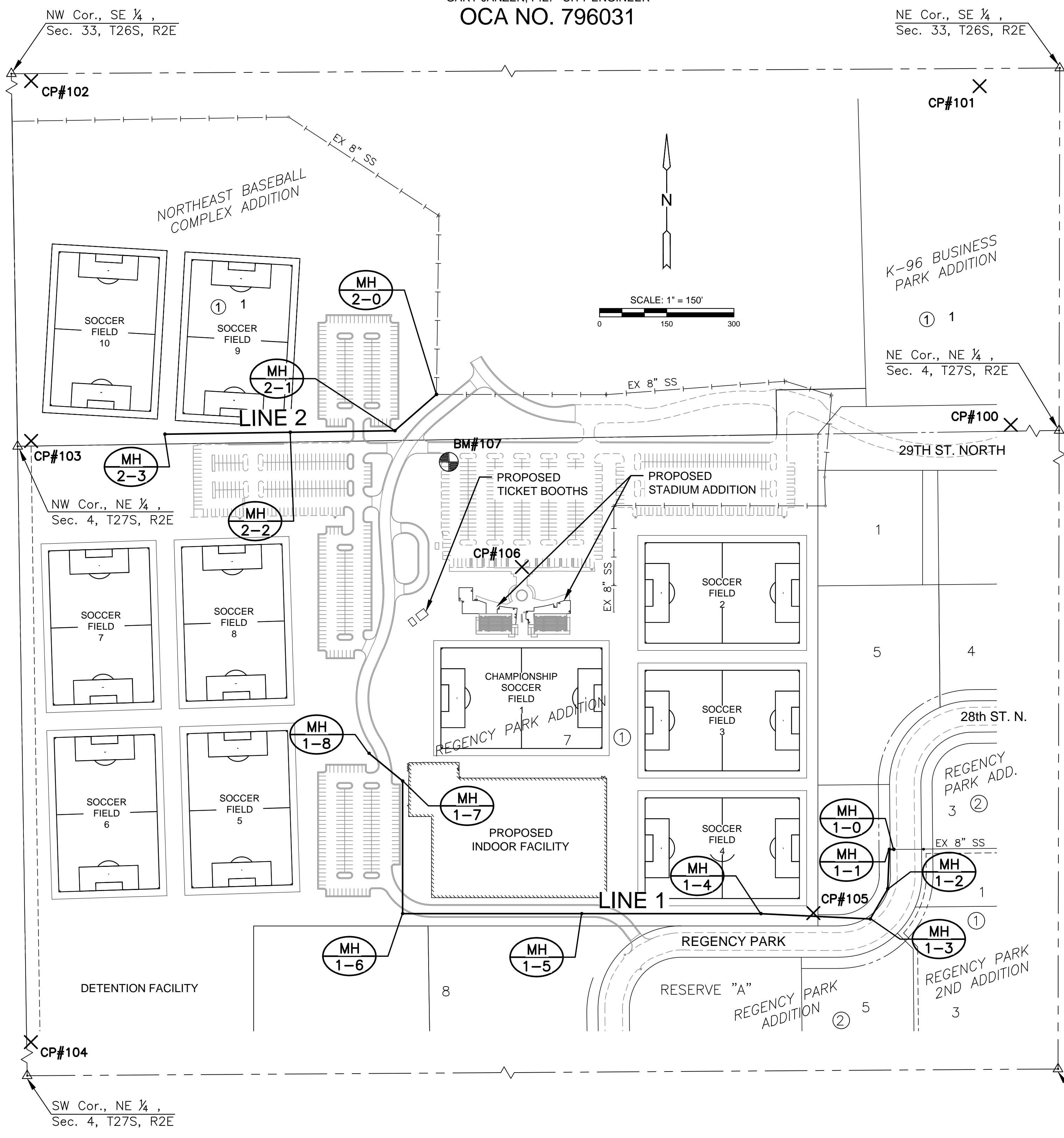
# SANITARY SEWER EXTENSION TO SERVE STRYKER SPORTS

PROJECT NO. 468-85287  
THE CITY OF WICHITA, KANSAS  
GARY JANZEN, P.E. - CITY ENGINEER  
OCA NO. 796031

## GENERAL NOTES

1. THE CONTRACTOR SHALL COMPLY WITH ALL APPLICABLE SAFETY REGULATIONS. ALL CONSTRUCTION SHALL BE COMPLETED FOLLOWING CURRENT CITY STANDARD SPECIFICATIONS AND SPECIAL PROVISIONS.
2. CONTRACTOR WILL BE REQUIRED TO PROVIDE NOTICE TO UTILITY COMPANIES A MINIMUM OF SEVENTY-TWO (72) HOURS PRIOR TO ANY EXCAVATION, AS FOLLOWS:  
  
KANSAS ONE-CALL 687-2470  
  
THE CONTRACTOR MUST NOTIFY THE FOLLOWING IN CASE OF AN EMERGENCY:  
  

AT&T	1-800-246-8464
BLACK HILLS ENERGY (GAS)	1-800-694-9999
CITY OF WICHITA WATER & SEWER	1-316-219-8921
CITY OF WICHITA STORMWATER	1-316-268-4090
CITY OF WICHITA TRAFFIC	1-316-268-4034
COX COMMUNICATIONS	1-888-249-3530
KANSAS GAS SERVICE	1-888-482-4950
WESTAR ENERGY	1-800-544-4857
3. UTILITY SERVICE LINES, POLES, ETC. ARE TO BE ADJUSTED AS NECESSARY BY OTHERS PRIOR TO CONSTRUCTION UNLESS THE PLANS SPECIFICALLY CALL FOR THEIR ADJUSTMENT BY THE CONTRACTOR OR UNLESS THE PLANS SPECIFICALLY IDENTIFY A UTILITY TO BE ADJUSTED BY ITS OWNER DURING CONSTRUCTION. EXISTING UTILITIES AND THEIR LOCATION, AS SHOWN ON THE PLANS, REPRESENT THE BEST INFORMATION OBTAINABLE FOR DESIGN. THE CONTRACTOR WILL BE REQUIRED TO WORK AROUND EXISTING UTILITIES WITHIN THE RIGHT-OF-WAY WHICH DO NOT CONFLICT WITH PROPOSED CONSTRUCTION.
4. RUBBLE FROM THE REMOVAL OF MISCELLANEOUS STRUCTURES AND EXCESS EXCAVATION WHICH IS TO BE WASTED SHALL BE DISPOSED OF ON SITES TO BE PROVIDED BY THE CONTRACTOR. THESE SITES SHALL BE APPROVED BY THE ENGINEER AS TO SUITABILITY, APPEARANCE AND SITE LOCATION. LOCATIONS, IN THE OPINION OF THE ENGINEER, THAT WILL LEAVE AN UNSIGHTLY APPEARANCE WILL NOT BE APPROVED. ALL DISPOSAL SITES MUST BE APPROVED BY THE KANSAS DEPARTMENT OF HEALTH AND ENVIRONMENT. MATERIAL EITHER STOCKPILED OR DISPOSED OF IN A FLOOD PLAIN WILL REQUIRE A KANSAS STATE BOARD OF AGRICULTURE PERMIT. ANY MATERIAL DUMPED IN WATERS OF THE UNITED STATES OR WETLANDS IS SUBJECT TO U.S. CORPS OF ENGINEERS PERMITTING REGULATIONS. ANY MATERIAL BURIED OR STOCKPILED BEYOND APPROVED CONSTRUCTION LIMITS WILL REQUIRE ADDITIONAL ARCHAEOLOGICAL INVESTIGATIONS UNLESS BURIED IN A PREVIOUSLY APPROVED BORROW LOCATION.
5. TREES AND SHRUBS IN PUBLIC RIGHT-OF-WAY WHICH ARE IN DIRECT CONFLICT WITH PROPOSED NEW CONSTRUCTION SHALL BE REMOVED BY THE CONTRACTOR WITH THE CITY ENGINEER'S APPROVAL. TREES AND SHRUBS WHICH ARE NOT IN DIRECT CONFLICT WITH PROPOSED NEW CONSTRUCTION SHALL BE SAVED AND PROTECTED FROM DAMAGE.
6. THE CONTRACTOR SHALL GIVE ALL PROPERTY OWNERS AND/OR TENANTS OF DEVELOPED PROPERTY ABUTTING THE CONSTRUCTION OF THIS PROJECT A MINIMUM OF TEN (10) DAYS NOTICE PRIOR TO START OF CONSTRUCTION.
7. THE CONTRACTOR SHALL BE RESPONSIBLE FOR PRESERVING PROPERTY IRONS. THE CONTRACTOR WILL BE REQUIRED TO RE-ESTABLISH ANY PROPERTY IRONS WHICH ARE DAMAGED OR DESTROYED BY HIS CONSTRUCTION OPERATIONS. SUCH IRONS SHALL BE RE-ESTABLISHED BY A LICENSED LAND SURVEYOR IN ACCORDANCE WITH STATE LAWS.
8. THE ENGINEERING DIVISION SHALL FIELD LOCATE WATER VALVES ONE TIME DURING CONSTRUCTION WHEN REQUESTED BY THE CONTRACTOR. IT SHALL BE THE CONTRACTOR'S RESPONSIBILITY TO PRESERVE SUCH FIELD LOCATIONS DURING THE CONSTRUCTION PROCESS. WATER VALVES, VALVE BOXES OR FIRE HYDRANTS DAMAGED DURING CONSTRUCTION SHALL BE REPAIRED BY CONTRACTOR AT HIS OWN EXPENSE. VALVE BOXES AND WATER METERS WITHIN THE PROJECT LIMITS SHALL BE ADJUSTED TO MATCH FIELD GRADES BY THE CONTRACTOR.
9. IF TRAFFIC WILL BE IMPACTED BY CONSTRUCTION, A TRAFFIC CONTROL PLAN MUST BE SUBMITTED AND APPROVED BY THE CITY TRAFFIC ENGINEER, BRIAN COON AT [traffic@wichita.gov](mailto:traffic@wichita.gov) BEFORE CONSTRUCTION CAN BEGIN. THE CONTRACTOR SHALL BE RESPONSIBLE FOR ALL TRAFFIC CONTROL MEASURES TO FACILITATE CONSTRUCTION. ALL CONSTRUCTION ZONE MARKINGS AND SIGNAGE SHALL CONFORM TO THE LATEST VERSION OF THE MANUAL ON UNIFORM TRAFFIC CONTROL DEVICES (MUTCD) AS PUBLISHED BY THE US DEPT. OF TRANSPORTATION, FEDERAL HIGHWAY ADMINISTRATION. ALL COSTS ASSOCIATED WITH CONSTRUCTION MARKINGS AND SIGNAGE SHALL BE THE CONTRACTOR'S RESPONSIBILITY.
10. ALL AREAS DISTURBED DURING CONSTRUCTION THAT WILL NOT BE UNDER PROPOSED PAVEMENT SHALL BE SEEDED AND MULCHED. COST SHALL BE CONSIDERED SUBSIDIARY TO PROJECT SEEDING.
11. CONTRACTOR SHALL LIMIT THE EXTENT OF TRENCH OPEN OVERNIGHT AND WEEKENDS TO LESS THAN 50 FEET.
12. EXISTING UTILITIES AND THEIR LOCATION, AS SHOWN ON THE PLANS REPRESENT THE BEST INFORMATION OBTAINABLE FOR DESIGN. LOCATION INFORMATION HAS BEEN OBTAINED FROM THE VARIOUS COMPANIES AND IS EITHER FROM COMPANY UTILITY DRAWINGS OR COMPANY PROVIDED FIELD LOCATIONS. THE PLAN LOCATIONS SHOWN ARE NOT GUARANTEED. ADDITIONAL EXISTING UTILITIES MAY ALSO BE ENCOUNTERED.
13. A PORTION OF EXCESS EXCAVATED MATERIAL SHALL BE MOUNDED AROUND MANHOLES WHICH EXTEND MORE THAN ONE (1) FOOT ABOVE THE EXISTING GROUND. SUCH MOUND SHALL BE CONSTRUCTED WITH NEW DEVELOPMENT A SIX (6) FOOT DIAMETER FLAT TOP WITH 4 TO 1 SIDE SLOPES DOWN TO THE ORIGINAL GROUND. THE ELEVATION OF THE FLAT TOP OF THE MOUND SHALL BE 0.4 FOOT BELOW THE TOP OF THE MANHOLE.
14. CONTRACTOR SHALL PROVIDE POSITIVE DRAINAGE AWAY FROM ALL MANHOLE COVERS.
15. ALL STUBS AND PLUGGED PIPES SHALL BE LOCATED WITH GREEN PLASTIC TAPE IN THE SAME MANNER AS RISERS.
16. CONNECTING TO EXISTING MANHOLES:  
PRIOR TO LAYING SEWER LINES USING EXISTING STUBS IN EXISTING MANHOLES, THE CONTRACTOR SHALL EXPOSE AND VERIFY THE ELEVATION, GRADE AND ALIGNMENT OF EXISTING STUBS AND NOTIFY THE ENGINEER OF ANY DEVIATION FROM THE PLANS. WHERE CONNECTION TO AN EXISTING MANHOLE THAT DOES NOT HAVE AN EXISTING STUB OR THE STUB IS UNUSABLE DUE TO ELEVATION GRADE OR ALIGNMENT, THE CONTRACTOR SHALL BORE CUT INTO EXISTING MANHOLE WALL TO MAKE CONNECTION USING APPROVED WATER STOP GASKET, AND RESHAPE THE EXISTING MANHOLE INVERT TO PROVIDE SMOOTH FLOW. THE COST TO CONNECTING TO EXISTING MANHOLES IS INCIDENTAL TO THE PROJECT.
17. THE CONTRACTOR SHALL PREVENT ANY CONSTRUCTION DEBRIS FROM ENTERING THE EXISTING SANITARY SEWER DURING CONSTRUCTION.
18. THE CONTRACTOR SHALL BE RESPONSIBLE FOR MAINTAINING CONTINUOUS FLOW OF SEWAGE THROUGH CONSTRUCTION. CONTRACTOR'S PROPOSED METHOD FOR MAINTAINING SEWAGE FLOW SHALL BE SUBMITTED AND APPROVED BY THE SEWER MAINTENANCE DIVISION (316-268-4073) PRIOR TO STARTING AND BY-PASSING OF SEWAGE FLOWS.
19. ALL TRAFFIC CONTROL DEVICES IN THE WORK ZONE (INCLUDING MARKINGS AND SIGNS) AND THEIR INSTALLATION AND MAINTENANCE SHALL COMPLY WITH THE LATEST EDITION OF THE MANUAL ON UNIFORM TRAFFIC CONTROL DEVICES (MUTCD). ALL TRAFFIC CONTROL DEVICES IN THE TRAVELED WAY OR CLEAR ZONE SHALL BE CRASHWORTHY (NCHRP REPORT 350 OR MASH COMPLIANT).  
[http://safety.fhwa.dot.gov/roadwaydept/policy\\_guide/road\\_hardware/wzd](http://safety.fhwa.dot.gov/roadwaydept/policy_guide/road_hardware/wzd)
20. ALL CONSTRUCTION EQUIPMENT, INCLUDING VEHICLES, MATERIALS, AND DEBRIS, SHALL BE STORED OUTSIDE OF THE CLEAR ZONE. WHERE THIS CANNOT BE ACHIEVED THE CONTRACTOR SHALL PLACE APPROPRIATE SIGNS, OBJECT IDENTIFIERS, AND/OR BARRICADES IN COMPLIANCE WITH MUTCD.
21. EXCEPT WHEN REQUIRED FOR SAFETY, TRAFFIC CONTROL SHALL NOT BLOCK ANY LANES OR SIDEWALKS WHEN WORK IS NOT BEING PERFORMED.
22. FOLLOW THE LINK BELOW FOR DETAILS ON SPECIFIC CITY OF WICHITA STANDARD DETAILS:  
<http://www.wichita.gov/PWU/Pages/Regulations.aspx>



## CONTROL POINTS

- #100 PLUS CUT ON EAST NOSE OF ISLAND, WEST SIDE OF INTERSECTION GREENWICH RD ON 29TH ST N.  
NORTHING = 1705129.39 EASTING = 1686099.42  
ELEV. = 1390.24' NAVD 88
- #101 5/8" REBAR WITH MKEC ALUMINUM CAP 1330' NORTH OF 29TH ST. N. AND GREENWICH RD. AND 65.5' WEST OF CENTERLINE GREENWICH RD. 15' WEST AND 4' SOUTH OF FENCE CORNER.  
NORTHING = 1706443.68 EASTING = 1686059.91  
ELEV. = 1400.41' NAVD 88
- #102 5/8" REBAR WITH MKEC ALUMINUM CAP 1330' NORTH OF 29TH ST. N. AND 2635' WEST OF GREENWICH RD. 27' SOUTH AND 18' EAST OF FENCE CORNER.  
NORTHING = 1706375.62 EASTING = 1683490.76  
ELEV. = 1393.09' NAVD 88
- #103 5/8" REBAR WITH MKEC ALUMINUM CAP 2630' WEST OF INTERSECTION 29TH ST. N AND GREENWICH RD. 25' EAST AND 12' NORTH OF CHAIN LINK FENCE CORNER  
NORTHING = 1705093.60 EASTING = 1683522.84  
ELEV. = 1391.31' NAVD 88
- #104 5/8" REBAR WITH MKEC ALUMINUM CAP 2630' WEST AND 1340 SOUTH OF INTERSECTION 29TH ST. N AND GREENWICH RD. 22' NORTH AND 5' EAST OF CHAIN LINK FENCE CORNER.  
NORTHING = 1703750.94 EASTING = 1683522.34  
ELEV. = 1382.19' NAVD 88
- #105 5/8" REBAR WITH MKEC ALUMINUM CAP 900' WEST AND 1000' SOUTH OF INTERSECTION 29TH ST. N. AND GREENWICH RD. AT SOUTHEAST CORNER OF SPORT COMPLEX. 27' NORTH AND 9' WEST OF CHAIN LINK FENCE CORNER. 18' SOUTHEAST OF AREA STORM INLET.  
NORTHING = 1704039.05 EASTING = 1685269.59  
ELEV. = 1382.83' NAVD 88
- #106 PK NAIL IN CONCRETE SEAM. 1.5' NORTH OF MAIN EASTWEST SIDEWALK ON NORTH SIDE OF MAIN ENTRANCE TO SOCCER FIELDS COMPLEX BUILDING.  
NORTHING = 1704811.93 EASTING = 1684618.58  
ELEV. = 1390.17' NAVD 88

## BENCHMARK

- #107 PLUS CUT IN TOP OF CURB AT SOUTHEAST SIDE OF NORTH HEAD OF ISLAND THAT SEPARATES TWO PARKING LOTS 312' WEST OF SECOND GATE ENTRANCE FROM 29TH AND GREENWICH, 53' SOUTH OF CHAIN LINK FENCE.  
NORTHING = 1705046.73' EASTING = 1684455.48'  
ELEV. = 1390.00' NAVD 88

HORIZONTAL AND VERTICAL DATUM:  
HORIZONTAL DATUM: KANSAS COORDINATE SYSTEM 1983 SOUTH ZONE.  
(HORIZONTAL COORDINATES MODIFIED TO GROUND USING A SCALE FACTOR OF 1.000120014)  
VERTICAL DATUM: NAVD 88

GRADING & UTILITIES PLANS FOR  
**STRYKER SPORTS**  
WICHITA, KANSAS



©2018  
MKEC Engineering  
All Rights Reserved  
[www.mkec.com](http://www.mkec.com)  
These drawings and their contents, including, but not limited to, all concepts, designs, & ideas are the exclusive property of MKEC Engineering (MKEC), and may not be used or reproduced in any way without the express consent of MKEC.

## SANITARY SEWER LAYOUT MAP

PROJECT NO.	170567	
DATE	01-10-18	
SCALE	1" = 150'	
DESIGNED	DRAWN	CHECKED
MAB	CRM	MAB
ISSUED FOR CONST.	01-10-18	
NO.	REVISION	DATE

J:\PROJECTS\2017\1701010567\_COW\_STRYKER\_170567\_CAD\SHS\505\_DVALS\ANN\170567-05-2000.DWG  
PLOTED: Wednesday, January 10, 2018 @ 08:45AM



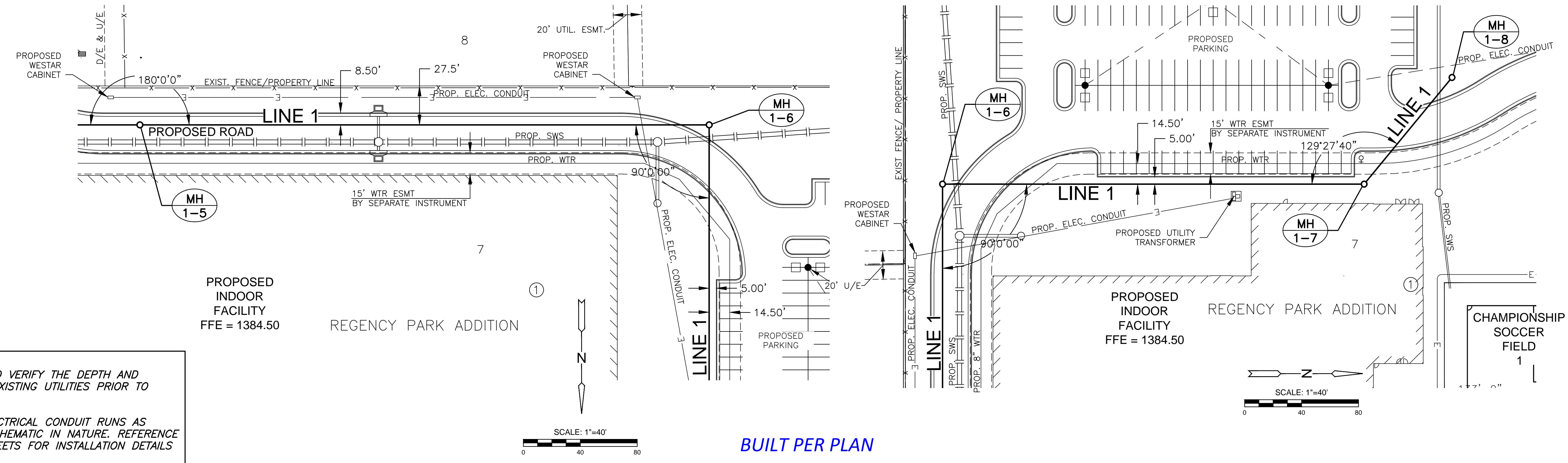


©2018 MKEC Engineering  
All Rights Reserved  
www.mkec.com  
These drawings and their contents, including, but not limited to, all concepts, designs, & ideas are the exclusive property of MKEC Engineering (MKEC), and may not be used or reproduced in any way without the express consent of MKEC.

**SANITARY LINE 1 CONT.**

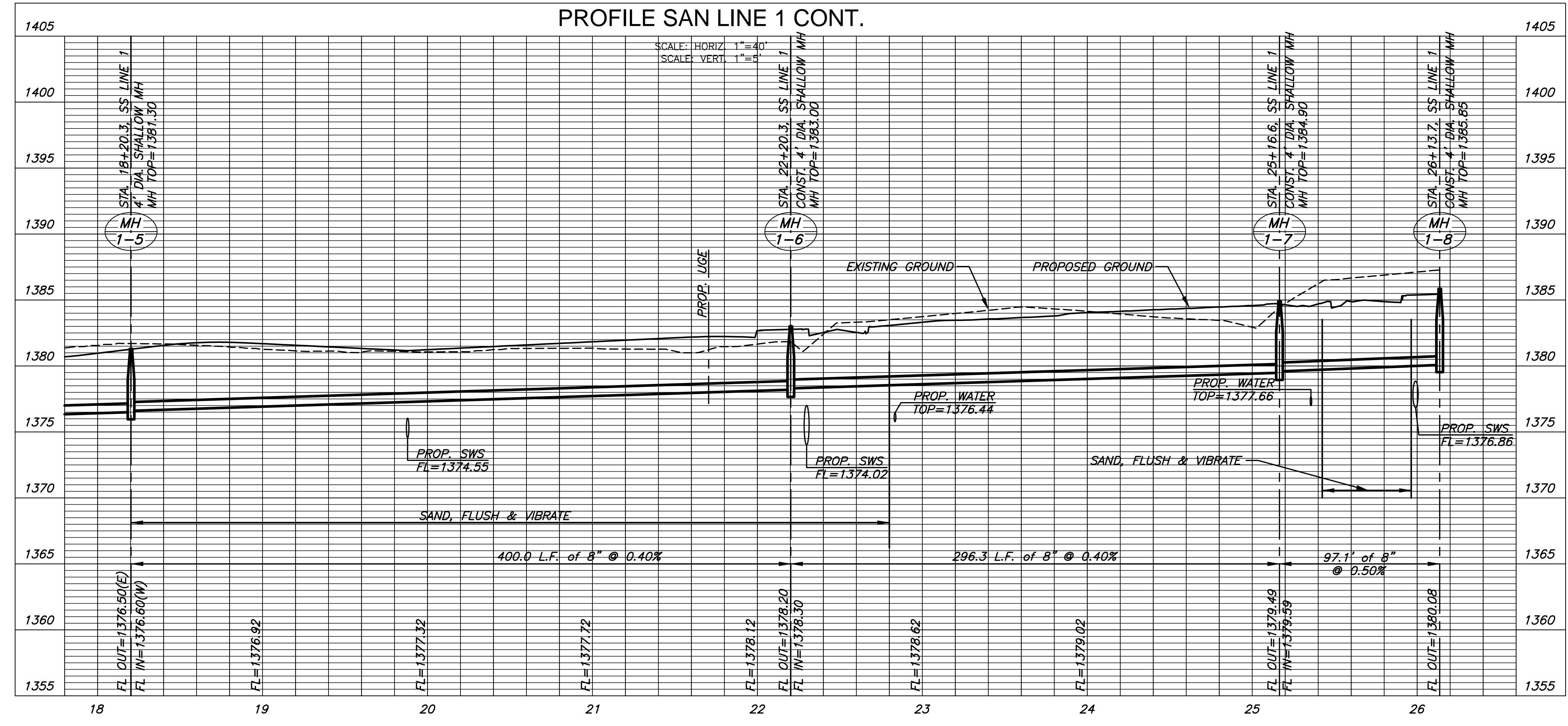
PROJECT NO.	170567	
DATE	01-10-18	
SCALE	1"=40'	
DESIGNED	DRAWN	CHECKED
MAB	CRM	MAB

ISSUED FOR CONST.	01-10-18	
NO.	REVISION	DATE



**NOTES:**  
CONTRACTOR TO VERIFY THE DEPTH AND LOCATION OF EXISTING UTILITIES PRIOR TO CONSTRUCTION.  
PROPOSED ELECTRICAL CONDUIT RUNS AS SHOWN ARE SCHEMATIC IN NATURE. REFERENCE ELECTRICAL SHEETS FOR INSTALLATION DETAILS  
SEE GRADING PLANS FOR BUILDING FINISHED FLOOR NOTES

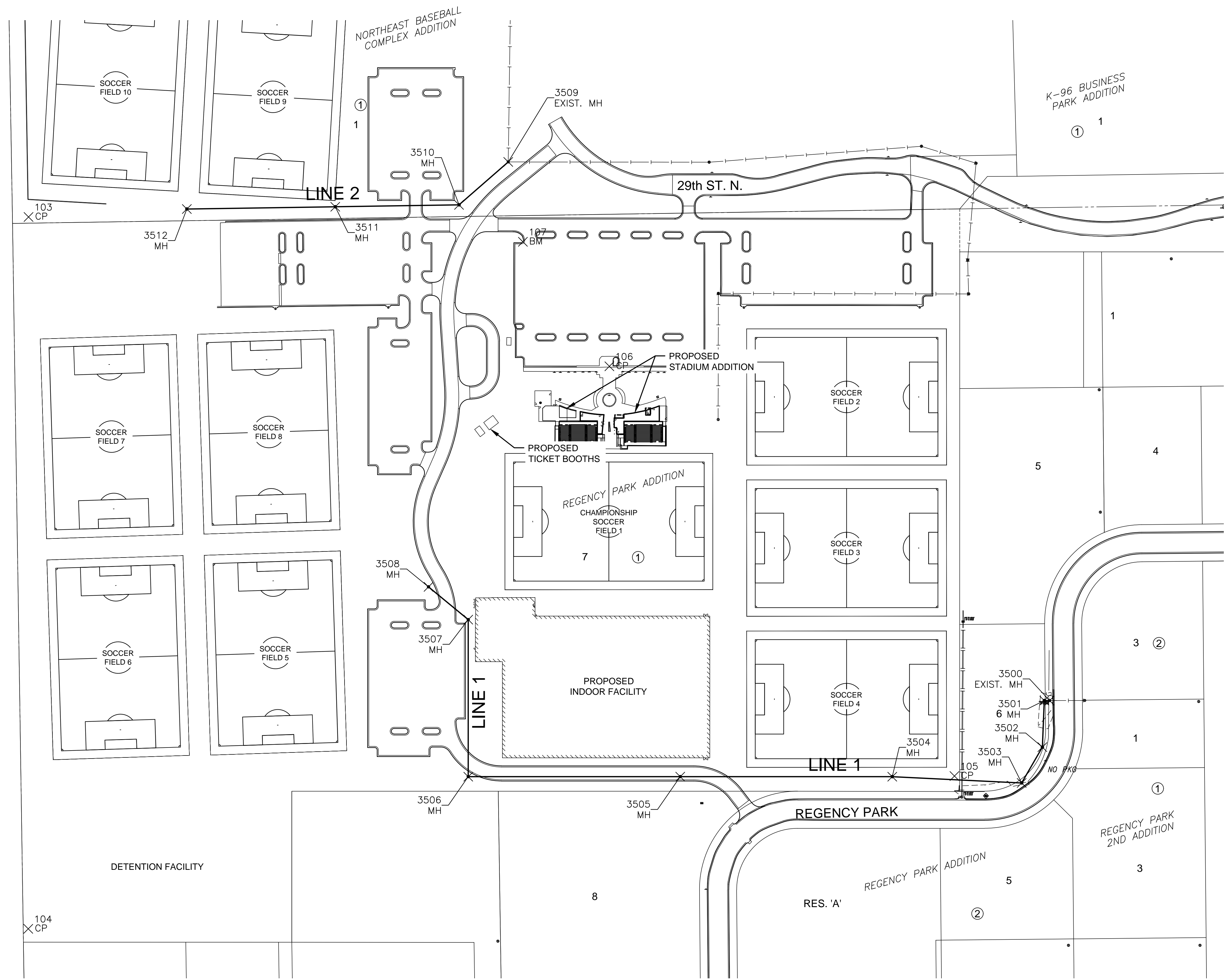
**PLAN SAN LINE 1 CONT.**  
**PROFILE SAN LINE 1 CONT.**



J:\PROJECTS\2017\1701010567\_COW\_STRYKER\_170567\_CAD\SH1505\_DVALSAN170567-05-2201.DWG  
 PLOTTED: Wednesday, January 10, 2018 @ 08:46AM



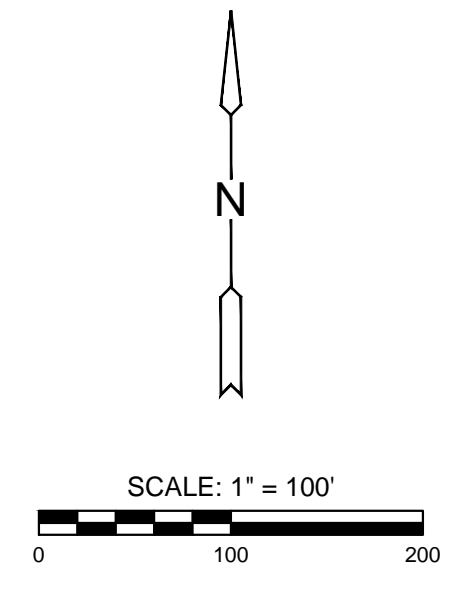
J:\PROJECTS\2017\1701010587\_COW\_STRYKER\_170567\_CADD\SH1505\_DVLS\DWG\170567-05-2500.DWG  
 PLOTTED: Wednesday, January 10, 2018 @ 08:50AM



SANITARY POINTS			
Point #	Northing	Easting	Desc.
3500	1704181.43	1685449.13	EXIST. MH
3501	1704181.39	1685439.12	MH
3502	1704093.62	1685435.54	MH
3503	1704026.06	1685396.52	MH
3504	1704037.87	1685152.38	MH
3505	1704037.88	1684752.38	MH
3506	1704037.87	1684352.38	MH
3507	1704334.15	1684352.38	MH
3508	1704395.89	1684277.39	MH
3509	1705197.43	1684427.83	EXIST. MH
3510	1705116.46	1684334.97	MH
3511	1705112.87	1684101.43	MH
3512	1705108.56	1683821.47	MH

CONTROL POINTS			
Point #	Northing	Easting	Desc.
100	1705129.39	1686099.44	CP
101	1706443.67	1686059.90	CP
102	1706375.64	1683490.77	CP
103	1705093.62	1683522.84	CP
104	1703750.96	1683522.34	CP
105	1704039.08	1685269.60	CP
106	1704811.93	1684618.58	CP
107	1705046.74	1684455.47	BM

**DATUM:**  
 1 - The Project Horizontal Datum is based on the NAD83, Kansas State Plane Coordinate System, South Zone, (US Survey Feet Definition), with a Combined Adjustment Factor (CAF) of 1.0001200144.  
 All coordinates and dimensions shown on these plans are modified to Ground values.  
 The following equations can be used for conversion:  
 Ground Coordinates to State Plane Coordinates = Ground x 1/CAF  
 State Plane Coordinates to Ground Coordinates = State Plane x CAF  
 2 - The Vertical Datum used is NAVD88.



EVERY ATTEMPT HAS BEEN MADE TO INSURE ALL COORDINATE VALUES SHOWN ARE AN ACCURATE AND TRUE REPRESENTATION OF THE CURRENT PLANS. ALL VALUES ARE TO BE CONFIRMED WITH THE FINAL SIGNED PLAN SET BEFORE USE.



GRADING AND UTILITY PLANS FOR  
**STRYKER SPORTS**  
 WICHITA, KANSAS



©2018 MKEC Engineering All Rights Reserved www.mkec.com  
 These drawings and their contents, including, but not limited to, all concepts, designs, & ideas are the exclusive property of MKEC Engineering (MKEC), and may not be used or reproduced in any way without the express consent of MKEC.

**SANITARY BUBBLE MAP**

PROJECT NO.	170567
DATE	01-10-18
SCALE	1" = 100'
DESIGNED	MAB
DRAWN	CRM
CHECKED	MAB
NO.	0
ISSUED FOR CONST.	01-10-18
NO.	
REVISION	
DATE	